

Access Professional Edition



BOSCH

en Quick Installation Guide

Table of contents

1	Introduction	4
2	Requirements	5
3	Installation	6
4	License Activation	7

1 Introduction

The sections below give a quick overview of the steps necessary to install the latest release of the access control application **Access Professional Edition**. For additional and more detailed information, read the documentation on the CD.

Notice!



If you wish to migrate from Access PE x.x to the latest release of the Access Professional Edition, you should first remove the existing software via Start > Settings > Control Panel > Add or Remove Programs before installing the new software.

If necessary, make use of the data backup feature described in the installation guide

2 Requirements

For a new installation of the Access PE download the ISO-image file from the Bosch website. Extract the ISO-image or create a DVD to proceed for installation.

The software packages listed below must be installed prior to the installation of the Access PE. If any of these packages are missing, please install the software from the Access PE installation media.

1. **dotnetfx45.exe** 3rdParty\NET Framework \dotNetFx45_Full_x86_x64.exe.
2. Bosch **Video SDK** (3rdParty\BOSCH VideoSDK \MPEG_ActiveX_X.XX.XXXX.x86.exe) Additional supported versions of the Video SDK are listed in the file readme.html on the installation CD.
3. 3rdParty\Crystal Reports XI\CRXI_R2_SP4Runtime.msi.
4. **.NET-3.5-Installation**

The Video SDK requires the .NET 3.5 framework. This is included in Windows 7 and 10. In Windows 10 this is not enabled by default.

To enable this feature:

- Open **Control Panel**.
- Select **Programs and Features** and from there Turn **Windows features on or off**.
- Select **.NET Framework 3.5**. The Sub-Features are not required.

This step requires administrative privileges and a running internet connection. If this does not work for you (i.e. you are not connected to the internet) use the following workaround:

- Mount a windows 10 installation kit (e.g. to F:)
 - Use **dism /online /enable-feature /featurename:NetFx3 /all /source:F:\sources\sxs /limitaccess**.
1. vcredist_x86.exe 3rdParty\VS2010 Redistributable

3 Installation

Installation

Log in as Administrator or use an account which has Administrator privileges. Start the installation by double-clicking the setup-file **Access Professional Edition X.x.exe** in the main directory.

1. Choose the desired language (English or German) for your installation from the list. Click **Next** to continue.
2. Start window **Welcome**. Click **Next** to continue.
3. License agreement: Choose the option **I accept the terms of the license agreement**. Click **Next** to continue.
4. Setup type: Select **Server** and **Client** type. Click **Next** to continue.
5. If you have selected **Client Installation**: Server for Client: Specify the IP-address or name of the server. Click **Next** to continue.
6. Select the Installation path. Default **C:\BOSCH\Access Professional Edition**. Click **Next** to continue.
7. Select options. Choose the access control tools to be installed. Click **Next** to continue.
8. Supported languages (German, English, Dutch, French, Chinese, Polish, Spanish, Portuguese, Russian). Click **Next** to continue.
9. If you have selected Server installation: Select one of the listed languages as Default configuration language. Click **Next** to continue.
10. Start the Installation and confirm the choices. Click **Next** to continue.
11. Setup Status. Status is displayed by a progress bar.
12. Installation completed. Click **Finish**.

4 License Activation

Access PE base licenses - i.e. **ASL-APE2P-BASE**, **ASL-APE2PBEXT**, **ASL-APE2P-VIDB** and **ASL-APE2POLSB** - can be activated only once per installation.

Access PE extension licenses can be purchased and installed multiple times per installation. Please note that the absolute license limits defined by the Access PE application can not be exceeded.

Base License Packages

Access PE - **Basic License**: ASL-APE2P-BASE

- 1 Client
- 16 Readers
- 2,000 Cards

Access PE - **Extended License**: ASL-APE2P-BEXT

- 2 Clients
- 64 Readers
- 10,000 Cards

Extension License Packages

Access PE - **Reader Expansion License**: ASL-APE2P-RDR

- 16 additional readers up to the maximum of 128 readers,

Access PE - **Reader Limit up to 512 readers**: F.01U.298.469

ASL-APE2P-RDRL

- Extends APE to a maximum number of 512 readers.

Access PE - **Client Expansion License**: ASL-APE2P-CLI

- 1 additional client up to the maximum of 16 clients

Access PE - **Video Activation License**: ASL-APE2P-VIDB

- Activation of the video components
- 16 Channels

Access PE - **Video Expansion License**: ASL-APE2P-VIDE

- 16 additional channels up to the maximum of 128 channels

Access PE - **OLS Activation License**: ASL-APE2P-OLSB

- Activation of the Offline Locking System
- 16 Doors

Access PE - **OLS Expansion License**: ASL-APE2P-OLSE

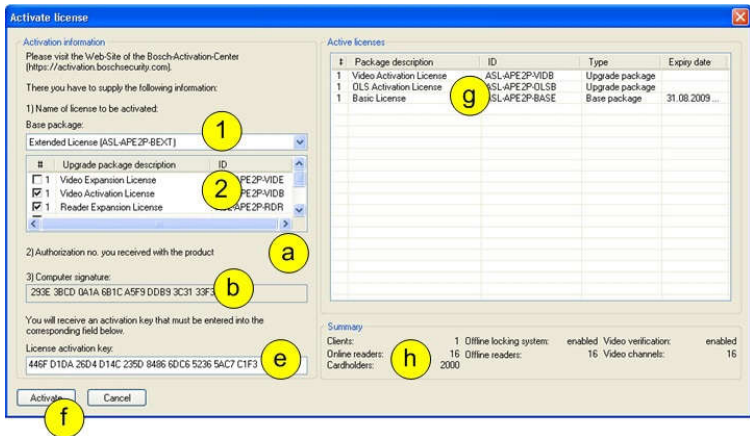
- 1 additional door up to the maximum of 1,000 doors
- Access PE - **SDK for cardholder data:** ASL-APE3P-API
- Software Development Kit (SDK) to connect APE, for example, to a Time & Attendance system: to import cardholder master records, and to export access control events. The SDK, with its command set, has its own documentation.

Access PE - **XProtect interface activation:** ASL-APE3P-XPRO

- Video management and security management handled through the Milestone XProtect system, with Entrance monitoring, Video verification, Mapviewer, and Alarm management.

How to activate the Licenses

Start the application **Access PE Configurator** to activate your software licenses. Select the menu item **Configuration >License activation ...**



The activation of the licenses is performed in two steps:

1. Activation of the **Base package:**

Select your base package from the list (ASL-APE2P-BASE or ASL-APE2P-BEXT).

- Make sure that you have the authorization number available that you received with the product.

- b. Enter the computer signature or copy and paste it into a text file.
 - c. On a computer with Internet access, enter the following URL into your browser: **https:// activation.boschsecurity.com**. If you do not have an account to access the Bosch License Activation Center, create a new account to activate a new license.
 - d. Follow the instructions to obtain the License Activation Key.
 - e. Return to the Access PE software. In the License Activation dialog box, type the License Activation Key obtained from the License Manager and
 - f. click **Activate**.
 - g. Activated packages will be displayed in the list **Active licenses** on the right.
 - h. Those access control components that are licensed are shown in a summary below the list box.
 1. Activation of the **Extension packages**:
Select the extension packages you want to activate from the list with a click on the check box. A selection of multiple packages is possible.
If you have purchased multiple packages of the same type, please specify the number of packages: by single-clicking the number to the right of the check box and editing the number accordingly.
For the rest of the activation process, perform the same steps as with the activation of a base license:
 - a. ...
 - b. ...
- etc. as described above.

Bosch Access Systems GmbH

Charlottenburger Allee 50

52068 Aachen

Germany

www.boschsecurity.com

© Bosch Access Systems GmbH, 2016