

Release Notes: Access Professional Edition

Content

Release Notes: Access Professional Edition	1
Access Professional Edition V3.8, build 3.8.1.12	5
New Features	5
Improvements, fixed issues and customer complaints	5
New AMC Firmware:.....	6
Known limitations and restrictions	6
Access Professional Edition V3.7 (Patch), build 3.7.2.3	8
Integration of VSDK 6.32.0099	8
CryptEditTool - Supervisor user	8
Access Professional Edition V3.7, build 3.7.1.8	8
New Features	8
Improvements, fixed issues and customer complaints	9
New AMC Firmware:.....	10
Known limitations and restrictions	10
Access Professional Edition V3.7, build 3.7.1.8	12
New Features	12
Improvements, fixed issues and customer complaints	12
New AMC Firmware:.....	13
Known limitations and restrictions	13
Access Professional Edition V3.6, build 3.6.1.4	15
New Features	15
Improvements, fixed issues and customer complaints	15
New AMC Firmware:.....	16

Known limitations and restrictions	16
Access Professional Edition V3.5, build 3.5.1.3	18
New Features	18
Improvements, fixed issues and customer complaints	18
New AMC Firmware:.....	19
Known limitations and restrictions	19
Access Professional Edition V3.4, build 3.4.1.1	21
New Features	21
Improvements, fixed issues and customer complaints	21
New AMC Firmware:.....	22
Installation Notes for Windows 10	22
Known limitations and restrictions	22
Access Professional Edition V3.3, build 3.3.1.2	25
Hotfix.....	25
Improvements, fixed issues and customer complaints	25
Access Professional Edition V3.3, build 3.3.1.1	25
New Features	25
Improvements, fixed issues and customer complaints	25
Access Professional Edition and <i>SDK for cardholder data</i> compatibility list	26
See also notes in chapter <i>Known limitations and restrictions</i>	26
New AMC Firmware: x20	26
Installation Notes for Windows 10	26
Known limitations and restrictions	26
Access Professional Edition V3.2, build 3.2.1.10	29
New Features	29
Fixed issues and customer complaints.....	29
Access Professional Edition and API for cardholder data compatibility list	29

See also notes in chapter <i>Known limitations and restrictions</i>	29
Installation Notes for Windows 10	30
Known limitations and restrictions	31
Access Professional Edition V3.1, build 3.1.7.7	33
New features	33
Fixed issues and customer complaints.....	33
Known limitations and restrictions	33
Access Professional Edition V3.0, build 3.0.5	35
New features	35
Fixed issues and customer complaints.....	35
Access Professional Edition V3.0, build 3.0.4	35
New features	35
Fixed issues and customer complaints.....	35
Access Professional Edition V3.0, build 3.0.3	35
New features	35
Fixed issues and customer complaints.....	35
Access Professional Edition V3.0, build 3.0.2	36
New features	36
Fixed issues and customer complaints.....	36
Known limitations and restrictions	36
Access Professional Edition V3.0, build 3.0.1	36
New features	36
Fixed issues and customer complaints.....	36
Known limitations and restrictions	36
Access Professional Edition V3.0, build 3.0.0	38
New features	38
Fixed issues and customer complaints.....	38

Known limitations and restrictions	38
Access Professional Edition V2.1 TU1, build 2.7.60.....	39
New features	39
Fixed issues and customer complaints.....	39
Known limitations and restrictions	39
Access Professional Edition V2.1, build 2.7.52	40
New features	40
Fixed issues and customer complaints.....	40
Known limitations and restrictions	40

Access Professional Edition V3.8, build 3.8.1.12

Date: 25.07.2019

New Features

- Threat alert
With the threat alert feature immediate and simultaneous control of therefor configured entrances within the system is possible. Threat alert can be activated by external signal, dialog or a special user card.
- Online Swipe
Monitoring of entrances is now possible for multiple entrances. Person, entrance and reader messages and events will be shown. It can be configured if only some (eg. Only person events/messages) or all information is shown.
- Activation of client installation
To enable the installation of clients the computer name must be activated within the configurator under “Settings / Client activation”.
- Enrollment
With Lectus Enroll 5000 BoschCode or CSN can be enrolled.
New firmware and the tool to update older reader are available on the installation medium under 3rdParty.
- Person authorizations
Special rights like “office mode” or “remote control” are listed in the “Persons-authorizations” report.
- VSDK
VSDK 6.32.0.99 is integrated. Cameras are now connected via “https” per default. If not desired configuration must be changed.
- AMC 2W
The AMC 2W one door controller can be selected and configured.
- Security improvements
 - Some preinstalled developer tools (like CryptEdit) were removed from the installation to protect the configuration data. Direct changes to the configuration files can only be done by central support.
 - No direct access from client to the server folders.
- Support of DIVAR network 2000
DIVAR network 2000 is now supported and can be used for live video and playback.

Improvements, fixed issues and customer complaints

ID#	Description
208999	CFS – Anti-passback timeout is handled correctly
215578	CFS – Access via push button – Message 1063 will provide location
215685	CFS – Report filter supports all Thai characters
215826 222047	Area counter behaviour fixed for use of office mode, size limitation and multiple presentation of cards.
229067	CFS – Loss of SQL log database prevented
229890	Outside persons will not be set to unknown, if location change executed
230522	Video verification handling improved, if second card is presented during execution
236402	CFS - Assigning visitor cards after withdraw is possible

Supported operating systems

The APE system runs on these operating systems:

	APE Server (LAC Sp & Database)	APE Configurator	APE Personal Management	APE Alarm Management	APE Logviewer	APE Video Verification
Windows 10 Professional or Enterprise (32 or 64 bit)	Yes	Yes	Yes	Yes	Yes	Yes
Windows Server 2016 Standard (64 bit)	Yes	Yes	Yes Video not recommended	Yes Video not recommended	Yes Video not recommended	No

AccessPE 3.8 uses features of SMB protocol 3.1.1 per default. Thus operating systems which do not support this protocol may not be able to connect to the server.

To improve the security of SMB against known security weaknesses please contact your security advisor or consult Windows sources which can be found here:

<https://docs.microsoft.com/en-us/windows/security/threat-protection/overview-of-threat-mitigations-in-windows-10>

<https://docs.microsoft.com/de-de/windows-server/storage/file-server/smb-security>

New AMC Firmware:

The AccessPE 3.8 installation setup includes also the new AMC firmware.
The latest AMC firmware version listed below should be used with AccessPE 3.8.

AMC type /Reader technology	Firmware filename
AMC2-4W/Wiegand	LCMV3758.RUN
AMC2-4R4/L-BUS	LCMV6043.RUN
AMC2-4R4/BG900	LCMV6143.RUN
AMC2-4R4/OSDP	LCMV6243.RUN

Known limitations and restrictions

Upgrade to Access PE 3.8

- If the setup file for an upgrade to Access Professional Edition 3.8 is started, the install routine uninstalls the existing Access Professional Edition version. The configuration can be saved during this procedure. For the final installation, the setup file has to be started again.
- APE-SDK 3.8 update should be handled in the same way (deinstall and reinstall using the setup)

- **After update all controllers are disabled.** They have to be enabled using ACConfig. On the main page the respective checkbox of each controller has to be checked.

LACis and AMC1 are no longer supported

- Minimum memory for AMC2 is 256 MB. Recommended are 2GB.

Card personalization in non-domain environment

- Installing APE 3.8 the folders for card layouts and formulars must be shared manually:
 - ..\Data\CP_Layouts must be shared as *ape_cp_layouts*
 - ..\Data\CP_Formulars must be shared as *ape_cp_formulars*Each Windows user working with an APE client installation and using Card Personalization must have access rights.

Office Mode

- Office mode and time model works only correctly with one interval defined. If multiple time intervals are defined, office mode will overrule the time model. After the first interval office mode will stay active if activated.
- Using office mode only with entrances without time model assigned is recommended.
- Every person with authorization for the concerned entrance can reset office mode. Even doors manually set to long term open can be set back to normal mode by office mode functionality.

Microsoft Edge

- Starting the APE installation out of the html-page stops working sometimes. Please use another explorer or start the installation directly from the medium.

Elevators

- Some features like office mode or threat alert does not work properly together with door models for elevators. Configuration of these features is now restricted.

Video verification

- Using DIVAR network 2000 for video verification the performance of the network must be sufficient to avoid time-out issues.

Access Professional Edition V3.7 (Patch), build 3.7.2.3

Date: 22.03.2019

Security vulnerabilities have been recently discovered and affect the Access Professional Edition software in terms of video integration and client-server communication. This patch is according to CVE-2019-6957, CVE-2019-6958.

Integration of VSDK 6.32.0099

Access PE 3.7.2.3 will support VSDK 6.32.0099. By updating to Access PE 3.7.2.3, the cameras will be automatically configured to use “https”-protocol.

If the operator wants to switch off the secure communication, the configuration must be changed manually:

- Open configurator and select “video devices”
- Select a camera and open “Change video device” dialog via edit button or double-click
- Switch “protocol” from “https” to “none”

CryptEditTool - Supervisor user

With Access PE 3.7.2.3, the crypt edit tool has been removed from the setup, together with the now unsupported service user functionality.

The encryption of the configuration files has been changed. The files can no longer be opened with CryptEditTools of older versions.

Update

Uninstall the previous version of the Access Professional Edition software by following the instructions from the setup menu. Choose to save the data for the new installation (3.7.2.3) Start the setup for the new patch installation. Follow the instructions from the setup menu and choose to restore the saved data.

If APE SDK is used after the installation of APE 3.7.2.3, the corresponding SDK should be installed as well. If the APE SDK is not installed, the SDK is not able to read the encrypted configuration files

Access Professional Edition V3.7, build 3.7.1.8

Date: 20.06.2018

New Features

- Clean up utility for persons
ACPers offers a dialog to delete multiple persons with one action. The dialog can be found within the persons menu. Search criteria can be entered, selected persons of the result list can be deleted using the “delete” button.
- Office Mode
The right to open a door long-term can be assigned to cardholders. If the cardholder is authorized, he can change the door state by pressing the key “3” and presenting his card. Only for doors with keypad reader. Not to be used with time models: Office mode will overrule the time model.

The door can be closed by any authorized persons, no special “office rights” needed.
A person will have the right to handle all doors configured with office mode.

- Control function via card
The right to activate a configured output signal can be assigned to cardholders. By presenting the card to a reader connected to an AMC with these signals configured, the signal will be set as configured.
Cardholder must have a valid card and authorization.
Only one output signal should be assigned to a control function. Make sure that the signal is not used otherwise (e.g. other I/O function). The two configurable remote control functions should not use the same signal.
- Assembly point
Door model only with reader. Should be used to configure an assembly point e.g. outside the building. Muster lists can be created, if areas are correctly defined.
- Handling of AMC firmware
 - Bootloader will be downloaded, if setup version is newer (v00.49)
 - **AMC will be disabled after update, manually enable via configurator (checkbox)**
 - Status view of AMC updated automatically
- Acknowledgement template with all personnel information can be used for GDPR compliance
All personnel fields have been added to the acknowledgement template. If the customer has changed the template, the new version can be found in the subfolder “UPDATE” and must be changed manually.
- Host secure can be configured also for 4R4 LBUS

Improvements, fixed issues and customer complaints

ID#	Description
184506	CFS - Person locked due to often wrong PIN code, is locked on all AMCs of the system
198794	CFS - Badge designer can now handle templates whatever encoding is used
184964	AMC Wiegand + OSDP can be connected via com
202491	New message if bloc
203828	CFS - MileStone Plugin and Service are handling I/O events

Supported operating systems

The APE system runs on these operating systems:

	APE Server (LAC Sp & Database)	APE Configurator	APE Personal Management	APE Alarm Management	APE Logviewer	APE Video Verification
Windows 7 SP1 (32 or 64 bit) Professional or Enterprise	Yes	Yes	Yes	Yes	Yes	Yes
Windows 10 Professional or	Yes	Yes	Yes	Yes	Yes	Yes

Enterprise (32 or 64 bit)						
Windows Server 2012 R2 SP1 (64bit) Standard or Datacenter (no domain controller)	Yes	Yes	Yes Video not recommended	Yes Video not recommended	Yes Video not recommended	No
Windows Server 2016 Standard (64 bit)	Yes	Yes	Yes Video not recommended	Yes Video not recommended	Yes Video not recommended	No

New AMC Firmware:

The AccessPE 3.7 installation setup includes also the new AMC firmware.
The latest AMC firmware version listed below should be used with AccessPE 3.7.

AMC type /Reader technology	Firmware filename
AMC2-4W/Wiegand	LCMV3756.RUN
AMC2-4R4/L-BUS	LCMV6041.RUN
AMC2-4R4/BG900	LCMV6141.RUN
AMC2-4R4/OSDP	LCMV6241.RUN

Known limitations and restrictions

Upgrade to Access PE 3.7

- If the setup file for an upgrade to Access Professional Edition 3.7 is started, the install routine uninstalls the existing Access Professional Edition version. The configuration can be saved during this procedure. For the final installation, the setup file has to be started again.
- APE-SDK 3.7 update should be handled in the same way (deinstall and reinstall using the setup)
- **After update all controllers are disabled.** They have to be enabled using ACConfig. On the main page the respective checkbox of each controller has to be checked.

Doormodel 01r

- If you switch from another door model to 01r the door status of this former model may stay active. Restart the Lac service to clear the buffer including sent all data.

Reports

- The new card authorizations for Office Mode and Remote Control are not yet listed in the reports.
- Time models of authorizations are only listed in the report persons-authorizations. Time models assigned to persons are not listed in reports.

Office Mode

- If a door is set to long-term open via Office Mode, this will overrule any assigned time model. Doors with time-model to long-term open assigned may not return to locked state

DbiTool

- Working with import using CSV must be done carefully, additional ';' in imported fields can lead to a corrupt database

New logbook message

- New message 1064 only in German and English translation.
Correct English translation "Authorized but no entry, door is blocked".

VSDK 6.15

- Known issues with Divar Hybrid 3000 and 5000 series

Access Professional Edition V3.7, build 3.7.1.8

Date: 20.06.2018

New Features

- Clean up utility for persons
ACPers offers a dialog to delete multiple persons with one action. The dialog can be found within the persons menu. Search criteria can be entered, selected persons of the result list can be deleted using the “delete” button.
- Office Mode
The right to open a door long-term can be assigned to cardholders. If the cardholder is authorized, he can change the door state by pressing the key “3” and presenting his card. Only for doors with keypad reader. Not to be used with time models: Office mode will overrule the time model.
The door can be closed by any authorized persons, no special “office rights” needed. A person will have the right to handle all doors configured with office mode.
- Control function via card
The right to activate a configured output signal can be assigned to cardholders. By presenting the card to a reader connected to an AMC with these signals configured, the signal will be set as configured.
Cardholder must have a valid card and authorization.
Only one output signal should be assigned to a control function. Make sure that the signal is not used otherwise (e.g. other I/O function). The two configurable remote control functions should not use the same signal.
- Assembly point
Door model only with reader. Should be used to configure an assembly point e.g. outside the building. Muster lists can be created, if areas are correctly defined.
- Handling of AMC firmware
 - Bootloader will be downloaded, if setup version is newer (v00.49)
 - **AMC will be disabled after update, manually enable via configurator (checkbox)**
 - Status view of AMC updated automatically
- Acknowledgement template with all personnel information can be used for GDPR compliance
All personnel fields have been added to the acknowledgement template. If the customer has changed the template, the new version can be found in the subfolder “UPDATE” and must be changed manually.
- Host secure can be configured also for 4R4 LBUS

Improvements, fixed issues and customer complaints

ID#	Description
184506	CFS - Person locked due to often wrong PIN code, is locked on all AMCs of the system
198794	CFS - Badge designer can now handle templates whatever encoding is used

184964	AMC Wiegand + OSDP can be connected via com
202491	New message if bloc
203828	CFS - MileStone Plugin and Service are handling I/O events

Supported operating systems

The APE system runs on these operating systems:

	APE Server (LAC Sp & Database)	APE Configurator	APE Personal Management	APE Alarm Management	APE Logviewer	APE Video Verification
Windows 7 SP1 (32 or 64 bit) Professional or Enterprise	Yes	Yes	Yes	Yes	Yes	Yes
Windows 10 Professional or Enterprise (32 or 64 bit)	Yes	Yes	Yes	Yes	Yes	Yes
Windows Server 2012 R2 SP1 (64bit) Standard or Datacenter (no domain controller)	Yes	Yes	Yes Video not recommended	Yes Video not recommended	Yes Video not recommended	No
Windows Server 2016 Standard (64 bit)	Yes	Yes	Yes Video not recommended	Yes Video not recommended	Yes Video not recommended	No

New AMC Firmware:

The AccessPE 3.7 installation setup includes also the new AMC firmware.
The latest AMC firmware version listed below should be used with AccessPE 3.7.

AMC type /Reader technology	Firmware filename
AMC2-4W/Wiegand	LCMV3756.RUN
AMC2-4R4/L-BUS	LCMV6041.RUN
AMC2-4R4/BG900	LCMV6141.RUN
AMC2-4R4/OSDP	LCMV6241.RUN

Known limitations and restrictions

Upgrade to Access PE 3.7

- If the setup file for an upgrade to Access Professional Edition 3.7 is started, the install routine uninstalls the existing Access Professional Edition version. The configuration can be saved during this procedure. For the final installation, the setup file has to be started again.
- APE-SDK 3.7 update should be handled in the same way (deinstall and reinstall using the setup)

- **After update all controllers are disabled.** They have to be enabled using ACConfig. On the main page the respective checkbox of each controller has to be checked.

Doormodel 01r

- If you switch from another door model to 01r the door status of this former model may stay active. Restart the Lac service to clear the buffer including sent all data.

Reports

- The new card authorizations for Office Mode and Remote Control are not yet listed in the reports.
- Time models of authorizations are only listed in the report persons-authorizations. Time models assigned to persons are not listed in reports.

Office Mode

- If a door is set to long-term open via Office Mode, this will overrule any assigned time model. Doors with time-model to long-term open assigned may not return to locked state

DbiTool

- Working with import using CSV must be done carefully, additional ';' in imported fields can lead to a corrupt database

New logbook message

- New message 1064 only in German and English translation. Correct English translation "Authorized but no entry, door is blocked".

VSDK 6.15

- Known issues with Divar Hybrid 3000 and 5000 series

Access Professional Edition V3.6, build 3.6.1.4

Date: 25.10.2017

New Features

- Default installation with special APEUser for client installations to improve security of shared data folder on the server
- Config Collector / Bug reporter (Log files of system and APE are collected, system information stored, attachments are possible)
- Configuration of reader offers the possibility to define reasons when cards should lead to locking the person (works in the same way as badge move in, can be combined)
- Visitor cards can be reassigned without removing them first, only confirmation needed, only if original card owner (visitor) is locked
- SDK
 - Possibility to edit memo and remark field
 - Event time filter with date and time (hh:mm:ss)
- High secure communication (also for Wiegand now, OSDP already with 3.5.1.3) communication between service and controller is encrypted with AES 128, session based key separately generated for each AMC
- Further extension boards are now available with extended license and 512 reader license
- New common AMC firmware for Access PE 3.6 (high secure for Wiegand, additional bugfixes)

Improvements, fixed issues and customer complaints

ID#	Description
175477	CFS ACConfig: Special days wrong spelling of Category fixed
173070	CFS: APE SDK : Remarks' and 'Memo' fields can be handled
174300	CFS: (PT) translation of "card move-in reasons" fixed
175351	CFS: long term open possibility removed for doormodel 7
172526	CFS: Logviewer : Quick info texts fixed
10207	Antipassback global works with Group ID
170695	SDK: Handling of special characters fixed
169421	Handling of pictures with video verification and Door PIN configured at the same time works
156900	Display of controller corresponds to power state at output

Supported operating systems

The APE system runs on these operating systems:

	APE Server (LAC Sp & Database)	APE Configurator	APE Personal Management	APE Alarm Management	APE Logviewer	APE Video Verification
Windows 7 SP1 (32 or 64 bit) Professional or Enterprise	Yes	Yes	Yes	Yes	Yes	Yes
Windows 10 Professional or Enterprise (32 or 64 bit)	Yes	Yes	Yes	Yes	Yes	Yes
Windows Server 2012 R2 SP1 (64bit) Standard or Datacenter (no domain controller)	Yes	Yes	Yes Video not recommended	Yes Video not recommended	Yes Video not recommended	No
Windows Server 2016 Standard (64 bit)	Yes	Yes	Yes Video not recommended	Yes Video not recommended	Yes Video not recommended	No

New AMC Firmware:

The AccessPE 3.6 installation setup includes also the new AMC firmware.

The latest AMC firmware version listed below should be used with AccessPE 3.6.

(Due to changes in the group access handling APE 3.6 cannot work with lower AMC versions)

AMC type /Reader technology	Firmware filename
AMC2-4W/Wiegand	LCMV3751.RUN
AMC2-4R4/L-BUS	LCMV6032.RUN
AMC2-4R4/BG900	LCMV6132.RUN
AMC2-4R4/OSDP	LCMV6232.RUN

Known limitations and restrictions

Upgrade to Access PE 3.6

- If the setup file for an upgrade to Access Professional Edition 3.6 is started, the install routine uninstalls the existing Access Professional Edition version. The configuration can be saved during this procedure. For the final installation, the setup file has to be started again.
- APE-SDK 3.6 update should be handled in the same way (deinstall and reinstall using the setup)
- Access rights of the DATA-folder are per default restricted to the APEUser. APEUser is generated automatically on server and client. On client installations only the APEUser has got access to the DATA-folder, Windows User not any longer.

During installation the possibility is given to avoid the usage of APEUser, user rights must then be given manually.

Printer configuration

- Card Personalization Service is now started and ended within ACPers application. If configuration of eg. Printer has been changed ACPers must be restarted.
- In some cases installed printer were not selectable for APEUser after client installation. Reports cannot be shown and print. After reboot printers should be available

Report devices

- The device report can only be filtered for readers and entries in EN, in other languages the filter does not work correctly

Display readers

- Some irregularities may occur: second line not refreshed correctly, message invalid shown instead of not authorized, offline not correctly shown

PIN locked cards

- If a person is blocked due to too many wrong attempts of entering a PIN code, then this block will only concern readers with PIN-code configured. Other readers can still be passed by this person.

Access Professional Edition V3.5, build 3.5.1.3

Date: 24.04.2017

New Features

- Global Antipassback (Double access can be checked over all configured controllers)
- SDK
 - doors states added
 - insert of pictures
 - authorizations with valid from-until
- High secure communication (for OSDP the communication between service and controller is encrypted with AES 128, session based key separately generated for each AMC)
- Communication between client and server is AES128 encrypted
- New common AMC firmware for Access PE 3.5 (esp. high secure for OSDP and hijacking protection for the other versions)
- Search of persons now with “and”-connection, search will get more detailed with each entry
- Distinction between door state (open, closed) and door modi (normal, locked, permanent open)
New icons have been integrated (door, door with lock closed, door with lock open)
- Possibility to reset reader and message texts to the default
- Setup has no default setting for Client or Server installation anymore , operator has to check the required installation type

Improvements, fixed issues and customer complaints

ID#	Description
157267	Possibility to switch to Thai font for reports in EN system
145903	Persons without PIN are directly denied, if the reader is configured with PIN
123780	Search function in ACPers has now button to clear the input
163564	Data is sent to all AMCs, also if one AMC is disconnected (not waiting for timeout)
134123	On deactivation of a license the license ID is shown in the logbook message
156757	ViewLog – icons of playback dialog adopted to facelift
157545	Documentation adopted with new screenshot, buttons to scan AMC removed
170380	Documentation of doormodel 7b fixed, no possibility to configure public floors
155005	AlarmManagement – If no home map is defined, the home button is disabled

Supported operating systems

The APE system runs on these operating systems:

	APE Server (LAC Sp & Database)	APE Configurator	APE Personal Management	APE Alarm Management	APE Logviewer	APE Video Verification
Windows 7 SP1 (32 or 64 bit) Professional or Enterprise	Yes	Yes	Yes	Yes	Yes	Yes
Windows 8.1 (32 or 64 bit) Professional or Enterprise	Yes	Yes	Yes	Yes	Yes	Yes
Windows 10 Professional or Enterprise (32 or 64 bit)	Yes	Yes	Yes	Yes	Yes	Yes
Windows Server 2012 R2 SP1 (64bit) Standard or Datacenter (no domain controller)	Yes	Yes	Yes Video not recommended	Yes Video not recommended	Yes Video not recommended	No

New AMC Firmware:

The AccessPE 3.5 installation setup includes also the new AMC firmware.
The latest AMC firmware version listed below should be used with AccessPE 3.5.

AMC type /Reader technology	Firmware filename
AMC2-4W/Wiegand	LCMV3750.RUN
AMC2-4R4/L-BUS	LCMV6030.RUN
AMC2-4R4/BG900	LCMV6130.RUN
AMC2-4R4/OSDP	LCMV6230.RUN

Known limitations and restrictions

Upgrade to Access PE 3.5

- If the setup file for an upgrade to Access Professional Edition 3.5 is started, the install routine uninstalls the existing Access Professional Edition version. The configuration can be saved during this procedure. For the final installation, the setup file has to be started again.
- Before updating APE-SDK 3.5 it is recommended to uninstall the existing SDK with Windows on board tool.
- For installations on operation systems, which are not based on English or German, the access rights of the DATA-folder have to be set manually.

Check if the hard disk **..:\BOSCH\Access Professional Edition\PEData** is released under the shared name **APEData\$**. If necessary, have this set manually by your system Administrator

Antipassback

- Configuration with readers assigned to different groups on different controller, local antipass back will overrule the global anti passback.
(E.g Controller A, Reader 1 of Group A
Controller B, Reader 2 of Group B
 - 1. present card to Reader 1 = access
 - 2. present card to Reader 2 = access
 - 3. present card to Reader 1 = double access block, if within time out
- E.g Controller A, Reader 1 of Group A, Reader 2 of Group B
 - 1. present card to Reader 1 = access
 - 2. present card to Reader 2 = access
 - 3. present card to Reader 1 = access, because Reader 2 cancels antipassback)

Report devices

- The device report can only be filtered for readers and entries in EN, in other languages the filter does not work correctly

SDK

- The SDK demo application has got issues with the automatically generated display name of persons caused by the conversion of German umlaute. Using the SDK please ensure that display text is not set in the APE_persons_class.

Access Professional Edition V3.4, build 3.4.1.1

Date: 20.10.2016

New Features

- Facelift – New Icons and Bmps following current Bosch style
- Support of Japanese
- New common AMC firmware for AccessPE 3.4 and BIS/ACE 4.3
- Updated documentation related to the use of single-board computer (Intel Compute Stick)
- Bug fixing of known issues

Improvements, fixed issues and customer complaints

ID#	Description
145085	The last admin user could not be deleted to prevent lock out of administration possibility.
151770	It is possible to store and reactivate filter settings made in the Logviewer.
152437	Video clips from Logviewer can be stored.
145860	Lectus 5000 MD is supported correctly.
	Device configuration – entrance definition, button to read out the device cache removed (not supported any longer by AMC)
151548 155434	ACConfig - Signal Conditions can be added and removed correctly by the offered buttons.
135900	Alarm management: Actual alarm could be confirmed after restart of LacSP (two alarms with identical id)
147374	BadgeDesigner Text field does not show unwanted characters any longer

Supported operating systems

The APE system runs on these operating systems:

	APE Server (LAC Sp & Database)	APE Configurator	APE Personal Management	APE Alarm Management	APE Logviewer	APE Video Verification
Windows 7 SP1 (32 or 64 bit) Professional or Enterprise	Yes	Yes	Yes	Yes	Yes	Yes
Windows 8.1 (32 or 64 bit) Professional or Enterprise	Yes	Yes	Yes	Yes	Yes	Yes
Windows 10 Professional or Enterprise (32 or 64 bit)	Yes	Yes	Yes	Yes	Yes	Yes
Windows Server 2012 R2 SP1 (64bit) Standard or Datacenter (no domain controller)	Yes	Not recommended (test pending)	Not recommended	Not recommended	Not recommended	No

New AMC Firmware:

The AccessPE 3.4 installation setup includes also the new AMC firmware.
The latest AMC firmware version listed below should be used with AccessPE 3.4.

AMC type /Reader technology	Firmware filename
AMC2-4W/Wiegand	LCMV3744.RUN
AMC2-4R4/L-BUS	LCMV6022.RUN
AMC2-4R4/BG900	LCMV6122.RUN
AMC2-4R4/OSDP	LCMV6222.RUN

Installation Notes for Windows 10

For details regarding installation of Windows 10 refer to the section of the release notes of Access Professional Edition V3.2, build 3.2.1.10 in this document.

During bigger updates it may happen that, due to password restrictions, .net 3.5 is disabled. Customer has to enable it manually again after update is finished.

If after the update to Access Professional Edition 3.4 the desktop icons have not changed, the icon cache of Windows must be cleared.

Known limitations and restrictions

Upgrade to Access PE 3.4

- If the setup file for an upgrade to Access Professional Edition 3.4 is started, the install routine uninstalls the existing Access Professional Edition version. The configuration can be saved during this procedure. For the final installation, the setup file has to be started again.
- In case of an update from Access Professional Edition 3.0 or an earlier release to the new release 3.4, all single authorizations IDS-ON / - OFF assigned to persons will be lost. Follow the instructions under "Update to Access PE 3.3"

Video devices supported

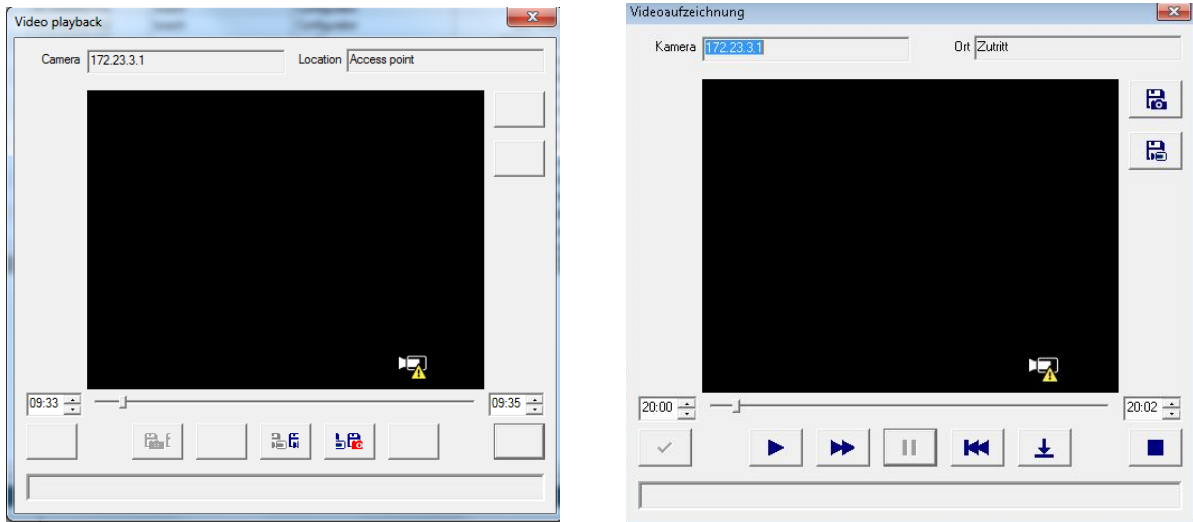
Access PE 3.4 uses the Video SDK Version 5.9.0.0081 (x86)

- Access PE 3.4 supports the video cameras as listed under:
<http://ipp.boschsecurity.com/integration-partner-program/tools/video-tools/firmware-overview/hardware-to-firmware/hardware-to-firmware>.
- Access PE supports searching for these devices in the network, live video, creating a snapshot and playback directly from the device (SD-card or CF-card recording).
- In addition, Access PE does support Divar IP 2000, however it does not support playback managed by VRM. For playback Divar IP 2000 needs to be re-configured to have the cameras directly record on Divar IP 2000 as an iSCSI target.

- For requirements beyond the support within APE, please refer to other Video Management System solutions, as e.g. Bosch Video Management System or Milestone XProtect.

Viewlog video playback

- The video playback dialog in Viewlog misses icons or does not contain the correct icons. The pictures below show the current state and the dialog with correct icons.



Group access

- Group Access can only be configured for the door models 1+3
- Group access and several cards is working with counting cards, but possibly not the persons entering
- Group access and identification PIN cannot be used together. The same keys are used to finalize the group and to start with identification PIN.

Anti-Passback

- Anti-Passback is working with cards, a person with several cards can pass his other cards to unauthorized persons
- Anti-Passback can be bypassed if you offer the card to multiple readers within opening time without entering. Once entered Anti-Passback is working.

CP service

- Shutting down the service an exception will be shown. After restart the service will work as expected.

SQL database

- Default settings use the small date-time format: Only hh:mm is stored in the database. Seconds are rounded. If needed the exact time can be looked up in the MsgLogs.

WAV-files

- If the Wav-Files used in the APE are not working, please check under Windows\Media if they exist there and if necessary correct the settings in the ClientIni-file

Access Professional Edition V3.3, build 3.3.1.2

Date: 23.05.2016

Hotfix

- Enrolment reader LECTUS 5000 MD supported
Reader can be used without error message and ACPers shutting down. Enrolling of cards working

Improvements, fixed issues and customer complaints

ID#	Description
145860	LECTUS 5000 MD not working

Access Professional Edition V3.3, build 3.3.1.1

Date: 20.04.2016

New Features

- Support of standard communication protocol OSDP v2.1.6 via RS485 interface for encrypted bus communication between reader and controller
- Support of ancillary MS SQL database for event data to enable further utilization/management of log data in standardized data structure
- New common AMC firmware for AccessPE 3.3 and BIS/ACE 4.2
- Updated SDK for cardholder data V1.3.0.2
- Improved documentation
- Bug fixing of known issues

Improvements, fixed issues and customer complaints

ID#	Description
135410	SDK Demo App: Improvements of user interface
135691	Configurator: Improvement of random screening configuration
137588	Configurator: Support of AMC I/O boards 2 & 3 by Emergency license
138036	Logbook: Special characters for entrances like ÅÖÜ now displayed in logbook
138614	Improvements of alarm message handling
139398	Configurator: Max number of days to store log messages can be configured now
139605	Configurator: One Configurator instance can change the data at the same time
143441	Personnel Management: Improved focus handling for search field
143497	LAC-SP do not stop, in case of uninstalling clients
144287	Configurator: It is now prevented to have more than one active Configuration session
134476	LAC-SP stability improvements
144790	Pegasys: Improved deleting of Pegasys cards

Access Professional Edition and *SDK for cardholder data* compatibility list

The installed Access Professional Edition release must match to a corresponding *SDK for cardholder data* version. In case of incompatibility, the *SDK for cardholder data* is not able to connect to the Access PE service.

The *SDK for cardholder data* is replacement for the former *API for cardholder data*.

Access Professional Edition release	SDK for cardholder data version
3.3.1.1	1.3.0.2

See also notes in chapter *Known limitations and restrictions*.

New AMC Firmware: x20

The AccessPE 3.3 installation setup includes also the new AMC firmware.

The latest AMC firmware version listed below should be used with AccessPE 3.3.

AMC type /Reader technology	Firmware filename
AMC2-4W/Wiegand	LCMV3741.RUN
AMC2-4R4/L-BUS	LCMV6020.RUN
AMC2-4R4/BG900	LCMV6120.RUN
AMC2-4R4/OSDP	LCMV6220.RUN

Installation Notes for Windows 10

For details regarding installation of Windows 10 refer to the section of the release notes of Access Professional Edition V3.2, build 3.2.1.10 in this document.

Known limitations and restrictions

Upgrade to Access PE 3.3

- If the setup file for an upgrade to Access Professional Edition 3.3 is started, the install routine uninstalls the existing Access Professional Edition version. The configuration can be saved during this procedure. For the final installation, the setup file has to be started again.
- In case of an update from Access Professional Edition 3.0 or an earlier release to the new release 3.3, all single authorizations IDS-ON / - OFF assigned to persons will be lost. To keep your configuration consistent, follow the instructions below:
 - Before starting the installation of release 3.3, create a report of “Authorization-persons” by selecting all IDS-ON / -OFF authorization. Look for persons which are assigned to this specific authorizations.

- Start the *Configurator*, select each entrance configured as door model 14 by a double click, and update the entrance by clicking OK.
- Save the configuration and send it to the LAC-Service.
- Start *Personnel Management*, select the persons with single authorization for IDS-ON / -OFF authorization, and set the authorization again.

Video devices supported

- Access PE 3.3 supports the video cameras as listed under:
<http://ipp.boschsecurity.com/integration-partner-program/tools/video-tools/firmware-overview/hardware-to-firmware/hardware-to-firmware>.
- Access PE supports searching for these devices in the network, live video, creating a snapshot and playback directly from the device (SD-card or CF-card recording).
- In addition, Access PE does support Divar IP 2000, however it does not support playback managed by VRM. For playback Divar IP 2000 needs to be re-configured to have the cameras directly record on Divar IP 2000 as an iSCSI target.
- For requirements beyond the support within APE, please refer to other Video Management System solutions, as e.g. Bosch Video Management System or Milestone XProtect.

Emergency Backup license ASL-APE2P-EBL and Milestone integration

- The emergency backup license also supports the Milestone X-Protect integration. If the Milestone X-Protect integration shall be enabled, the file ...*BOSCH*\Access Professional Edition\PE\Data\Cfg*Client.ini* needs to be modified. See below.
[General]
BoschApeMileStoneEnabled=Y
- In case that an emergency backup license and a Milestone X-Protect license are activated in parallel, the parameter *BoschApeMileStoneEnabled* has also to be set to “Y”.
- The default setting of the parameter *BoschApeMileStoneEnabled* is “N”. In this case, the internal Bosch video verification is enabled.
- After changing the parameter *BoschApeMileStoneEnabled*, the Access PE server should be rebooted.

Installation settings for the SDK for cardholder data

- If the SDK for cardholder data is installed on a PC on which an Access Professional Edition server or client is also installed, the SDK for cardholder data should only access to the Access PE on the local PC.
- If the API for cardholder data version V1.0.10 shipped with the AccessPE release 3.2. is updated by the latest SDK for cardholder data version 1.3.0.2, the API V1.0.10 needs to be uninstalled before.

Application icons disappear

- In case that an AccessPE application icon disappears, clear the Windows icon cache. For more details, refer to the Microsoft support web page.

Reader

- Only reader for L-Bus protocol are supporting write access e.g. for Pegasys offline systems.
- In case of OSDP reader installation, the OSDP reader might take several seconds to get into operation after a configuration is updated.
- If an OSDP v2 reader is configured by an AccessPE (A) and should be re-configured at an AccessPE (B), the reader needs to be set in installation mode.

Video Verification

- One AMC supports only one door model with Video Verification.
- One additional AMC must be used for each additional door model with Video Verification.

AMC

- If an AMC is configured by a system AccessPE (A) and re-configured at a system AccessPE (B), the AMC needs to reset.
- If an AccessPE in server mode is re-installed on a PC and the previous existing configuration is lost, AMCs, which are still in operation needs to reset.

VSDK

- Installation of the VSDK on Virtual Machines is not supported.

Door model 7a: Main authorization has no influence

- Authorization is implicit given. Setting the authorization manually does not make any difference.

Exit reader and arming

- Arming is not activated at exit reader, even reader has a keypad. System asks to enter a PIN, but this has no impact to arming.

Anti pass-back functionality

- Anti pass-back with timeout parameter and group check is limited to readers connected to a single AMC.
- Anti pass-back with area check works with readers connected to multiple AMCs.

Access Professional Edition V3.2, build 3.2.1.10

Date: 14.12.2015

New Features

- Microsoft *Windows 10 Pro x64 Support*
- API for cardholder data
API with development support tools for interfacing cardholder data, open/close door control and T&A / payroll systems
- Enhanced emergency license
The X-Protect integration for Milestone, API for Cardholder Data and 512 reader support are usable with the emergency license
- Video SDK 5.90 integrated, support of a selected range of latest Bosch video devices.
- 512 reader license support for all regions
- Improved documentation

Fixed issues and customer complaints

ID#	Description
123774	Personnel Management: Set location of all present persons to --unknown--: Now the events appear in the logbook
125667	Personnel Management: Double assignment of same card to a person is now prevented
129051	The persons limit is now the number of cardholders no more the number of cards
129069	33 or more AMCs are now listed in the status bar
129124	Improvement on logging for Personnel Management "Online swipe" on client
131361	Personnel Management: Wrong handling of locking after "Cancel" and changing the focus of the selected person is now fixed
132239	State of AMC was sometimes not correct if more than 32 AMC are configured
133480	Video verification while downloading 10000 persons on AMC improved

Access Professional Edition and API for cardholder data compatibility list

The installed Access Professional Edition release must match to a corresponding API for cardholder data version. In case of incompatibility, the API for cardholder data is not able to connect to the Access PE service.

Access Professional Edition release	API for cardholder data version
3.2.1.10	1.0.10.0

See also notes in chapter *Known limitations and restrictions*.

Installation Notes for Windows 10

Supported Windows 10 upgrade paths

1. The Access Professional Edition 3.2 can be installed on a PC with a pre-installed Windows 10 Professional Edition x64. Please use a language pack that supports your language. For the installation of language packs please see the hints mentioned below.
2. If the Access Professional Edition 3.2 is installed on a computer using Windows 7, you can upgrade to Windows 10. Please use the official upgrade tools for Windows 10 from Microsoft (e.g. the MediaCreationTool).

Installation of Language Packs for Windows 10 (Hints)

- Install OS language packs using lpksetup (at the command prompt with administrator rights)
- Configure a language:
 - Select your language.
 - Make sure, that the language preferences show your language at the top.
 - Change the System Locale.
 - Copy your language settings to the system account and default user.

Enrollment reader support

- For Pegasys R/W reader use the device parameters from the ISO image:
 - 3rdParty\Interflex\Device Parameters Interflex
- For LECTUS enroll 5000 MD reader use the latest driver from the ISO image:
 - 3rdParty\phg Admitto

.NET 3.5 Installation

The Video SDK requires the .NET 3.5 framework. This is included in Windows 10 but not enabled by default.

To enable this feature:

1. Open Control Panel.
2. Select “Programs and Features” and from there “Turn Windows features on or off”.
3. Select “.NET Framework 3.5”. The Sub-Features are not required.

This step requires administrative privileges and a running internet connection.

If this does not work for you (i.e. you are not connected to the internet) use the following workaround:

- Mount a windows 10 installation kit (e.g. to F:)
- use `"dism /online /enable-feature /featurename:NetFx3 /all /source:F:\sources\sxs /limitaccess"`

Known limitations and restrictions

Upgrade to Access PE 3.2

- If the setup file for an upgrade to Access Professional Edition 3.2 is started, the install routine uninstalls the existing Access Professional Edition version. The configuration can be saved during this procedure. For the final installation, the setup file has to be started again.
- In case of an update from Access Professional Edition 3.0 or an earlier release to the new release 3.2, all single authorizations IDS-ON / - OFF assigned to persons will be lost. To keep your configuration consistent, follow the instructions below:
 - Before starting the installation of release 3.2, create a report of “Authorization-persons” by selecting all IDS-ON / -OFF authorization. Look for persons which are assigned to this specific authorizations.
 - Start the *Configurator*, select each entrance configured as door model 14 by a double click, and update the entrance by clicking OK.
 - Save the configuration and send it to the LAC-Service.
 - Start *Personnel Management*, select the persons with single authorization for IDS-ON / -OFF authorization, and set the authorization again.

Video devices supported

- Access PE 3.2 supports the video cameras as listed under:
<http://ipp.boschsecurity.com/integration-partner-program/tools/video-tools/firmware-overview/hardware-to-firmware/hardware-to-firmware>.
- Access PE supports searching for these devices in the network, live video, creating a snapshot and playback directly from the device (SD-card or CF-card recording).
- In addition, Access PE does support Divar IP 2000, however it does not support playback managed by VRM. For playback Divar IP 2000 needs to be re-configured to have the cameras directly record on Divar IP 2000 as an iSCSI target.
- For requirements beyond the support within APE, please refer to other Video Management System solutions, as e.g. Bosch Video Management System or Milestone XProtect.

Feature: Access as group

- Reader without keyboard: To finish the access as a group, the exact number of required persons must be reached.
- Reader with keyboard: The last person of the group has to confirm the access of the group by pressing the *Enter* button of the keyboard.

Milestone integration and area behavior parameters

- In case of a Milestone X-Protect configuration, the area behavior parameters should not be set.

Emergency Backup license ASL-APE2P-EBL and Milestone integration

- The emergency backup license also supports the Milestone X-Protect integration. If the Milestone X-Protect integration shall be enabled, the file ...*BOSCH*\Access Professional Edition\PE\Data\Cfg*Client.ini* needs to be modified. See below.
[General]
BoschApeMilestoneEnabled=Y
- In case that an emergency backup license and a Milestone X-Protect license are activated in parallel, the parameter *BoschApeMilestoneEnabled* has also to be set to “Y”.
- The default setting of the parameter *BoschApeMilestoneEnabled* is “N”.
In this case, the internal Bosch video verification is enabled.

Installation settings for the API for cardholder data

- If the API for cardholder data is installed on a PC on which an Access Professional Edition server or client is also installed, the API for cardholder data should only access to the Access PE on the local PC.

Access Professional Edition V3.1, build 3.1.7.7

Date: 06.07.2015

New features

- Video SDK 5.82 implemented, support of a selected range of latest Bosch video devices.
- Improved documentation

Fixed issues and customer complaints

ID#	Description
99428	A necessary video setting was not described in online help
99429	Configuration, button description was not consistent in German version
102939	ACAlarm stability issue fixed
104912	Doormodel 7b, input of floor numbers with two digits not possible
105068	New cameras do not work with VSDK V4.32.03.01 (new VSDK 5.82 added)
106367	Access Monitoring area issue fixed
107187	Configurator: Card type was set to default after setup with previous saved data
107381	APE customer gets randomly access rights by random
107574	APE with Pegasys: Delete person with cards in one step does not delete the whole person record
109212	Context menu of door control in map : 'Door control' independent from authorization, is always available
110576	Wrong number of possible offline groups in documentation
111269	Log viewer: System generates a lot of online/offline messages if continuous mode is off
111285	Configuration: GUI size adjusted as parts of screen were cut off
111346	Reporting, locked persons with assigned card do not appear in report "Locked persons"
112109	Setup, folders are not always deleted after uninstall
112920	Licensing of 512 readers (Chinese Market only) corrected
113018	Reporting: Includes card number 2 and card number 3 in reports persons and persons / authorizations
113019	Fixed search for card number 2 or card number 3
113201	Video Clip is reported as stored, but isn't stored
115021	Holidays depending on eastern can be defined but do not work
115041	Create video clip from of the log viewer is not possible
119207	APE with Pegasys: Fixed issue to support additional offline doors by another facility card

Known limitations and restrictions

- With APE V3.1 Windows XP is not longer supported
- After upgrade to version 3.1 or higher no backwards compatibility for the authorization configuration.
Work around: In this case use a backup of your previous configuration or reconfigure the authorizations.
- Pegasys: Depending on encoding of "Valid for" (1h, 1d, 1 week etc.), a card cannot be used for a second person in this period. (Standard setting is one day)
In case that an AMC is offline, this period is enhanced until the AMC is online again
- If the APE 3.1 is installed in a domain server environment, sharing of the "data" folder is not set.

Work around: Set the share of the folder manually as “APEDATA\$”

- For using evaluators with more than 9 floors, the input of floor number needs 2 digits. Change the reader text configuration in the configuration dialogue. Change the placeholder for floor numbering from “_” to “__”
- After a new installation, the number of activated card types should be verified. The number of activated card types should be reduced to the maximum of four.

Video SDK 5.82

- Video SDK is not supported on Windows Server operation systems.
- Windows 7 SP1 (32bit, 64bit in 32bit emulation mode), .Net framework 3.5 required.
- All Microsoft updates and hot fixes are expected to be installed on target PCs, graphics card drivers are also expected to have the latest officially released version.
- Supported graphics cards:
 - The list of supported graphics cards lists all graphics cards that have been successfully tested with Video SDK. Graphics cards not listed here must be at least fully compatible to DirectX 9.
 - ATI :
FirePro V2460 V3700 V3800 V3900 V4800 V4900 V5700 V5800
V5900 V7900 V8800
FireGL V5600 V7200
 - NVIDIA :
Quadro 600 2000 5000
Quadro FX 580 1400 1500 1700 1800 3500 3700 3800 4000 4600
4700 4800
Quadro Fermi 2000 4000
NVS 295 440 450
GTS 52

Access Professional Edition V3.0, build 3.0.5

Date: 06.02.2015

New features

- No new features

Fixed issues and customer complaints

ID#	Description
106245	Milestone Time zone issues
101881	Disabled unused "Web access to PE" on "Access Control Administration" at Milestone XProtect Client

Access Professional Edition V3.0, build 3.0.4

Date: 23.10.2014

New features

- No new features

Fixed issues and customer complaints

ID#	Description
102116	Authorization group with time model doesn't work

Access Professional Edition V3.0, build 3.0.3

Date: 01.10.2014

New features

- No new features

Fixed issues and customer complaints

ID#	Description
101801	Milestone: APE together with Milestones does not work without APE-Video-License
101857	MapEditor and MapViewer is not showing device delete notification (crossed symbol) for camera devices

Access Professional Edition V3.0, build 3.0.2

Date: 21.08.2014

New features

- No new features

Fixed issues and customer complaints

Description
Communication with 12 th and 24 th AMC Online status corrected on the Log Viewer UI (Existing known bug: After AMC Offline, door status may be wrong, it is actualized after the next access with AMC online)
Help files for configuration dialog for German language is updated.

Known limitations and restrictions

- Existing Log viewer delay in updating device states and events still persist.
- Camera search will not work in case of workstation is configured multiple IP address in the network settings.

Access Professional Edition V3.0, build 3.0.1

Date: 07.07.2014

New features

- No new features

Fixed issues and customer complaints

Description
Debug log information issue has been fixed for simplified Chinese & Russian language
Door model name display issue has been fixed for simplified Chinese & Russian language
Overwritten Alarm message has been fixed for various Input/output point
Help files for configuration dialog all language is updated

Known limitations and restrictions

- After AMC Offline, door status may be wrong, it is actualized after the next access with AMC online.
- Existing Log viewer delay in updating device states and events still persist.
- Camera search will not work in case of workstation is configured multiple IP address in the network settings.

Access Professional Edition V3.0, build 3.0.0

Date: 09.04.2014

New features

- Introduced new Map editor UI under AC Config application to configure building floor plans.
 - Map editor gives flexibility to drag and drops the access control & camera devices on the maps.
 - Building floor plan maps can be organized as map tree to represented their building floor plan in a hierarchy model.
- Alarm management UI enhanced to show animation alarms on the devices, in case of alarm.
 - In case of alarm, respective map will be populated automatically along with animation alarm to the operators.
 - Supports map navigation
 - Supports several control commands for access control devices.
 - Supports live device state updates on the maps.
- Extended Enrollment Readers
 - Field readers that are connected to AMC can be reusable for card enrollment process.
 - Supports LECTUS enroll 5000 MD – MIFARE Data Recording (PXX) for card enrollment.
- Support new Mifare 56bit card type.
- Support new 63 bit Bosch Code card data record format.

Fixed issues and customer complaints

Description
APE client Installation works with domain network
Revised elevator configuration
Elevator pin supports more than 1 digit
If there was an Access Personal Edition and an Access Professional Edition 2.0 installed on the same computer, the registry key of the Access Personal Edition remains and has to be removed manually
Separate PIN code for arming / disarming
Added Pegasys multiple authorization button
Communication with 64 th AMC is connected successfully
Blocking Wiegand Extension Board to 4R4 AMC
Test connection to AMC is enabled after the configuration is active
User can select manual mode in Card definition dialog
Double click selected alarm for acknowledging alarm is removed to avoid accidentally acknowledge. Only button click allowed for acknowledge any alarm
Avoid multiple LAC entries with same IP address
Pegasys: A card with valid from cannot longer be written
Pegasys: Defining the "Valid for" after rewriting the time is wrong for month and Year
APE accepts only „old“ facility cards with a length of 85 Byte. However, the factory standard at Normbau is a facility card with the size of 89 Byte
APE can use only one sector for Pegasys, therefore a quantity structure of 256/2 (door groups/single authorizations). APE creates no error when reading a bigger card.

Known limitations and restrictions

- After AMC Offline, door status may be wrong, it is actualized after the next access with AMC online

- Existing Log viewer delay in updating device states and events still persist.
- Camera search will not work in case of workstation is configured multiple IP address in the network settings.

Access Professional Edition V2.1 TU1, build 2.7.60

Date: 01.10.2012

New features

- No new features

Fixed issues and customer complaints

Description
Additional output signals (e.g. door opened) can be configured, but they are not sent to the AMC
The time models init card for offline systems was written incorrect, time models could not be assigned correctly to a person
The evaluation of the validity of offline cards has been corrected
Installshield gives a warning, that older versions have to be deinstalled before installation
The door status showed not the correct state of the door and sometimes the context menu freezes
Support Mifare Desfire readers with new software to avoid that cards are destroyed while writing offline rights
The APE persons dialog crashes when using Admitto enrolment readers
Log entries with daylight saving incorrect
The coming/leaving time of persons was not always shown in the main dialog

Known limitations and restrictions

- After AMC Offline, door status may be wrong, it is actualized after the next access with AMC online.
- If there was an Access Personal Edition and an Access Professional Edition 2.0 installed on the same computer, the registry key of the Access Personal Edition remains and has to be removed manually.
- Camera search will not work in case of workstation is configured multiple IP address in the

Access Professional Edition V2.1, build 2.7.52

Date: 20.06.2012

New features

- APE supports Windows 7 and Windows Server 2008
- APE is installable and workable without Video SDK.
- Confirmation of successful license activation.

Fixed issues and customer complaints

Description
Save CP settings at update
Grant access after time out of video surveillance if configured
Appearance of message filter fixed, filtering of messages with more than three digits
Setting of number of bits and modes in card definition fixed
Assignment single access entries fixed
Searching is now also possible by pressing the "Enter"-key
Update of license dialog fixed
Log entries with daylight saving incorrect
Configuration of video verification per reader instead of door
Pin transfer to LAC fixed
Change of display texts in all languages
Door Pin will not be checked against identification PIN
Using Pegasys you often have the message maximum reached
Reset of PIN error counter fixed
Update of Wiegand card definition on system update fixed
Randomly lost of the authorization when cardholder is deleted
Layout of persons table fixed
User cannot start up Configurator via personal management and client PC
LAC sent timemodels only for 2 months
Cards are not correctly written if MAG set with sector 0
USB-Reader and entry read/write reader writing different information
Door PIN is not door specific defined

Known limitations and restrictions

- Video SDK is not able to save files with Windows Server 2008.