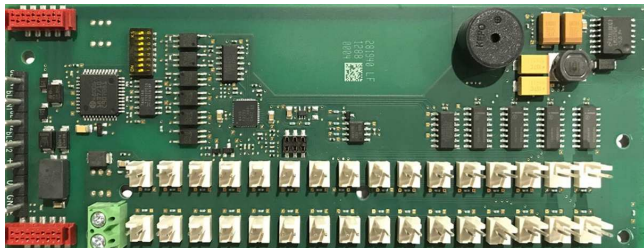


# ATB 420 LSNI Display module



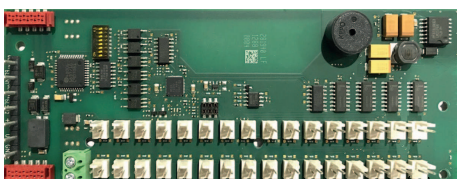
- ▶ 32 outputs with flashing capability
- ▶ Onboard alarm buzzer
- ▶ Contact for output test

## Functions

The ATB 420 LSNI may be used to drive LEDs or other low current consuming devices to display the status and events of field devices.

It is freely programmable according to application requirements.

The ATB 420 LSNI module has integrated isolators for maintaining the function of the elements on the LSN loop in the event of wire interruptions or shortcircuits.



LED 16 - LED 1  
LED 32 - LED 17



The display module has 32 outputs, each with

- 600 Ω resistor
- 5 V

And permanent ground, 5 V are switched.

## Regulatory information

EN54-17:2005

EN54-18:2005

Region	Regulatory compliance/quality marks	
Europe	CE	ATB 420

Region	Regulatory compliance/quality marks	
Morocco	CMIM	ATB 420 LSN

## Parts included

Quantity	Component
1	ATB 420 LSNI Display module
1	Accessory bag with terminals for crimping

### **i** Notice

For crimping the supplied terminals you need a crimp tool, an upper crimp die and a lower crimp die for conductor cross section 28 to 22 AWG or 22 to 18 AWG.

## Technical specifications

### Electrics

Operating voltage	
• LSN part	+15 V DC to +33 V DC
• AUX power	+8 V DC to +30 V DC
Current consumption	
• LSN part	3 mA

• other functions	All outputs off: 10mA@24V, 15mA@8V  All outputs on, max. load: 65mA@24V, 170mA@8V
-------------------	---

### Mechanics

Dimensions (H x W x D)	163 x 60 x 13.5 mm
Weight	50g

### Environmental conditions

Permissible operating temperature	-5 °C to +50 °C
Permissible storage temperature	-20 °C to +60 °C

### Special features

Output flashing frequency	1.25 Hz
---------------------------	---------

### Ordering information

#### ATB 420 LSNI Display module

Display module

Order number <b>ATB 420 LSNI  </b>	Asset Key <b>5775</b>	Vepos <b>3611</b>
------------------------------------	--------------------------	----------------------

#### Represented by:

**Europe, Middle East, Africa:**  
Bosch Security Systems B.V.  
P.O. Box 80002  
5600 JB Eindhoven, The Netherlands  
[www.boschsecurity.com/xc/en/contact/](http://www.boschsecurity.com/xc/en/contact/)  
[www.boschsecurity.com](http://www.boschsecurity.com)

**Germany:**  
Bosch Sicherheitssysteme GmbH  
Robert-Bosch-Platz 1  
D-70839 Gerlingen  
[www.boschsecurity.com](http://www.boschsecurity.com)

**North America:**  
Bosch Security Systems, LLC  
130 Perinton Parkway  
Fairport, New York, 14450, USA  
[www.boschsecurity.com](http://www.boschsecurity.com)

**Asia-Pacific:**  
Robert Bosch (SEA) Pte Ltd, Security Systems  
11 Bishan Street 21  
Singapore 573943  
[www.boschsecurity.com/xc/en/contact/](http://www.boschsecurity.com/xc/en/contact/)  
[www.boschsecurity.com](http://www.boschsecurity.com)