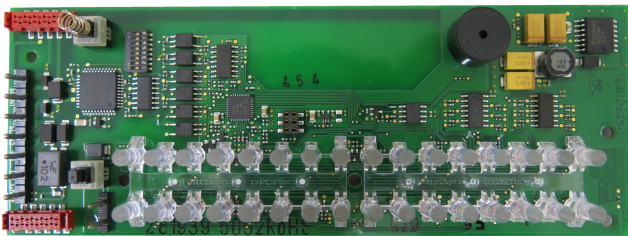


ATG 420 LSNi Display Module

www.boschsecurity.com



BOSCH
Invented for life



- ▶ 32 indicator points
- ▶ Lamp test button
- ▶ Multicolor LEDs
- ▶ Buzzer
- ▶ Temper detection switch

Functions

The ATG 420 LSNi Display Module displays conditions of field devices or detection zones. The ATG 420 LSNi may be installed inside the BAT 100 LSN housing. To display the conditions, multicolour LEDs are used which may be programmed and labeled according to the application requirements in three different colours. The colours red, green and yellow can be used either in solid or blinking state.

The ATG 420 LSNi module has integrated isolators for maintaining the function of the elements on the LSN loop in the event of wire interruptions or shortcircuits.

Certifications and approvals

EN54-17:2005

EN54-18:2005

Technical specifications

Electrics

Operating voltage	
• LSN part	+15 V DC to +33 V DC
• AUX power	+8 V DC to +30 V DC

Current consumption	
• LSN part	3 mA
• other functions	- all 32 LEDs off: max. 10 mA@ 24 V DC or max. 15 mA@ 8 V DC - all 32 LEDs on: max. 25 mA@ 24 V DC or max. 60 mA@ 8 V DC

Mechanics

Dimensions (H x W x D)	163 x 60 x 16.1 mm
Weight	55g

Environmental conditions

Permissible operating temperature	-5°C to +50°C
Permissible storage temperature	-20°C to +60°C

Special features

LED flash frequency	1.25Hz
LED colors	Multicolor (red, green, yellow)

Ordering information

ATG 420 LSNi Display Module
Display Module with 32 LEDs
Order number **ATG 420 LSNi**

Represented by:

North America:
Bosch Security Systems, Inc.
130 Perinton Parkway
Fairport, New York, 14450, USA
Phone: +1 800 289 0096
Fax: +1 585 223 9180
security.sales@us.bosch.com
www.boschsecurity.us

Europe, Middle East, Africa:
Bosch Security Systems B.V.
P.O. Box 80002
5617 BA Eindhoven, The Netherlands
Phone: + 31 40 2577 284
Fax: +31 40 2577 330
emea.securitysystems@bosch.com
www.boschsecurity.com

Asia-Pacific:
Robert Bosch (SEA) Pte Ltd, Security
Systems
11 Bishan Street 21
Singapore 573943
Phone: +65 6571 2808
Fax: +65 6571 2699
apr.securitysystems@bosch.com
www.boschsecurity.asia

China:
Bosch (Shanghai) Security Systems Ltd.
203 Building, No. 333 Fuquan Road
North IBP
Changning District, Shanghai
200335 China
Phone +86 21 22181111
Fax: +86 21 22182398
www.boschsecurity.com.cn

Latin America and Caribbean:
Robert Bosch Ltda Security Systems Division
Via Anhanguera, Km 98
CEP 13065-900
Campinas, Sao Paulo, Brazil
Phone: +55 19 2103 2860
Fax: +55 19 2103 2862
latam.boschsecurity@bosch.com
www.boschsecurity.com