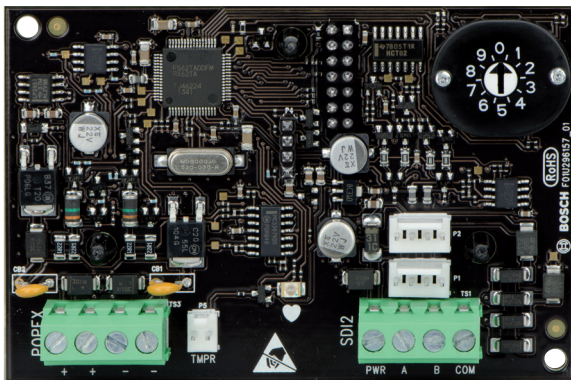


# B299 Expansion module, SDI2

www.boschsecurity.com



**BOSCH**  
Invented for life



- ▶ Provides point identification for up to 100 connected addressable initiating devices using POPITs
- ▶ Supervises wiring to devices for circuit integrity
- ▶ Expands the number of points in the system
- ▶ Compact size
- ▶ Interconnect wiring connectors for easy installation

The B299 POPEX Module is an SDI2 compatible device. The module communicates to the control panel over the SDI2 bus, and provides support for up to 100 POPIT (Point Of Protection Input Transponder) devices. This occurs over a single expansion loop using two pairs of terminals.

## System overview

Each module installs in the control panel enclosure or in an adjacent approved enclosure. Future system expansion is very economical as the module supports zone expansion through supporting D9127U/T POPIT modules and POPIT'ed detectors. The POPIT modules can be placed anywhere along the two-wire data expansion loop from the module.

## Certifications and approvals

Region	Regulatory compliance/quality marks	
USA	ANSI-SIA	CP-01-2010-Control Panel Standard - Features for False Alarm Reduction
	UL	Underwriters Laboratories
	UL	UL 1023 - Household Burglar Alarm System Units
	UL	UL 1076 - Proprietary Burglar Alarm Units and Systems

Region	Regulatory compliance/quality marks	
	UL	UL 1610 - Central Station Burglar Alarm Units
	UL	UL 1635 - Standard for Digital Alarm Communicator System Units
	UL	UL 294 - Standard for Access Control Units and Systems
	UL	UL 365 - Police Station Connected Burglar Alarm Units
	UL	UL 609 - Standard for Local Burglar Alarm Units and Systems
	UL	UL 636 - Holdup Alarm Units and Systems
	UL	UL 864 - Standard for Control Units and Accessories for Fire Alarm Systems (10th edition)
	UL	UL 985 - Household Fire Warning System Units (6th edition)
	FM	Central Station
	FM	Local Protective Signaling
	FM	Remote Station
	CSFM	California Office of The State Fire Marshall
	FCC	Part 15 Class B

Region	Regulatory compliance/quality marks	
Canada	ULC	Underwriters Laboratories of Canada
	ULC	CAN/ULC S303 - Local Burglar Alarm Units and Systems
	ULC	CAN/ULC S304 - Standard for Signal Receiving Center and Premise Burglar Alarm
	ULC	CAN/ULC S545 - Residential Fire Warning System Control Units
	ULC	ULC-ORD C1023 - Household Burglar Alarm System Units
	ULC	ULC-ORD C1076 - Proprietary Burglar Alarm Units and Systems
	IC	ICES-003 - Information Technology Equipment (ITE)

## Installation/configuration notes

### Mounting

Mount the module into the enclosure's 3-hole mounting pattern using the mounting screws and mounting bracket.

### Wiring

Use the control panel SDI2 terminals labeled R, Y, G, B (PWR, A, B, COM) when wiring to the module. Connect the control panel terminals to the module terminals labeled R, Y, G, B (PWR, A, B, COM). You can also use the SDI2 interconnect cable.

### Compatibility

POPIT devices	D9127U/T POPIT module ZX776Z/ZX794Z PIR motion detector ZX835 TriTech motion detector ZX935Z/ZX938Z PIR motion detector ZX970 TriTech motion detector D278S 12V smoke base D298S 24V smoke base F220-B6PM POPIT smoke (master) F220-B6PS POPIT smoke base FMM-462 Manual station FMM-462-D Manual station double action
---------------	---

## Parts included

Quantity	Component
1	Module
1	Hardware pack

### Represented by:

**Europe, Middle East, Africa:**  
Bosch Security Systems B.V.  
P.O. Box 80002  
5600 JB Eindhoven, The Netherlands  
Phone: + 31 40 2577 284  
emea.securitysystems@bosch.com  
emea.boschsecurity.com

**Germany:**  
Bosch Sicherheitssysteme GmbH  
Robert-Bosch-Ring 5  
85630 Grasbrunn  
Germany  
www.boschsecurity.com

**North America:**  
Bosch Security Systems, LLC  
130 Perinton Parkway  
Fairport, New York, 14450, USA  
Phone: +1 800 289 0096  
Fax: +1 585 223 9180  
onlinehelp@us.bosch.com  
www.boschsecurity.us

**Asia-Pacific:**  
Robert Bosch (SEA) Pte Ltd, Security Systems  
11 Bishan Street 21  
Singapore 573943  
Phone: +65 6571 2808  
Fax: +65 6571 2699  
apr.securitysystems@bosch.com  
www.boschsecurity.asia

Quantity	Component
1	Interconnect cable
1	Installation manual

## Technical specifications

### Properties

Dimensions	2.9 in x 5.0 in x 0.6 in (73.5 mm x 127 mm x 15.25 mm)
Weight	11.2 oz (0.30 kg)

### Environmental considerations

Relative humidity	5% to 93% at +32°C (+90°F)
Temperature (operating)	0°C to +49°C (+32°F to +120°F)

### Power requirements

Current	Standby: 35 mA + total device current Alarm: 35 mA + total device current
Voltage (input)	12 VDC

### Wiring

Terminal wire size	12 AWG to 22 AWG (2.0 mm to 0.65 mm)
SDI2 wiring	Maximum distance – Wire size (unshielded wire only): 200 ft (60 m) - 22 AWG (0.65 mm), 500 ft (152 m) - 18 AWG (1.02 mm)
POPIT loop wiring	Maximum wire length: 1800 ft (548 m) - 22 AWG (0.65 mm), 4600 ft (1402 m) - 18 AWG (1.02 mm)

## Ordering information

### B299 Expansion module, SDI2

Provides system expansion support for up to 100 POPIT devices  
Order number **B299**