

CONETTIX Universal Dual Path Communicator

B465

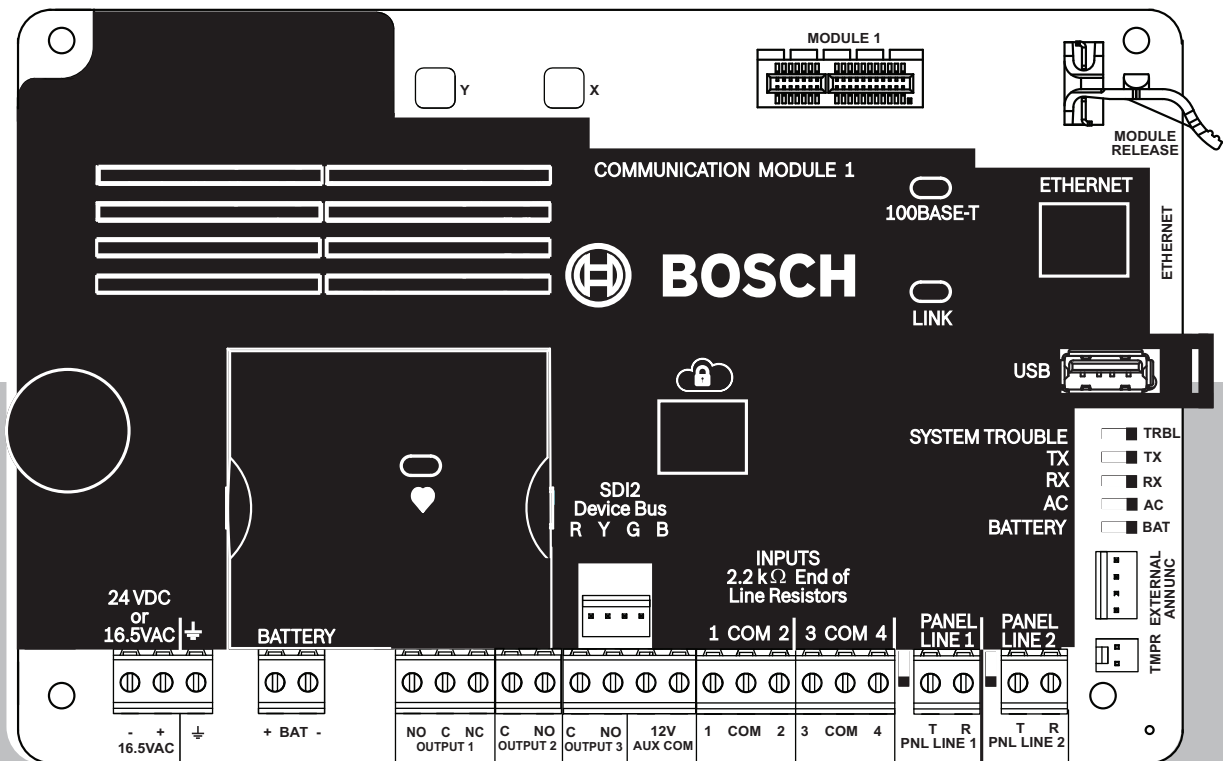


Table of contents

1	Introduction	5
1.1	<i>Requirements</i>	5
2	Firmware version 2.14.002	6
2.1	<i>What's fixed</i>	6
2.1.1	<i>Improved recovery from Cellular Network Updates</i>	6
3	Firmware version 2.14.000	7
3.1	<i>What's new</i>	7
3.1.1	<i>B444-A2 and B444-V2 support</i>	7
4	Firmware version 2.11.510	8
4.1	<i>What's new</i>	8
4.1.1	<i>B444-A Plug-in Cellular Communicator Module is not recognized</i>	8
4.2	<i>What's fixed</i>	8
4.2.1	<i>DNS hostname lookups not working when using only a B444-A or B444-V</i>	8
5	Firmware version 2.11.506	9
5.1	<i>What's new</i>	9
5.1.1	<i>Support for updated B465 certificates</i>	9
5.1.2	<i>Improved connectivity to the Verizon network</i>	9
5.1.3	<i>Update to the B444-A Cellular Communicator</i>	9
6	Firmware version 2.09	10
6.1	<i>What's new</i>	10
6.1.1	<i>B444-A and B444-V support</i>	10
6.1.2	<i>Security of Connected Devices</i>	10
7	Firmware version 2.08	11
7.1	<i>What's fixed</i>	11
7.1.1	<i>Updates to the bootloader</i>	11
7.1.2	<i>Updates to TCP keep alive</i>	11
8	Firmware version 2.01	12
8.1	<i>What's new</i>	12
8.1.1	<i>Incoming RPS connections</i>	12
8.1.2	<i>B444 signal strength indication</i>	12
8.1.3	<i>B465 cloud default parameters changed</i>	12
8.1.4	<i>APN usage for B442 and B443</i>	12
8.2	<i>What's fixed</i>	12
8.2.1	<i>Stabilization of cell card performance</i>	12
9	Firmware version 2.00	13
9.1	<i>Whats new</i>	13
9.1.1	<i>Updated digital dialer formats</i>	13
9.1.2	<i>Remote Connect Service support</i>	13
9.1.3	<i>Updated Account Setup options</i>	14
9.1.4	<i>B444 support</i>	14
9.1.5	<i>Remote Programming Support</i>	14
9.1.6	<i>Override for Answer RPS over Network</i>	14
9.1.7	<i>Local programming support on upgrade</i>	14
9.1.8	<i>Periodic Test Report</i>	14
9.1.9	<i>Operational improvements</i>	14
9.2	<i>Known issues</i>	14
9.2.1	<i>Modem Illa2 and GV3 and GV4 control panels</i>	14
9.2.2	<i>Event transmissions</i>	14

9.2.3	<i>Fast receiver supervision times</i>	15
9.2.4	<i>Periodic Test Report Configuration</i>	15
9.2.5	<i>B444 signal strength</i>	15
9.3	<i>Firmware version 2.01</i>	15
9.3.1	<i>What's new</i>	15
9.3.2	<i>What's fixed</i>	16
10	Firmware version 1.00.005	17
10.1	<i>Notable features</i>	17
10.1.1	<i>Updated B440/B441 support</i>	17
10.1.2	<i>Reporting Delay for Low Signal Strength default change</i>	17
10.1.3	<i>No Towers Reporting Delay default</i>	17
10.2	<i>Corrections</i>	17
10.2.1	<i>Cellular reliability</i>	17
10.2.2	<i>Signal strength</i>	17
11	Open source software	18

1 Introduction

These *Release Notes* are for the B465 with firmware version 2.14.002.

1.1 Requirements

The B465 supports the following:

Compatible receivers

(Bosch) Conettix D6600 Communications Receiver/Gateway
(Bosch) Conettix D6100IPv6 Communications Receiver/Gateway
(Bosch) Conettix D6100i Communications Receiver/Gateway

Compatible PSTN input reporting formats

Modem II
Modem IIe
Modem IIIa ²
Ademco Contact ID (SIA DC-05) +10 digit account codes
Pulse 3/1, 3/1 Checksum (2300 Hz ACK Tone)
Pulse 3/1, 3/1 Checksum (1400 Hz ACK Tone)
Pulse 4/2 (2300 Hz ACK Tone)
Pulse 4/2 (1400 Hz ACK Tone)
SIA (SIA8, SIA20) 110 and 300 baud

Compatible cellular modules

(2G/3G CDMA)
(2G CDMA)
(3G GPRS GSM)
(SIM card required) (3G/4G HSPA+ GSM)
(4G VZW LTE)
B444-A Conettix Plug-in 4G AMEC LTE Cellular Communicator (AMEC LTE)
B444-V CONETTIX Plug-in 4G VZW LTE Cellular Communicator (4G VZW LTE)
B444-A2 CONETTIX Plug-in 4G AMEC LTE Cellular Communicator (AMEC LTE)
B444-V2 CONETTIX Plug-in 4G VZW LTE Cellular Communicator (4G VZW LTE)

2 **Firmware version 2.14.002**

What's fixed

- *Improved recovery from Cellular Network Updates, page 6*

2.1 **What's fixed**

This section examines the corrections made in this firmware version.

2.1.1 **Improved recovery from Cellular Network Updates**

This device now handles when updates are released on the cellular network that could affect connectivity in a faster and better manner. There have been updates that could require manual intervention, this has been reduced or eliminated.

3 Firmware version 2.14.000

What's new

- *B444-A2 and B444-V2 support, page 7*

3.1 What's new

This section examines the new features of this firmware version.

3.1.1 B444-A2 and B444-V2 support

The system now supports B444-A2 (AT&T LTE) and B444-V2 (Verizon LTE) Plug-in cell modules.



Caution!

Activate the B444-A2/B444-V2 SIM card before inserting. Failure to do so might result in failed communications to the control panel/module. Upon first power-up of the B444-A2/B444-V2, it might take up to 20 minutes for the activation process to be completed.

4 Firmware version 2.11.510

What's new

- *B444-A Plug-in Cellular Communicator Module is not recognized, page 8*

What's fixed

- *DNS hostname lookups not working when using only a B444-A or B444-V, page 8*

4.1 What's new

This section examines the new features of this firmware version.

4.1.1 B444-A Plug-in Cellular Communicator Module is not recognized

A small number of B444-A cellular modules may report as 'invalid' during installation and will not be recognized by the B465. This version of firmware allows the cellular host device to properly recognize these B444-A modules. See Technical Bulletin *B444-A Plug-in Cellular Communicator Module Is Not Recognized* for more information.

4.2 What's fixed

This section examines the corrections made in this firmware version.

4.2.1 DNS hostname lookups not working when using only a B444-A or B444-V

When using only a B444-A or B444-V radio, and the DNS address is changed later, the DNS lookup is not performed properly. This version of firmware corrects this DNS lookup issue.

5 Firmware version 2.11.506

What's new?

- *Support for updated B465 certificates, page 9*
- *Improved connectivity to the Verizon network, page 9*
- *Update to the B444-A Cellular Communicator, page 9*

5.1 What's new

This section examines the new features of this firmware version.

5.1.1 Support for updated B465 certificates

B465 firmware v2.11 introduces a new security certificate in advance of the current certificate expiration in April, 2022. This certificate is used for most automation (integration) and RPS TLS connections to the panel. The B465 Cloud certificate is not affected. All Cloud connections will continue to function as they do today. RPS v6.11 has been updated to accommodate this new B465 security certificate automatically.

IMPORTANT:

Customers upgrading or installing firmware v2.11 must upgrade RPS to v6.11, and review other integrated applications (Bosch or 3rd Party) that need to use the new Bosch certificate, in order to maintain TCP connections to the B465 after March 2022. Customers using RPS with B465 firmware v2.10 or older will not be affected by the certificate expiration and operations will continue without interruption.

5.1.2 Improved connectivity to the Verizon network

FW V2.11 improves the management of the Verizon APN when using the B444-V or B444 Cellular Communicators, resulting in enhanced connection reliability.

5.1.3 Update to the B444-A Cellular Communicator

This firmware release configures the B444-A to insure that LTE connectivity is not disrupted when the AT&T 3G network is discontinued.

6 Firmware version 2.09

What's new

- *B444-A and B444-V support, page 10*
- *Security of Connected Devices, page 10*

6.1 What's new

This section examines the new features of this firmware version.

6.1.1 B444-A and B444-V support

The system now supports B444-A Plug-in cell module, AT&T LTE and B444-V Plug-in cell module, Verizon LTE.

B444-A/B444-V SIM card activation



Caution!

Activate the B444-A/B444-V SIM card before inserting. Failure to do so might result in failed communications to the control panel/module. Upon first power-up of the B444-A/ B444-V, it might take up to 15 minutes for the activation process to be completed.

6.1.2 Security of Connected Devices

In order to comply with the Security of Connected Devices Act (TITLE 1.81.26. Security of Connected Devices) and related legislation, this product uses a unique connection password.

The “RPS Passcode” for the initial connection to this product must match the unique Cloud ID of the product.

Ensure your RPS Operator uses the unique Cloud ID that is labeled on the product and included on the card in the box of the product.

7 Firmware version 2.08

What's fixed

- *Updates to the bootloader, page 11*
- *Updates to TCP keep alive, page 11*

7.1 What's fixed

This section examines the fixed issues of this firmware version.

7.1.1 Updates to the bootloader

This firmware release contains updates to improve the performance of the bootloader.

7.1.2 Updates to TCP keep alive

This firmware release contains performance improvements related to maintaining connections to the cloud.

8 Firmware version 2.01

What's new

- *Incoming RPS connections, page 12*
- *B444 signal strength indication, page 12*
- *B465 cloud default parameters changed, page 12*
- *APN usage for B442 and B443, page 12*

What's fixed

- *Stabilization of cell card performance, page 12*

8.1 What's new

This section examines the new features of this firmware version.

8.1.1 Incoming RPS connections

In addition to answering incoming calls from RPS using UDP (User Datagram Protocol), incoming calls from RPS using TCP (Transfer Control Protocol) are also supported. RPS version 6.07 is required for this modified connection method.

8.1.2 B444 signal strength indication

The B444 signal strength LED indication has been modified to more accurately represent performance. While LTE tower switching may still occur, their individual signal strength indications are more accurate.

8.1.3 B465 cloud default parameters changed

Cloud connections using Ethernet and/or cellular are now enabled as the default selection to allow for establishing communications.

8.1.4 APN usage for B442 and B443

The B442 and B443 plug-in cellular modules shall attempt connections using APNs in the following order:

1. Primary configured APN
2. gne
3. wylesse.apn
4. wylesse.com.attz

The plug-in cellular module will select and use the most appropriate APN.

If the APN is erroneous, the panel keypads may not display the details of this trouble condition.

8.2 What's fixed

This section examines the fixed issues of this firmware version.

8.2.1 Stabilization of cell card performance

Cell card stability enhancements are included within this firmware release.

9 Firmware version 2.00

What's new

- Updated digital dialer formats, page 13
- Remote Connect Service support
- Updated Account Setup options, page 14
- B444 support, page 14
- Remote Programming Support, page 14
- Override for Answer RPS over Network, page 14
- Local programming support on upgrade, page 14
- Periodic Test Report, page 14
- Operational improvements, page 14

Known issues

- Modem IIIa2 and GV3 and GV4 control panels, page 14
- Event transmissions, page 14
- Fast receiver supervision times, page 15
- Periodic Test Report Configuration, page 15
- B444 signal strength, page 15

9.1 Whats new

This section examines the new features of this firmware version.

9.1.1 Updated digital dialer formats

This firmware update supports the following digital dialer formats:

- Modem II
- Modem IIe
- Modem IIIa²

9.1.2 Remote Connect Service support

Remote Connect Service enables a secure control panel connection to remote programming software (RPS) using Bosch Cloud services. The service allows a secure TLS connection to a control panel without specific port and router settings and without a static IP or DNS.



Notice!

North America only

Remote Connect Services and Bosch Cloud services are currently available in North America only. Before you can utilize Remote connect service or cellular communication for reporting and RPS connections, you need to register for Bosch Installer Service at the Bosch Installer Services Portal, <https://installerservices.boschsecurity.com/>.

Refer to the descriptions below:

- Cloud Remote Connect (Ethernet). Use this option to enable or disable Cloud Remote connection through an Ethernet connection.
- Cloud Remote Connect (Cellular). Use this option to enable or disable Cloud Remote connection through a cellular connection.

Cloud connection not supported on upgrade

Current B465 modules with firmware version 1.00.005 that are upgraded to firmware version 2.00 do not connect to the cloud. Only factory produced modules with valid cloud certificates are able to connect using the cloud.

9.1.3 Updated Account Setup options

The B465 can optionally replace the account number in all received phone events from either phone line with the account number configured in Alternate Account Number. Refer to the descriptions below for new Account Setup prompts:

- Substitute Account Number. Use this option to enable or disable the feature.
- Alternate Account Number. Use this option to set up an alternate account number.

9.1.4 B444 support

This firmware update supports the . The use of this module is for the US market only.

9.1.5 Remote Programming Support

RPS Settings. Use this option for remote module configuration when using Remote Programming Software (RPS). The B465 v2.00 supports remote configuration through RPS using USB, Ethernet, and Cellular IP connections. Make sure you use RPS v6.05 or greater.

9.1.6 Override for Answer RPS over Network

When **RPS Settings >> Answer RPS over Network** is set to **Disabled**, RPS cannot establish a remote connection to the B465 over Ethernet or over Cellular IP. Local RPS connection through USB is not affected by this feature. A disabled remote RPS connection can be briefly overridden by opening and closing the on-board tamper input for more than 5 seconds and less than 2 minutes. The override will allow a remote connection from RPS for up to 2 minutes. The override is indicated on the B465 by activating the System Trouble LED.

9.1.7 Local programming support on upgrade

You must update the USB driver (RB_B465.INF v1.3.1000.0) when updating the B465 firmware version from v1.00.005 to v2.00.011 or higher.

The current USB driver is replaced by RBUS1CP.INF v1.2.9500 or newer.

The driver replacement is automatically performed when Remote Programming Software (RPS) v6.05 is installed or done manually. For more information on installing the driver manually, refer to the *Conettix Universal Dual Path Communicator Installation and Operation Manual - USB and TeraTerm* section.

9.1.8 Periodic Test Report

The B465 can send an optional test report containing a general system normal or off-normal status.

9.1.9 Operational improvements

This firmware release contains operational improvements related to the B444 plug-in cellular module.

9.2 Known issues

This section examines the known issues of this firmware version.

9.2.1 Modem IIIa2 and GV3 and GV4 control panels

The digital dialer format Modem IIIa² is not supported on the following control panels:

- D9412GV4/D7412GV4
- D9412GV3/D7412GV3
- D7212GV4/D7212GV3

9.2.2 Event transmissions

The sending of multiple, consecutive, identical events transmit once.

9.2.3 Fast receiver supervision times

Using a fast or high supervision time rate might result in momentary communication troubles from the B465.

9.2.4 Periodic Test Report Configuration

In B465 modules that have firmware version v2.00.002 and greater, the Test Report Interval option can only be configured from the USB Terminal menu. Configuring remotely through RPS is not available in version 6.05. RPS may show an unknown parameter change when the Test Report Interval is not at its default setting of **disabled**.

9.2.5 B444 signal strength

The signal strength LED indicators on the module may vary under normal conditions and should be used as a general guideline regarding signal strength and performance. This is due to various factors including:

- Switching frequency bands
- Switching cell towers
- Environmental conditions
- LTE technology factors such as:
 - Modulation scheme
 - Multipath effects
 - Interference

9.3 Firmware version 2.01

What's new

- *Incoming RPS connections, page 12*
- *B444 signal strength indication, page 12*
- *B465 cloud default parameters changed, page 12*
- *APN usage for B442 and B443, page 12*

What's fixed

- *Stabilization of cell card performance, page 12*

9.3.1 What's new

This section examines the new features of this firmware version.

9.3.1.1 Incoming RPS connections

In addition to answering incoming calls from RPS using UDP (User Datagram Protocol), incoming calls from RPS using TCP (Transfer Control Protocol) are also supported. RPS version 6.07 is required for this modified connection method.

9.3.1.2 B444 signal strength indication

The B444 signal strength LED indication has been modified to more accurately represent performance. While LTE tower switching may still occur, their individual signal strength indications are more accurate.

9.3.1.3 B465 cloud default parameters changed

Cloud connections using Ethernet and/or cellular are now enabled as the default selection to allow for establishing communications.

9.3.1.4 APN usage for B442 and B443

The B442 and B443 plug-in cellular modules shall attempt connections using APNs in the following order:

1. Primary configured APN
2. gne
3. wyles.apn
4. wyles.com.attz

The plug-in cellular module will select and use the most appropriate APN.

If the APN is erroneous, the panel keypads may not display the details of this trouble condition.

9.3.2

What's fixed

This section examines the fixed issues of this firmware version.

9.3.2.1

Stabilization of cell card performance

Cell card stability enhancements are included within this firmware release.

10 Firmware version 1.00.005

Notable features

- Updated B440/B441 support
- *Reporting Delay for Low Signal Strength default change, page 17*
- *No Towers Reporting Delay default, page 17*

Corrections

- *Cellular reliability, page 17*
- *Signal strength, page 17*

10.1 Notable features

This section examines the new features of this firmware version.

10.1.1 Updated B440/B441 support

B465 firmware v1.00.005 supports the latest versions of the B440 and B441 plug-in cellular modules (B440 v15.00.026 and B441 v18.02.022). The latest B440/B441 firmware includes updated libraries to maintain Verizon certification, and a correction to show the correct MEID on keypads in the Installer menu.

To use a B440 v15.00.026 or a B441 v18.02.022, the connected B465 must have firmware v1.00.005 or higher.

10.1.2 Reporting Delay for Low Signal Strength default change

The Reporting Delay for Low Signal Strength parameter default value was changed to a state of disabled. The original default value was 1800 seconds. The new default value is zero. When this value is set to zero seconds, this parameter is considered disabled.

10.1.3 No Towers Reporting Delay default

The Reporting Delay for No Towers parameter default value was changed to a state of being disabled. The original default value was 1800 seconds. The new default value is zero. When this value is set to zero seconds, this parameter is considered to be disabled.

10.2 Corrections

This section examines the corrections made in this firmware version.

10.2.1 Cellular reliability

Improved cellular reliability in unstable environments and in situations where other network errors might occur.

10.2.2 Signal strength

Improved cellular signal strength levels by changing the firmware to increase the acceptable levels detected.

11 Open source software

Bosch includes the open source software licenses listed below in the firmware for this device. The inclusion of these modules does not limit the Bosch warranty.

License: BSD-3 Clause

Copyright (c). All rights reserved.

Redistribution and use in source and binary forms, with or without modification, are permitted provided that the following conditions are met:

1. Redistributions of source code must retain the above copyright notice, this list of conditions and the following disclaimer.
2. Redistributions in binary form must reproduce the above copyright notice, this list of conditions and the following disclaimer in the documentation and/or other materials provided with the distribution.
3. Neither the name of the copyright holder nor the names of its contributors may be used to endorse or promote products derived from this software without specific prior written permission.

THIS SOFTWARE IS PROVIDED BY THE COPYRIGHT HOLDERS AND CONTRIBUTORS "AS IS" AND ANY EXPRESS OR IMPLIED WARRANTIES, INCLUDING, BUT NOT LIMITED TO, THE IMPLIED WARRANTIES OF MERCHANTABILITY AND FITNESS FOR A PARTICULAR PURPOSE ARE DISCLAIMED. IN NO EVENT SHALL THE COPYRIGHT HOLDER OR CONTRIBUTORS BE LIABLE FOR ANY DIRECT, INDIRECT, INCIDENTAL, SPECIAL, EXEMPLARY, OR CONSEQUENTIAL DAMAGES (INCLUDING, BUT NOT LIMITED TO, PROCUREMENT OF SUBSTITUTE GOODS OR SERVICES; LOSS OF USE, DATA, OR PROFITS; OR BUSINESS INTERRUPTION) HOWEVER CAUSED AND ON ANY THEORY OF LIABILITY, WHETHER IN CONTRACT, STRICT LIABILITY, OR TORT (INCLUDING NEGLIGENCE OR OTHERWISE) ARISING IN ANY WAY OUT OF THE USE OF THIS SOFTWARE, EVEN IF ADVISED OF THE POSSIBILITY OF SUCH DAMAGE.

License: ISC

ISC License Copyright (c) 2004-2010 by Internet Systems Consortium, Inc. ("ISC")

Copyright (c) 1995-2003 by Internet Software Consortium

Permission to use, copy, modify, and /or distribute this software for any purpose with or without fee is hereby granted, provided that the above copyright notice and this permission notice appear in all copies.

THE SOFTWARE IS PROVIDED "AS IS" AND ISC DISCLAIMS ALL WARRANTIES WITH REGARD TO THIS SOFTWARE INCLUDING ALL IMPLIED WARRANTIES OF MERCHANTABILITY AND FITNESS. IN NO EVENT SHALL ISC BE LIABLE FOR ANY SPECIAL, DIRECT, INDIRECT, OR CONSEQUENTIAL DAMAGES OR ANY DAMAGES WHATSOEVER RESULTING FROM LOSS OF USE, DATA OR PROFITS, WHETHER IN AN ACTION OF CONTRACT, NEGLIGENCE OR OTHER TORTIOUS ACTION, ARISING OUT OF OR IN CONNECTION WITH THE USE OR PERFORMANCE OF THIS SOFTWARE.

License: MIT

MIT License Copyright (c)

Permission is hereby granted, free of charge, to any person obtaining a copy of this software and associated documentation files (the "Software"), to deal in the Software without restriction, including without limitation the rights to use, copy, modify, merge, publish, distribute, sublicense, and/or sell copies of the Software, and to permit persons to whom the Software is furnished to do so, subject to the following conditions:

The above copyright notice and this permission notice (including the next paragraph) shall be included in all copies or substantial portions of the Software.

THE SOFTWARE IS PROVIDED "AS IS", WITHOUT WARRANTY OF ANY KIND, EXPRESS OR IMPLIED, INCLUDING BUT NOT LIMITED TO THE WARRANTIES OF MERCHANTABILITY, FITNESS FOR A PARTICULAR PURPOSE AND NONINFRINGEMENT. IN NO EVENT SHALL THE AUTHORS OR COPYRIGHT HOLDERS BE LIABLE FOR ANY CLAIM, DAMAGES OR OTHER LIABILITY, WHETHER IN AN ACTION OF CONTRACT, TORT OR OTHERWISE, ARISING FROM, OUT OF OR IN CONNECTION WITH THE SOFTWARE OR THE USE OR OTHER DEALINGS IN THE SOFTWARE.

License: Apache-2.0

Version 2.0, January 2004

<http://www.apache.org/licenses/> TERMS AND CONDITIONS FOR USE, REPRODUCTION, AND DISTRIBUTION

1. Definitions.

"License" shall mean the terms and conditions for use, reproduction, and distribution as defined by Sections 1 through 9 of this document.

"Licensor" shall mean the copyright owner or entity authorized by the copyright owner that is granting the License.

"Legal Entity" shall mean the union of the acting entity and all other entities that control, are controlled by, or are under common control with that entity. For the purposes of this definition, "control" means (i) the power, direct or indirect, to cause the direction or management of such entity, whether by contract or otherwise, or (ii) ownership of fifty percent (50%) or more of the outstanding shares, or (iii) beneficial ownership of such entity.

"You" (or "Your") shall mean an individual or Legal Entity exercising permissions granted by this License.

"Source" form shall mean the preferred form for making modifications, including but not limited to software source code, documentation source, and configuration files.

"Object" form shall mean any form resulting from mechanical transformation or translation of a Source form, including but not limited to compiled object code, generated documentation, and conversions to other media types.

"Work" shall mean the work of authorship, whether in Source or Object form, made available under the License, as indicated by a copyright notice that is included in or attached to the work (an example is provided in the Appendix below).

"Derivative Works" shall mean any work, whether in Source or Object form, that is based on (or derived from) the Work and for which the editorial revisions, annotations, elaborations, or other modifications represent, as a whole, an original work of authorship. For the purposes of this License, Derivative Works shall not include works that remain separable from, or merely link (or bind by name) to the interfaces of, the Work and Derivative Works thereof.

"Contribution" shall mean any work of authorship, including the original version of the Work and any modifications or additions to that Work or Derivative Works thereof, that is intentionally submitted to Licensor for inclusion in the Work by the copyright owner or by an individual or Legal Entity authorized to submit on behalf of the copyright owner. For the purposes of this definition, "submitted" means any form of electronic, verbal, or written communication sent to the Licensor or its representatives, including but not limited to communication on electronic mailing lists, source code control systems, and issue tracking systems that are managed by, or on behalf of, the Licensor for the purpose of discussing and improving the Work, but excluding communication that is conspicuously marked or otherwise designated in writing by the copyright owner as "Not a Contribution."

"Contributor" shall mean Licensor and any individual or Legal Entity on behalf of whom a Contribution has been received by Licensor and subsequently incorporated within the Work.

2. Grant of Copyright License. Subject to the terms and conditions of this License, each Contributor hereby grants to You a perpetual, worldwide, non-exclusive, no-charge, royalty-free, irrevocable copyright license to reproduce, prepare Derivative Works of, publicly display, publicly perform, sublicense, and distribute the Work and such Derivative Works in Source or Object form.

3. Grant of Patent License. Subject to the terms and conditions of this License, each Contributor hereby grants to You a perpetual, worldwide, non-exclusive, no-charge, royalty-free, irrevocable (except as stated in this section) patent license to make, have made, use, offer to sell, sell, import, and otherwise transfer the Work, where such license applies only to those patent claims licensable by such Contributor that are necessarily infringed by their Contribution(s) alone or by combination of their Contribution(s) with the Work to which such Contribution(s) was submitted. If You institute patent litigation against any entity (including a cross-claim or counterclaim in a lawsuit) alleging that the Work or a Contribution incorporated within the Work constitutes direct or contributory patent infringement, then any patent licenses granted to You under this License for that Work shall terminate as of the date such litigation is filed.

4. Redistribution. You may reproduce and distribute copies of the Work or Derivative Works thereof in any medium, with or without modifications, and in Source or Object form, provided that You meet the following conditions:

(a) You must give any other recipients of the Work or Derivative Works a copy of this License; and

(b) You must cause any modified files to carry prominent notices stating that You changed the files; and

(c) You must retain, in the Source form of any Derivative Works that You distribute, all copyright, patent, trademark, and attribution notices from the Source form of the Work, excluding those notices that do not pertain to any part of the Derivative Works; and

(d) If the Work includes a "NOTICE" text file as part of its distribution, then any Derivative Works that You distribute must include a readable copy of the attribution notices contained within such NOTICE file, excluding those notices that do not pertain to any part of the Derivative Works, in at least one of the following places: within a NOTICE text file distributed as part of the Derivative Works; within the Source form or documentation, if provided along with the Derivative Works; or, within a display generated by the Derivative Works, if and wherever such third-party notices normally appear. The contents of the NOTICE file are for informational purposes only and do not modify the License. You may add Your own attribution notices within Derivative Works that You distribute, alongside or as an addendum to the NOTICE text from the Work, provided that such additional attribution notices cannot be construed as modifying the License.

You may add Your own copyright statement to Your modifications and may provide additional or different license terms and conditions for use, reproduction, or distribution of Your modifications, or for any such Derivative Works as a whole, provided Your use, reproduction, and distribution of the Work otherwise complies with the conditions stated in this License.

5. Submission of Contributions. Unless You explicitly state otherwise, any Contribution intentionally submitted for inclusion in the Work by You to the Licensor shall be under the terms and conditions of this License, without any additional terms or conditions.

Notwithstanding the above, nothing herein shall supersede or modify the terms of any separate license agreement you may have executed with Licensor regarding such Contributions.

6. Trademarks. This License does not grant permission to use the trade names, trademarks, service marks, or product names of the Licensor, except as required for reasonable and customary use in describing the origin of the Work and reproducing the content of the NOTICE file.

7. Disclaimer of Warranty. Unless required by applicable law or agreed to in writing, Licensor provides the Work (and each Contributor provides its Contributions) on an "AS IS" BASIS, WITHOUT WARRANTIES OR CONDITIONS OF ANY KIND, either express or implied, including, without limitation, any warranties or conditions of TITLE, NON-INFRINGEMENT, MERCHANTABILITY, or FITNESS FOR A PARTICULAR PURPOSE. You are solely responsible for determining the appropriateness of using or redistributing the Work and assume any risks associated with Your exercise of permissions under this License.

8. Limitation of Liability. In no event and under no legal theory, whether in tort (including negligence), contract, or otherwise, unless required by applicable law (such as deliberate and grossly negligent acts) or agreed to in writing, shall any Contributor be liable to You for damages, including any direct, indirect, special, incidental, or consequential damages of any character arising as a result of this License or out of the use or inability to use the Work (including but not limited to damages for loss of goodwill, work stoppage, computer failure or malfunction, or any and all other commercial damages or losses), even if such Contributor has been advised of the possibility of such damages.

9. Accepting Warranty or Additional Liability. While redistributing the Work or Derivative Works thereof, You may choose to offer, and charge a fee for, acceptance of support, warranty, indemnity, or other liability obligations and/or rights consistent with this License. However, in accepting such obligations, You may act only on Your own behalf and on Your sole responsibility, not on behalf of any other Contributor, and only if You agree to indemnify, defend, and hold each Contributor harmless for any liability incurred by, or claims asserted against, such Contributor by reason of your accepting any such warranty or additional liability. END OF TERMS AND CONDITIONS

APPENDIX: How to apply the Apache License to your work.

To apply the Apache License to your work, attach the following boilerplate notice, with the fields enclosed by brackets "[]" replaced with your own identifying information. (Don't include the brackets!) The text should be enclosed in the appropriate comment syntax for the file format. We also recommend that a file or class name and description of purpose be included on the same "printed page" as the copyright notice for easier identification within third-party archives.

Copyright [yyyy] [name of copyright owner]

Licensed under the Apache License, Version 2.0 (the "License"); you may not use this file except in compliance with the License.

You may obtain a copy of the License at <http://www.apache.org/licenses/LICENSE-2.0>

Unless required by applicable law or agreed to in writing, software distributed under the License is distributed on an "AS IS" BASIS, WITHOUT WARRANTIES OR CONDITIONS OF ANY KIND, either express or implied. See the License for the specific language governing permissions and limitations under the License.

License: Dual-OpenSSL-and-SSLeay-license, OpenSSL Combined License

The OpenSSL toolkit stays under a double license, i.e. both the conditions of the OpenSSL License and the original SSLeay license apply to the toolkit.

See below for the actual license texts.

OpenSSL License

Copyright (c) 1998-2019 The OpenSSL Project. All rights reserved.

Redistribution and use in source and binary forms, with or without modification, are permitted provided that the following conditions are met:

1. Redistributions of source code must retain the above copyright notice, this list of conditions and the following disclaimer.
2. Redistributions in binary form must reproduce the above copyright notice, this list of conditions and the following disclaimer in the documentation and/or other materials provided with the distribution.
3. All advertising materials mentioning features or use of this software must display the following acknowledgment: "This product includes software developed by the OpenSSL Project for use in the OpenSSL Toolkit. (<http://www.openssl.org/>)"
4. The names "OpenSSL Toolkit" and "OpenSSL Project" must not be used to endorse or promote products derived from this software without prior written permission. For written permission, please contact openssl-core@openssl.org.
5. Products derived from this software may not be called "OpenSSL" nor may "OpenSSL" appear in their names without prior written permission of the OpenSSL Project.
6. Redistributions of any form whatsoever must retain the following acknowledgment: "This product includes software developed by the OpenSSL Project for use in the OpenSSL Toolkit (<http://www.openssl.org/>)"

THIS SOFTWARE IS PROVIDED BY THE OpenSSL PROJECT ``AS IS'' AND ANY EXPRESSED OR IMPLIED WARRANTIES, INCLUDING, BUT NOT LIMITED TO, THE IMPLIED WARRANTIES OF MERCHANTABILITY AND FITNESS FOR A PARTICULAR PURPOSE ARE DISCLAIMED. IN NO EVENT SHALL THE OpenSSL PROJECT OR ITS CONTRIBUTORS BE LIABLE FOR ANY DIRECT, INDIRECT, INCIDENTAL, SPECIAL, EXEMPLARY, OR CONSEQUENTIAL DAMAGES (INCLUDING, BUT NOT LIMITED TO, PROCUREMENT OF SUBSTITUTE GOODS OR SERVICES; LOSS OF USE, DATA, OR PROFITS; OR BUSINESS INTERRUPTION) HOWEVER CAUSED AND ON ANY THEORY OF LIABILITY, WHETHER IN CONTRACT, STRICT LIABILITY, OR TORT (INCLUDING NEGLIGENCE OR OTHERWISE) ARISING IN ANY WAY OUT OF THE USE OF THIS SOFTWARE, EVEN IF ADVISED OF THE POSSIBILITY OF SUCH DAMAGE.

=====

This product includes cryptographic software written by Eric Young (eay@cryptsoft.com).

This product includes software written by Tim Hudson (tjh@cryptsoft.com).

Original SSLeay License

Copyright (C) 1995-1998 Eric Young (eay@cryptsoft.com)

All rights reserved.

This package is an SSL implementation written by Eric Young (eay@cryptsoft.com).

The implementation was written so as to conform with Netscapes SSL.

This library is free for commercial and non-commercial use as long as the following conditions are adhered to. The following conditions apply to all code found in this distribution, be it the RC4, RSA, lhash, DES, etc., code; not just the SSL code. The SSL documentation included with this distribution is covered by the same copyright terms except that the holder is Tim Hudson (tjh@cryptsoft.com).

Copyright remains Eric Young's, and as such any Copyright notices in the code are not to be removed.

If this package is used in a product, Eric Young should be given attribution as the author of the parts of the library used.

This can be in the form of a textual message at program startup or in documentation (online or textual) provided with the package.

Redistribution and use in source and binary forms, with or without modification, are permitted provided that the following conditions are met:

1. Redistributions of source code must retain the copyright notice, this list of conditions and the following disclaimer.
2. Redistributions in binary form must reproduce the above copyright notice, this list of conditions and the following disclaimer in the documentation and/or other materials provided with the distribution.
3. All advertising materials mentioning features or use of this software must display the following acknowledgement: "This product includes cryptographic software written by Eric Young (eay@cryptsoft.com)"

The word 'cryptographic' can be left out if the routines from the library being used are not cryptographic related :-).

4. If you include any Windows specific code (or a derivative thereof) from the apps directory (application code) you must include an acknowledgement: "This product includes software written by Tim Hudson (tjh@cryptsoft.com)"

THIS SOFTWARE IS PROVIDED BY ERIC YOUNG ``AS IS'' AND ANY EXPRESS OR IMPLIED WARRANTIES, INCLUDING, BUT NOT LIMITED TO, THE IMPLIED WARRANTIES OF MERCHANTABILITY AND FITNESS FOR A PARTICULAR PURPOSE ARE DISCLAIMED. IN NO EVENT SHALL THE AUTHOR OR CONTRIBUTORS BE LIABLE FOR ANY DIRECT, INDIRECT, INCIDENTAL, SPECIAL, EXEMPLARY, OR CONSEQUENTIAL DAMAGES (INCLUDING, BUT NOT LIMITED TO, PROCUREMENT OF SUBSTITUTE GOODS OR SERVICES; LOSS OF USE, DATA, OR PROFITS; OR BUSINESS INTERRUPTION) HOWEVER CAUSED AND ON ANY THEORY OF LIABILITY, WHETHER IN CONTRACT, STRICT LIABILITY, OR TORT (INCLUDING NEGLIGENCE OR OTHERWISE) ARISING IN ANY WAY OUT OF THE USE OF THIS SOFTWARE, EVEN IF ADVISED OF THE POSSIBILITY OF SUCH DAMAGE.

The licence and distribution terms for any publically available version or derivative of this code cannot be changed. i.e. this code cannot simply be copied and put under another distribution licence [including the GNU Public Licence.]

License: RSA-MD

Copyright (C) 1991-2, RSA Data Security, Inc. Created 1991. All rights reserved.

License to copy and use this software is granted provided that it is identified as the "RSA Data Security, Inc. MD5 Message-Digest Algorithm" in all material mentioning or referencing this software or this function.

License is also granted to make and use derivative works provided that such works are identified as "derived from the RSA Data Security, Inc. MD5 Message-Digest Algorithm" in all material mentioning or referencing the derived work.

RSA Data Security, Inc. makes no representations concerning either the merchantability of this software or the suitability of this software for any particular purpose. It is provided "as is" without express or implied warranty of any kind.

These notices must be retained in any copies of any part of this documentation and/or software.

Bosch Security Systems B.V.

Torenallee 49

5617 BA Eindhoven

Netherlands

www.boschsecurity.com

© Bosch Security Systems B.V., 2023

Building solutions for a better life.

202309261715