

CONETTIX B6800 Central Station Software Receiver

B6800-SR



Table of contents

1	Use latest software	4
2	System overview	5
3	System Components (installation)	6
4	Installation requirements for UL applications	7
4.1	UL 864 programming requirements	8
4.2	Commercial fire alarm installations	8
4.2.1	UL 864 programming recommendations	9
4.3	Required programming for hold-up alarms	9
4.4	Required programming for panic point type	9
4.5	Required values to achieve 200s UL supervision interval	9
5	Licensing	10
5.1	Activate a license	10
6	SMA and support	12
7	System hardware and software minimum requirements	13
8	Installation	14
8.1	Verify installation	24
8.2	Run System Manager	24
8.3	Run Monitor (Dashboard)	24
8.4	Modify setup	24
8.5	VM Performance on Hyper-V in Server 2019	25
9	Access the system	26
10	Sign in and change password	27
11	Uninstall	28
12	Maintenance	29
13	Decommissioning the software	30

1 Use latest software

Before operating the device for the first time, make sure that you install the latest applicable release of your software version. For consistent functionality, compatibility, performance, and security, regularly update the software throughout the operational life of the device. Follow the instructions in the product documentation regarding software updates.

The following links provide more information:

- General information: <https://www.boschsecurity.com/xc/en/support/product-security/>
- Security advisories, that is a list of identified vulnerabilities and proposed solutions: <https://www.boschsecurity.com/xc/en/support/product-security/security-advisories.html>

Bosch assumes no liability whatsoever for any damage caused by operating its products with outdated software components.

Note that for the CONETTIX B6800 Central Station Software Receiver, the latest applicable release refers to the software on the host machine, as there is no device for operation.

2 System overview

The CONETTIX B6800 Central Station Software Receiver (CONETTIX B6800-SR) is a software-based IP receiving platform. The system runs on commercial off the shelf (COTS) Windows servers or workstations. The CONETTIX B6800-SR replaces the Bosch D6600 and D6100IPV6 hardware receiver products for IP applications but retains the product functionality.



Notice!

Public Switched Telephone Network (PSTN)

The CONETTIX B6800 Central Station Software Receiver does not support PSTN.

Supported IP protocol:

- CONETTIX IP

Supported communication formats:

Product/Device	Supported control panel communication formats
B Series and G Series control panels	Modem 4 Contact ID
B465, dialer capture	Contact ID/SIA DC-05 SIA DC-03 Bosch Modem 2e, IIIa ² Pulse 3/1, 4/2

Supported automation formats:

- 6500 Mode
- SIA Mode

Supported input message formats:

- Modem 4
- Contact ID



Notice!

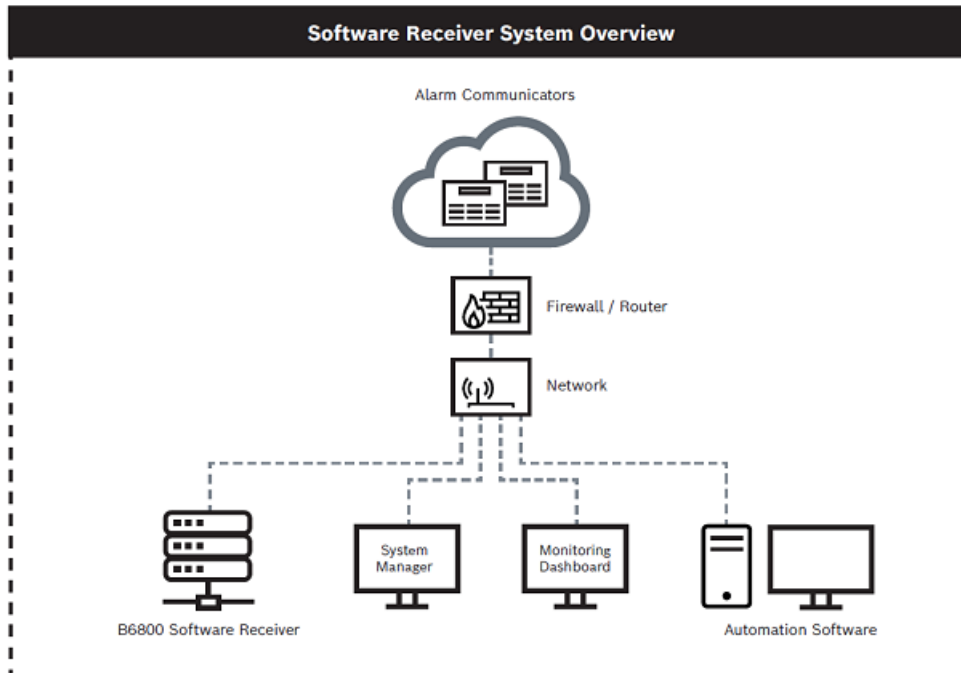
UL 864 and UL 2610 compliance

Suitable for use as a Fire and Security-Signaling Central Station Software Receiver.

3 System Components (installation)

The main components of the CONETTIX B6800 Central Station Software Receiver (CONETTIX B6800-SR) include:

- **B6800 Software Receiver:** virtual receiver(s) to process incoming and outgoing messages between panel accounts and automation.
- **System Manager (Manager):** central control center to add and configure receivers, panel accounts, operators, and output to automation.
- **Monitoring Dashboard (Monitor):** monitors a selected receiver in real-time. The Dashboard shows event traffic, system status, and notifications.



4 Installation requirements for UL applications

To comply with UL 864 and UL 2610, the system must follow the requirements listed in this section.

UPS

- The equipment for which the Central Station Receiver is installed shall be provided with an uninterruptible power supply (UPS) with sufficient capacity to operate the computer equipment for a minimum of 15 min. If more than 15 min is required for the secondary power supply to supply the UPS input power, the UPS shall be capable of providing input power for at least that amount of time.
- The UPS shall comply with the Standard for Uninterruptible Power Systems, UL 1778, or the Standard for Power Supplies for Fire-Protective Signaling Systems, UL 1481.
- For maintenance and repair service, a means for disconnecting the input to the UPS while maintaining continuity of power to the automation system (when applicable), shall be provided.
- The UPS shall be suitably rated for the equipment involved.

System power

- A power conditioner used with the system shall comply with the applicable requirements in the Standard for Power Units Other Than Class 2, UL 1012.
- The power source for the equipment shall be with the rated voltage range 100 - 240V AC.
- The equipment shall be protected by supply line transient protection complying with the Standard for Surge Protective Devices, UL 1449. The transient voltage surge suppressors for single-phase, 120/220 V AC systems shall have a marked rating of 330 V or less. The transient voltage surge suppressors for 3-phase, 480 V AC or higher-rated systems shall have a marked rating of 400 V or less.

Communication

- All ports of the signal processing equipment that are connected to communication circuits contained within the central-station building and not connected to the telecommunications network shall be protected by isolated loop circuit protectors for communication circuits. These protectors shall comply with the requirements in the Standard for Protectors for Data Communication and Fire Alarm Circuits, UL 497B. The transient protectors shall have a marked rating of 50V or less.
- Communication circuits and network components connected to the telecommunications network shall be protected by secondary protectors for communication circuits. These protectors shall comply with the Standard for Secondary Protectors for Communications Circuits, UL 497A. These protectors shall be used only in the protected side of the telecommunications network. The transient protectors shall have a marked rating of 150 V or less

Installation environment

- The installation of all equipment used at the central station shall be in compliance with the Standard for Central-Station Alarm Services, UL 827.
- Equipment shall be installed in a temperature controlled environment. A temperature-controlled environment is defined as one that can be maintained between 13 - 35° C (55 - 95° F) by the HVAC system. Twenty-four hour of standby power shall be provided for the HVAC system. The standby power system for the HVAC system may be supplied by an engine driven generator alone. A standby battery is not required to be used. A maintenance contract that provides for restoring operation of the HVAC system within 24 hr, 7 days a week shall be in place.

- The installation instructions shall specify that supervising station processing control equipment or the enclosure housing the control equipment be provided with a permanent means for connection to the branch-circuit supply which shall include provision for installing the supply conductors in conduit.
- No other software other than the operating system software and anti-virus/security protection software shall be installed on the primary and backup B6800 virtual machines (VM).

Notice!

NOTICE TO USERS, INSTALLERS, AUTHORITIES HAVING JURISDICTION, AND OTHER INVOLVED PARTIES



This product incorporates field-programmable software. In order for the product to comply with the requirements in the Standard for Control Units and Accessories for Fire Alarm Systems, UL 864, certain programming features or options must be limited to specific values or not used at all as indicated below:

Program feature or option Permitted in UL 864? (Y/N) Possible settings Settings permitted in UL 864

4.1 UL 864 programming requirements

For IP Communications to a B6800-SR Receiver			
Enhanced Comm	Yes	Yes / No	Set to Yes
Path # Network Address	Yes	IPV4 address or hostname	Program a valid IPV4 address or hostname
Path # Receiver Supervision Time**	Yes	200s, 300s, 1hr	Select the Receiver Supervision Time required by your AHJ (200 seconds or 300 seconds)
Path # Poll Rate	Yes	0, 5 to 65535 seconds*	Program as necessary
Path # Ack Wait	Yes	5 to 65535 seconds	Program as necessary
Path # Retry Count	Yes	1 to 255	Program as necessary
* Set the Path 1 Poll Rate to 65535 for 24 hr.			

4.2 Commercial fire alarm installations

Use the following parameters for commercial fire alarm installations. Check with your local Authority Having Jurisdiction.

4.2.1 UL 864 programming recommendations



Notice!

UL 864 Commercial Fire Systems requirement
 UL 864 10th edition certificated G Series systems cannot be used with any of the following third-party interconnections: access control systems, end-user mobile apps, building integrations software, or Public Address systems.

4.3 Required programming for hold-up alarms

When using the system for hold-up operation, a hold-up point should be assigned to a point as follows:

- P## Point Type set to 24-hr, P## Point Response set to 0 (Point is constantly armed regardless of the status of the system.)
- P## Invisible Point set to Yes (Keypads do not display alarm activity from this point.)

When using the Conettix Modem4 format, the unique point text should be set to "Hold-Up", or equivalent language per the AHJ.

When using the Conettix ANSI-SIA Contact ID format, because the Contact ID system doesn't provide custom text, the hold-up point should be associated as a "hold-up" point at the receiving station. Set Area # Delay Restorals as follows:

- Area # Delay Restorals = No (Restoral report is sent when point restores.)

4.4 Required programming for panic point type

When using the system for a panic operation, a panic point should be assigned as follows:

- P## Point Type set to 24-hr, P## Point Response set to 0 (Point is constantly armed regardless of the status of the system.)
- P## Invisible Point set to Yes (Keypads do not display alarm activity from this point.)

When using the Conettix Modem4 format, the unique point text should be set to "PANIC", or equivalent language per the AHJ.

When using the Conettix ANSI-SIA Contact ID format, because the Contact ID system does not provide custom text, the panic point should be associated as a "panic" point at the receiving station.

- Silent Bell set to Yes.
- Area# Delay Restorals set to No (Restoral report is sent when point restores.)

4.5 Required values to achieve 200s UL supervision interval

Applicable for both IP and cellular communication.

Requirement	Parameter
Supervision interval for IP and Cellular communication is 200 seconds (UL)	Panel Wide Parameters > Enhanced Communications > Receiver Supervision Time set to 200 seconds

5 Licensing

To use the CONETTIX B6800 Central Station Software Receiver, you must obtain and activate a license for the system.

Licensing options:

- **Demo License:** a free 30-day 10 Account license, which can be renewed up to 2 times for a maximum of 90 days, can be obtained from the Bosch Remote Portal.
- **Full License:** a full license can be purchased with a variable number of accounts.

Each of these licenses are activated in the Bosch Remote Portal. If you are going to use a Full License, place the order and wait to receive the Software Order ID before proceeding to activate it.

5.1 Activate a license

Overview

For either a Demo License or Full License, access the [Bosch Remote Portal](#) to download the appropriate CONETTIX B6800-SR license. Make sure that you have a login set up for the portal.

Once logged into the Bosch Remote Portal, you will be able to retrieve a Demo License or Full License that was purchased.

Access Licensing

To obtain the System Info File required for licensing:

1. After installing the CONETTIX B6800-SR, open the System Manager page and log in to your administrator (ADMIN) user account.
2. Select **Licensing** from the System Manager menu to access the Licensing page.
3. In Step 1 Retrieve SysInfo File, select **Download** to generate and download the System Info File for your system.

Obtain a Demo license

To obtain a Demo License:

1. In the Bosch Services Portal go to **Software Licensing > Free Demos tile > Activate Demo License** by clicking on the key icon.
2. Upload the SysInfo file (System Info File) and fill-in the required information and click **Activate**.
3. Download the license file after the activation is complete. Proceed to **Import License** to import the license into the B6800 system.

Obtain a Full license

To obtain a Full License:

1. In the portal go to **Software Licensing > Software activation tile > Click on Claim Software Order** next to Step 1
2. Enter a name for the license and enter the Software Order ID that Bosch emailed to you. Click **Next** and follow the prompts to Activate the license with the purchased options.
3. Download the license file after the activation is complete. Proceed to **Import License** to import the license into the B6800 system.

Import License

To import a license into your system:

1. In the B6800 Licensing page in Step 2 Redeem License, select **Browse** to locate and select the activated license that you obtained from the Bosch Remote Portal. You will use this file to upload the license into the B6800.

2. Select **Redeem** to upload the activated license. After successful upload, the license is activated. A current information summary of the CONETTIX B6800-SR licenses shows on the page. The license subscription information on the page is updated and will reflect the new license status.

Note: It might take several minutes for the license to be imported. Refresh the page if the license does not show automatically.

6 SMA and support

Protect your operation with a Software Maintenance Agreement (SMA). The SMA provides access to Bosch trained technical support team, all software updates, including new features and performance improvements, bug fixes, and security patches.

The B6800-SR software annual renewal entitles the customer to all software upgrades and technical support. The pricing is based on the total number of licensed accounts.

The SMA includes:

- phone support
- email support
- knowledge base access
- software releases: new features and bug fixes

7 System hardware and software minimum requirements

Microsoft Windows system for the Host system

Software

- Windows 10 Professional version 22H2 or higher
- Windows Server 2019 or Server 2022

Processor

- Intel Core I7 10th generation or higher

RAM

- 16 GB DRAM compatible with motherboard

Storage

- 500 GB SSD hard drive for UL 864 with 100GB free for the B6800 installation

Hardware

- Keyboard and mouse with access to the Host system, either directly or remotely as needed.

Network connectivity

- Ethernet port: 1000 Mbps capable



Notice!

NIC support

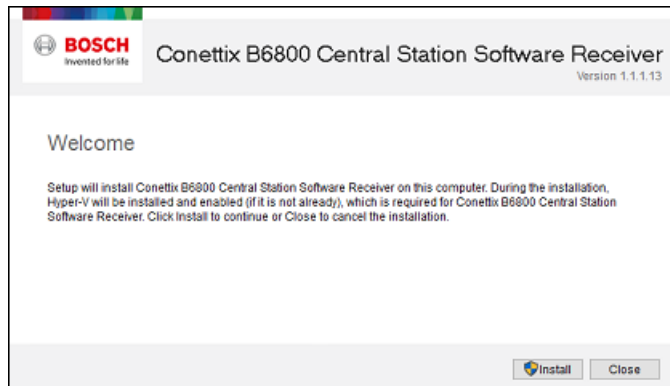
The CONETTIX B6800-SR only supports 1 Ethernet NIC (Network Interface Card).

8 Installation

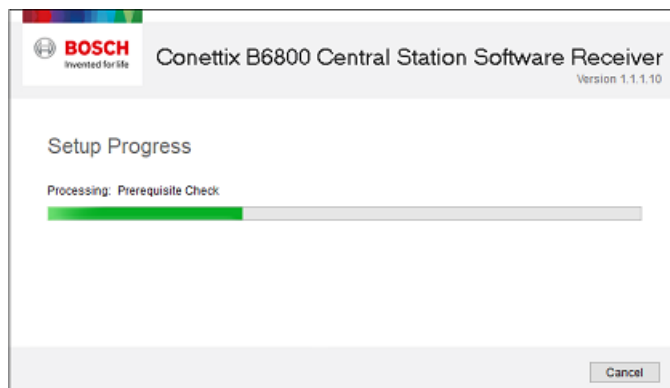
When you are ready to install, download the CONETTIX B6800-SR Zip file software package (.zip) from the Bosch product catalog website. Extract the files from the Zip file on the computer where you want to install the B6800.

To install the B6800 software:

1. Locate the B6800 Installer.exe file.
2. Right-click and select **Run as Admin** on the B6800 Installer.exe file. The installation wizard starts.

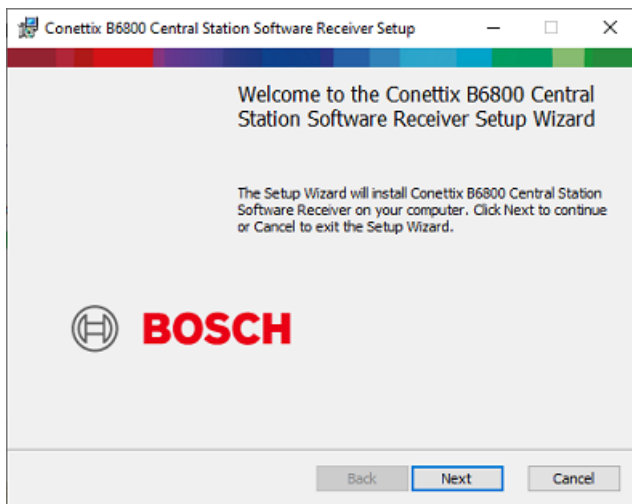


3. On the **Welcome** screen, click **Install** to begin the installation. A check of the system prerequisites starts.



4. The CONETTIX B6800 Central Station Software Receiver consists of a Virtual Machine (VM) that provides the B6800 system. Hyper-V software used for the VM must be enabled on the host:

- If Hyper-V is not enabled on the host prior to installation, the installation wizard will automatically configure the required Hyper-V components. When the Setup Progress screen shows, the Hyper-V configuration will require a restart to finish. Click **Restart**.
- If Hyper-V is enabled on the host, the restart step is skipped and the installation starts.

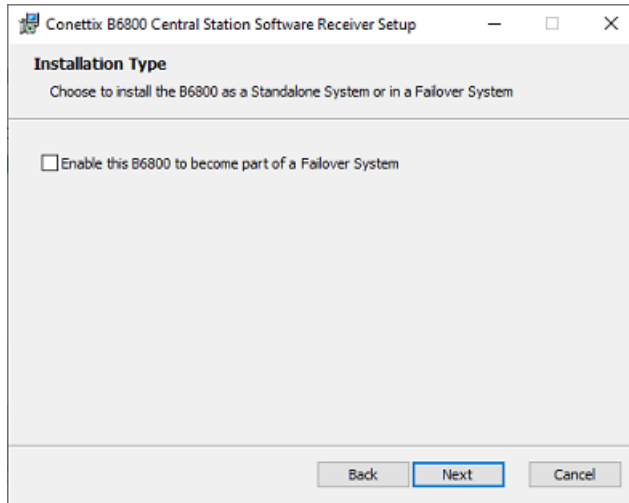


5. Click **Next**.



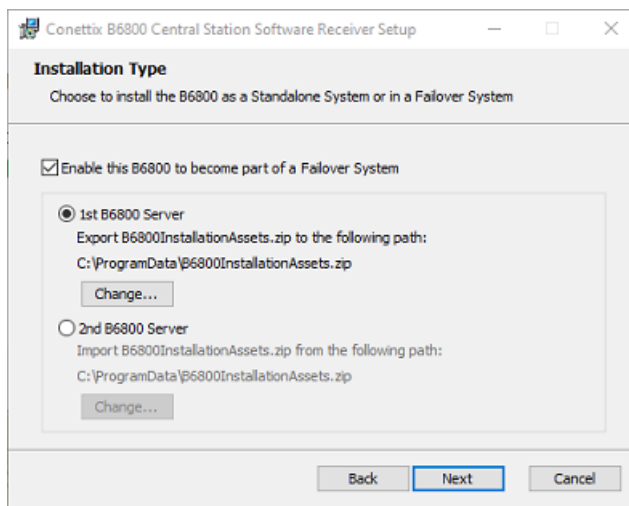
6. Review the **End-User License Agreement** and select the checkbox to accept the terms.

7. Click **Next** when finished.

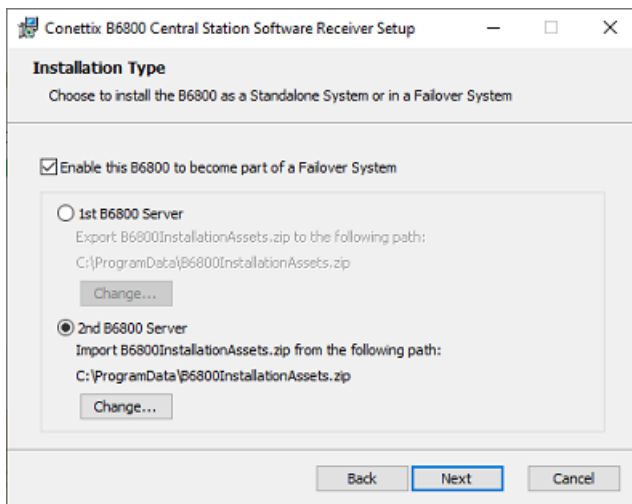


8. On the **Installation Type** screen, select 1 of the options:

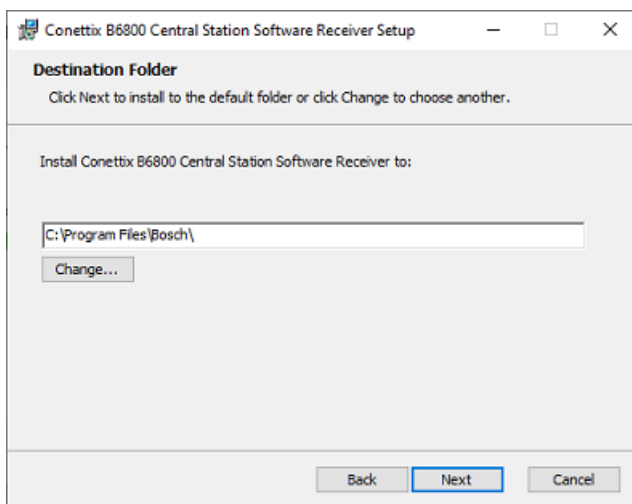
- For a standalone system, leave the checkbox unselected. Click **Next** to go to the Destination Folder path step 12, *page 17*
- For a B6800 Failover System component, select the checkbox to show more options on the screen.



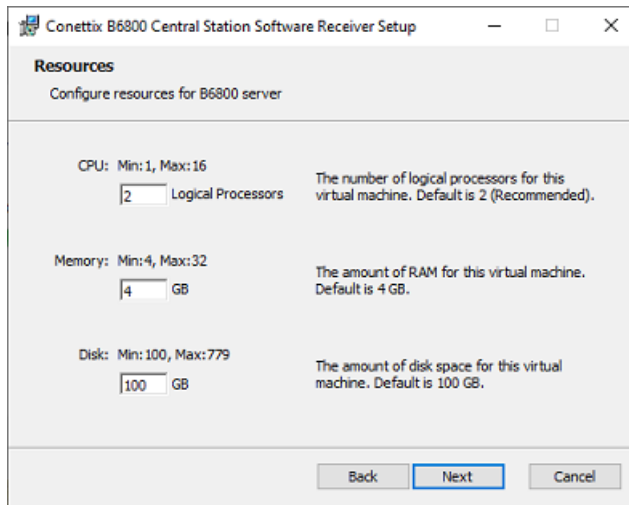
9. Select **1st B6800 Server** to select the Windows Program Data folder as the destination path for the B6800 installation assets file export.



- 10. Select **2nd B6800 Server** to select the Windows Program Data folder as the destination path for the B6800 installation assets file import.
- 11. Click **Next** when finished.



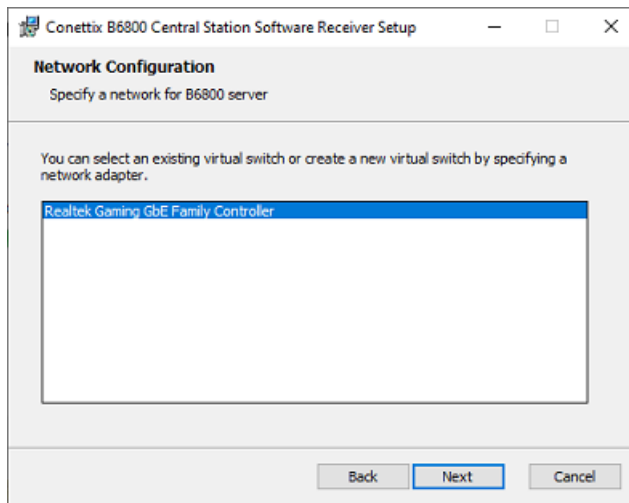
- 12. On the **Destination Folder** screen, accept the default folder path for the installation or click **Change** and enter a different folder.
- 13. Click **Next** when finished.



14. On the **Resources** screen, accept the default resources or manually set the CPU, Memory and Disk Space resources for your B6800 system:

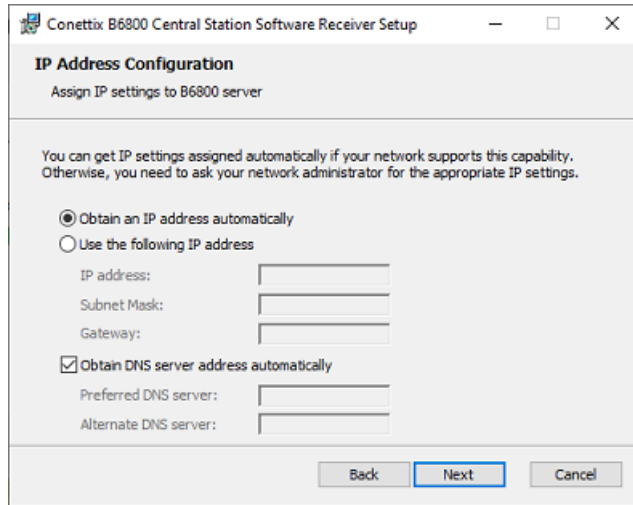
- **CPU:** Default: 2 Logical Processors
- **Memory:** Default: 4 GB
- **Disk:** Default: 100 GB

15. Click **Next** when finished.



16. On the **Network Configuration** screen, select the network device to use.

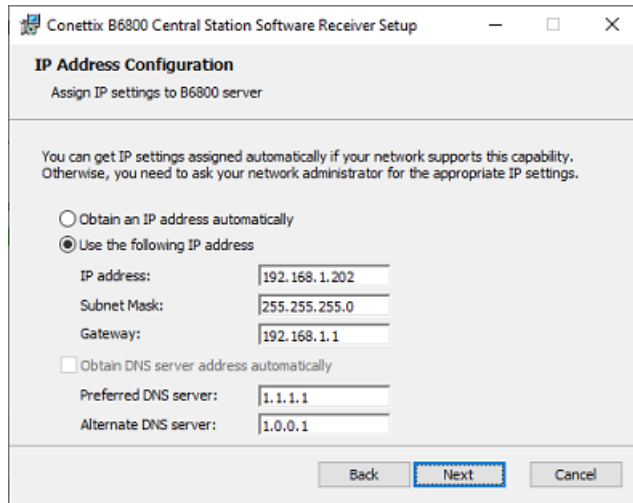
17. Click **Next** when finished.



18. On the **IP Address Configuration** screen, select **Obtain an IP address automatically** to automatically assign the IP address and DNS Server (if available for your network) or select **Use the following IP address** and manually enter:

- **IP address**
- **Subnet Mask**
- **Gateway**

For example:



19. Click **Next** when finished.

20. On the **Port Configuration** screen, configure the ports for Receiver 1 and Receiver 2 (if Receiver 2 will be used):

- **Panel Listener Port:** port number monitored for incoming events. Defaults: 7700 (Receiver 1), 7710 (Receiver 2)
- **Automation Listener Port:** port number monitored for software receiver events. Defaults: 7800 (Receiver 1), 7810 (Receiver 2)

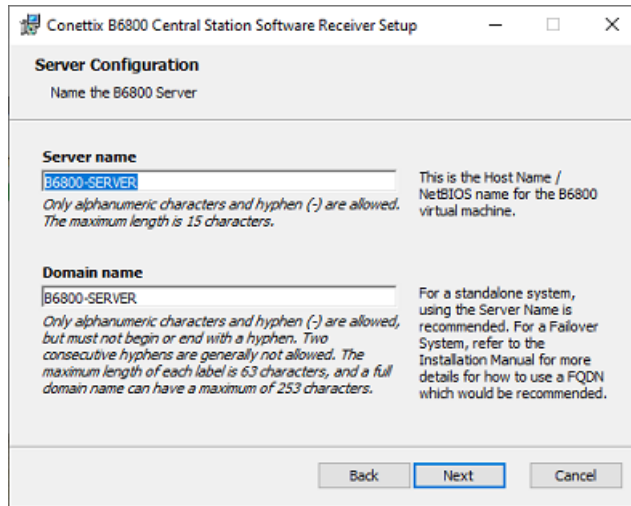
21. Click **Next** when finished.

22. On the **Time Server Configuration** screen, configure your time server to synchronize time with the host or select a public time server from the drop-down list. Note that to use a public time server, the CONETTIX B6800-SR must have access to the Internet.

Note that the B6800-SR does not support the input command for Time Sync from the automation software as was done in the D6x00 hardware receivers. The B6800-SR uses NTP servers to set the time on the receiver system. The servers can be the public facing servers at ntp.org or a local NTP server on the network

23. Click **Next** when finished.

Note: If an error is returned after clicking Next, make sure to retry it before continuing, as it is attempting to reach a Time Server. Check the entry and try again.



24. On the **Server Configuration** screen, accept the default names or enter different names. If you enter different names, use the correct naming conventions, which are listed here:

Server name

The Host/NetBIOS name of the B6800 virtual machine.

- A maximum of 15 alphanumeric and - (hyphen) characters can be used for this name.

Domain name

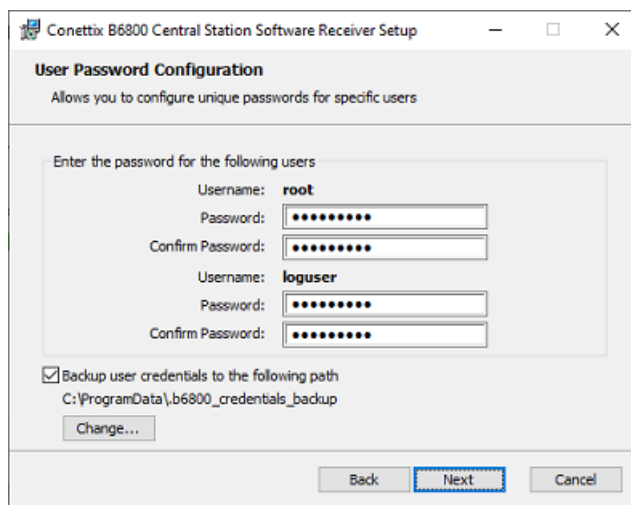
The name that users will enter when connecting to the B6800 system via a browser. This name can match the Server Name.

- A maximum of 256 alphanumeric and - (hyphen) characters can be used for this name.
- A hyphen is not allowed consecutively within the name
- A hyphen cannot be the first or last character of the name.
- The maximum label length is 63 characters.

For more information, see the video about the Domain name, which is available here in the Bosch YouTube playlist:

- [B6800-SR training](#)

25. Click **Next** when finished.



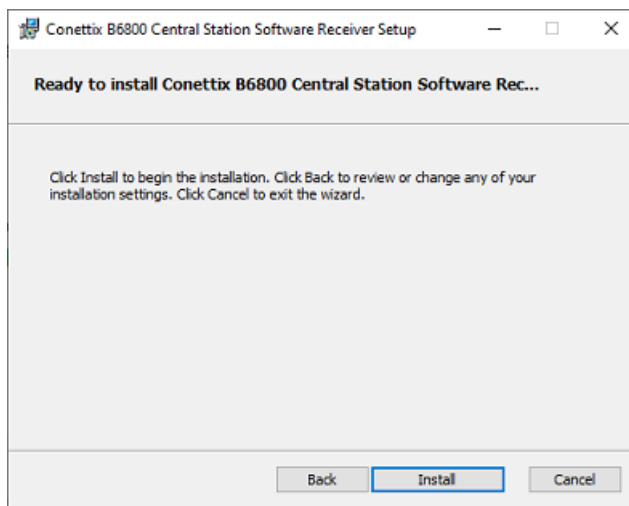
26. On the **User Password Configuration** screen, enter and confirm the passwords for:
- root
 - loguser access to the B6800 log files.
 - Select **Backup user credentials** to save the passwords to a file. Click **Change** to save the user credentials in a different location.

**Notice!**

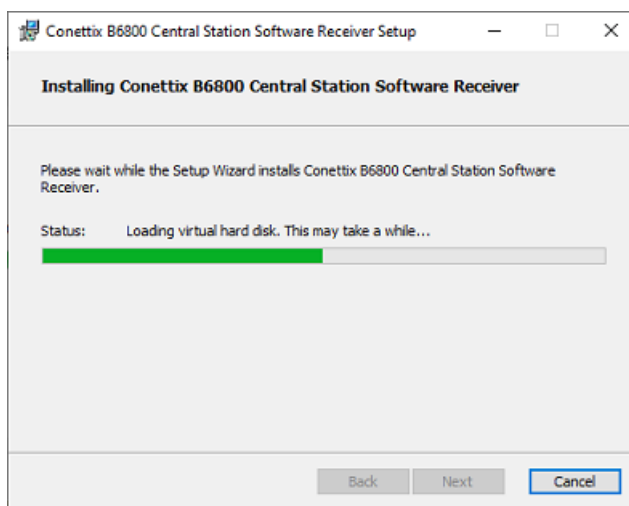
Backup user credentials in case of loss

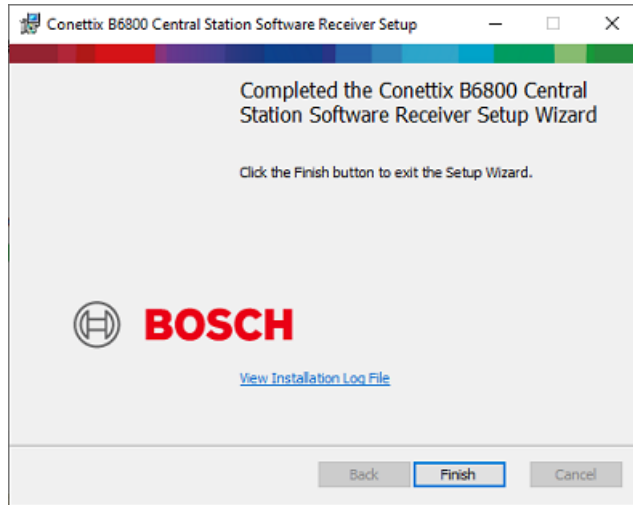
It is important that these credentials are backed up. The file will also contain credentials unique to your installation, which might be needed by support or for an update to your system. Save them to a secure location for future use.

27. Click **Next** when finished.



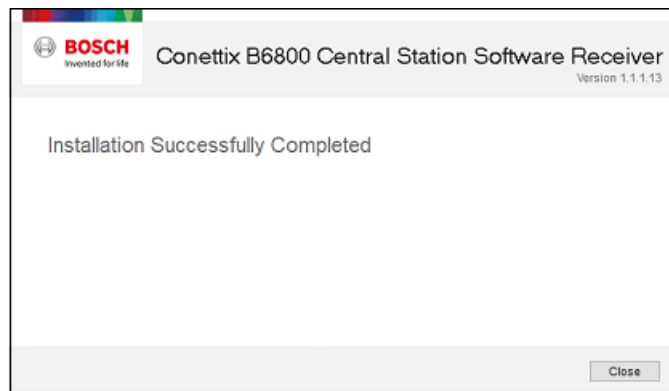
28. The B6800-SR software is now ready to install. Click **Install**.





29. On the completed installation screen, optionally click the link on the screen to view the log file.

30. Click **Finish** to close the completed installation screen.



31. Click **Close** to exit the installation wizard.

After successful installation of the CONETTIX B6800 Central Station Software Receiver, the defaults are:

- 2 receivers: Receiver 1 (enabled), Receiver 2 (disabled).
- 2 automation profiles: Automation Profile 1, Automation Profile 2
- 1 admin user

A B6800 system supports up to 2 receivers. A second receiver is optional and can be enabled if required. Note that the second receiver is not related to the second B6800 system for failover.



Notice!

Disable sleep or hibernate settings on host

Make sure that the host machine does not have Sleep or Hibernate settings enabled. If these settings are enabled, the system goes offline for panel accounts and no longer receives events.

8.1 Verify installation

After the installation finishes successfully, you can check that the B6800 is ready for use. It will take a few minutes before the system is completely ready for use the first time. Some further processing and connections are pending by the installation program.

To check the status of the B6800 application:

1. Open Hyper-V Manager on the host from the Windows Start menu.
2. Double-click the B6800 to open in the console.
3. When the **Server Name:** prompt shows, the application is ready to use. The Server Name will be the name that was entered during the installation.

8.2 Run System Manager

To access the B6800 System Manager for the first time:

1. On the host, access the Windows Start menu.
2. Open the Bosch folder.
3. Open and run the B6800 System Manager application.
4. On the sign in screen, enter:
 - admin (Username field): not case sensitive.
 - Bosch123! (Password field): default password.
5. Click **Sign In**.
6. On the first sign in, you must change the default password. Enter a new password.
7. Re-enter the new password to confirm.
8. Select **Submit**.

The admin password is changed and is active for the next log in.

Training videos

Videos that show an overview and demonstrate how to use the system are available here: [B6800-SR training](#)

8.3 Run Monitor (Dashboard)

To access the Dashboard for the first time:

1. On the host, access the Windows Start menu.
2. Locate the Bosch folder.
3. Locate and run the B6800 Monitor. Automation will not be operating or showing events yet, but the Dashboard should run if successfully installed. You can install and configure the Automation Simulator to make automation operational for testing or debugging.

8.4 Modify setup

After the installation, you can change the CONETTIX B6800-SR Host Address, Panel Listener Port (UDP) and Automation Listener Port (TCP/IP) parameters for Receiver 1 or Receiver 2. Use the B6800 Modify Setup application to modify the parameters.

To access the B6800 Modify Setup application:

1. From the Windows Start menu, locate the Bosch folder.
2. Locate and run the B6800 Modify Setup application.

8.5 VM Performance on Hyper-V in Server 2019

The performance of the VM in Server 2019 can be degraded depending upon a setting for the Hyper-V Scheduler settings for the OS.

For B6800 Failover you need to change the Scheduler to the Classic setting for best performance. You may also see a better performance for all other VMs that are running in Hyper-V.

To change the scheduler type to classic:

1. Open a command prompt with administrator privileges.
2. Enter `bcdedit /set hypervisorschedulertype classic`
3. Reboot the server for the changes to take effect.

Read about the details here:

[HyperV 2019 VMs 2x slower than HV 2012 host VMs - Virtualization - Spiceworks Community](#)
and more details here:

[Manage Hyper-V hypervisor scheduler types | Microsoft Learn](#)

9 Access the system

After installation is complete, access the CONETTIX B6800 Central Station Software Receiver.

To access System Manager:

1. Enter the **Domain Name** into the URL field of a browser window. For example, B6800-SERVER. The Domain name is configured during the installation.
2. Select **Enter**.

The sign in page shows in the browser.

To access the Dashboard:

1. Enter the **IP address or server name/monitor** into the URL field of a browser window. For example, b6800-server-1/monitor. The server name is configured during the installation.
2. Select **Enter**.

The Dashboard page shows in the browser.

Training videos

Videos that show an overview and demonstrate how to use the system are available here: [B6800-SR training](#)

10 Sign in and change password

An administrator default username and password is provided for the CONETTIX B6800-SR at installation:

- admin (username)
- Bosch123! (password)

You must change the default password at first log in.

To change the password when logging in for the first time:

1. On the sign in screen, enter:
 - admin (Username field): not case sensitive.
 - Bosch123! (Password field): default password.
2. Click **Sign In**.
3. On the first sign in, you must change the default password. Enter a new password.
4. Re-enter the new password to confirm.
5. Select **Submit**.

The admin password is changed and is active for the next log in.

After logging in to the system the first time, operators can change their own password.

To change your operator password:

1. At the top right of the page, select your user name.
2. Select **Change Password**.
3. Enter the new password.
4. Re-enter the password to confirm.
5. Select **Submit**.

The password is changed and is active for your next log in.

Password requirements

Operator passwords must be 8-64 characters long. For security, stronger passwords will contain more mixed character combinations, making the password more difficult to decipher.

The password must contain at least:

- 1 lowercase character
- 1 uppercase character
- 1 digit
- 1 special character

11 Uninstall

To uninstall the CONETTIX B6800 Central Station Software Receiver:

1. In Windows go to **Windows>Settings>Apps**.
2. Locate the B6800.
3. Select the B6800 and click **Uninstall**.



Caution!

Data loss

The uninstall procedure will remove all B6800 data. Make sure to back up your data before you uninstall the application.

12

Maintenance

The following links provide more information:

- General information: <https://www.boschsecurity.com/xc/en/support/product-security/>
- Security advisories, that is a list of identified vulnerabilities and proposed solutions: <https://www.boschsecurity.com/xc/en/support/product-security/security-advisories.html>

Bosch assumes no liability whatsoever for any damage caused by operating its products with outdated software components.



Support

Access our **support services** at www.boschsecurity.com/xc/en/support/.

Bosch Security and Safety Systems offers support in these areas:

- [Apps & Tools](#)
- [Building Information Modeling](#)
- [Warranty](#)
- [Troubleshooting](#)
- [Repair & Exchange](#)
- [Product Security](#)



Bosch Building Technologies Academy

Visit the Bosch Building Technologies Academy website and have access to **training courses**, **video tutorials** and **documents**: www.boschsecurity.com/xc/en/support/training/

13 Decommissioning the software

When permanently removing software from servers and workstations, make sure that the removal includes all personally identifiable and sensitive data, such as stored certificates and credentials.

Examples of sensitive or confidential data are:

- Personal data (audio and video data, chats, name, first name, birth date)
- Personally identifiable information (car license plate numbers, IT-shortcuts, customer numbers)
- Certificates or credentials

During decommissioning or before disposal, use the proper tools and methods to remove all relevant data completely and securely.

As a recommended best practice, set servers and workstations back to factory default when reused in other installations.

Bosch Security Systems B.V.

Torenallee 49

5617 BA Eindhoven

Netherlands

www.boschsecurity.com

© Bosch Security Systems B.V., 2024

Building solutions for a better life

202403281623