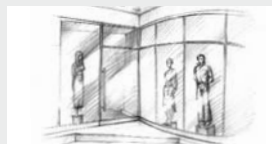


One family. One standard.  
Innumerable security solutions.  
Intrusion control panels  
DS7000 Line.



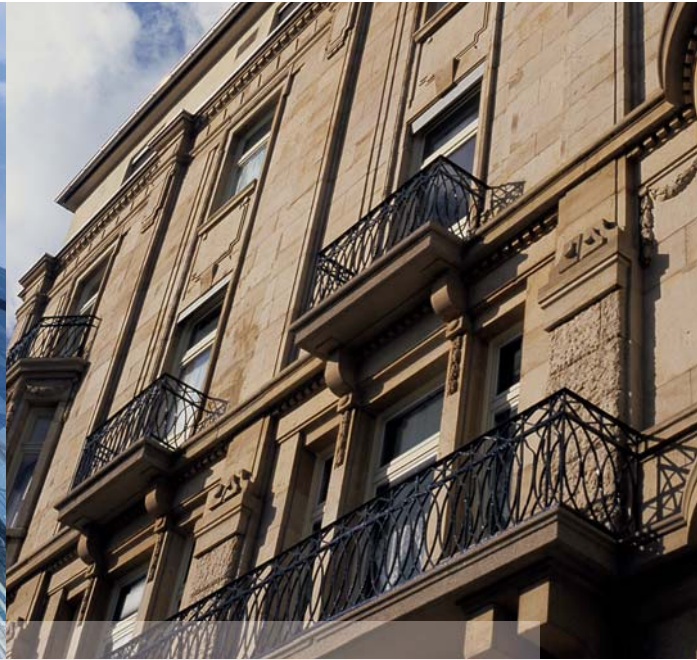
Security Systems



The Bosch DS7000 Line. The product range for reliable intrusion detection, no matter what size of property – small, medium or large.

Security you can rely on.

**BOSCH**



## You can't choose when or where an intrusion will occur.

But you can choose your level of protection. The Bosch DS7000 Line offers a range of effective intrusion control panels. The series provides everyone – even private households and small to midsize firms – with a high performance solution to suit their needs. The product range consists of three models, the DS7220 V2, DS7240 V2 and DS7400 Xi. And all this with the latest technology, superb flexibility and an attractive price/performance ratio. What's more, all three models in the range can be installed and maintained with the same expertise.

### **More security, less time and money.**

The modular design means that the Bosch DS7000 Line can be upgraded effortlessly to suit changing needs. Existing infrastructures can be used for the future – an easy and cost-effective way of upgrading. Beyond that one programming software for all panels means less training. What's more, a comprehensive range of accessories means that it caters for your every wish. Not to forget the wide range of wireless devices available from Bosch.

Additional accessories for motion and fire detection are almost the same for all models in the series. This results in saving time, space and expenditure when it comes to warehousing, logistics and installation. There is no need to handle and store specific accessories for each model.

Two impressive examples for the functionality of the Bosch DS7000 Line are the capabilities of the alarm verification and access control module: Alarms can be managed remotely using sight and sound. False alarms can be identified easily. And verifying real alarms is just as easy, meaning unnecessary police calls and costs for interventions can be avoided.

With the access control module, only authorized persons have admittance. Whatever you want to keep safe is safe. Day and night.

So if security is the question, the Bosch DS7000 Line is the answer you can rely on.

## Security made easy: Bosch DS7220 V2 and DS7240 V2.

Private households and small to midsize businesses are just as concerned with the question of security as large firms. And the DS7220 V2 and DS7240 V2 models hold the answer. These are two powerful yet cost-effective systems from the DS7000 Line that make it easy for everyone to play safe.

Depending on individual requirements, sub-systems for access control, alarm transmission, video systems, receivers for wireless fire and intrusion detection can all be connected via a data bus. Even add-on modules for controlling gates, air-conditioning units and lighting installations can be managed by using the DS7220 V2 / DS7240 V2.

**DS7220 V2. Security isn't a question of size.**  
The DS7220 V2 is made for private households and small businesses. It features up to 24 wired as well as wireless zones. Two partitions can be defined.

**DS7240 V2. At the center of security.**  
With the DS7240 V2, small to medium businesses can increase their level of security. Technically speaking, it is almost identical to its little brother, the DS7220 V2. However, this model features four rather than two partitions and up to 40 zones for wired as well as wireless applications.



	DS7220 V2	DS7240 V2
<b>Zones</b>	8 – 24	8 – 40
<b>Partitions</b>	2	4
<b>Users</b>	32	32
<b>Outputs</b>	4 – 12	4 – 20
<b>Wireless options</b>	yes	yes

## DS7400 Xi. The “Big Brother” of security.



The DS7220 V2 and DS7240 V2 ensure that small and medium-sized properties don't have to go without security. And the DS7400 Xi has the answer to even the most demanding security requirements.

### **The Performance is its strength.**

The DS7400Xi with its 248 alarm zones is the frontrunner when it comes to security systems. It offers great flexibility with plenty of options. What's more, up to 15 keypads can be connected and other systems such as gates, air-conditioning units and lighting installations can be controlled via the DS7400 Xi.

Multiplexing enables addressable detectors to be connected directly to the control panel via a bus system. Compared to conventional systems, multiplexing costs are much lower because you need cables and distributors fewer. Installation work is also reduced. Activated elements will be displayed in full text so as to enable fast localization and simple troubleshooting without complex diagnostics.

### **DS7400 Xi V4+**

8 – 248

8

200

3 – 79

yes

# All properties, one choice for protection: The DS7000 Line.

No matter what size of building and whether for private or commercial use, every model in the Bosch DS7000 Line ensures reliable intrusion detection – from the entry-level DS7220 V2 and the midsize DS7240 V2 through to the large-scale DS7400 Xi.

All of these are easy to install and maintain and offer a cost-effective price/performance ratio. Modular expansion capabilities and individual accessories designed for all three models make the DS7000 Line particularly suitable in the long run. As soon as your requirements change, your security system can change too.

A connection to a monitoring center e.g. from Bosch is possible. All panels include an integrated dialer for alarm transmission. Simple remote diagnostics and maintenance ensure greater cost-effectiveness and protect your investment long into the future.



## Key benefits of the DS7000 Line:

- Just one training necessary to get to know all panels and the software
- A range of products for any size of property and to meet any requirement
- Connection of wired and wireless elements to all panels
- User-friendly operation with same keypads for all panels
- Complementary accessories ensure low warehousing costs and simple logistics
- Maximum functionality, flexibility and security
- Alarm verification, door access and computer networking modules are same for all panels

Bosch Security Systems

For more information please visit  
[www.boschsecuritysystems.com](http://www.boschsecuritysystems.com)

© Bosch Sicherheitssysteme GmbH, 2004  
Modifications reserved  
Printed in Germany  
AS-OT-en-01\_4998144549\_01

**Tradition of quality and innovation.**

For over 100 years, the Bosch name has stood for quality and reliability. Bosch Security Systems proudly offers a wide range of fire, intrusion, social alarm, CCTV, management and communication systems and components to help you find the solution for any application. We are the global supplier of choice for innovative technology backed by the highest level of service and support. When you need solutions you can rely on, choose Bosch.

Security you can rely on.

**BOSCH**

