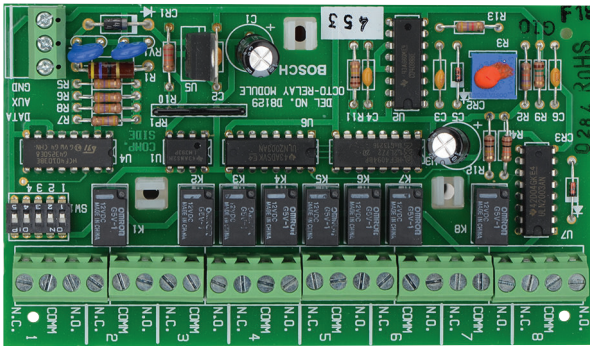


# D8129 Octo-output module, form C relays

www.boschsecurity.com



**BOSCH**  
Invented for life



- ▶ Programmable relay functions
- ▶ Provides eight Form C relays
- ▶ 1 A at 30 VDC relay contact rating
- ▶ Slide switch configuration
- ▶ Allows remote control of relays

The D8129 Octo-relay Module is suitable for applications requiring Form C relays to operate auxiliary systems or to display fire system status at remote annunciators. Building components such as HVAC, door lock releases, and stairwell pressurization can interface with the D8129 for complete system control and monitoring.

Industrial, commercial, and institutional facilities are typical installations for the D8129 module. The eight on-board relays can be programmed to activate on system alarm, system trouble, individual zone or point faults, and through remote control by authorized users.

## System overview

The D8129 Octo-relay Module provides eight programmable Form C relays. Each relay provides dry contact switching rated for 1.0 A at 30 VDC. The relays are accessed through on-board screw terminal connections.

The D8129 uses information from the control panel serial data output to activate the relays. On-board switches are used to configure the D8129 for different operating modes, or to specify relay output numbers. These switches, along with control panel programming options, determine the D8129's response to the serial

data. Programming within the control panel can activate specific relays or sets of relays in response to system conditions.

For the G Series control panels, slide switches are configured for specific relay output numbers, which are activated according to their programming. The D8129 uses five slide switches with multiple setting options to configure its mode of operation. The D8129 receives serial data from the control panel and activates relays in response to control panel conditions and slide switch settings. Relays can be programmed for remote control from a panel keypad.

## Functions

### Output Relays

Each relay output provides a normally-open and a normally-closed output.

### Modes of Operation

A slide switch with multiple switch settings can be used to configure the module for a specific mode of operation for D8112 Series systems, or programming can be used to determine relay operation for G Series systems.

## Certifications and approvals

Australia C-Tick

Region	Regulatory compliance/quality marks	
USA	UL	AMCX: Central Station Alarm Units (UL1610, UL1635), AMCX7: Central Station Alarm Units Certified for Canada (cULus), AOTX: Local Alarm Units (UL464, UL609), AOTX7: Local Alarm Units Certified for Canada (cULus), APAW: Police Station Alarm Units (UL365, UL464), APAW7: Police Station Alarm Units Certified for Canada (cULus), APOU7: Proprietary Alarm Units Certified for Canada (cULus), NBSX: Household Burglar Alarm System Units (UL1023), NBSX7: Household Burglar Alarm System Units Certified for Canada (cULus), UQJZ: Control Units, System (UL864, 9th edition), UTOU: Control Units and Accessories - Household System Type (UL985), UTOU7: Control Units and Accessories - Household System Type Certified for Canada (cULus)
	UL	UL 864 - Standard for Control Units and Accessories for Fire Alarm Systems (10th edition)
	UL	UL 985 - Household Fire Warning System Units (6th edition)
	CSFM	California State Fire Marshal
	FDNY-CoA	6059 [D9412GV3 & D7412GV3]
	FDNY-CoA	6286 D7412GV4 D9412GV4 NYC COA 6286 2018-2021
Canada	ULC	CAN/ULC S304 - Standard for Signal Receiving Center and Premise Burglar Alarm
	ULC	ULC-ORD C1023 - Household Burglar Alarm System Units
	ULC	S303 - Local Burglar Alarm Units and Systems
	ULC	ULC 365 - Police Station Connected Burglar Alarm Units

## Installation/configuration notes

### Compatible Control Panels

- B9512G/B9512G-E
- B8512G/B8512G-E
- D9412GV4/D7412GV4/D7212GV4<sup>1</sup>
- D9412GV3/D7412GV3/D7212GV3<sup>1</sup>
- D9412GV2/D7412GV2/D7212GV2<sup>1</sup>

<sup>1</sup>The D7212GV4, D7212GV3, and D7212GV2 are not listed for commercial fire applications.

### Mounting Considerations

Up to four D8129 Octo-relay Modules can be mounted in a control panel enclosure. For additional modules, use the D137 Mounting Bracket.

## Wiring Considerations

The D8129 connects to a control panel using the 12 VDC Auxiliary output, Serial Data Output, and common terminals. Use 1.5 mm to 0.6 mm (16 AWG to 22 AWG) wires from the module to the control panel.

## Parts included

Quantity	Component
1	Octo-relay module
1	Hardware pack
1	Literature pack

## Technical specifications

### Properties

Board Dimensions:	12 cm x 7.6 cm x 1.9 cm (5.0 in. x 3.0 in. x 0.75 in.)
-------------------	---

### Power Requirements

Current:	130 mA maximum
Voltage:	12 VDC nominal

### Relays

Contact Rating:	1.0 A at 30 VDC for resistive load
Timing:	During pulsed output, relay maintains closure for 1 sec
Type:	Form C dry contact

## Ordering information

### D8129 Octo-output module, form C relays

Provides 8 programmable relays.  
Order number **D8129**

### Accessories

#### D137 Accessory mounting bracket for enclosure

Used to mount accessory modules in B8103, D8103, D8108A, and D8109 enclosures.  
Order number **D137**

#### D138 Mounting bracket, 90°

Used to mount accessory modules with the Bosch 3-hole mounting pattern to increase the capacity of an enclosure.  
Order number **D138**

**Represented by:**

**Europe, Middle East, Africa:**  
Bosch Security Systems B.V.  
P.O. Box 80002  
5600 JB Eindhoven, The Netherlands  
Phone: + 31 40 2577 284  
emea.securitysystems@bosch.com  
emea.boschsecurity.com

**Germany:**  
Bosch Sicherheitssysteme GmbH  
Robert-Bosch-Ring 5  
85630 Grasbrunn  
Germany  
www.boschsecurity.com

**North America:**  
Bosch Security Systems, Inc.  
130 Perinton Parkway  
Fairport, New York, 14450, USA  
Phone: +1 800 289 0096  
Fax: +1 585 223 9180  
onlinehelp@us.bosch.com  
www.boschsecurity.us

**Asia-Pacific:**  
Robert Bosch (SEA) Pte Ltd, Security Systems  
11 Bishan Street 21  
Singapore 573943  
Phone: +65 6571 2808  
Fax: +65 6571 2699  
apr.securitysystems@bosch.com  
www.boschsecurity.asia