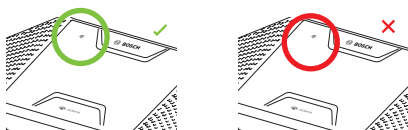
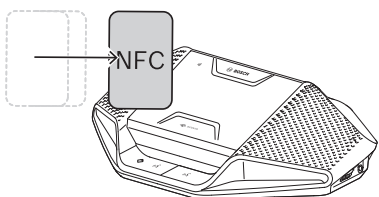
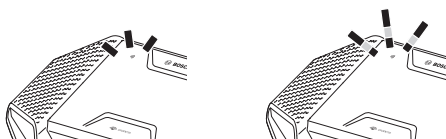


1 - How to login:

- Swipe your card on the left hand side speaker to login.



- Stable/solid wifi icon shows that you have identified yourself successfully.
- Fast blinking wifi icon or no-entry sign show that the identification was not successful.



To log out

Log out by swiping your card again.



2 - How to vote:

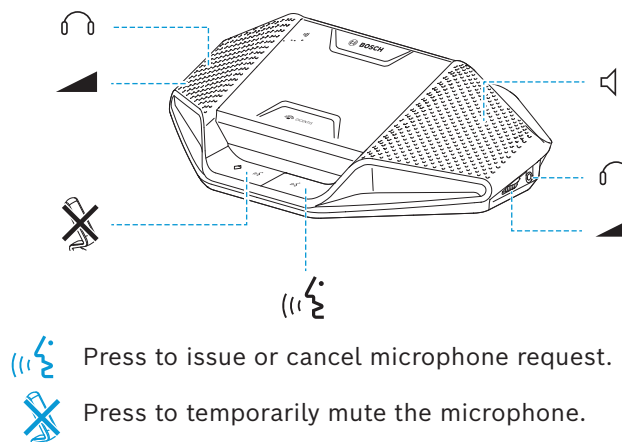
Latin Braille script numbers (1 - 5) are used to identify the voting buttons.

- Use this button to acknowledge your presence.
- Use this button to vote for.
- Use this button to vote against.
- Use this button to abstain.
- Use this button if do not wish to participate in the voting.

3 - How to adjust the volume:



4 - What buttons to press:



- GREEN LED:** Indicates that a request-to-speak is accepted. Flashing indicates first in list. You cannot speak until red light.
- RED LED:** Power on button indicates that the microphone is active you can push the microphone button to disable. Flashing indicates last minute.
- WHITE LED:** White speaker icon indicates that the floor is granted when the button is pressed.