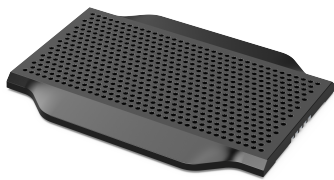


# DCNM-FLSP Flush loudspeaker panel

## DICENTIS



- ▶ Also available in customized colors, wood, stone or metal designs
- ▶ Stylish and modern design
- ▶ Excellent audio quality

The Flush loudspeaker panel is intended for use in combination with the Flush base device (DCNM-FBD). It consists of a loudspeaker behind a grille. The loudspeaker produces excellent audio quality. The loudspeaker can even be active when the microphone is open to ensure the best possible audio experience for the delegates.

### Functions

#### Interconnections

- 2 m (78.7 in) cable terminated with a 2 pole terminal block.

### Parts included

Quantity	Component
1	DCNM-FLSP Flush loudspeaker panel

### Technical specifications

#### Electrical

Frequency response (-3 dB) (Hz) (-3 dB at nominal level)	125 Hz – 15,000 Hz
Total harmonic distortion + noise (%)	0.10%
Nominal acoustic output level (dB SPL) (at 0.5 m)	72 dB SPL
Maximum acoustic output level (dB SPL)	87 dB SPL
Nominal impedance (Ω)	8 Ω / 2 W

#### Mechanical

Mounting type	Click-to-fit in a metal panel with a thickness of 2 mm, or in combination with the DCN-FCOUP Flush coupling and the DCNM-FEC Flush end cap in any surrounding
Dimensions (H x W x D) (mm)	74 mm x 100 mm x 31 mm
Dimensions (H x W x D) (in)	3 in x 4 in x 1.20 in
Weight (g)	175 g
Weight (lb)	0.40 lb
Color (RAL)	RAL 9017 Traffic black

#### Environmental

According to IEC 60721: storage (1K3), transportation (2K2) and operational (3K4).

Transportation temperature (°C)	-30 °C – 70 °C
Transportation temperature (°F)	-22 °F – 158 °F
Storage temperature (°C)	-5 °C – 45 °C
Storage temperature (°F)	23 °F – 113 °F
Operating relative humidity, non-condensing (%)	5% – 90%

## Ordering information

### DCNM-FLSP Flush loudspeaker panel

Flush mounted loudspeaker panel.

Order number **DCNM-FLSP | F.01U.383.840**

---

## Services

### EWE-DCNMFP-IW 12 mths wrty ext DICENTIS Flush Panel

12 months warranty extension

Order number **EWE-DCNMFP-IW**

---

#### Represented by:

##### Europe, Middle East, Africa:

Bosch Security Systems B.V.  
P.O. Box 80002  
5600 JB Eindhoven, The Netherlands  
[www.boschsecurity.com/xc/en/contact/](http://www.boschsecurity.com/xc/en/contact/)  
[www.boschsecurity.com](http://www.boschsecurity.com)

##### Germany:

Bosch Sicherheitssysteme GmbH  
Robert-Bosch-Platz 1  
D-70839 Gerlingen  
[www.boschsecurity.com](http://www.boschsecurity.com)

##### North America:

Bosch Security Systems, LLC  
130 Perinton Parkway  
Fairport, New York, 14450, USA  
[www.boschsecurity.com](http://www.boschsecurity.com)

##### Asia-Pacific:

Robert Bosch (SEA) Pte Ltd, Security Systems  
11 Bishan Street 21  
Singapore 573943  
[www.boschsecurity.com/xc/en/contact/](http://www.boschsecurity.com/xc/en/contact/)  
[www.boschsecurity.com](http://www.boschsecurity.com)