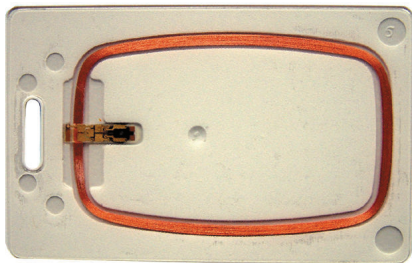




# ACD-PROX II Cards 50/each



- ▶ Plastic card, PVC
- ▶ Dimensions: 86 mm x 54 mm x 1.9 mm
- ▶ Imprinted card number
- ▶ Slot Punch
- ▶ PROX II chip

Contactless credential with PROX chip

## Functions

- PROX II cards are credentials that have an embedded antenna and PROX II chip.
- The card is recognized and read when held in front of the reader.
- The reading process is passive with frequency of 125 kHz.
- PROX II cards are static credentials with a unique chip number and a customer (or facility) number.

## Installation/Configuration Notes

Contactless credentials with PROX II chip are ideal for installations with high-availability systems and where credentials may be exposed to abnormal conditions.

Reading ranges reach up to 12.5 cm depending on the readers used.

## Technical Specifications

PROX II ISO card

Dimensions	85.7 x 54 x 1.9 mm
Coding	Chip number, customer (or facility) code
Transmission frequency	125 kHz
Data preservation	10 years
Transaction times	< 100 ms

## Ordering Information

**ACD-PROX II Cards 50/each**

Packing information: 50 cards/ each unit

**ACD-PROXCARDII**

**Americas:**  
Bosch Security Systems, Inc.  
130 Perinton Parkway  
Fairport, New York, 14450, USA  
Phone: +1 800 289 0096  
Fax: +1 585 223 9180  
security.sales@us.bosch.com  
www.boschsecurity.us

**Europe, Middle East, Africa:**  
Bosch Security Systems B.V.  
P.O. Box 80002  
5600 JB Eindhoven, The Netherlands  
Phone: + 31 40 2577 284  
Fax: +31 40 2577 330  
emea.securitysystems@bosch.com  
www.boschsecurity.com

**Asia-Pacific:**  
Robert Bosch (SEA) Pte Ltd, Security Systems  
11 Bishan Street 21  
Singapore 573943  
Phone: +65 6258 5511  
Fax: +65 6571 2698  
apr.securitysystems@bosch.com  
www.boschsecurity.com

**Represented by**