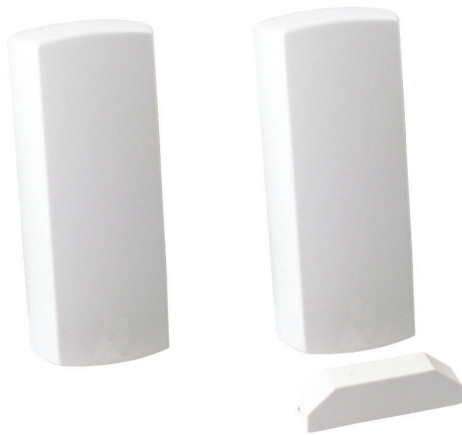




BOSCH

Invented for life

Commercial Wireless ISW-EN1215x Universal Transmitters with Enhanced Security



- ▶ **Programmable as normally-open (NO) or normally-closed (NC)**
- ▶ **Small unobtrusive design**
- ▶ **Fully supervised**
- ▶ **Includes screw-closure housing, cover tamper, wall tamper**
- ▶ **Includes EOL resistor**
- ▶ **Exclusive wireless protocol ensures maximum performance and reliability**

These universal transmitters can make most normally-open (NO) or normally-closed (NC) sensors into wireless devices. The transmitters work with shock sensors, holdup buttons, pressure mats, temperature sensors, status relays, and other devices. They are designed for installations that require more security. They are fully supervised and include screw-closure housings, cover tampers, and wall tampers.

This line of universal transmitters includes:

- ISW-EN1215EOL Universal Transmitter with Wall Tamper and EOL Resistor
- ISW-EN1215WEOL Universal Transmitter with Wall Tamper, Reed Switch, and EOL Resistor

The Commercial Wireless platform uses diversity reception and advanced signal processing to reduce dead spots in transmission areas. The transmitters have superior range and reliability, and are ideally suited for commercial or residential installations.

System Overview

Powered by Inovonics

The Commercial Wireless platform, powered by Inovonics wireless mesh network technology, ensures superior range, reliability, and scalability for commercial applications. Using a wide range of transmitters and repeaters, this proven technology provides flexibility and performance to meet the most stringent requirements. This exclusive protocol is available only on Commercial Wireless products.

Wireless 900 MHz Band

The Commercial Wireless platform sends redundant information on several multi-frequency channels within the FCC Part 15 900 MHz band, providing superior range and reliability. In comparison, systems that use a single frequency technology can only send information on one narrow band channel. Any interference within the band can cause missed signals. With wireless registration, it is easy to add this technology to any application.

Functions

NO or N/C Operation

The universal transmitters work with any standard NO or NC contact (15 ms duration) or sensor.

Supervision

The cover tamper, wall tamper, and battery activity are supervised. Monitoring helps ensure reliable operation.

Wall Tamper and Cover Tamper

The wall tamper switch provides increased security and is ideal for high-end residential applications. The wall tamper switch notifies the system when the transmitter is removed from its mounted surface. The cover tamper switch notifies the system when an intruder attempts to remove the transmitter cover.

Design

The small, unobtrusive design of the transmitters makes them suitable for multiple design needs.

Certifications and Approvals

Region	Certification
USA	UL [ISW-EN1215EOL only] AMCX: Central Station Alarm Units (ANSI/UL 1610,ANSI/UL 1635), APAW: Police Station-connected Alarm Units (ANSI/UL 365, ANSI/UL 464), APOU: Proprietary Alarm Units (ANSI/UL 1076), NBSX: Household Burglar Alarm System Units (ANSI/UL 1023), NBSX7: Household Burglar Alarm System Units Certified for Canada (ULC/ORD-C1023) [ISW-EN1215WEOL only] AMCX: Central Station Alarm Units (ANSI/UL 1610,ANSI/UL 1635), AMQV: Connectors and Switches (UL 634), AMQV7: Connectors and Switches Certified for Canada (ULC/ORD-C634), APAW: Police Station-connected Alarm Units (ANSI/UL 365, ANSI/UL 464), APOU: Proprietary Alarm Units (ANSI/UL 1076), NBSX: Household Burglar Alarm System Units (ANSI/UL 1023), NBSX7: Household Burglar Alarm System Units Certified for Canada (ULC/ORD-C1023)
Brazil	ANATEL 0580-10-5164

Inovonics Wireless Corporation also holds the following approvals.
 FCC Conforms to FCC Part 15 regulations

Installation/Configuration Notes

These universal transmitters are compatible with the following products:

Receivers

ISW-EN4016SK	Survey Receiver
ISW-EN4200	Serial receiver
ISW-EN4216R	LCD Receiver
ISW-EN4204R	LED Receiver
ISW-EN7280	Serial Receiver

Repeater

ISW-EN5040-T	High-power Repeater
--------------	---------------------

Parts Included

ISW EN1215EOL

Quant.	Component
1	Transmitter with screw-closure housing, cover tamper, and wall tamper
1	3.0 V lithium battery
1	2.2 kΩ EOL resistor
1	Mounting bracket
1	Hardware pack
1	Literature – Installation Instructions

ISW EN1215WEOL

Quantity	Component
1	Transmitter with screw-closure housing, cover tamper, wall tamper, and magnetic reed switch
1	Magnet
1	2.2 kΩ EOL resistor
1	3.0 V lithium battery
1	Mounting bracket
1	Hardware pack
1	Literature – Installation Instructions

Technical Specifications

Electrical

Power:	3.0 V, 1.4 Ah
Battery Replacement:	Duracell DL123A, Panasonic CR123A, or approved equivalent. Not all brands are equivalent. Use a specified brand.
Battery Life (Average):	3-5 years. Typical battery life shown assumes operating temperatures of +20°C to +30°C (+68°F to +86°F)

Environmental

Relative Humidity:	Up to 90%, non-condensing
Temperature (operating):	0°C to +60°C (+32°F to +140°F)

Mechanical

Dimensions:	8.9 cm x 4.3 cm x 2.3 cm (3.5 in. x 1.7 in. x 0.9 in.)
-------------	---

Transmission Characteristics

Frequency:	902 MHz to 928 MHz
------------	--------------------

Trademarks

Trademark names are used throughout this document. In most cases, these designations are claimed as trademarks or registered trademarks in one or more countries by their respective owners. Rather than placing a trademark symbol in every occurrence of a trademark name, Bosch Security Systems, Inc. uses the names only in an editorial fashion and to the benefit of the trademark owner with no intention of infringing the trademark.

Duracell is a registered trademark of the Gillette Company, USA, in the United States and/or other countries.

Inovonics is a trademark of Inovonics Wireless Corporation.

Panasonic is a registered trademark of Matsushita Electric Industrial Co., Ltd.

Ordering Information

Commercial Wireless ISW-EN1215EOL Universal Transmitter with Wall Tamper and EOL Resistor	ISW-EN1215EOL
Universal transmitter with tamper switch and end-of-line (EOL) resistor	
Commercial Wireless ISW-EN1215WEOL Door-window Transmitter with Wall Tamper, Reed Switch, and EOL Resistor	ISW-EN1215WEOL
Universal transmitter with tamper switch, magnetic reed switch, and EOL resistor	

Americas:
Bosch Security Systems, Inc.
130 Perinton Parkway
Fairport, New York, 14450, USA
Phone: +1 800 289 0096
Fax: +1 585 223 9180
security.sales@us.bosch.com
www.boschsecurity.us

Europe, Middle East, Africa:
Bosch Security Systems B.V.
P.O. Box 80002
5600 JB Eindhoven, The Netherlands
Phone: + 31 40 2577 284
Fax: +31 40 2577 330
emea.securitysystems@bosch.com
www.boschsecurity.com

Asia-Pacific:
Robert Bosch (SEA) Pte Ltd, Security Systems
11 Bishan Street 21
Singapore 573943
Phone: +65 6258 5511
Fax: +65 6571 2698
apr.securitysystems@bosch.com
www.boschsecurity.com

Represented by