

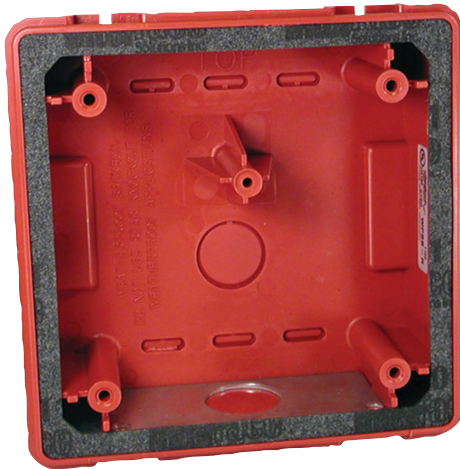
# WPBB-R Weatherproof Back Box

www.boschsecurity.com



**BOSCH**

Invented for life



The WPBB-R Weatherproof Back Box is used to surface mount the ASWP Series Weatherproof Horn-strobes for outdoor or severe environment applications.

## Certifications and approvals

Region	Certification
USA	UL UCST: Audible Signal Appliances, General Signal (UL464), ULSZ: Audible Signal Appliances (UL464)

## Parts included

Quantity	Component
1	Back box
2	Hardware packs

## Ordering information

### WPBB-R Weatherproof Back Box

Used to surface mount the ASWP Series Weatherproof Horn-strobes for outdoor or severe environment applications

Order number **WPBB-R**