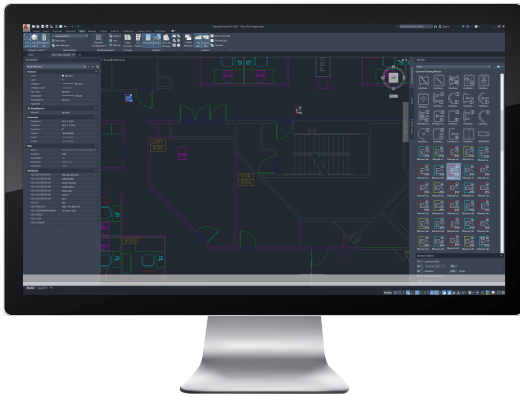


# FSD-CAD-BASE SSD Plugin for AutoCAD® software

## AVENAR design

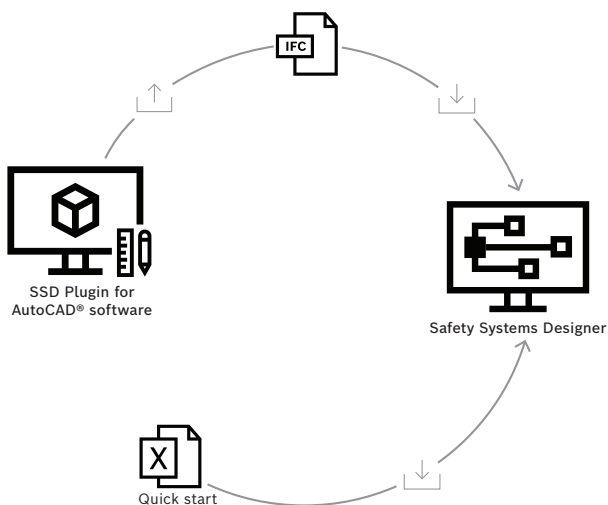


Autodesk screen shots modified courtesy of Autodesk, Inc.

The Bosch SSD plugin supports architects, planners, specifiers, distributors and system integrators to easily and rapidly transfer the designed EN 54 fire alarm devices from AutoCAD® software to Safety Systems Designer, where the further planning steps can be handled (preparation of the bill of materials and tender text, battery calculation, check of the system viability, aso).

It provides an integrated professional CAD blocks library for the planning of EN 54 fire alarm systems.

### System overview



- ▶ Faster and reliable planning thanks to the automated transfer of data between AutoCAD® software and Safety Systems Designer
- ▶ Convenient thanks to the integrated SSD CAD blocks library
- ▶ Usable with any custom CAD blocks thanks to a simple mapping functionality
- ▶ Available in 19 languages
- ▶ Free of charge

### Functions

#### Integrated CAD blocks library

A professional and extensive CAD blocks library is provided together with the Bosch SSD plugin. It contains all relevant fire peripheral devices with their attributes (manufacturer neutral product description, editable panel and loop assignment, editable element address).

#### SSD Project palette

Each addition of a CAD block is immediately reflected at the user interface in the SSD Project palette. This ensures a transparent feedback on the current state of the planning and anytime a close to reality visualization of the full fire alarm system.

#### Panel and loop assignment

Each fire peripheral device configured can be assigned to a specific panel and/or loop via the context menu or via editing the related CAD block attribute field. This assignment is reflected in the Fire project palette and retained during the transfer to Safety Systems Designer. For a more structured overview, each panel and loop can be given a user-defined and appropriate name.

#### Import to Safety Systems Designer

All fire peripheral devices configured in an AutoCAD® software DWG file are automatically saved to a corresponding IFC file located in the same folder.

Based on this IFC file, the total quantities of peripheral devices and their assignment to panels and/or loops can be easily and rapidly imported to Safety Systems Designer. The risk of error resulting from a manual transfer is eliminated.

If the fire peripheral devices are not assigned to panels and/or loops, they will be automatically and evenly distributed after import to Safety Systems Designer to the minimum number of required panels and loops.

### Usable with any CAD block

For an improved comfort and flexibility, the Bosch SSD plugin features can be used with any custom CAD block. A simple mapping functionality allows to enrich any custom CAD block with the needed attributes so that the custom CAD block can be identified by the Bosch SSD plugin, displayed in the Fire project palette, saved automatically to the IFC file and finally transferred to Safety Systems Designer.

### User-friendly installation and operation

A simple setup assistant guides through the installation in a few steps.

The user interface and integrated CAD blocks library are available in 19 languages:

Bulgarian, Croatian, Czech, Dutch, English, French, German, Greek, Hungarian, Italian, Polish, Portuguese, Romanian, Russian, Turkish, Serbian, Spanish, Albanian, Slovenian.

### Parts included

| Quantity | Component                        |
|----------|----------------------------------|
| 1        | SSD Plugin for AutoCAD® software |

### Technical specifications

#### Hardware Preconditions

- Processor, basic: Dual-core 2.5-2.9 GHz
- Processor, recommended: Dual-core 3+ GHz
- RAM, basic: 8 GB
- RAM, recommended: 16 GB
- Monitor resolution, conventional displays: 1920 x 1080 with True Color
- Monitor resolution, High Resolution & 4K Displays: Up to 3840 x 2160 supported on Windows 10, 64-bit systems (with capable display card)
- Disk space: 7 GB

### Software Preconditions

- Safety Systems Designer (version 2.5 or higher) installed
- AutoCAD® software 2020, 2021, 2022, 2023, 2024
- Windows 10 Pro and Enterprise (64 Bit, version 22H2)
- Windows 11 Pro and Enterprise (64 Bit, version 23H2)
- .NET Framework from version 4.8 or later

### Use latest software

Before using the software for the first time, make sure that you install the latest applicable release of the software version. For consistent functionality, compatibility, performance, and security, regularly update the software throughout the operational life.

Autodesk screen shots reprinted courtesy of Autodesk, Inc.

Autodesk and AutoCAD are registered trademarks or trademarks of Autodesk, Inc., in the USA and other countries.

### Ordering information

#### FSD-CAD-BASE SSD Plugin for AutoCAD® software

For automated data transfer between AutoCAD® software and Safety Systems Designer.

Order number **FSD-CAD-BASE**

#### Represented by:

**Europe, Middle East, Africa:**  
Bosch Security Systems B.V.  
P.O. Box 80002  
5600 JB Eindhoven, The Netherlands  
[www.boschsecurity.com/xc/en/contact/](http://www.boschsecurity.com/xc/en/contact/)  
[www.boschsecurity.com](http://www.boschsecurity.com)

**Germany:**  
Bosch Sicherheitssysteme GmbH  
Robert-Bosch-Platz 1  
D-70839 Gerlingen  
[www.boschsecurity.com](http://www.boschsecurity.com)

**North America:**  
Bosch Security Systems, LLC  
130 Perinton Parkway  
Fairport, New York, 14450, USA  
[www.boschsecurity.com](http://www.boschsecurity.com)

**Asia-Pacific:**  
Robert Bosch (SEA) Pte Ltd, Security Systems  
11 Bishan Street 21  
Singapore 573943  
[www.boschsecurity.com/xc/en/contact/](http://www.boschsecurity.com/xc/en/contact/)  
[www.boschsecurity.com](http://www.boschsecurity.com)