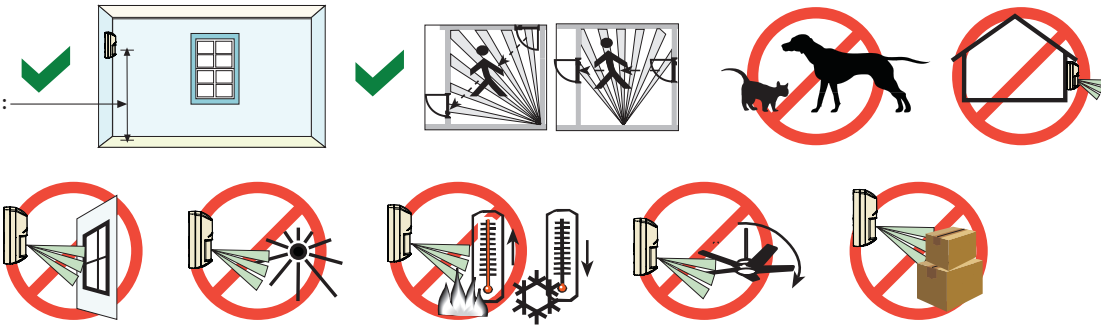




en Installation Guide

ISC-BDL2-W12H (10.588 GHz)
ISC-BDL2-W12G (10.525 GHz)
Optional Brackets:
B328, B338, B335

2,2 m - 2,75 m
(7.5 ft - 9 ft)
Recommended:
2,2m (7.5 ft)



Changes or modifications not expressly approved by Bosch Security Systems, Inc. can void the user's authority to operate the equipment.

UL/C-UL
Perform Walk Test at least once a year.
Use only a Listed limited-power source.
The Listed control unit or a Listed burglary power supply must provide 4 hours (40 mAh) of standby power.
Install the unit in accordance with National Electrical Code NFPA 70 and Part 1 of the Canadian Electrical code CSA C22.1.
Adjust the microwave range control, if necessary, to achieve maximum range.

SELV
Connect all wiring to a safety extra-low voltage (SELV) circuit only.

IP30 IK04 (EN 60529, EN 62262)

Ligue todas as cablagens apenas a um circuito de segurança de tensão extra baixa (SELV).

Conecte el cableado únicamente a un circuito de seguridad para voltajes muy bajos (SELV).

Alle Drähte sind ohne Ausnahme an Niederspannung anzuschließen.

Sluit alle bedrading uitsluitend aan op een circuit met een extra lage veiligheidsspanning.

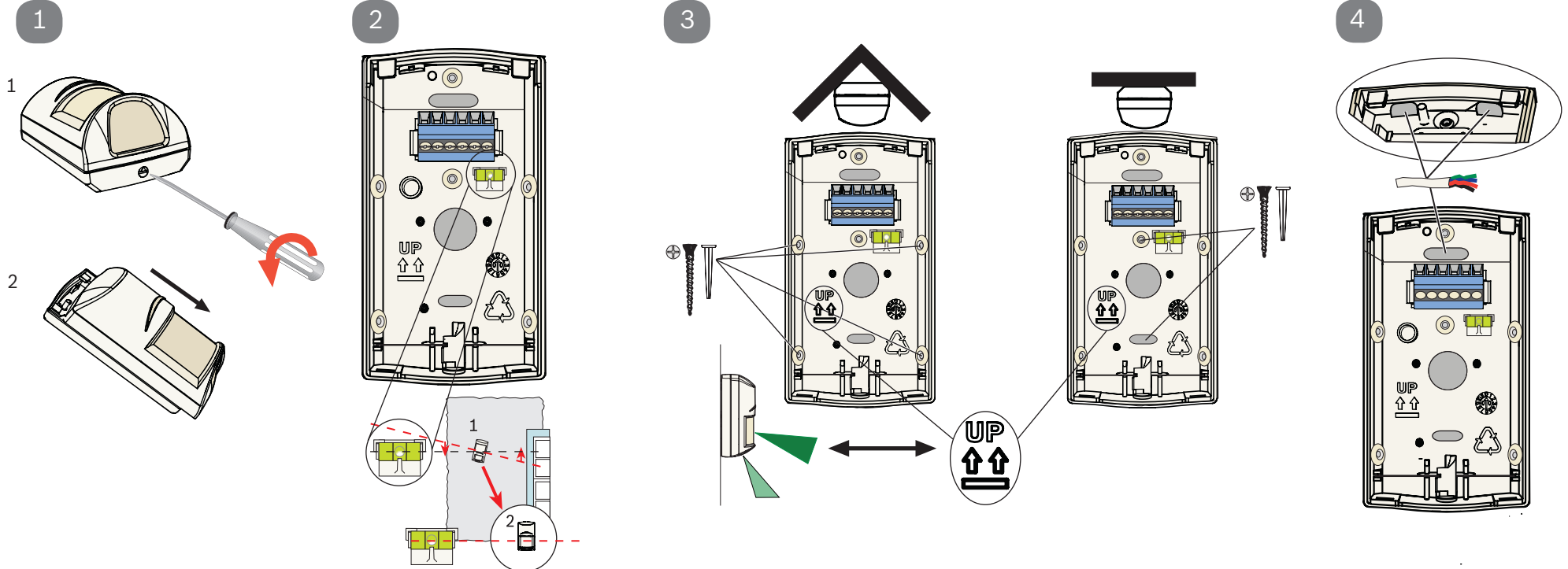
Prenez soin de connecter tous les câbles à un circuit à très basse tension de sécurité (TBTS).

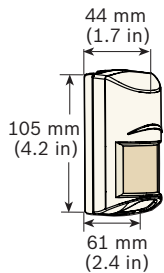
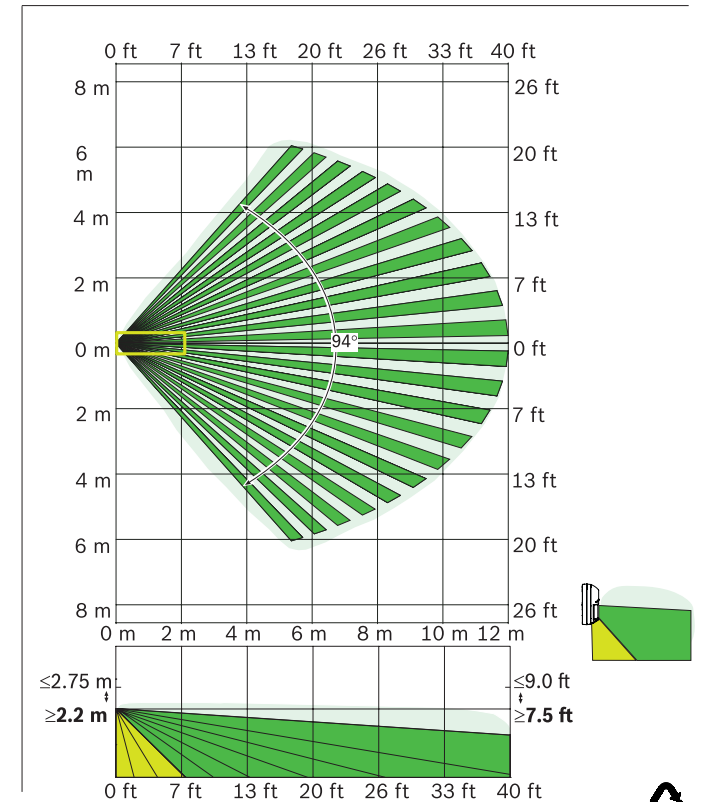
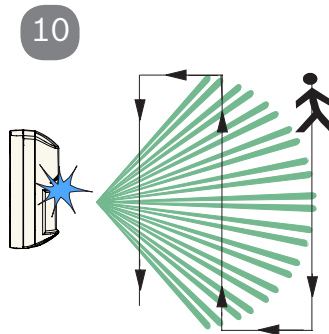
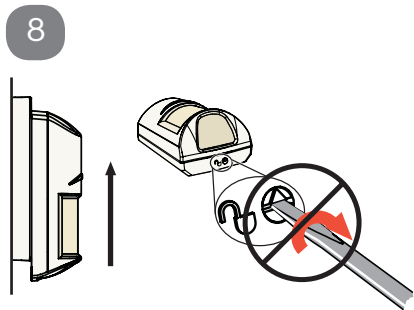
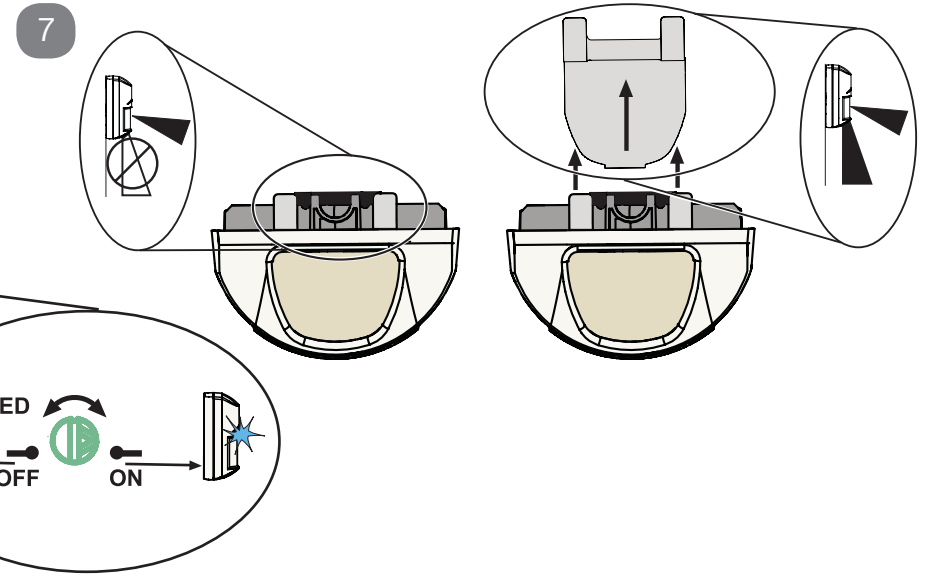
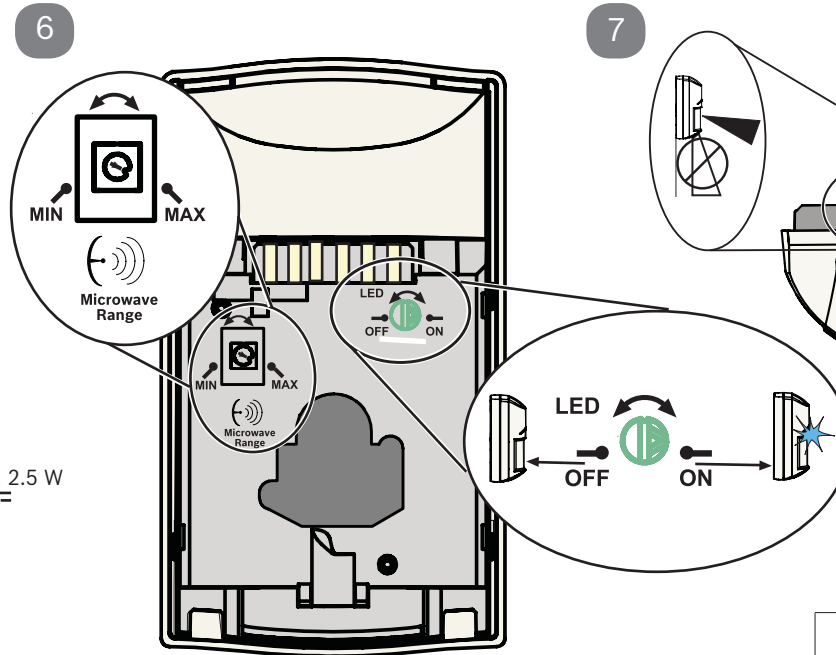
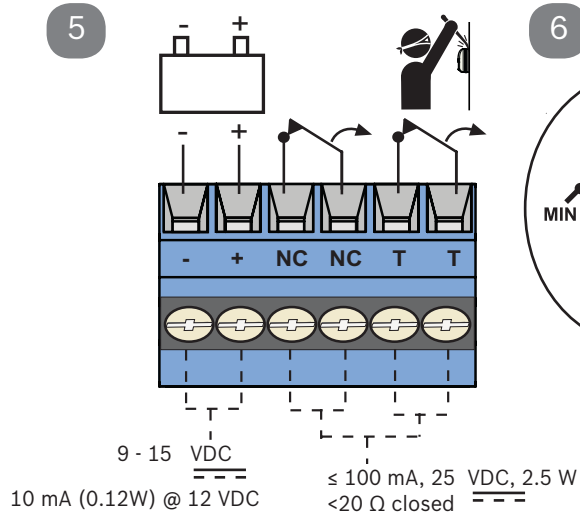
Collegare tutti i cavi esclusivamente a un circuito SELV (circuito di sicurezza a bassissima tensione).

-30°C to +55°C
(-20°F to +130°F)
UL Listed installations,
the temperature
range is 0°C to +49°C
(+32°F to +120°F)

0 - 95% Relative Humidity
(0 - 85% UL/C-UL Installations)

För svensk installationsanvisning se www.boschsecurity.se.





? → www.boschsecurity.com

Reading Bosch Security Systems, Inc. Product Date Codes
For Product Date Code information, refer to the
Bosch Security Systems, Inc. Web site at:
<http://www.boschsecurity.com/datecodes/>.

ANATEL
Modelo: ISC-BDL2-W12G
2140-10-1855

(01) 07891009522227

Este equipamento opera em caráter secundário, isto é, não tem direito à proteção contra interferência prejudicial, mesmo de estações do mesmo tipo e não pode causar interferência a sistemas operando em caráter primário.