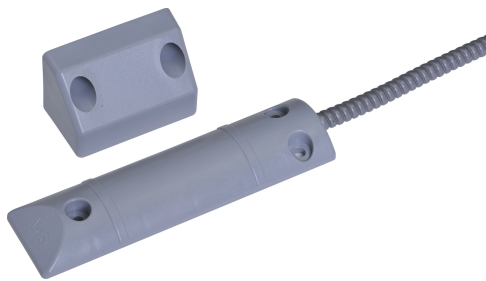


ISC-PRS-S3S Roller shutter contact EN-G3

www.boschsecurity.com



BOSCH
Invented for life



- ▶ Conventional shutter door contact
- ▶ EN50131-2-6 Grade 3
- ▶ Tamper surveillance
- ▶ High level of mechanical strength
- ▶ Conventional perimeter protection

Conventional shutter door contacts are used to monitor shutter, sliding and garage doors.

Certifications and approvals

Region	Regulatory compliance/quality marks	
Finland	FK	RL 13 087 [ISC-PRS-S3S]
Germany	VdS	G 103127 [ISC-PRS-S3S]
Europe	CE	ISC-PMC-SF2S, ISC-PMC-F3S, ISC-PMC-S3S, ISC-PRS-S2S, ISC-PRS-S3S
	EN50131 1	ISC-PRS-S3S
Russia	GOST	EAC

Installation/configuration notes

Installation information

- For doors < 1.5 m, one shutter door contact is required. For doors > 1.5 m, use two shutter door contacts. Take note of the permissible installation tolerances.
- The shutter door contact consists of a sealed magnetic switch and a magnet in a plastic housing. The connection cable is protected over a length of 1 m by flexible metal conduit.

- The magnetic switch is installed at ground level (requires a flat surface). The switch will not be damaged if driven over by vehicles with rubber tires. However, the magnetic switch must not be used as a door stopper.
- The supply lines must be electrically measured prior to connection.

Parts included

Quantity	Component
1	Shutter door contact
1	Magnet
1	Cable
1	Installation material

Technical specifications

Electrical

Maximum load in W	3
Maximum switching voltage in VDC	30
Minimum switching current in mA	0.01
Maximum switching current in mA	100

Mechanical

Minimum installation distance in cm	3
Maximum installation distance in cm	3.5
Reed contacts	Normally open
Material (magnet)	AlNiCo 500
Material (cable)	Plastic
Color	Gray
Dimension in cm (H x W x D) (switch)	1.5 x 4 x 1.35
Dimension in cm (H x W x D) (magnet)	6.5 x 4.2 x 3.5
Weight in g (including cable and magnet)	250
Cable type	LiYY-ZGL 4 x 0.14 mm ² SN, white, suitable for LSA-PLUS insulation displacement technology

Cable length in m	1
Cable protection tube	Flexible metal, diameter: 6/9 mm, covered in plastic, gray
Cable protection tube length in m	1
Switch cycles	10 ⁷

Environmental

Minimum operating temperature in °C	-40
Maximum operating temperature in °C	70
Protection class	67
Environmental class	VdS: III - EN: IIIa

Ordering information**ISC-PRS-S3S Roller shutter contact EN-G3**

For monitoring shutter, sliding, and garage doors, tamper surveillance

Order number **ISC-PRS-S3S**

Represented by:

Europe, Middle East, Africa:
 Bosch Security Systems B.V.
 P.O. Box 80002
 5600 JB Eindhoven, The Netherlands
 Phone: + 31 40 2577 284
 emea.securitysystems@bosch.com
 emea.boschsecurity.com

Germany:
 Bosch Sicherheitssysteme GmbH
 Robert-Bosch-Ring 5
 85630 Grasbrunn
 Germany
 www.boschsecurity.com

North America:
 Bosch Security Systems, Inc.
 130 Perinton Parkway
 Fairport, New York, 14450, USA
 Phone: +1 800 289 0096
 Fax: +1 585 223 9180
 onlinehelp@us.bosch.com
 www.boschsecurity.us

Asia-Pacific:
 Robert Bosch (SEA) Pte Ltd, Security Systems
 11 Bishan Street 21
 Singapore 573943
 Phone: +65 6571 2808
 Fax: +65 6571 2699
 apr.securitysystems@bosch.com
 www.boschsecurity.asia