

Analog Fiber Optic Kit

VGA-FIBER-AN



BOSCH

en Installation Guide

Table of Contents

1	Analog Fiber Optic Installation	4
1.1	Parts List	4
1.2	Install the Analog Fiber Module	5

1 Analog Fiber Optic Installation

This guide provides instructions for installing the analog, multimode fiber optic video and data transceiver module for use with VG5 100 and 600 Series AutoDomes. This unit mounts directly into the AutoDome's power supply box, and allows for the simultaneous transmission of video and PTZ data over one multimode optical fiber. The optical transmitter converts the analog, baseband video and data biphasic signals to an optical signal.

1.1 Parts List

Quantity	Description
1	Multimode Fiber Optic board
1	Metal Base Plate
1	Power Harness (black)
3	Plastic Standoff Pins
1	Coax Patch Cable with BNC Connectors
1	M2.5 Phillips pan screw

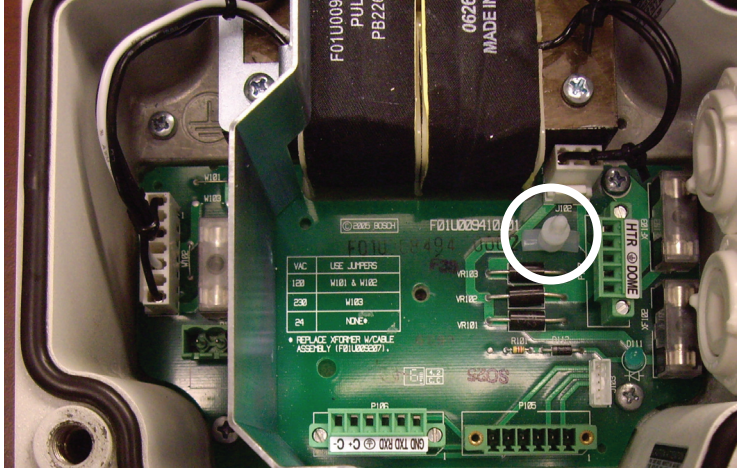
1.2 Install the Analog Fiber Module

Use the following instructions to install the VGA-FIBER-AN Fiber Optic kit in the VG5 Power Supply Box.

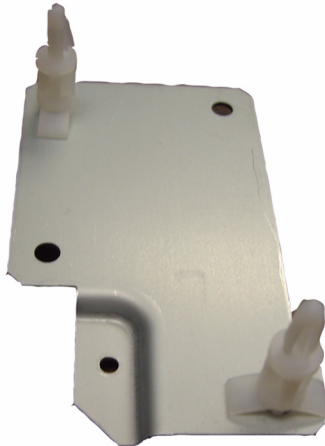
1. Unpack the fiber optic module kit, and remove the parts from the bag.
2. Turn off the power to the VG5 power supply box and remove the cover.
3. Check the P106 connector on the power supply board for the 6-pin connector with the 100 Ω resistor that shipped with the power supply box.



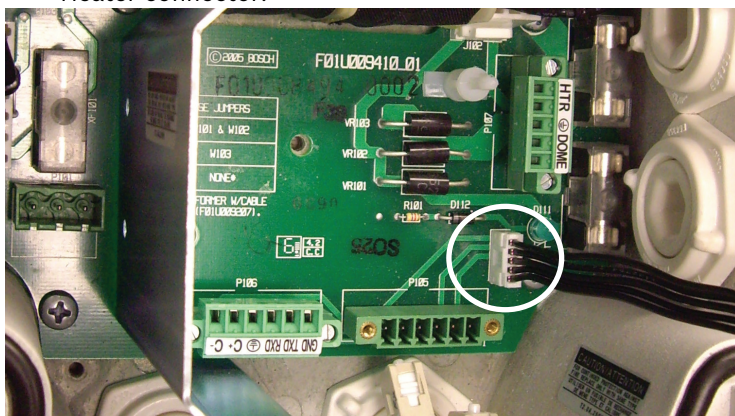
4. Remove the 6-pin connector from the P106 connection, if present, or remove any resistor from the P106 connector.
5. Insert one plastic standoff pin into the hole on the main power supply board next to the Heater connector.



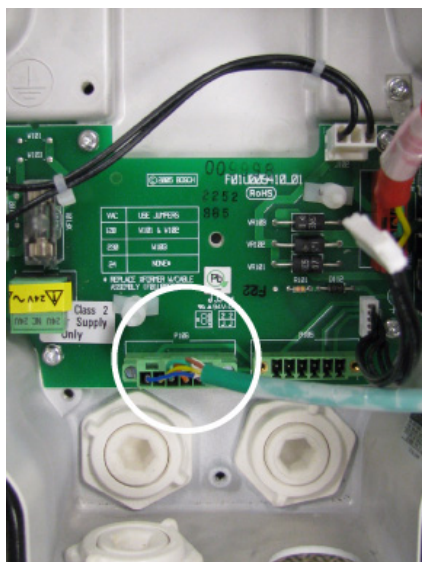
6. Insert two standoff pins into the top left and bottom right corners of the metal base plate as shown below.



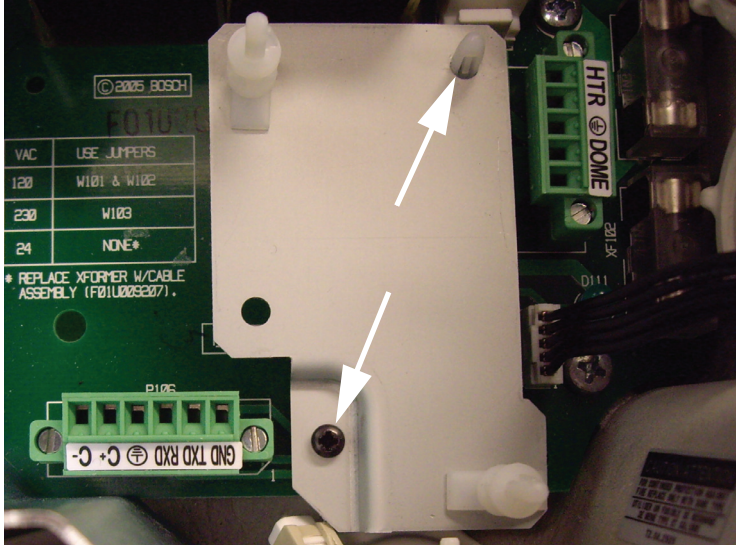
- 7. Attach the supplied power harness (black) into the J103 socket on the power supply board, located below the Heater connector.



- 8. Connect the green Serial Communication cable, from the AutoDome, to the P106 connector on the power supply board. This step is required only for a VG5 AutoDome wall, corner, or mast mount installation.



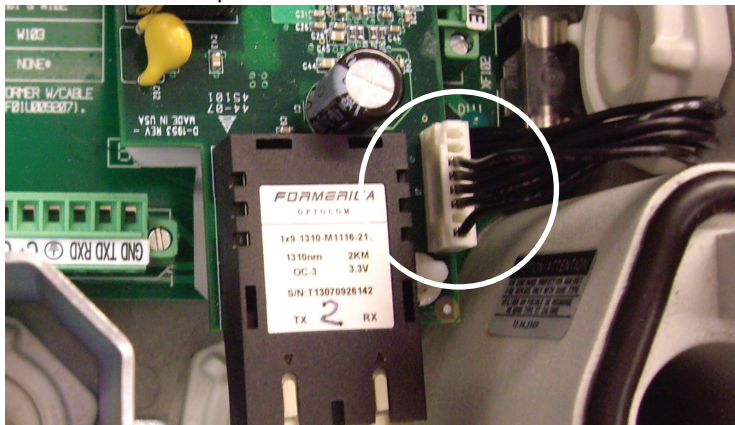
- Align the upper right hole in the base plate to the standoff pin attached to the power supply box and press the base plate onto the pin. Secure the base plate with the supplied screw in the lower left hole of the P105 connector below.



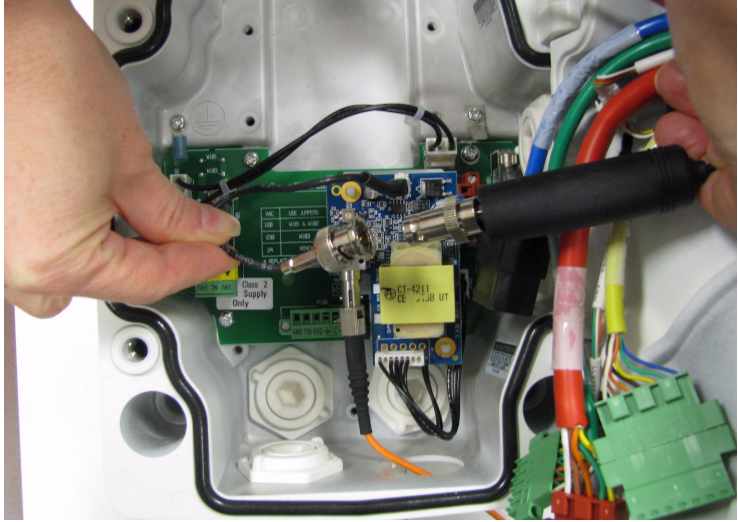
10. Hold the fiber optic module in one hand and attach the fiber optic cable with an ST type connector to the fiber optic socket in the module.



11. Align the anchor holes on the fiber optic module board to the standoff pins on the base plate and press the module onto the standoff pins until secure.
12. Attach the supplied power harness (black) to its connector on the fiber optic module.



13. Connect the coax cable to the Coax IN socket on the fiber optic module. Then connect the coax mating cable from the AutoDome to the BNC connector on the fiber optic module.



14. Close and secure the power supply box when finished.
15. Restore the power to the power supply box.

Bosch Security Systems, Inc.

850 Greenfield Road

Lancaster, PA 17601

U.S.A.

www.boschsecurity.com

© Bosch Security Systems, Inc., 2011