



BOSCH

Access Professional Edition

en

Installation manual

Table of contents

1	System Overview	5
1.1	Restrictions and options	6
1.2	Installation on one computer	8
1.3	Installation on multiple computers	9
1.4	System Prerequisites	10
1.5	Single-Board Computer	11
2	SQL Server	13
2.1	SQL Server Support	13
2.2	Installation of SQL Database	15
3	Installation	21
3.1	Requirements	22
3.2	Beginning the Installation	23
3.3	Language Selection and Preparing	23
3.4	License Agreement	25
3.5	Customer Information (server only)	26
3.6	Choosing the type of Installation.	27
3.6.1	Shared Folder Protection	28
3.6.2	Entering the Server for Client installations	29
3.7	Choosing the installation path	30
3.8	Choosing Components	31
3.8.1	Client Installation	33
3.9	Selecting supported languages	34
3.10	Default configuration language (server only)	34
3.11	Confirming Choices	36
3.12	Setup Status	37
3.13	Installation completed	38
4	Product usage	39
4.1	Licensing	39
4.1.1	License packages and their content	40
4.1.2	Activating licenses	42
4.2	Setting Server access rights	44
4.3	Changing the backdrop	46
4.4	Language settings	46
4.5	Configuring the system to your needs	48
4.6	Map Viewer and Alarm Management	48
4.6.1	Configuring a map	49
4.6.2	Adding a device to a map	51
4.7	X-Protect Integration	52
5	Deinstallation - Reinstallation	54
5.1	Backup and Restore	54
5.2	Deinstallation	55
5.2.1	Windows Software	56
5.2.2	Initialization	57
5.2.3	Confirming the Deinstallation	57
5.2.4	Close all programs	57
5.2.5	Performing an Export	59
5.2.6	Declining the Export	60
5.2.7	DbiTool	60

5.2.8	Setup Status	61
5.2.9	Completion and Reboot	62
5.3	Modify the software	64
5.4	Reinstallation/Update	64
5.4.1	Import	66
5.4.2	DbiTool	68
5.4.3	Check the Configuration	68
5.4.4	Installation completed	68
6	User rights	69
7	UL 294 Requirements	70

1 System Overview

The Access Professional Edition System (hereunder referred to as **Access PE**) provides a self-contained access control for small and medium sized companies. It consists of several modules:

- LAC Service: a process which is in constant communication with the LACs (Local Access Controllers – hereafter referred to as Controllers). AMCs (Access Modular Controllers) are used as Controllers.
- Configurator
- Personnel Management
- Logviewer
- Alarm Management
- Video Verification

The modules can be divided into server and client modules.

The LAC service needs to remain in constant contact with the controllers because firstly it constantly receives messages from them regarding movements, presence and absence of cardholders, secondly because it transmits data modifications, e.g. assignment of new cards, to the controllers, but mainly because it carries out meta-level checks (access sequence checks, anti-passback checks, random screening).

The Configurator should also run on the server; however it can be installed on client workstations and operated from there.

The modules Personnel Management and Logviewer belong to the Client component and can be run on the Server in addition, or on a different PC with a network connection to the server. The following Controllers can be used.

- AMC2 4W (with four Wiegand reader interfaces) - can be extended with an AMC2 4W-EXT
- AMC2 4R4 (with four RS485 reader interfaces)

1.1 Restrictions and options

You can use Access PE for systems that do not exceed the following thresholds for connectable components and manageable data volume.

- Max. 10,000 cards
- Up to three cards per person
- PIN length: 4 to 8 characters (configurable)
- PIN types:
 - Verification PIN
 - Identification PIN
 - Arming PIN
 - Door PIN
- Access variants:
 - Card only
 - Card with PIN (Verification PIN)
 - PIN or Card (Identification PIN)
- Max. 255 time models
- Max. 255 access authorizations
- Max. 255 area-time authorizations
- Max. 255 authorization groups
- Max. 16 workstations
- Max. 512 readers
- Max. 3 I/O extension boards (AMC2 8I-8O-EXT, AMC2 16I-16O-EXT or AMC2 16I-EXT) per Controller
- The following restrictions apply to each controller type:

Controller	APC-AMC2	APC-AMC2	APC-AMC2
Readers/entrances	4WCF	4WCF with API-AMC2 4WE	4R4CF
Max. readers per AMC	4	8	8
Max. readers per interface/bus	1	1	8

Tab. 1.1: System limits – readers and entrances

Video system – restrictions and options

- Max. 128 cameras
- Up to 5 cameras per entrance
 - 1 identification camera
 - 2 back surveillance cameras
 - 2 front surveillance cameras
 - You can configure one of these cameras as an alarm and log book camera.

Offline Locking System (OLS) – restrictions and options

- Max. 256 doors
- The number of entrances and authorization groups in the authorizations depends on the dataset length that can be written to the cards.
- Max. 15 time models
- Up to 4 periods per time model

-
- Max. 10 special days/holidays (from the online system)
 - The OLS functionality is only given with card No.1.

**Notice!**

USB devices which are connected at a remote desktop as e.g. enrollment readers are not supported.

1.2 Installation on one computer

The following figure shows a complete Access PE system installed on a single computer. Controllers can be connected via a TCP/IP network or a serial interface. If a dialog reader is used then this is also connected via a serial interface.

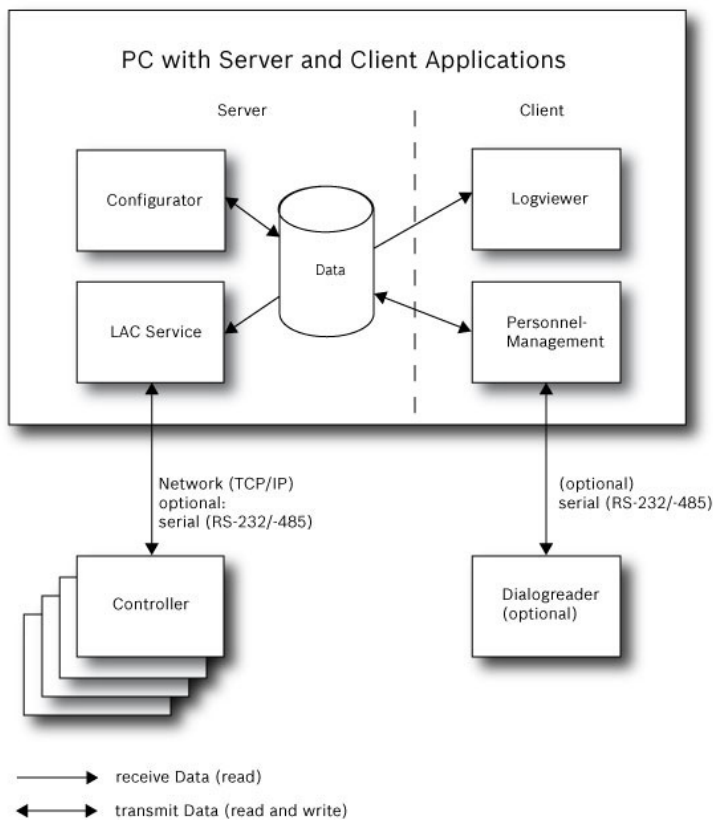


Figure 1.1: System Overview – Single Computer Configuration

1.3 Installation on multiple computers

The following figure shows an Access PE system distributed across 2 computers. This is particularly beneficial in cases where the Server to which the Controllers are connected is in a locked computer room, but the personnel data is maintained, for example, by the personnel department elsewhere.

The Access PE Client can be operated on up to 16 computers in parallel, which have access to common data on the Server via the network.

Client workstations can be configured to use two monitors.



Notice!

After an **Uninstall for Update** check if all files have been removed from the folder .. \BOSCH \Access Professional Edition with the exception of the folders **SaveData** and **Licensing**.

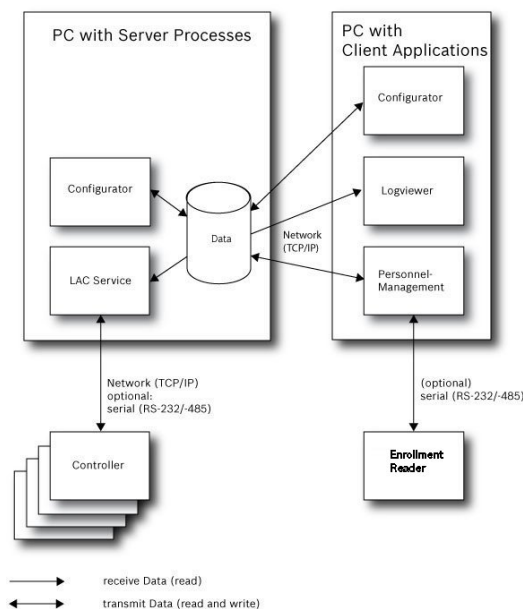


Figure 1.2: System overview – Distributed System

During the installation the system installs a separate local user (**ApeUser + server name**) on the Server and the Client. Through ApeUser the access to the server data is executed.



Notice!

- No access to Server data when the **ApeUser** is missing or modified.
- Do not delete or disable the ApeUser.
- Do not modify the password.

See Chapter **4.2 Server Access Rights** for further information.

1.4 System Prerequisites

The installation of Access PE requires:

Operating Systems (one of):

- Windows 2016 Standard Server (64 bit)
- Windows 2012 R2 Server
- Windows 10 X64 professional
- Windows 7



Notice!

Microsoft Windows XP of all versions is not supported by the Access Professional Edition from version 3.1 onwards.

Minimum Hardware Requirements

Both Server and Client require a Standard Windows PC with:

- 2 GHz quad core or 3 GHz dual core CPU
- 4 GB RAM at least
- 20 GB free disk space (Server)
- 1 GB free disk space (Client)
- 100 Mbit Ethernet Network Card (PCI)
- Graphical adapter with 1024x768 resolution and 32k colors
- Resolution support:
 - 1024 by 768
 - 1280 by 1024
 - 1920 by 1080
 - 2560 by 1080

1.5 Single-Board Computer

It is possible to run the Access Professional Edition (APE) on a **Single-Board Computer (SBC)**. Basically the capacity of an **SBC** as e.g. the Intel Compute Stick STK1AW32SC or other low-end hardware may **not correspond with the system prerequisites** of the Access Professional Edition (see chapter 1.4).



Notice!

An SBC can only be used if LAN or WIFI and the connected hardware are permanently available.

An SBC should be configured only with a reduced feature set as specified with the **Base License** (up to 16 readers).

Due to the low hardware performance a wireless connected SBC should **not** be used with the **Alarm Management** and **Video Management**, as the network stability is critical with these features.

The APE was tested on the following device which can be used as a reference for minimum system prerequisites for operating a Base License:

Intel Compute Stick STK1AW32SC

Product Name	Intel BOXSTCK1A32WFCR
Dimension	147 x 89 x 0.7 mm
Processor brand	Intel Atom x5-Z8-300, 4x1.44 GHz
RAM size	2 GB
Memory Technology	DDR3L
Computer Memory Type	DDR3 SDRAM
Hard Drive Size	32 GB
Voltage	1.35 V
Wattage	4 W
Power Source	USB
Operation System	Windows 10

Windows Operating System preconditions

When working with a low-end hardware as e.g. an SBC, we recommend the following hardware- and operating system-specific settings and preconditions in order to ensure seamless operation of the APE software:

- Use fixed IP addresses.
- Disable all power saving options.
 - Select a high performance power plan.
 - Disable power savings within the USB settings.
- Disable Hibernate functions.
- Disable automatic Windows operating system updates.
- Apply a USB Ethernet Adapter in case the WiFi connection is unstable.
- Ensure that the screen resolution matches the SBC hardware requirements. For the exemplarily tested device the recommended resolution is 1920x1080.

-
- Ensure that sufficient memory is available. We recommend a free memory of 5GB for installing and operating the APE software. Use an external hard disk or apply a microSD to the SBC in case internal memory is not sufficient.
 - Create Windows recovery CDs and save entry points on a regular basis.
-

**Notice!**

When using a Single Board Computer (SBC) it may not be possible to create a recovery CD or to use entry points.

2 SQL Server

2.1 SQL Server Support

All data which are written into the event logfile, can also be stored in an SQL database. As a reference we suggest the Microsoft® SQLServer® 2014 Express, SP 1x 64 installed on Windows 10 x64 Pro.

An SQL server connection can be configured in the lower section on the right side of the **Settings** screen of the Configurator

For more details refer to the Configuration manual.



Notice!

Make sure to install the SQL database on the same physical or virtual machine as the APE server.
Consequences



Notice!

When using the Configurator to configure the SQL database, the configurator must be started on the APE server PC.

The Configurator must not be started on a client in this case.

- Enter the instance ID of the database in the entry field **Instance**.
- If credentials are required, enter **User** and **Password**.
- Click the button **Check SQL Database Connection**.
- If no APE database server exists so far, move to the Configurator and click **Create APE Database**.

Check SQL Database Connection

The screenshot shows a dialog box titled "Check SQL Database Connection". It is divided into two main sections. The top section, "SQL-Server Database", includes input fields for "Server" (containing "AC3X0013BT1"), "Instance" (containing "SQLExpress"), "User", and "Password". Below these fields is a button labeled "Check SQL Database Connection". The bottom section, "APE Database", has an input field for "APE Database" (containing "BOSCH AccessPE") and a button labeled "Create APE Database". At the very bottom of the dialog is a large, prominent button labeled "Activate SQL-Database". The status bar at the bottom of the window shows "LAC-Service online" with a green indicator and "NUM RF".

Edit the name of a new valid instance ID. This causes that a new APE database is created in the specified instance.

If an APE Database exists already or after you have created one, click **Activate SQL Database**. The system does not import existing logbook data if upgraded to an APE release with SQL database support.

If the limit of 100,000 messages is reached, the system will stop buffering events. Once the SQL service is accessible again the buffered messages are added to the SQL database. The message buffer is not included in the APE system backup.



Notice!

The user is responsible to maintain the database such as to erase old entries, keep the SQL installation updated etc.

Consequences



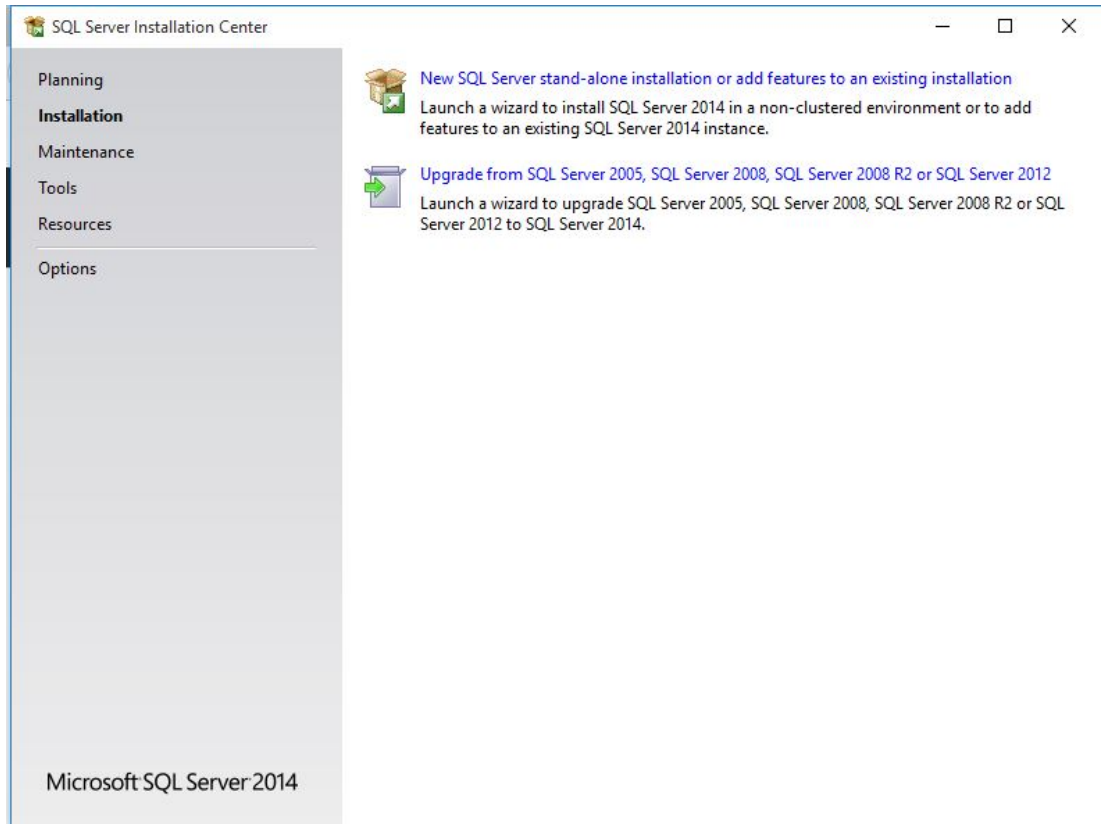
Notice!

It is possible to enable or disable the SQL database service.

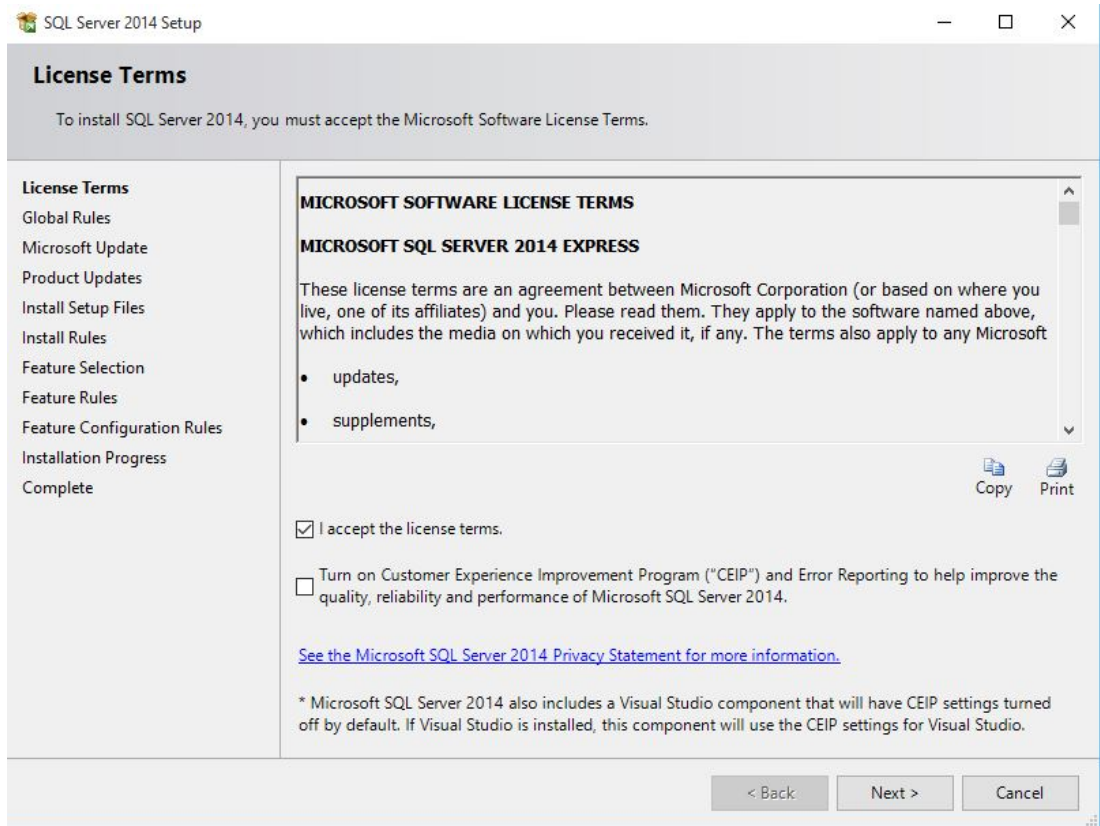
If the service is disabled, a Windows message box will warn the user.

2.2 Installation of SQL Database

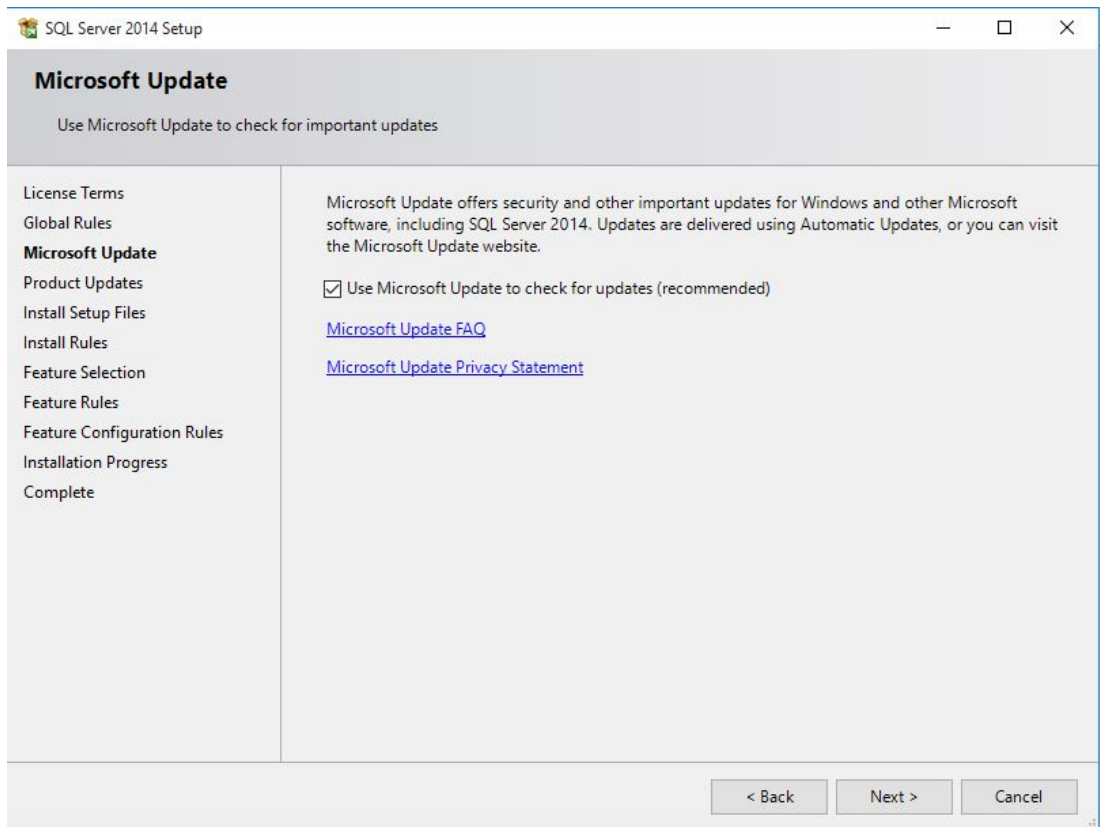
Download the **Microsoft® SQL Server® 2014 Express Edition SP1** from the Microsoft homepage. After the start of the application the **SQL Server Installation Center** is displayed. Select **Installation**.



- Select **New SQL Server**.
- Select **License Terms**.

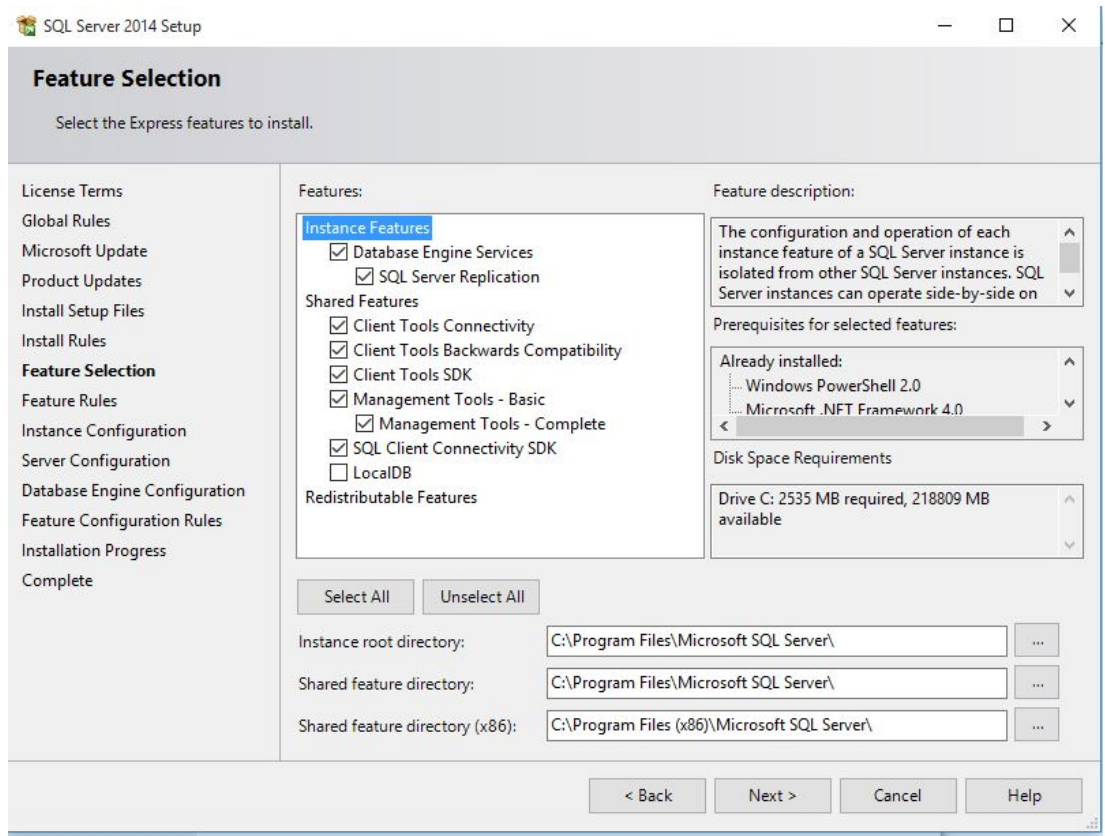


- Accept the license terms and click **Next >** to proceed.
Select **Microsoft Update**.



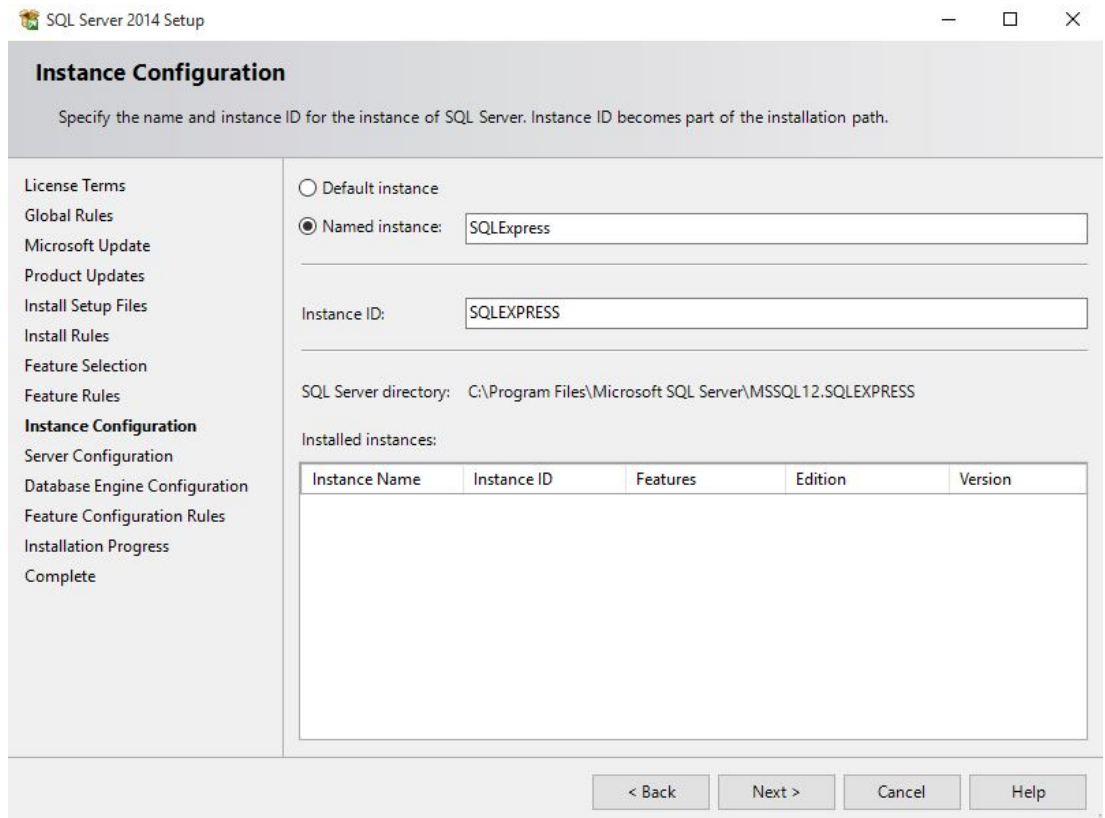
- Select **Use Microsoft Update to check for updates** and click **Next >** to proceed.

Select **Feature Selection**.



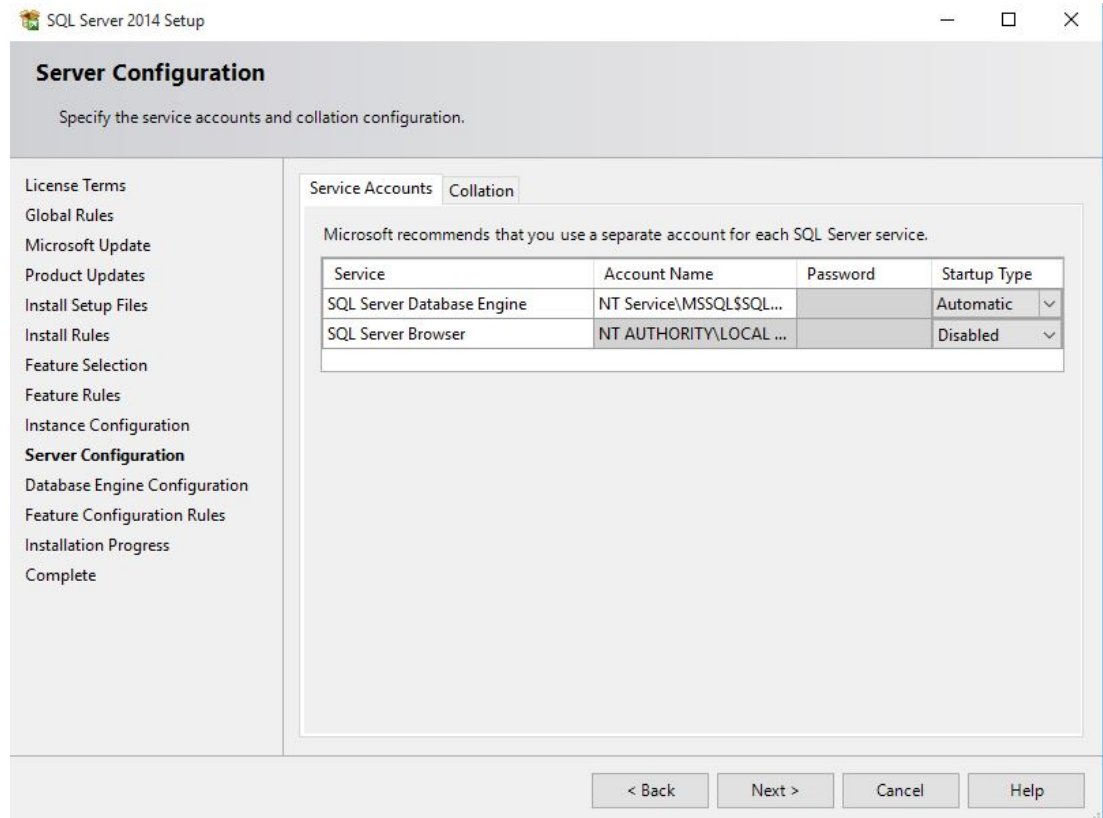
– Select the required **Features** from the list and click **Next >** to proceed.

Select **Instance Configuration**.

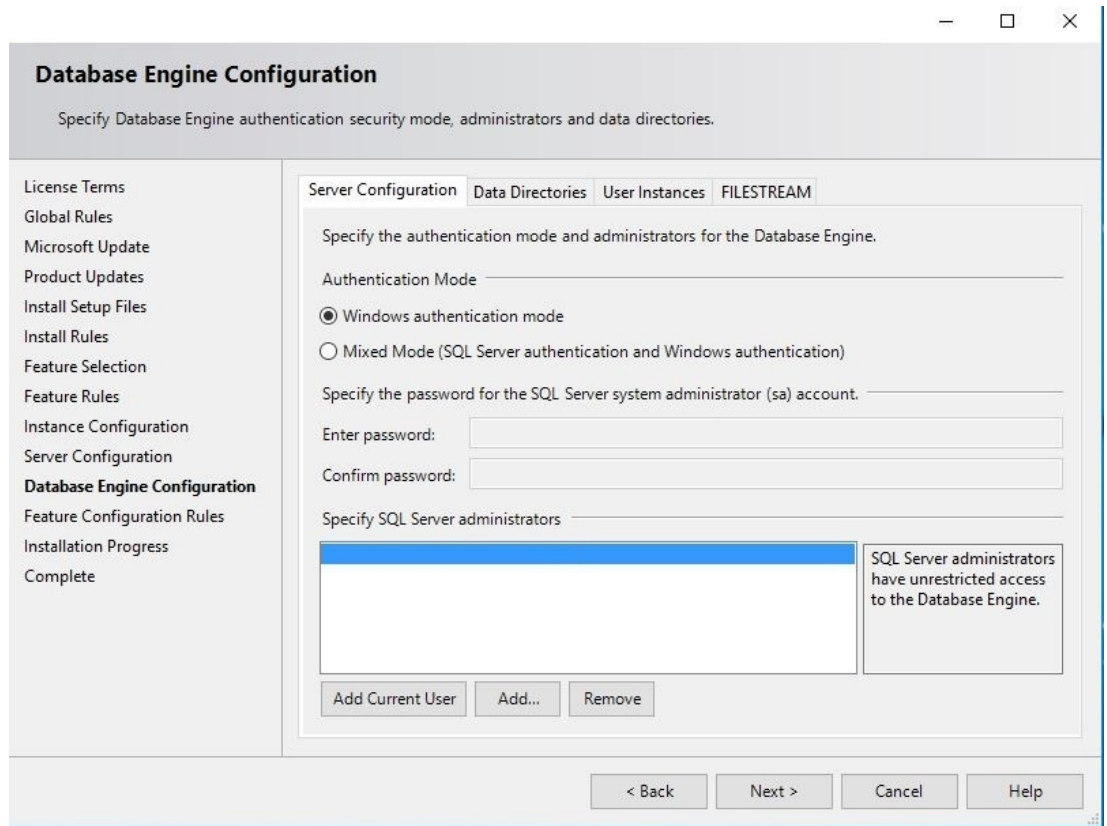


- Select one of the radio buttons **Default instance** or **Named instance**.
- Click **Next >** to proceed.

Select **Server Configuration**.

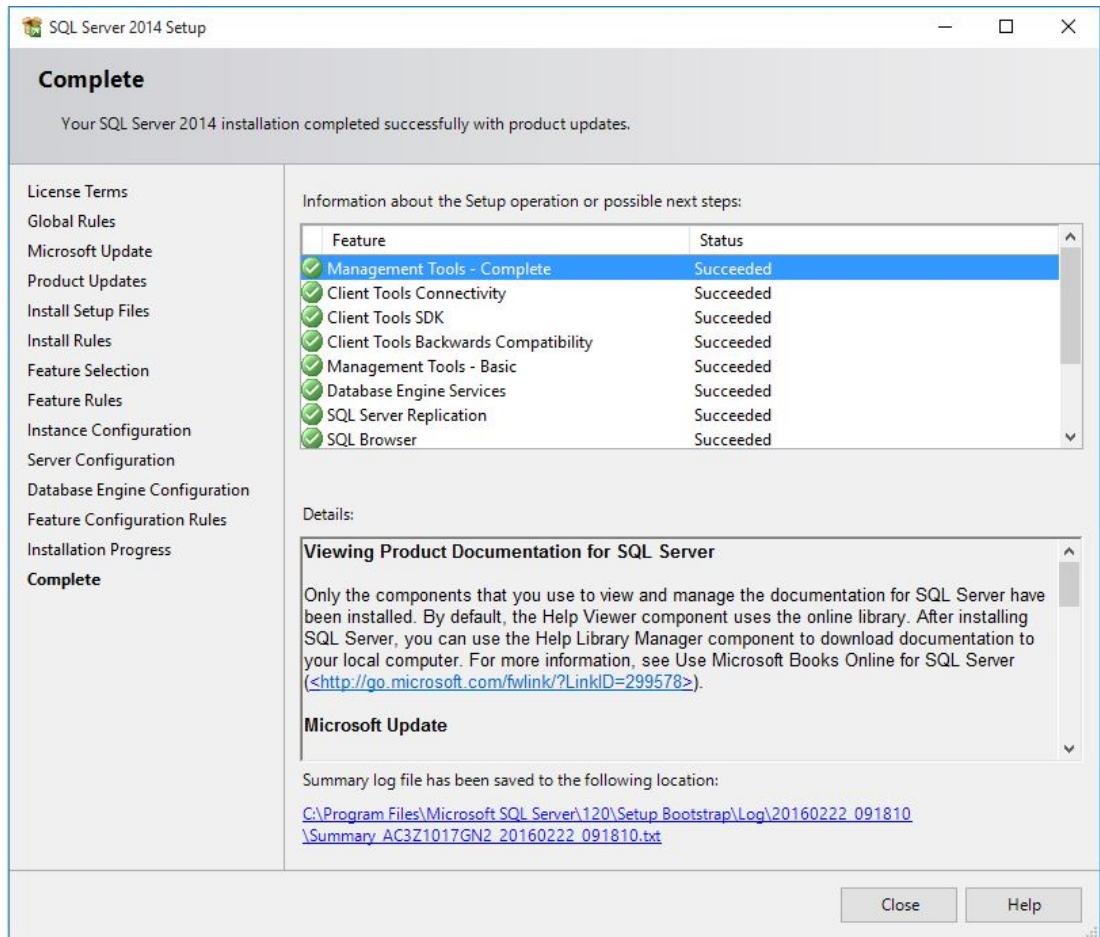


- Select the required **Service Accounts** and click **Next >** to proceed.
- Select **Database Engine Configuration**.



- Select the tab **Server Configuration** and activate the radio button **Windows authentication mode**.
- Click **Next >** to proceed.

Select **Complete** and check the **Status** column for successful installation of all applicable features. This may take a few minutes.



- The installation is now complete. Click **Close** to finish the installation.



Notice!

If the installation fails, please contact the Microsoft customer support.

It is under the responsibility of the end-user of the SQL database:

- To create credentials for the authorization to give access to the SQL database
- To create a backup of the SQL server, as the SQL database backup is not supported by the APE system.
- To manage the SQL security.

3 Installation

In addition to the access control applications **Personnel Management, Configurator** and **Logviewer**, Access Professional Edition Installation also includes a facility for **Alarm Management** and **Video Verification**, and for setting up the **LacSp** (LAC Subprocess) service and the **Card Personalization** automatic background process (if CP is to be installed).

The following applications are also installed and can all be accessed via **Start > Programs > Access Professional Edition**.

The following additional applications are available:

- AMC IP Configuration
- Badge Designer
- Card Personalization Configuration (German and English)
- Card Personalization Interface
- Database Management

3.1 Requirements

For a new installation of the Access PE download the ISO-image file from the Bosch website. Extract the ISO-image or create a DVD to proceed for installation.

If you wish to use video functionality together with the access Professional Edition, you need to install **Bosch Video SDK** from the installation medium (..\3rdParty\BOSCH VideoSDK).

3.2 Beginning the Installation

Before starting the installation please close all other programs. Log in as **Administrator** or use an account which has administrator privileges. Place the installation CD in the CD Drive and begin the installation by double-clicking the file **Access Professional Edition Setup.exe** in the main directory.

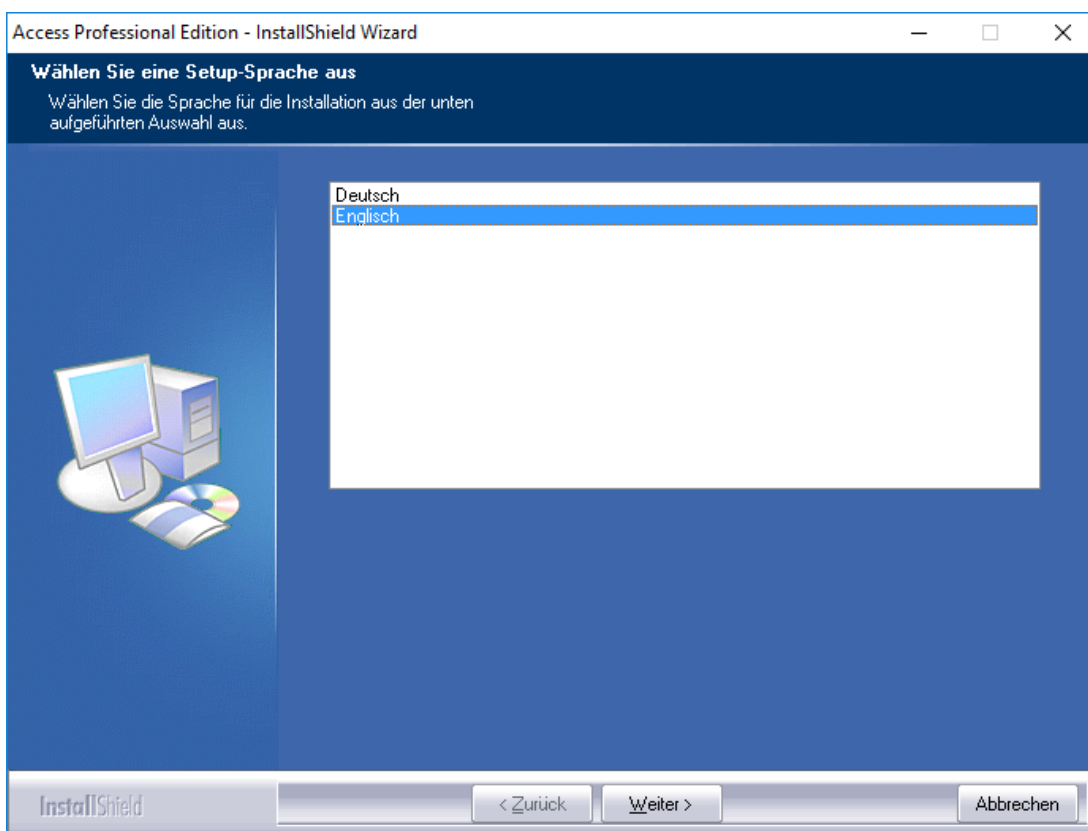


Notice!

The installation and the way it is carried out does not depend on the components ordered for your access control system. All components are installed, and these are either released or blocked by the licensing procedure performed later, see chapter **Licensing**.

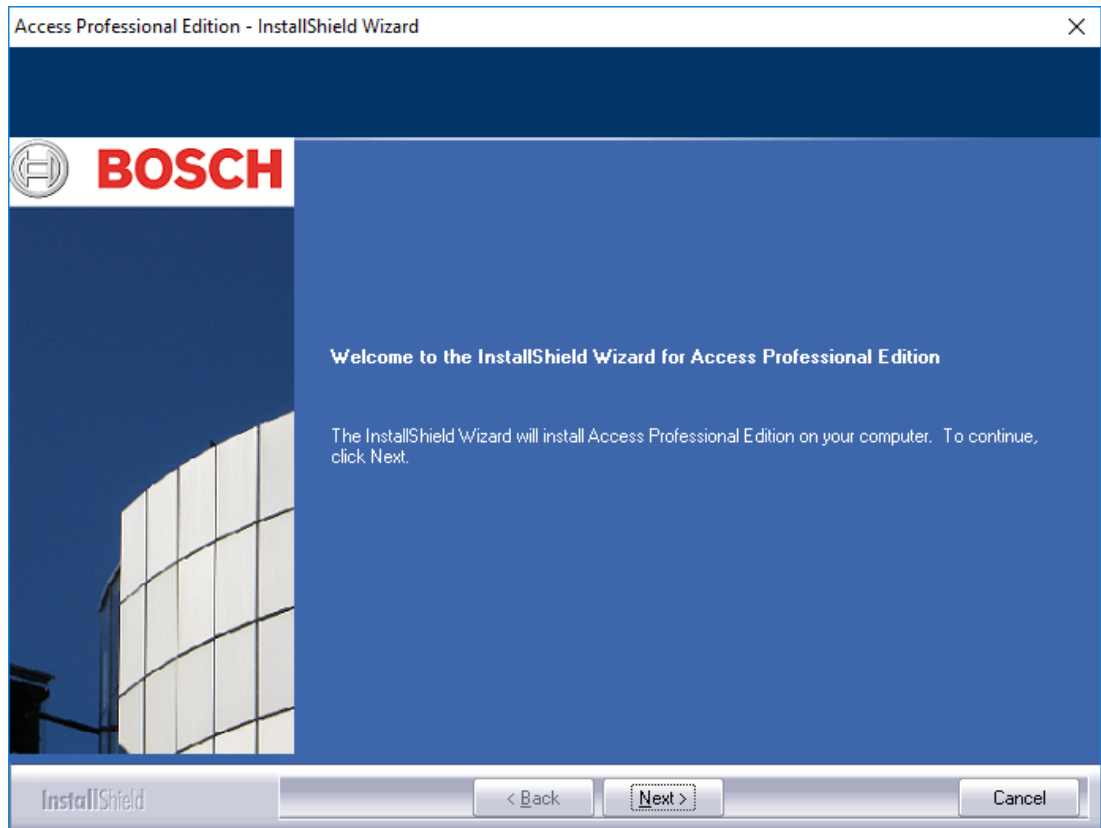
3.3 Language Selection and Preparing

Choose the desired language (English or German) for you installation from the list. Confirm your choice by clicking **OK**.



This selection only relates to the language used in the installation wizard dialogs during installation. It does not affect the languages of applications used later.

After setup the Install Shield wizard will start up in the chosen language. Press **Next**

**Notice!**

If you have chosen for the installation a language other than that of the operating system, it is nevertheless possible that some system elements (particularly button labels) appear in the language of the operating system.

3.4 License Agreement

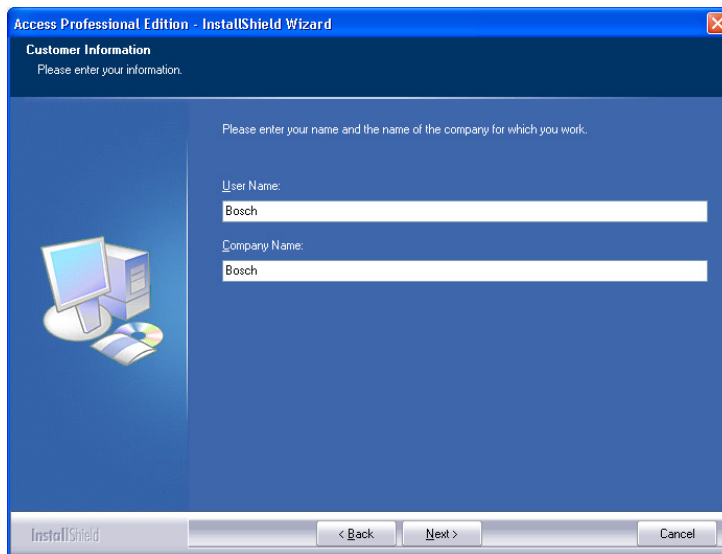
In order to continue the installation it is necessary to accept the terms of the license agreement. Please read these carefully and indicate your acceptance by clicking **I accept the terms of the license agreement**.



Only then will the button **Next** be activated so that the installation can proceed to the next stage.

3.5 Customer Information (server only)

Enter the user and company information in the fields provided. The default values shown are those which were entered during the installation of the operating system.



Access Professional Edition - InstallShield Wizard

Customer Information
Please enter your information.

Please enter your name and the name of the company for which you work.

User Name:
Bosch

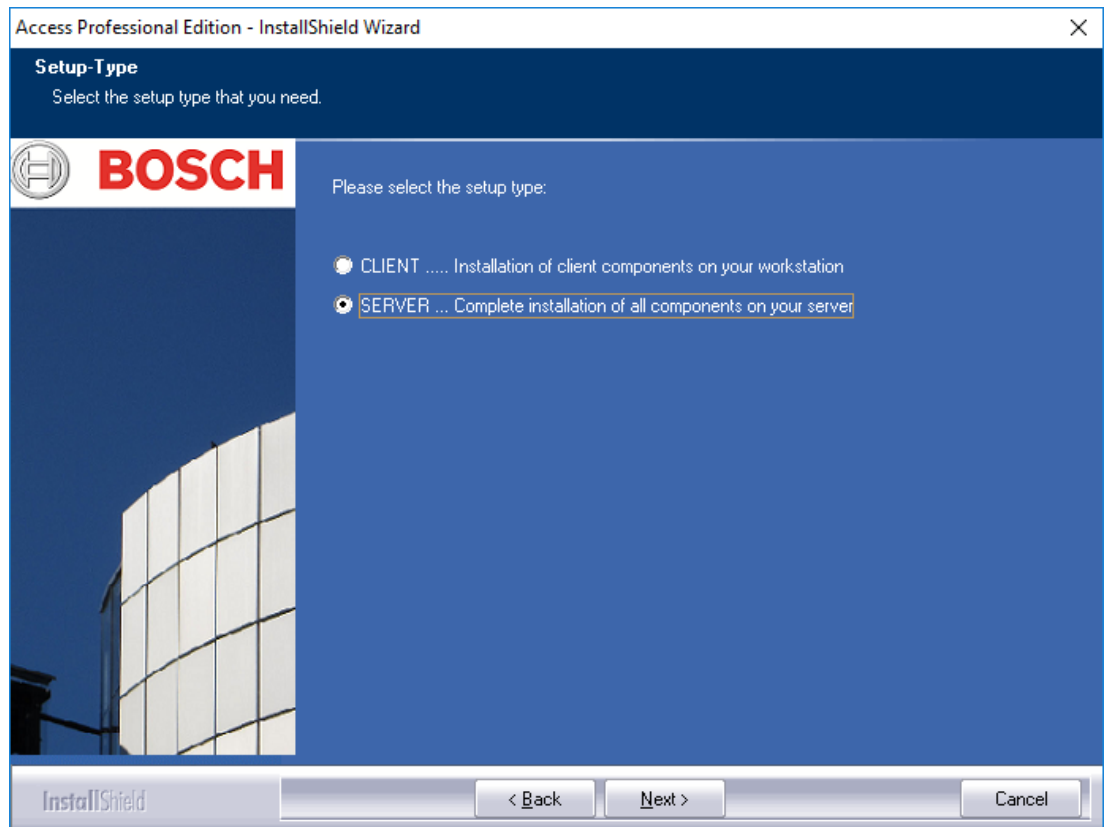
Company Name:
Bosch

InstallShield < Back Next > Cancel

Confirm your entries by clicking **Next**.

3.6 Choosing the type of Installation.

You can choose between **Server** and **Client** type installations.



Confirm your choice by clicking **Next**.



Notice!

Install Access PE on the server first. When installing the clients you need to enter the computer name of the server where the Server component of Access PE has been installed.



Notice!

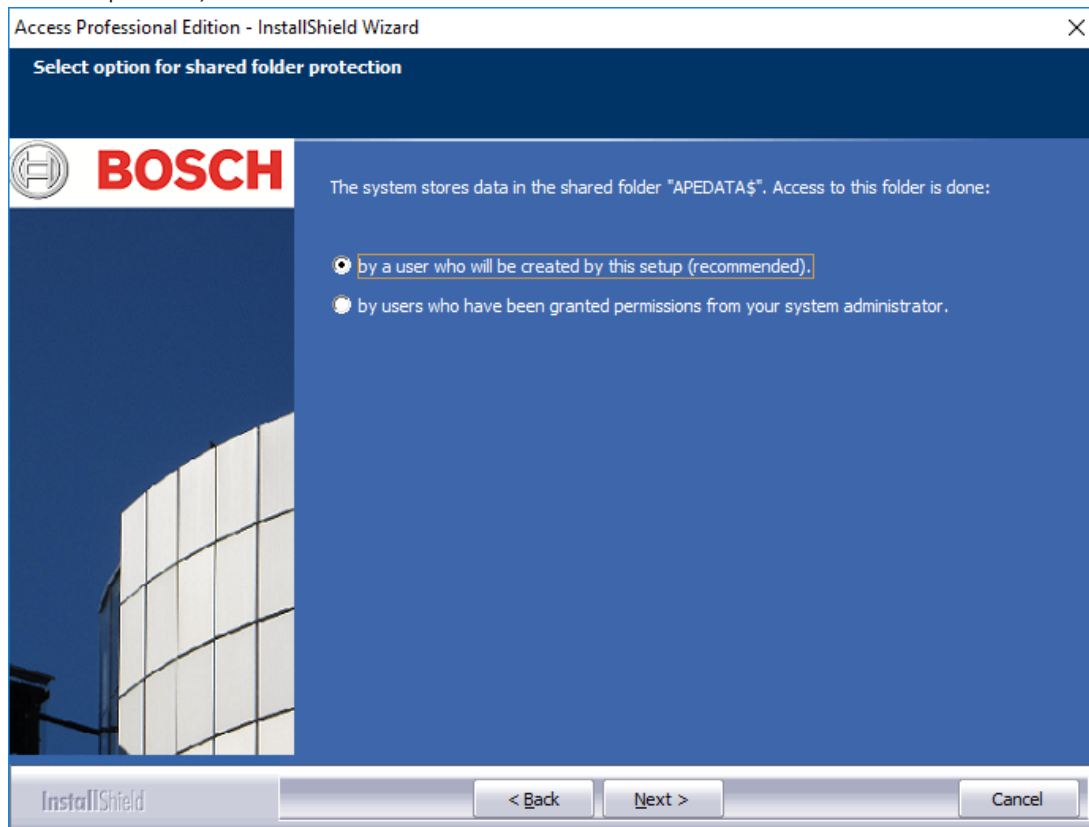
Additional information is necessary for Client installations. Any such divergences from the steps of the Server installation will be described at the appropriate points in this guide.

3.6.1

Shared Folder Protection

The client needs access to the shared folder named APEDATA\$. There are two options which can be selected via radio buttons:

- Access by a user who will be created by the setup. This option is recommended.
- Access by users who have been granted permission from the system administrator (see Chapter 4.2).

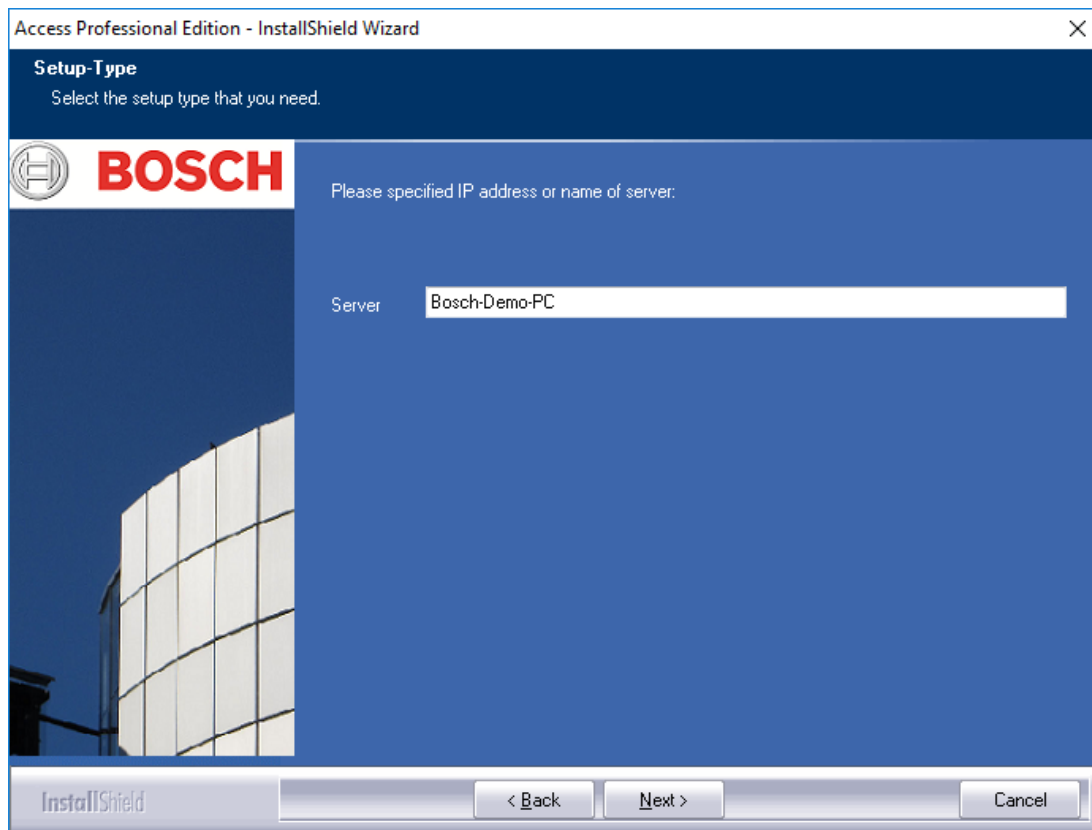


Make your selection and click **Next** to continue.

3.6.2

Entering the Server for Client installations

If you have chosen **Client** installation, you will first need to enter the computer name of the Server to which the Client will connect, and on which Access PE has already been installed.



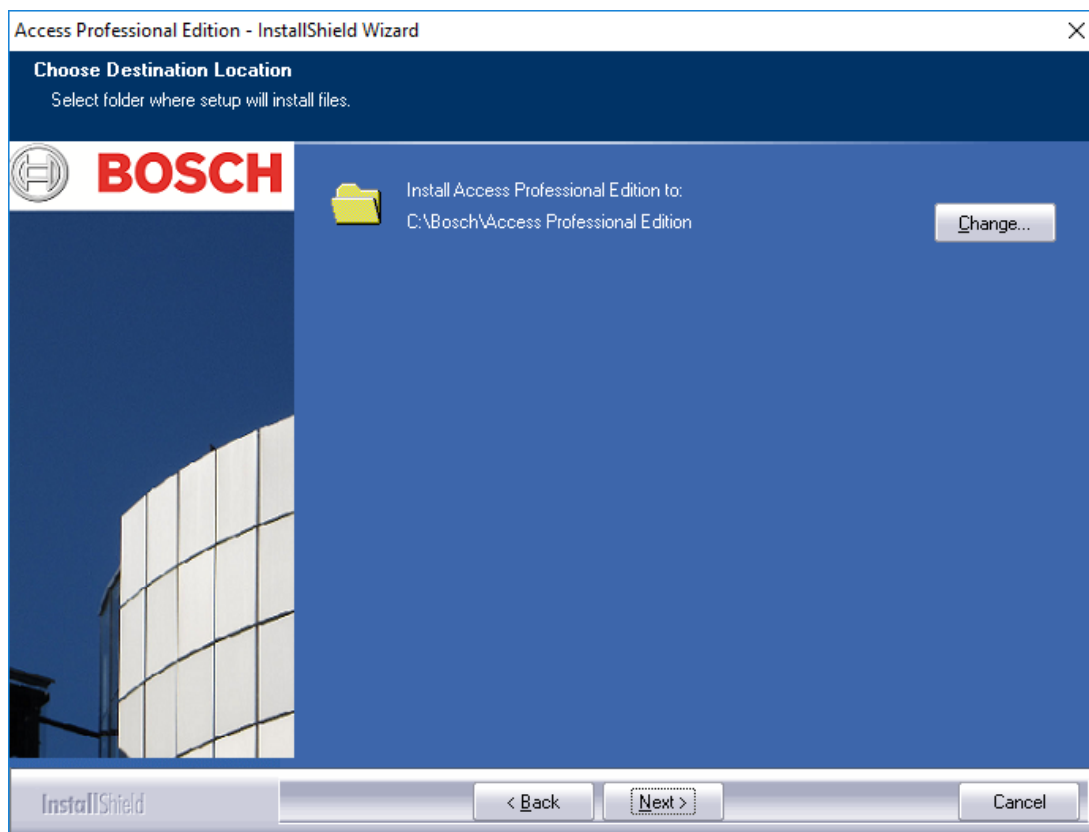
Confirm your input by clicking **Next**.

3.7 Choosing the installation path

Choose the directory where the Access PE files are to be installed. The default path is on the C-partition of your computer. The various components are located in the following directory structure:

C:\BOSCH\Access Professional Edition

The subdirectories **CP** and **PE** contain the files for Card Personalization, and access control respectively.



Confirm your choice by clicking **Next**.

3.8 Choosing Components

According to the default settings all components are installed on the server. By clearing the relevant check-box you can exclude individual components from the installation.

The following components are available:

Configurator

Installs the Configurator program, for setting up devices and systems, with a link on the desktop and in the Personnel Management dialog. These components should be installed at least on the server. They can however be executed from any client.

Personnel Management

Installs the dialogs for Personnel Administration.

Alarm Management

Installs the components required for the handling of alarms.

Video Verification

Installs the components required for using video verification.

Log Viewer

Installs the application for log book evaluation including a link on the desktop and in the Personnel Management dialog.

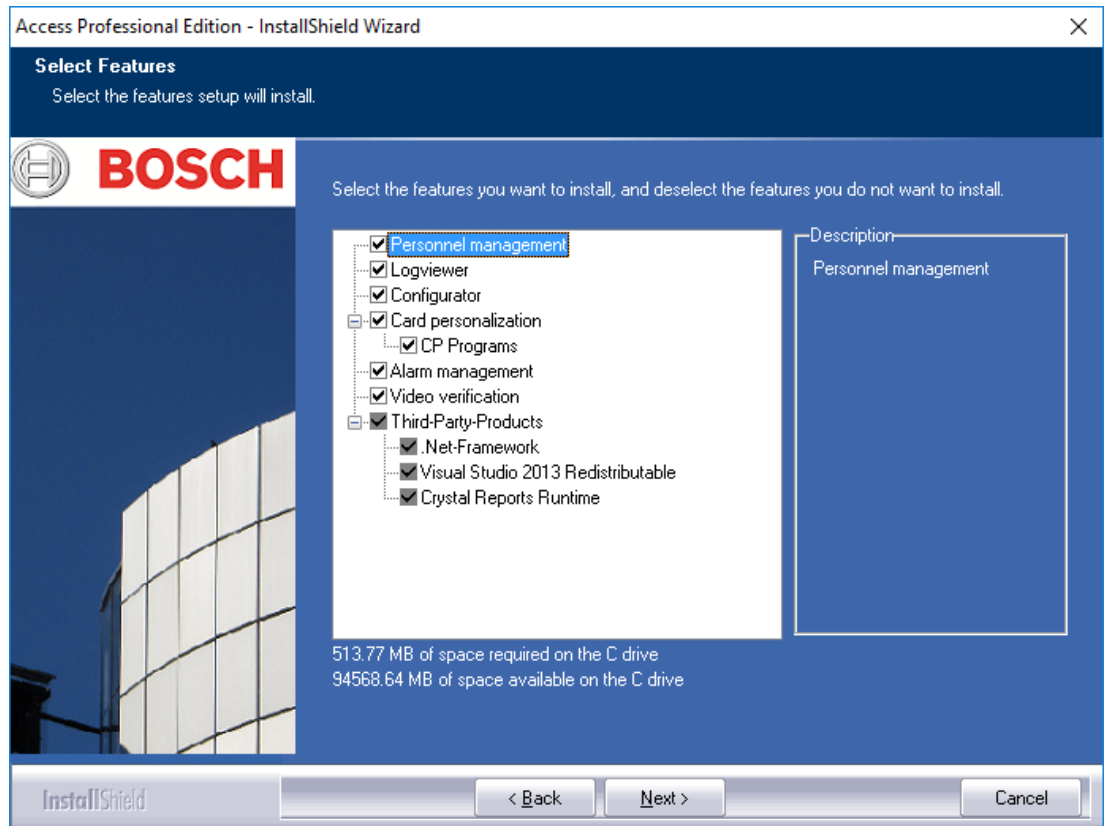
Card Personalization

Installs the Card Personalization application in the CP folder. Functions for card processing (e.g. importing pictures, printing receipts) can only be executed if the badge designer program is installed and running.



Notice!

It is recommended that you install all components on the server, so that in the case of network problems between Server and Clients there is always one computer from which these tasks can be performed.



Confirm your choice by clicking **Next**.

3.8.1

Client Installation

The component **Configurator** is deselected by default in the components for Client installation.



The **Configurator** can be installed on any client so that configuration changes do not have to be carried out on the Server.

Confirm your choice by clicking **Next**.



Notice!

If not yet existing, 3rd party products will be installed.

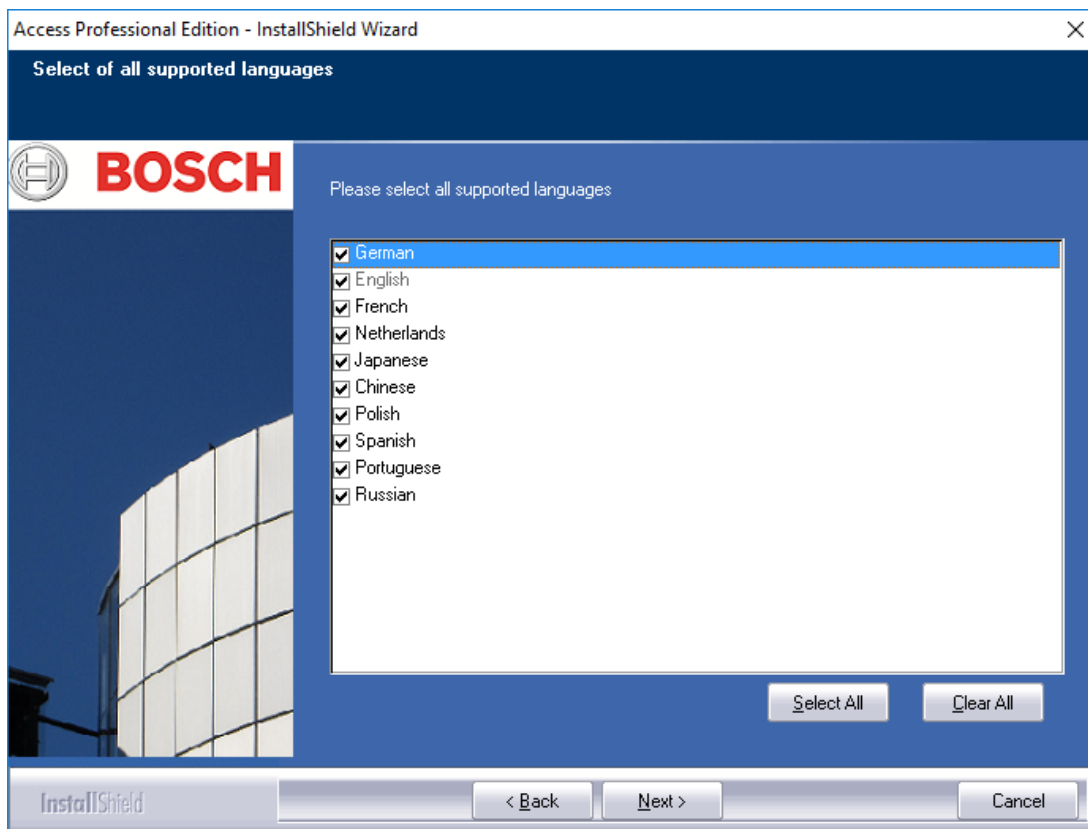


Notice!

Before installing a Client, the administrator must complete the Server installation and then authorize the Client for installation. This is done in the **Configurator** menu under **Settings > Client activation**.

3.9 Selecting supported languages

Select from the list of available languages those which the user-interface should offer.



By default all available languages are selected, however individual languages can be excluded from your installation by clearing the appropriate check-box.



Notice!

English is always installed and the selection can not be cleared. This is to provide technical support access in cases where, for example, only East Asian languages have been installed.

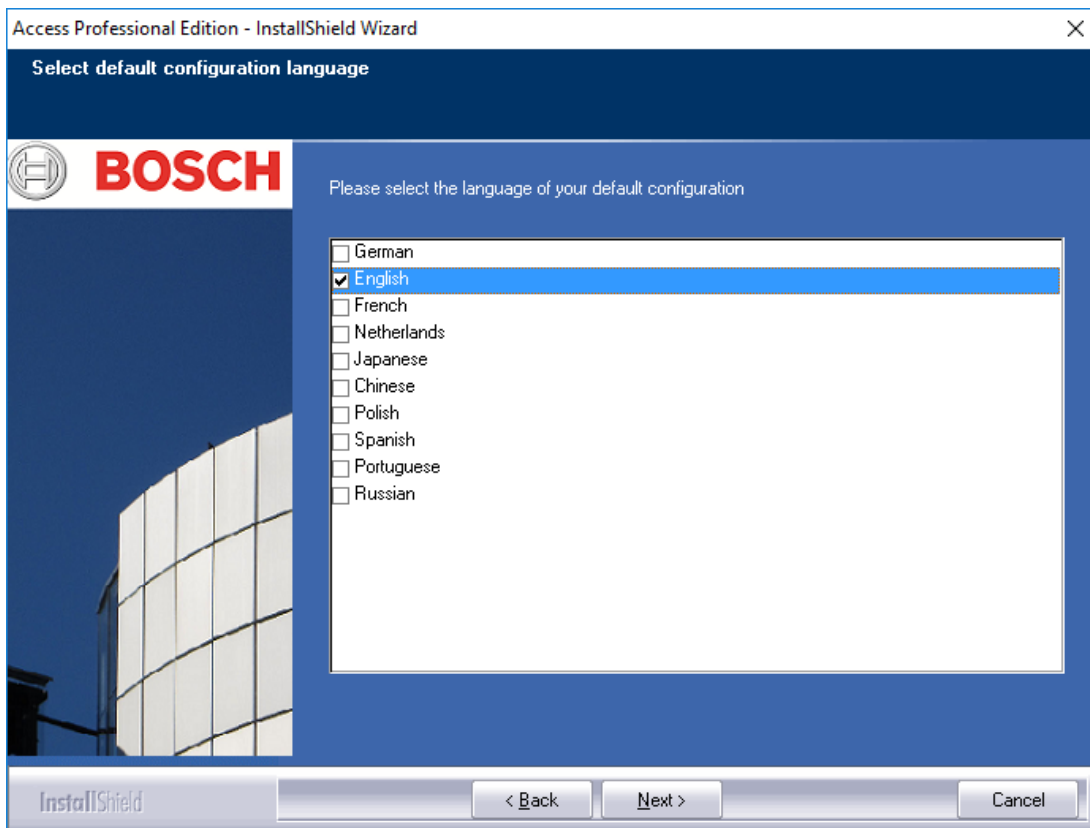
Languages thus installed can be selected in the login dialogs of the applications in order to display the user-interface in the desired language.

To retrospectively change the language selection you make here, you must uninstall the Access PE software and then reinstall it.

Click **Next** when you have made your choice of languages.

3.10 Default configuration language (server only)

Predefined configuration data (including public holidays) are available, in principle, in all of the languages listed here. Select the language in which these configuration data are to be loaded and maintained.

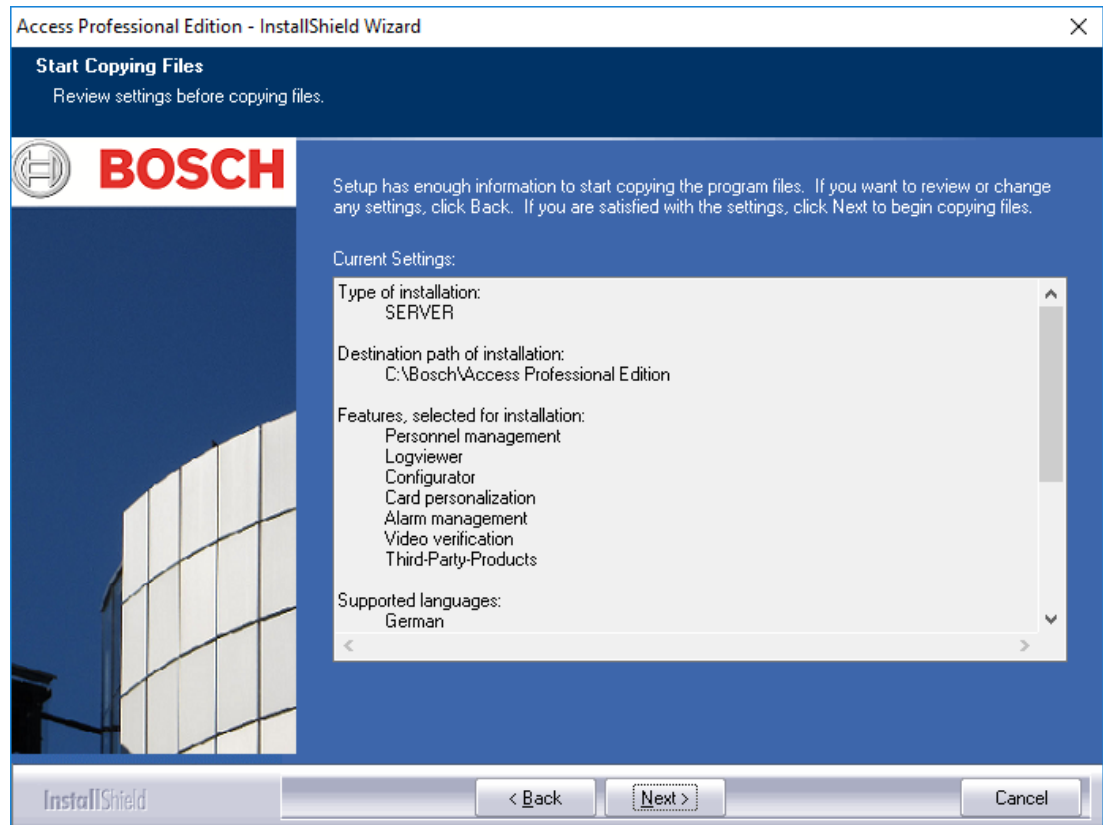


The default configuration language is, like the installation language, the language of the operating system. Nevertheless any listed language can be selected. As only one default configuration language is possible the check-box for the default language will be cleared whenever a different language is selected.

3.11 Confirming Choices

The information entered up to now can be re-examined here and changed or confirmed as required.

Changes can be made via the **Back** button, which can recall the last and all previous dialog screens.

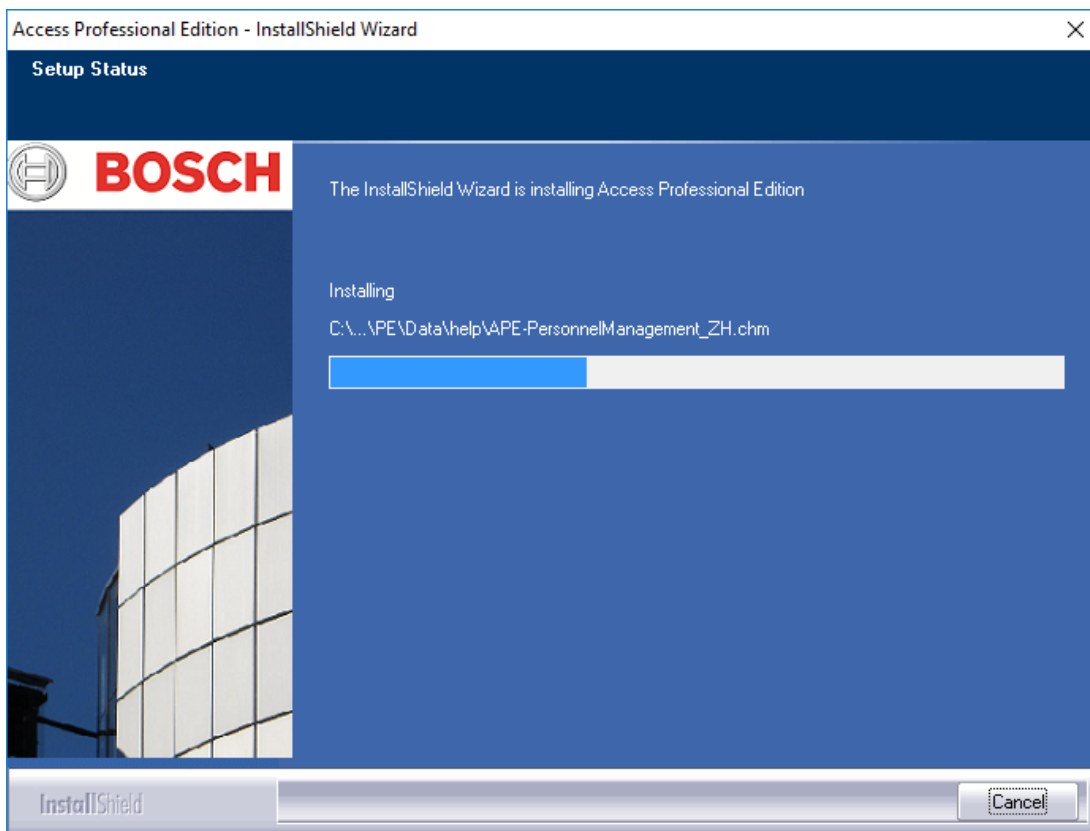


In order to check all settings it may be necessary to scroll down the list. The illustration below shows a full list of choices.

Confirm your choice by clicking **Next** if all settings are satisfactory.

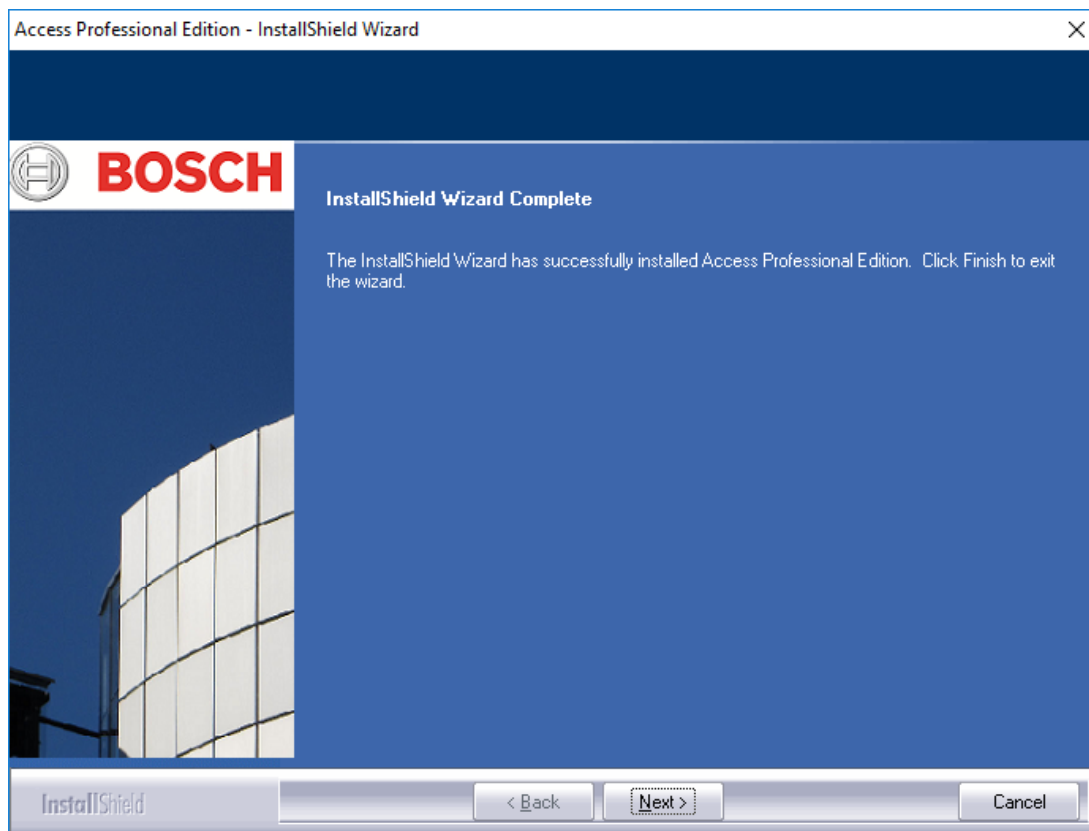
3.12 Setup Status

The actual installation process begins now. Its status can be tracked via the progress bar displayed.



3.13 Installation completed

The installation is complete and the Install Shield Wizard can be closed. To do this click **Finish**.



Notice!

Check if the hard disk `...:\BOSCH\Access Professional Edition\PE\Data` is released under the shared name **APEData\$**. If necessary, have this set manually by your system Administrator.

4 Product usage

At the time of installation, default and sample data was also created for Access PE; this can help when you are setting up the system. This preinstalled data makes it possible for a user to log on and make changes.

Nevertheless, it is necessary to configure a few settings before you can use the system in the way and to the extent you require. The following sections describe the details regarding the definitive implementation.

4.1 Licensing

Once you have installed the Access PE software, you will only have limited access to the applications until you activate your licenses. Installation enables Access PE components to be used in demo mode. In addition to the standard components:

- Configurator
- Personnel Management
- Alarm Management
- Video Verification
- Log Viewer

this includes the release of the following facilities:

- 1 workstation
- 400 cards
- 2 AMCs
- 8 readers
- 2 cameras

In order to operate and use the software according to the scope of your order, you must activate the licenses you have purchased.

4.1.1 License packages and their content

License name	SAP no.	CTN
	Functionality provided	
Access PE – Basic License	F.01U.298.461	ASL-APE3P-BASE
	Enabling the standard Access PE components: Personnel Management, Configurator, Logviewer, Card personalization 1 workstation = one user logged on 16 readers 2000 cards	
Access PE – Extended License	F.01U.298.462	ASL-APE3P-BEXT
	Enabling the standard Access PE components: Personnel Management, Configurator, Logviewer, Card personalization 2 workstations = two users logged on at the same time 64 readers 10,000 cards	
You must order one of these two licenses; otherwise, you will not be able to use the following extension options.		
Access PE – Reader Expansion License	F.01U.298.463	ASL-APE3P-RDR
	16 additional readers You can also purchase several of these licenses up to the maximum of 128 readers.	
Access PE – Client Expansion License	F.01U.298.464	ASL-APE3P-CLI
	1 further workstation = one user logged on You can also purchase several of these licenses up to the maximum of 16 workstations.	
Access PE – Video Activation License	F.01U.298.465	ASL-APE3P-VIDB
	Enabling the video components. 16 channels	

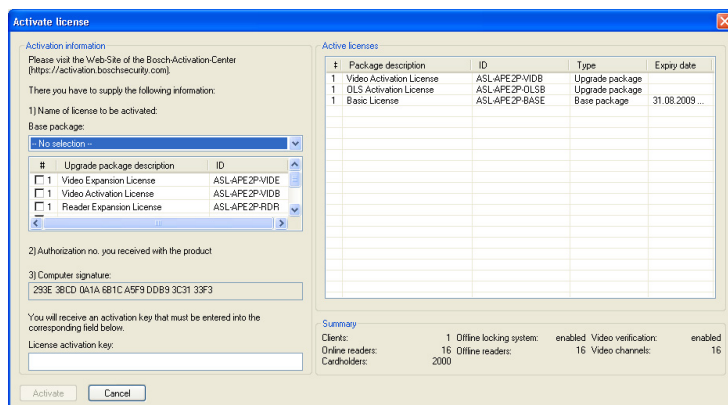
License name	SAP no.	CTN
Functionality provided		
Access PE – Video Expansion License	F.01U.298.466	ASL-APE3P-VIDE
16 further channels You can also purchase several of these licenses up to the maximum of 128 cameras.		
Access PE – OLS Activation License	F.01U.298.467	ASL-APE3P-OLSB
Enabling the offline locking system. 16 doors		
Access PE – OLS Expansion License	F.01U.298.468	ASL-APE3P-OLSE
1 further door You can also purchase several of these licenses.		
Access PE – Reader Limit up to 512 readers	F.01U.298.469	ASL-APE2P-RDRL
Extends APE to a maximum number of 512 readers.		

4.1.2 Activating licenses

There are two steps to activating a license:

1. Activating the base package.
2. Activating all purchased extensions.

The base packages are ASL-APE2P-BASE and ASL-APE2P-BEXT - all other software components are extensions.



To activate the software licenses, proceed as follows:

- Start the Access PE Configurator.
-
- Select **Configuration > License activation...** from the menu to open the activation dialog.
- In the activation dialog...
 - ... select the appropriate **base package** from the selection list under no. 1 the **first** time you activate the license and skip point **b.** in this list.
 - (the **second** time you activate the license, do not select a base package) ... select the extension and additional packages you have purchased by clicking the checkbox for the corresponding list entry from the list field (more than one selection is possible). If you have bought several packages of the same type, click again in the corresponding field in the # column to activate write mode and adjust the number to the actual number of purchased licenses.
 - Have the authorization no. (2 – Authorization no.) you have received.
 - Copy or manually input the computer signature—shown in field 3 of the dialog—to a text file.
- If necessary, switch to a computer with Internet access and start the browser.
 - Enter the following URL in the address bar:
https://activation.boschsecurity.com
 - If you do not have an access account for the Bosch License Activation Center, you have two options: Create a new account (recommended) or click the link to activate the new license without registering.
 - If you do so, the support personnel cannot recover your activations if they get lost. If you create an account and register before activation, the License Manager records your activations. You can display this log at any time.
 - Follow the instructions for retrieving the license activation key.
- Switch to the Access PE activation dialog and enter the activation key you retrieved from the License Manager in the bottom field.

-
- Complete your inputs by clicking **Activate**.
The activated software package appears in the right-hand list box (**Active licenses**) and the activated components appear in the **Summary** area below the list box.
-

**Notice!**

If during use of the access control system the limits set by the licenses are exceeded, then a license-violation message will appear every time the configurator is opened, and every time configuration data are saved.

4.2 Setting Server access rights

Per default the Client access to the Server data (PE > Data) is handled through the **ApeUser**. This user is created during the installation. ApeUser is a local, hidden user and has no rights for local logon. The password must not be changed and never expires. If a password was modified and has to be repaired, the Administrator has to use the repair function of the Installation. (See chapter 5.2.1).

In case of customer site restrictions which prevent the ApeUser to be installed, the Administrator has to manage the access rights in the domain. Using the repair function of the Installation the Administrator can prevent the ApeUser from being installed.

The Administrator then has to assign the access rights for the folder **C:\BOSCH\Access Professional Edition\PE\Data** to the individual client users manually.

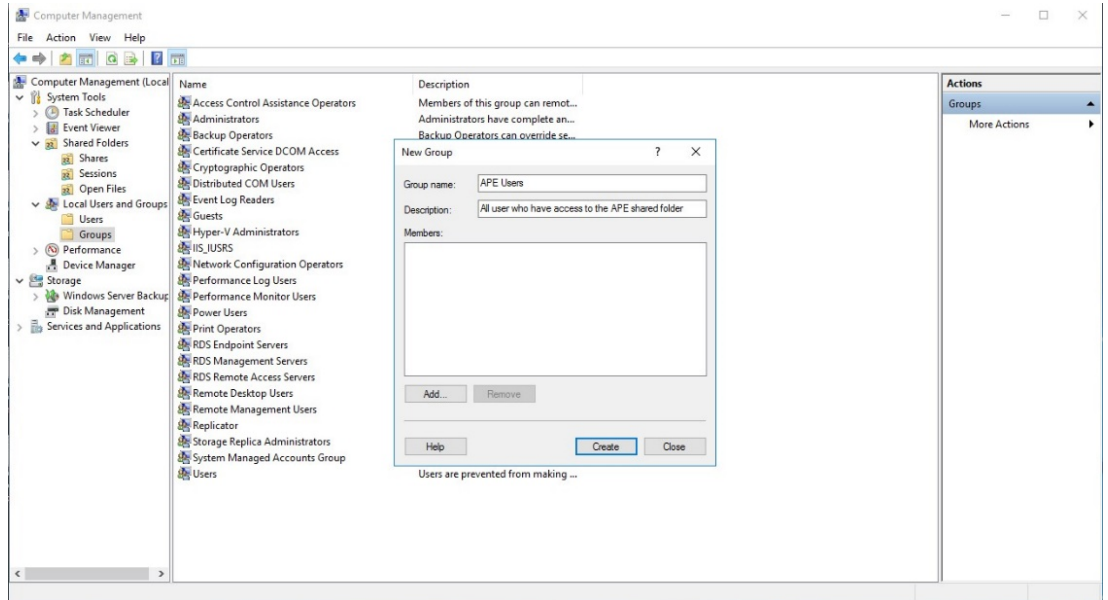


Notice!

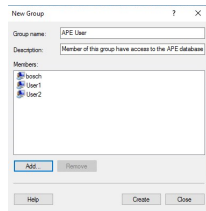
The Administrator is responsible for the assignment of the access rights.

The following example shows how to configure the user access rights under Windows 2016. It looks similar on other operating systems.

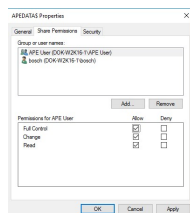
- Open Windows Computer management
 - Expand **Local Users and Groups**
 - Select **Groups**
 - Add a new group **APE Users**



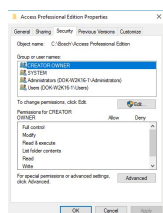
- Into this group add all users who should have access to the APE database:



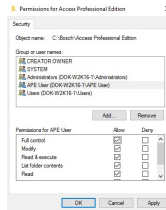
- In the Computer Management select **Shared Folders > Shares**
 - Right click Share Name APEDATA\$, open **Properties**
 - Select Tab **Share permissions**
 - Add group **APE User** and grant permission **Full Control**



- Click **Apply > OK** to confirm and navigate to the installation path.
 - Select the folder **Access Professional Edition**.
 - Right-click **Properties** and select the tab **Security**.



Press the **Edit** button and add the group **APE User** with **Full control** permission.



Click **Apply** to confirm.

4.3 Changing the backdrop

The backdrop for the **Personnel Management** and **Video Verification** dialogs is set by the installation procedure to the general start screen.

This backdrop can be replaced by any jpg file, for instance one showing a floor-plan.

To do this first open the file **Client.ini** in the directory **C:\BOSCH\Access Professional Edition\PE\Data\Cfg** with the text editor of your choice.

Change the entry **MapImage=BOSCH_WorldMap** (line 28) so that the path to the desired jpg file appears after the equals sign - e.g. C:\BOSCH\MyImage.jpg.



Notice!

These jpg backdrops are simple images and do not support control elements for user interaction.

4.4 Language settings

Ideally only those languages are used in Access PE which are compatible with the language of the operating system, e.g. under a German operating system only Western European languages.

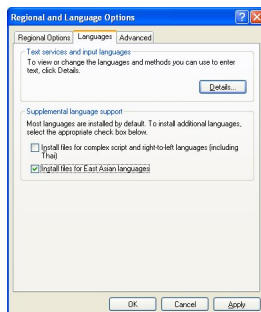
If it should prove necessary to install languages in Access PE which do not correspond to the operating system, e.g. Chinese under a German operating system, then the following settings need to be made. We demonstrate the individual steps here using the example of Chinese.

Invoke the **Regional and Language Options** dialog under:

Start > Settings > Control Panel

Install additional languages

Open the **Languages** tab, and select in the **Supplemental language support** field the language group to which the desired language belongs.



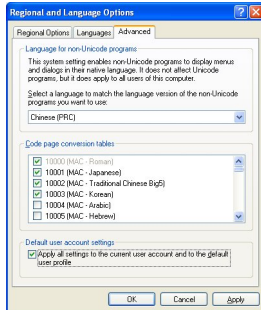
In the case of Chinese the appropriate option is **Install files for East Asian languages**.



Notice!

During the installation you will be required to insert the installation CD for the operating system. Continue with this installation only if the operating system CD is available to you.

Click the **Advanced** tab and select from the upper combo-box (**Select a language to match the language version of the non-Unicode programs you want to use**) the appropriate entry. In our example this is Chinese (PRC). In addition, check the box marked **Apply all settings to the current user account and the default user profile** at the lower edge of the dialog.

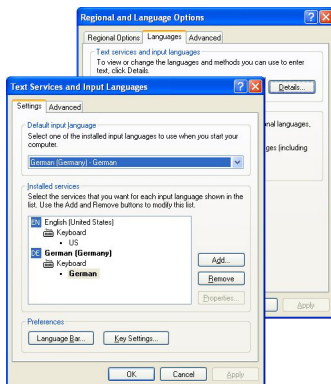


When these settings have been applied you will need to read and confirm various message boxes before being invited to restart the computer. Restart the computer. After restarting log into an Access PE application and select, for example, Chinese as your language. All dialogs and menus should now contain the appropriate characters.

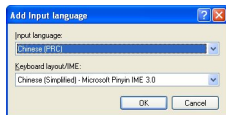
Keyboard settings

If the additional language is to be entered as well as read, then further steps are necessary in addition to the settings described above.

On the **Languages** tab in the field **Text services and input languages** click the button **Details...** This will open a further dialog containing keyboard settings.



In the list field **Installed Services** click **Add...** to install further keyboard layouts.



Choose from the combo-box **Input language** the desired language and, if available, the desired **keyboard layout** and click **OK**.






The list of keyboard layouts will be visible in the task bar alongside the icons representing running programs.



Change the keyboard layout by selecting the desired list entry.

4.5 Configuring the system to your needs

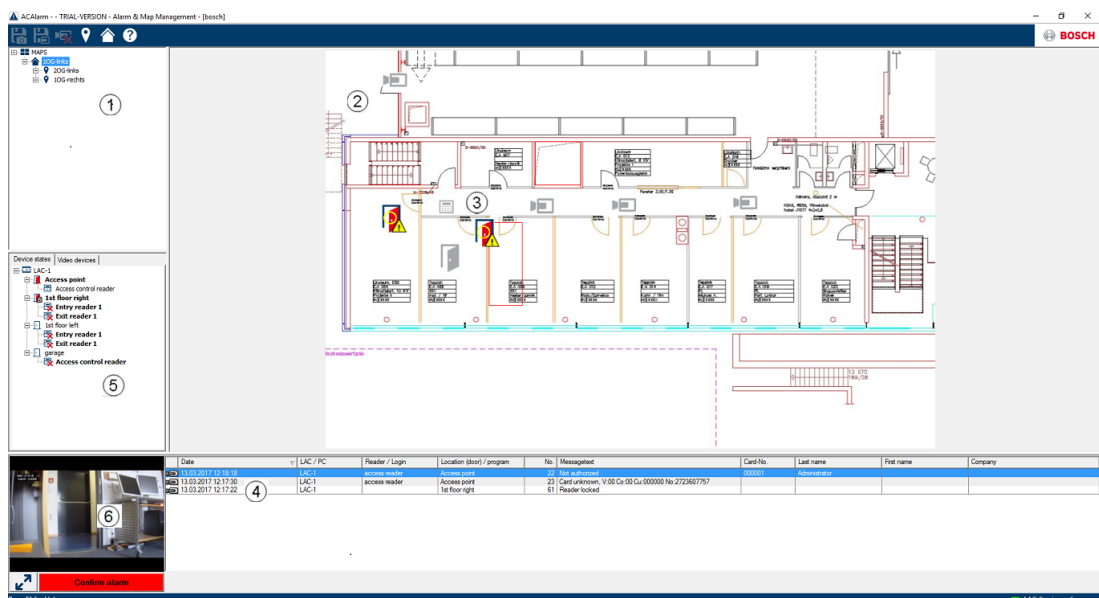
Before your system can enter production usage, it needs to be configured with personnel and location-specific data. The following applications are available for this purpose, and may be invoked via Start > Programs > Access Professional Edition. For further details, please refer to the online help within the individual applications

Icon	Application	Description
	Personnel Management	For creating and administering personnel data.
	Badge Designer	For designing and creating badge layouts.
	Configurator	For configuring system data.
	AMC IP Configuration	
	Card Personalization Configuration	

4.6 Map Viewer and Alarm Management

The Access PE Map Viewer enables to control devices as entrances, readers, cameras directly from a map.

The Access PE alarm list shows all incoming alarms to the operator. Alarms can be accepted by the operator. In case of an alarm, the location map will be displayed. The icon of the device that triggered the alarm is highlighted by animation. Related video live views are shown to verify the alarm.



1. Map tree
2. Active location map
3. Device control from the map; controls are shown in the map
4. Alarm list with event information (incl. video)
5. Device tree with status overview and control elements

6. Live Image

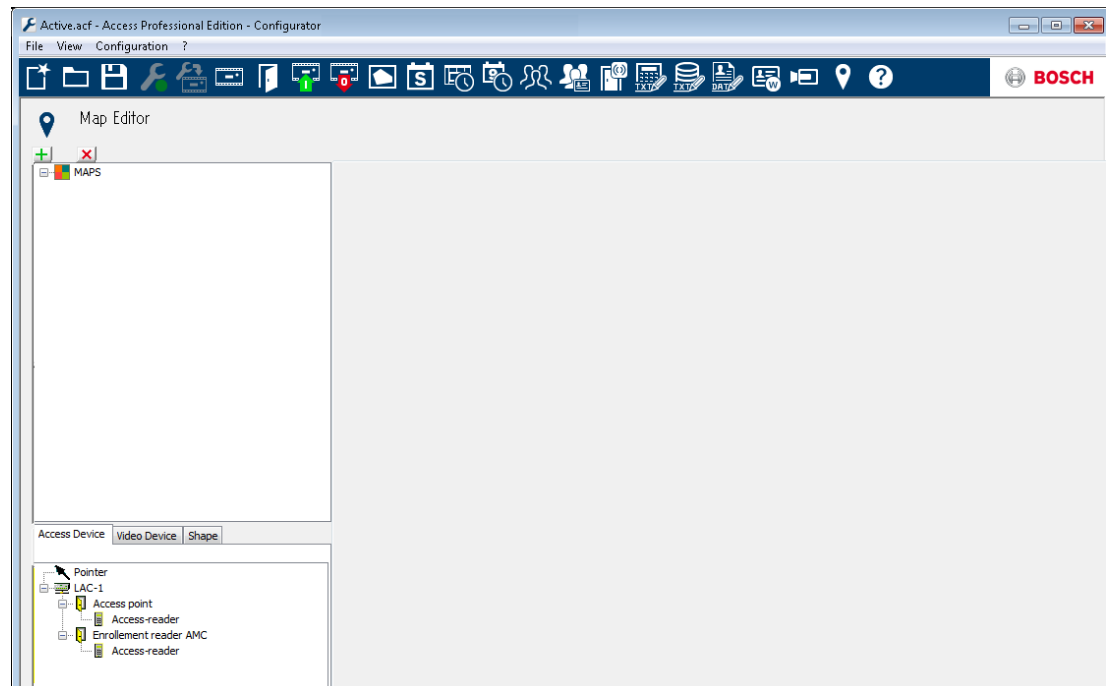
Mapviewer features:

- Home map for easy navigation
- Navigation between photo views and floor plans via hyperlink
- Navigation via device tree structure up to three levels
- Interactive Graphical Maps for alarms with integrated alarm list
- Live view and door control from the map and device tree
- 128 maps per system
- 64 devices per map
- 64 hyperlinks per map
- Max 2 MB per map
- Map viewer use a standard image format .bmp, .jpg, .png

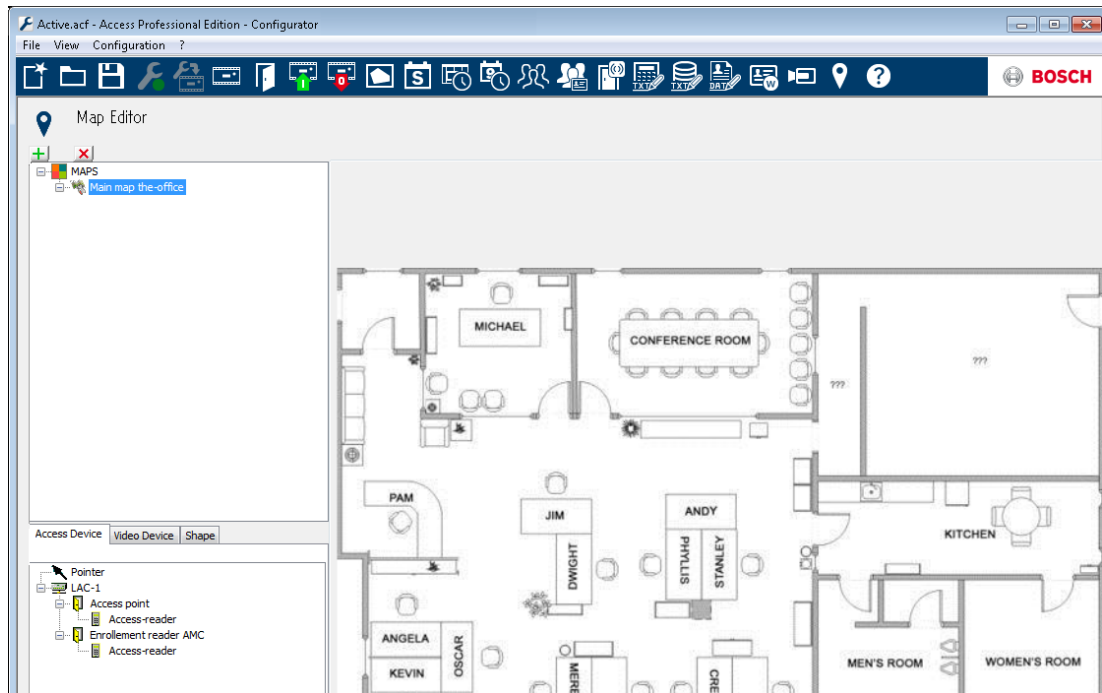
4.6.1

Configuring a map

Start the Map Editor



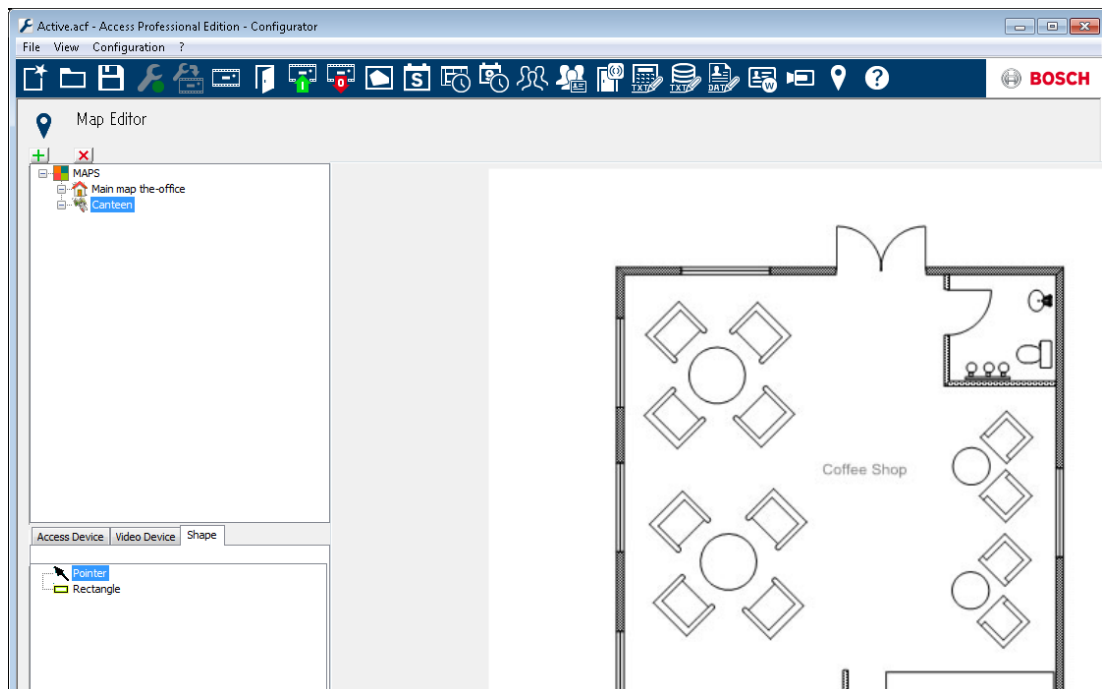
Klick the  button to add a map.



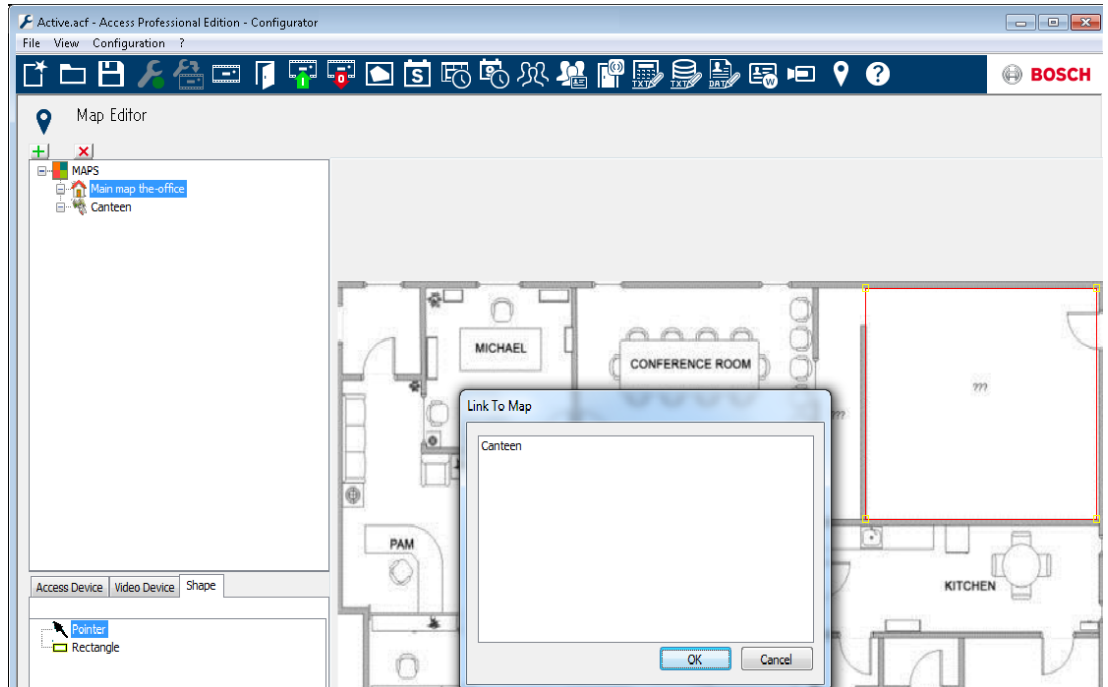
The map is shown on the dialog.

- Optionally configure this map as **Home Map**

Add a detail view, e.g. the canteen, to the map tree.



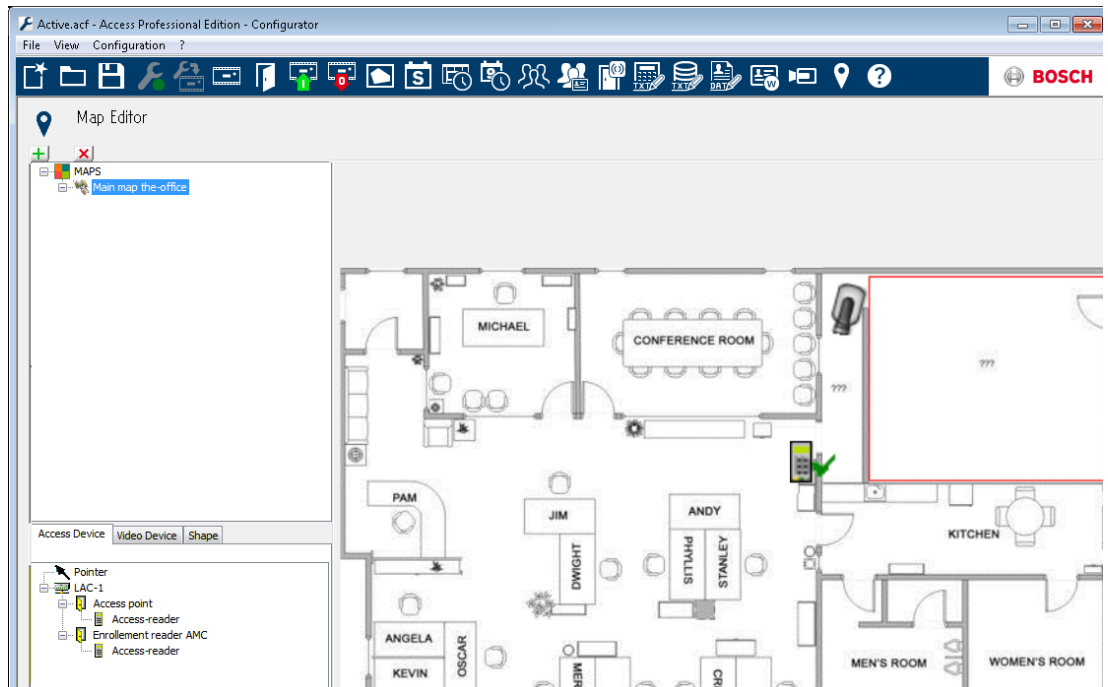
- To connect the new **Canteen map** with the main map, go to the **Shape Tab** and select a **Rectangle**.
- Place the rectangle over the area of the main map that should be shown as a detail view (shown as a red rectangle in the example below).
- In the **Link to Map Display** select the respective detail view, which is “Canteen” in this example.






4.6.2 Adding a device to a map




Select the **Device Tab** and add Devices to the map by pulling them with the mouse into the map. In the example below the following devices have been added:

- One Access point
- One Reader
- Two Cameras



- Click a device in the map and resize by holding the mouse button pressed,
- Click a device and rotate as required using the scroll wheel of your mouse.

Device Types	Control elements
	Door
	Reader
	Camera

Device Types	Alarms
Access Point (Entrance)	
	Door opened without authorization
	Door opened too long
	(All Reader alarm also reflect as Entrance Alarm*)
Reader	Reader error
	
Camera	N.A.

*) These alarm events can be customized by the user. That means, a user can configure any event as an alarm event using **AcConfig -> Event Log** message (Double click on second column will cause an alarm).

4.7

X-Protect Integration

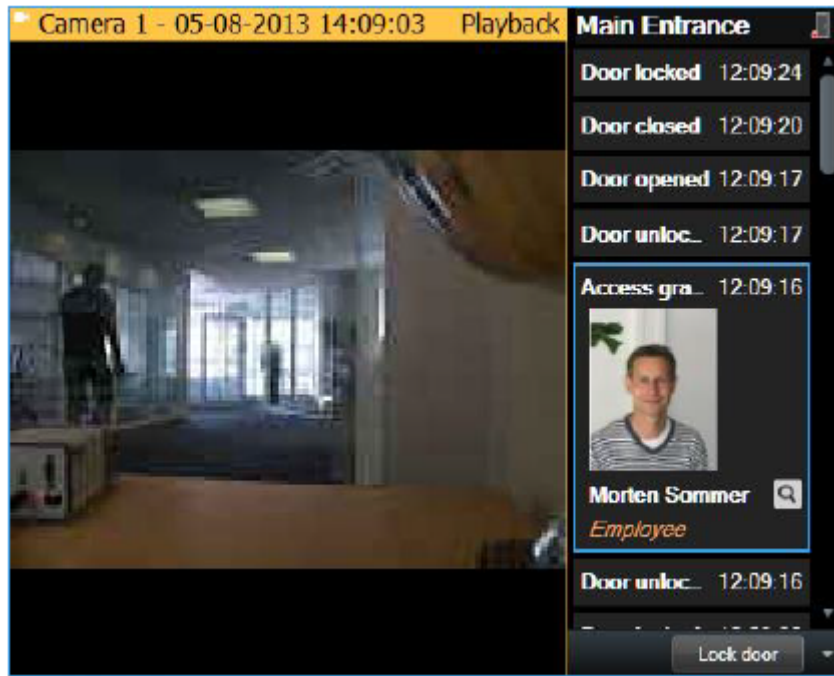
The Access PE can be interfaced with the video management system X-Protect from the company Milestone. Access control and video related features will be subject in the integration between products.

Following integration features can be set up between both products:

- Entrance monitoring with simultaneous live view and instant playback
- Video verification via the X-Protect dialogs incl. cardholder details
- Map Viewer with entrance control and device status
- Alarm management with integrated access alarm, maps and video verification
- History event log with correlated video footage and card holder details

Access control management will remain to be operated through Access PE in integrated set-up.

Video management and security management will handled through via the X-Protect system. In the integrated set-up the Map Viewer, video features and alarm list will be disabled in the Access PE.



5 Deinstallation - Reinstallation

If a reinstallation becomes necessary (e.g. due to a product update) the existing version should first be deinstalled. During the deinstallation process you will be invited to perform a database export. This export is to ensure that your entire data is saved. Your data is saved to your installation folder in the subfolder **\Savedata**. During the following reinstallation you will be invited before completion to perform a database import. This re-import restores all the data from your previous installation. If required by new product functionality, the Export/Import option also supports the simultaneous conversion of your data to a new format.

5.1 Backup and Restore

Backup

For an entire system Backup of all configuration and user data the directory **...\BOSCH\Access Professional Edition\PE\Data** must be save manually or by using a respective backup tool.

Restore

For a Restore the directory **...\BOSCH\Access Professional Edition\PE\Data** must be replaced by the previously saved directory with the same name.

5.2

Deinstallation

**Notice!**

Before beginning the deinstallation you should close all **Access PE applications**.

This includes the card personalization program and the Windows Service LAC-Service.

5.2.1

Windows Software

To deinstall Access PE open the Windows dialog box via **Start > Settings > Control Panel > Add or Remove programs**.

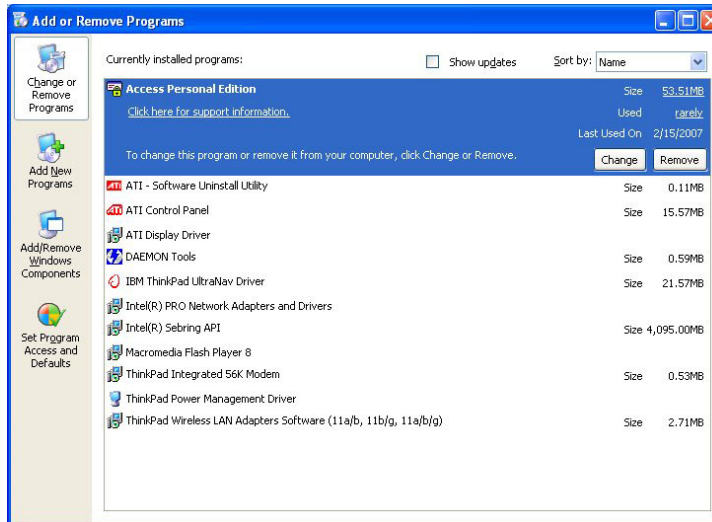


Figure 5.1: Deinstallation - Windows Software dialog

Select the list entry **Access Personal Edition** or **Access Professional Edition** and then click **Change or Remove**.

Whereas the **Remove** function after initializing (see *Initialization, page 57*) invites you to confirm your intention, the **Change** function first presents a dialog box with various options.

- Modify** You can add program components or remove existing ones.
- Repair** All program components will be re-installed.
- Remove** All program components will be removed.



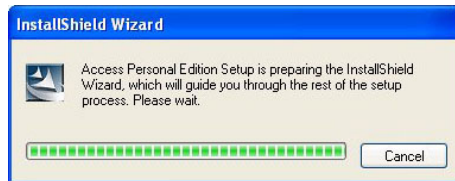
Notice!

You can also execute an earlier or new **Setup.exe**. The application recognizes an existing installation and offers, like the **Change** option, the alternatives listed above.

5.2.2

Initialization

As with Installation the Deinstallation first initializes.



5.2.3

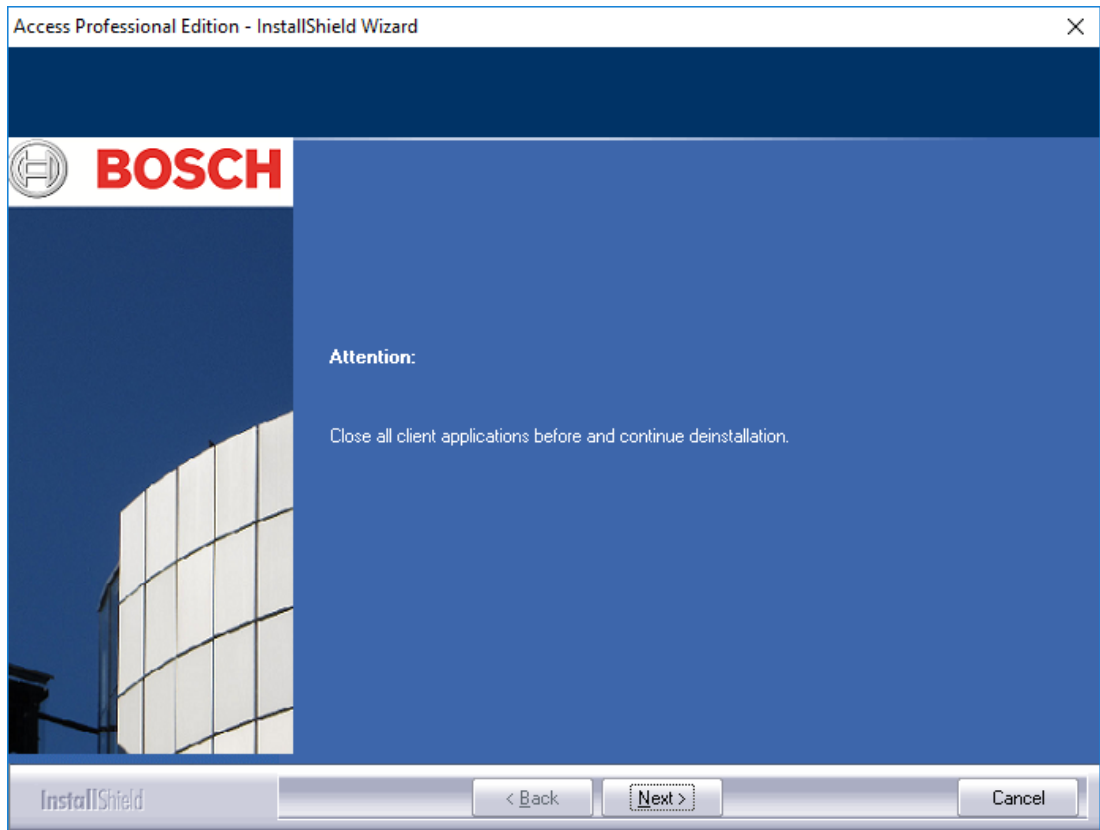
Confirming the Deinstallation

When the safety check appears answer **Yes** to the question for the deinstallation to proceed:
Do you want to completely remove the selected application and all of its features?

5.2.4

Close all programs

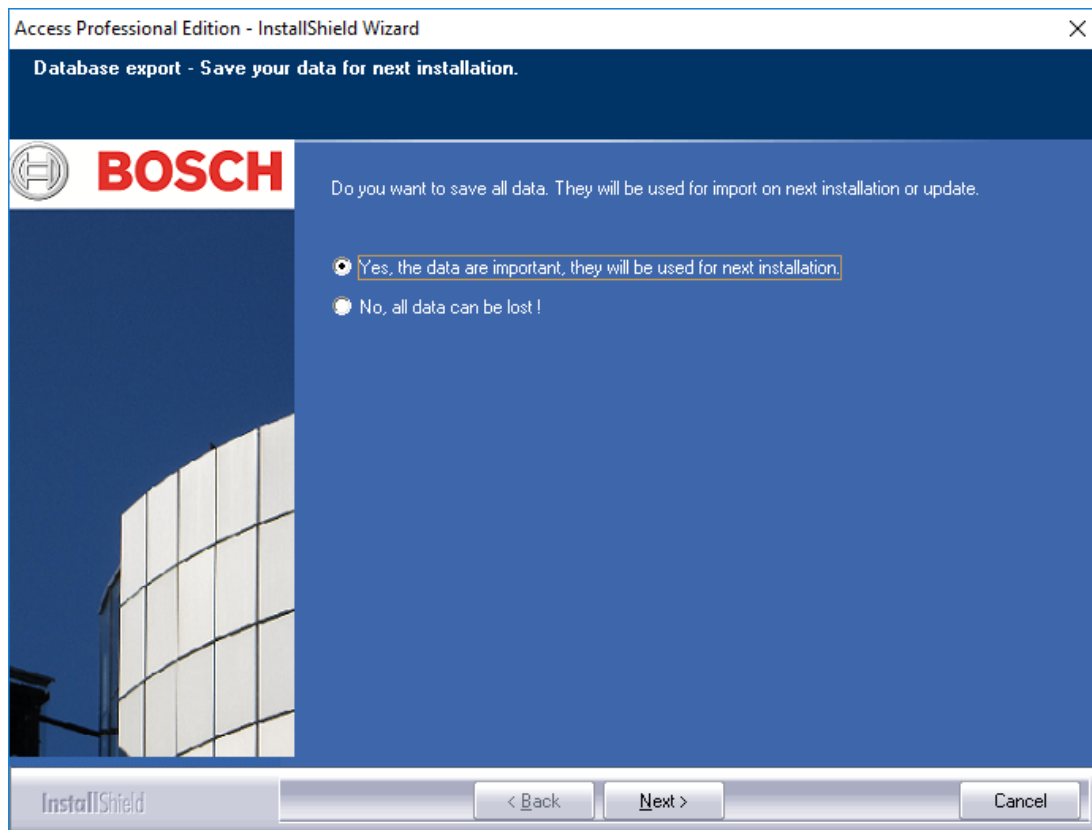
Before performing a data export in the next step please close all Access PE applications. Do not click **Next** until you have done this.



5.2.5 Performing an Export

Export saves your configuration and data to the folder **SaveData** and creates the following subdirectories in the process:

- cfg_Save** Backup of the configuration data, containing devices and all system settings.
- DB_Save** Backup of the database tables.
- MsgLog_Save** Backup of the logs.
- Pictures_Save** Backup of the pictures.

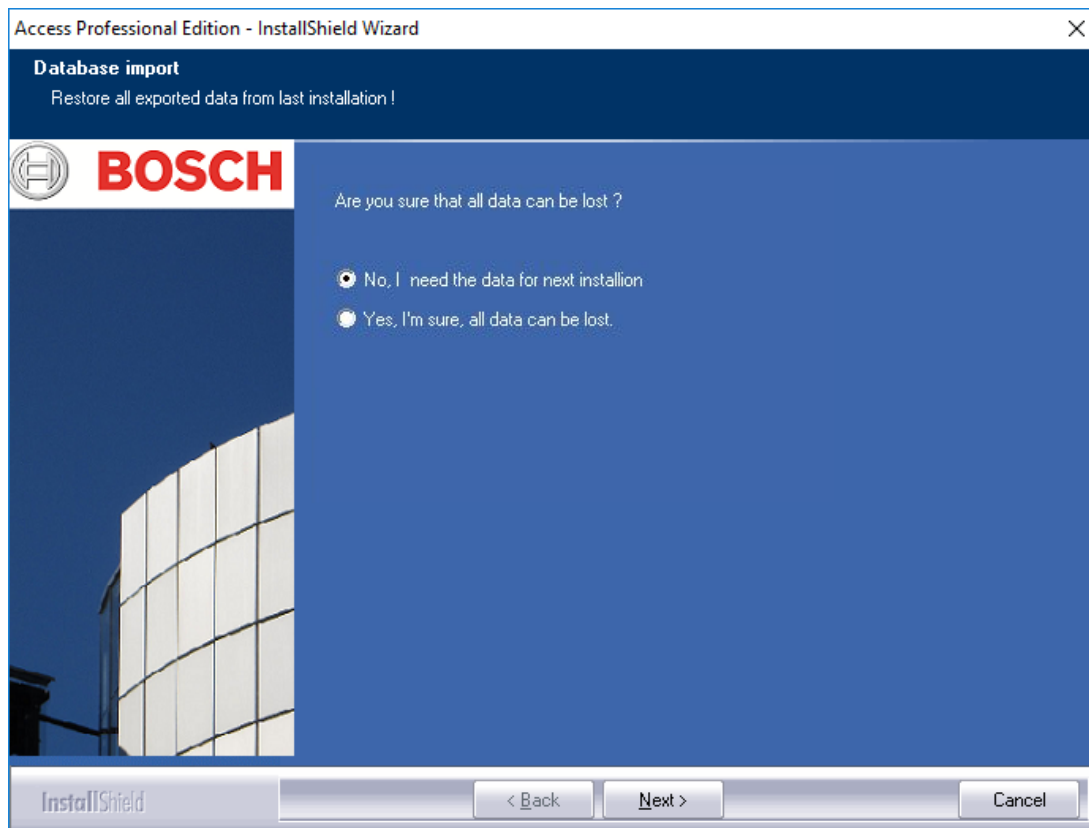


To perform the export, confirm the default action by clicking **Next**.

5.2.6 Declining the Export

You can forego the export by selecting the option **No, all data can be lost!**

In this case you will have to reconfirm the setting by selecting the option **Yes, I 'm sure, all data can be lost.** in the following dialog box. Alternatively, if you confirm the default setting, the data export will be started.



5.2.7 DbiTool

The Export function executes a separate application, also located in the bin directory of Access PE, and exports the selected tables. The default directory for containing exports is called **SaveData** and is created parallel to the software directories under C:\Program Files \BOSCH\Access Professional Edition\

Depending on the amount of data this process can take several minutes.

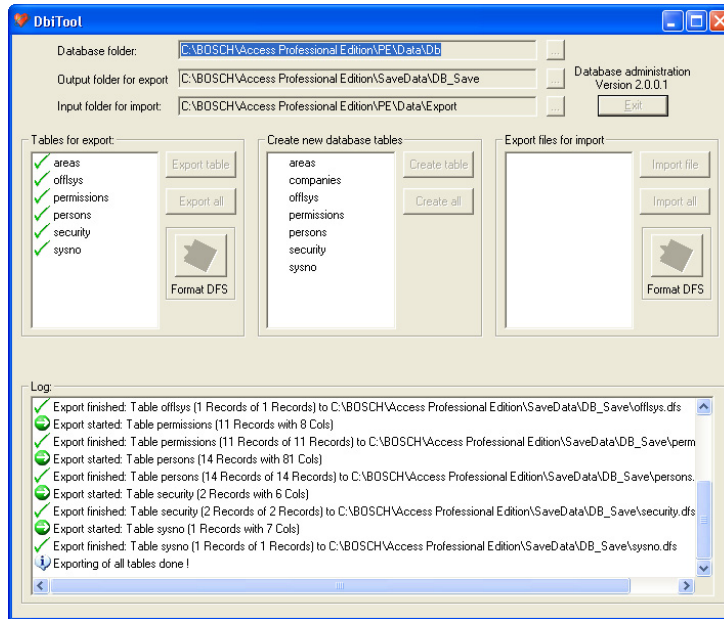


Figure 5.2: Deinstallation - Database-Export

The application is automatically closed upon completion of the export.

The tables contain the following:

- **areas** – Areas and the number of persons in these areas
- **permissions** – access permissions
- **persons** – personnel data with card and permissions information.
- **security** – user permissions
- **sysno** – internal administration table for system counter-data.

Open Applications:

If you have **Personnel Management**, **Configurator** or **Logviewer** open at this time, then a pop-up window will prompt you to close them.

Close the window and wait for a moment before clicking **OK**, to make sure that the application has been completely closed.

If this **OK** button is clicked while an application is running, then an error message is displayed and the deinstallation is aborted.



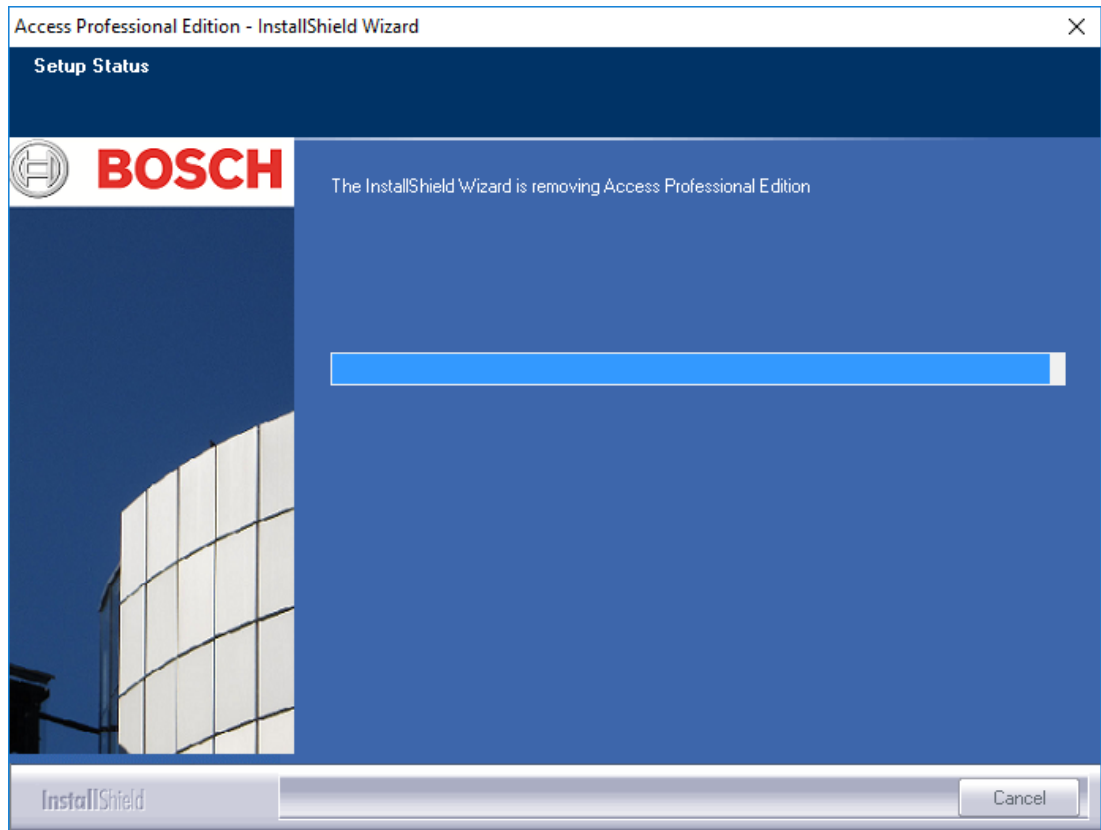
Notice!

This application can be started manually at any time via **Start > Programs > Access Professional Edition > Database Management** in order to perform a database export. The default export format can be changed between DFS (default) and CSV using the toggle button. CSV is editable in e.g. Excel.

5.2.8

Setup Status

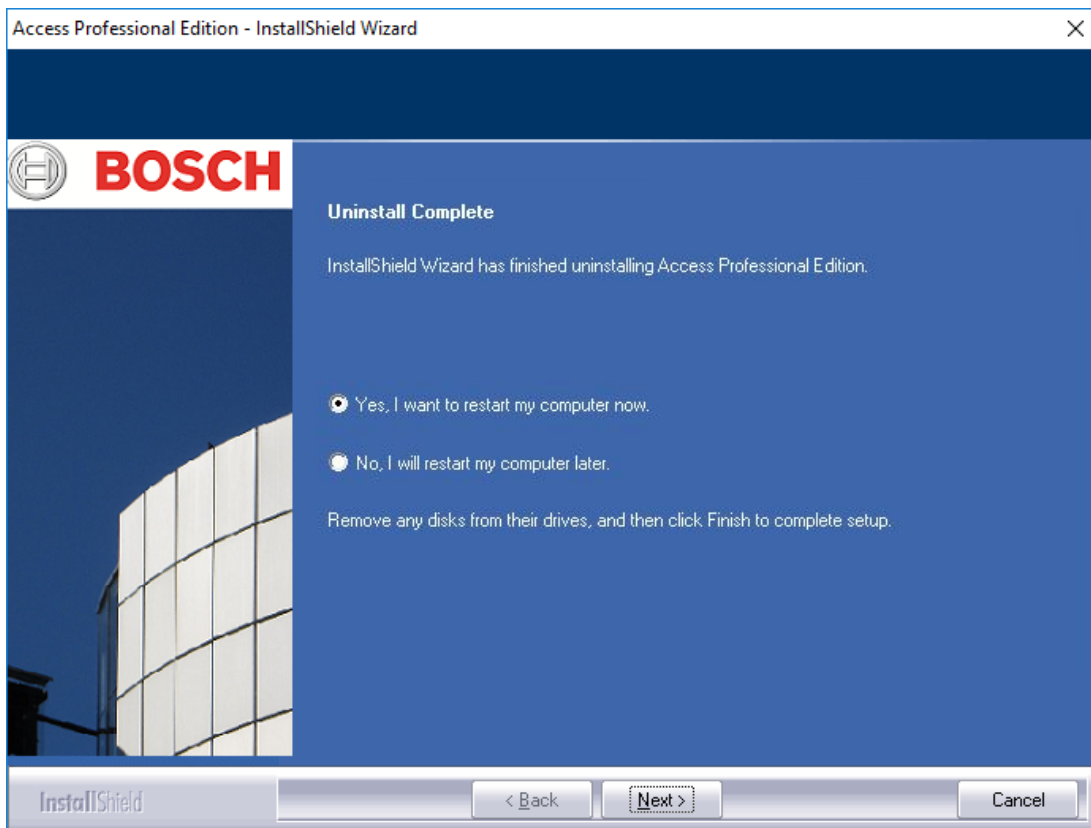
The window below shows the progress of the deinstallation.



5.2.9

Completion and Reboot

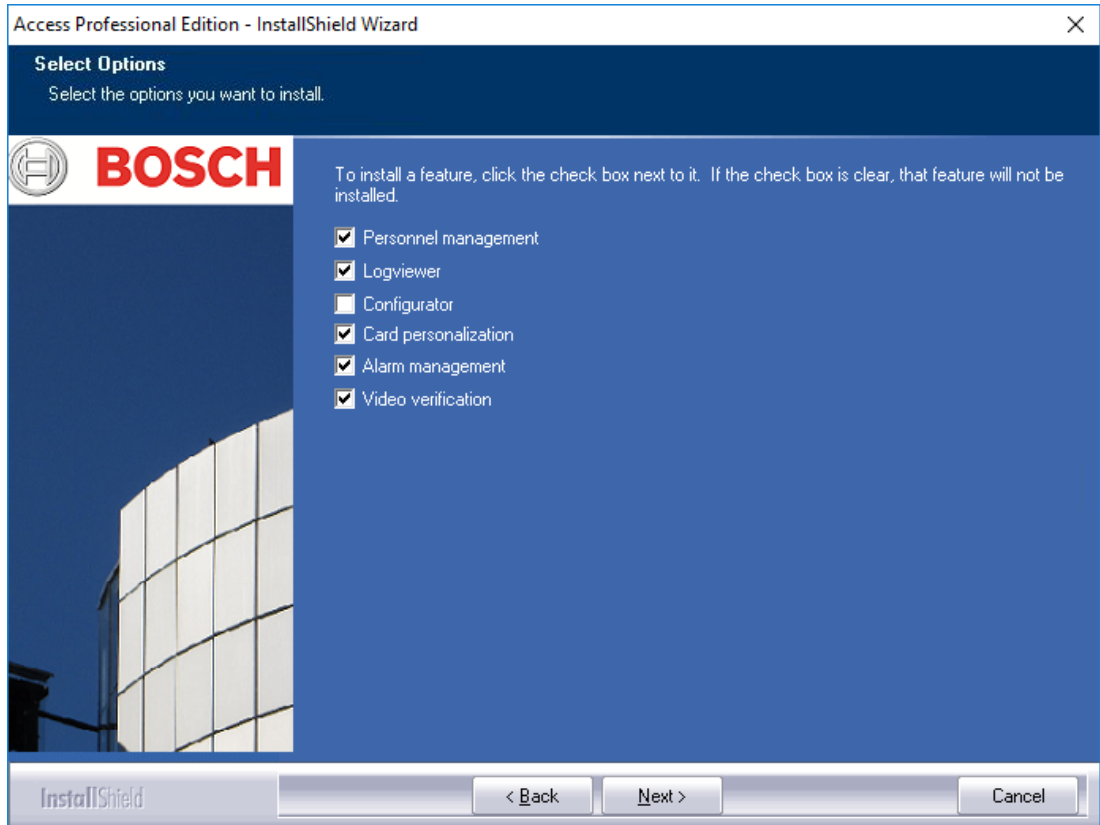
After the deinstallation has completed the Install Shield Wizard can be closed by clicking **Finish**.



A reboot is only necessary if you did not close all programs and services before the deinstallation.

5.3 Modify the software

If the original installation left out one or more applications, or if it is decided that certain applications on certain computers are no longer needed, then use the **Modify** option for subsequent installations and or deinstallations. A dialog appears listing those applications currently installed (box checked) or not installed.



Check the boxes of those applications which you wish to add to the installation.



Notice!

Please do **not** clear the check-boxes of any applications you wish to retain. This would lead to their being deinstalled.



Notice!

The **Modify** option also enables to configure the use of the ApeUser and to synchronize the password.

5.4 Reinstallation/Update

Reinstallation can begin immediately after completion of the deinstallation process. This process is identical to a first installation –compare Section 3 Installation- and hence we will only briefly list the steps and their responses here:

- Execute the file **Access Professional Edition Setup.exe**
- Language Selection - **OK**
- Initialization of the Install Shield Wizard - **Next**
- License Agreement – Select the Option **I accept the terms of the license agreement.** - **Next**
- Customer Information – **Next**

- Choose the Installation Type – **Next**
- Select the user for the shared folder – **Next**
- Choose the Installation Path – **Next**
- Choose the Components – **Next**
- Confirm the current settings – **Next**
- Progress bar
- Database Import – compare *Import*, page 66 and *DbiTool*, page 68
- Completing the Installation – **Finish**.

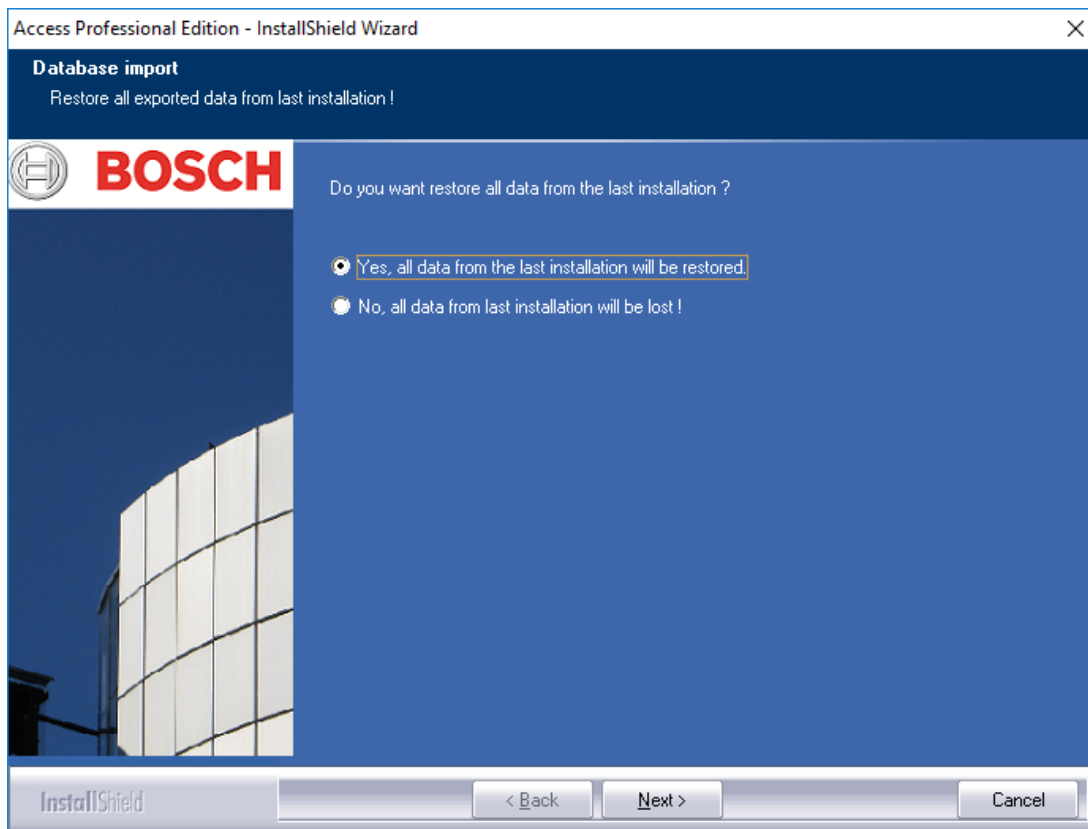
**Notice!**

It is possible to choose a different installation path for the reinstallation as was used in the previous installation. The backup files will still be found by the Import Tool enabling a data import to be performed.

5.4.1

Import

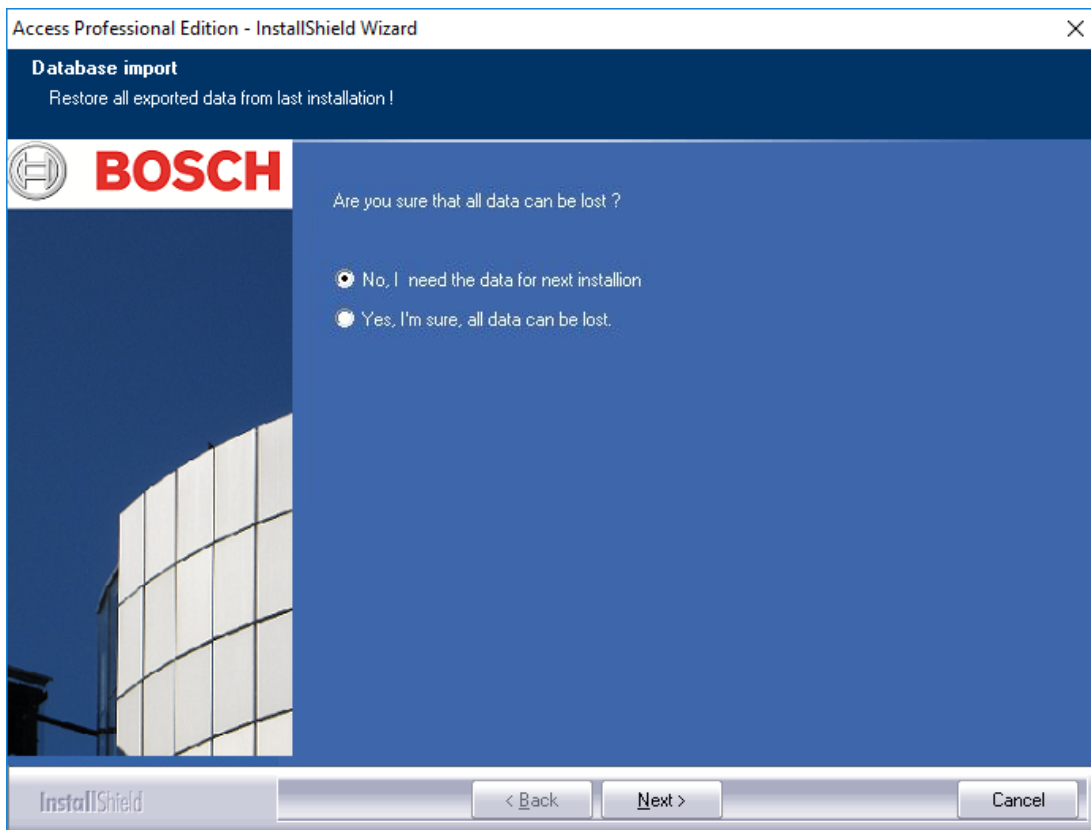
Before the Installation completion message appears you will be asked whether you wish to import saved data.



Declining the Import

If you do not wish to import the saved data, then select the option **No, all data from last installation will be lost!**

Once again a safety check follows which defaults to a data import. Only selecting the option **Yes, I 'm really sure. All data will be lost.** will prevent a data import.



Notice!

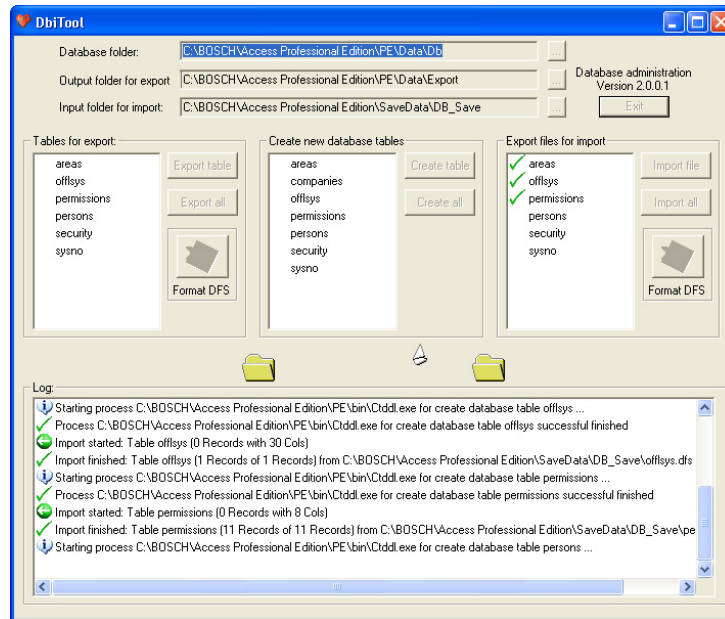
The only way to redo a previously declined data import is manually via Start > Programs > Access Professional Edition > Database Management. Please note however that any data stored in the meantime will be overwritten by the import.

5.4.2

DbiTool

The import function calls a separate application, which also resides in Access PE's bin directory and imports selected tables.

Depending on the amount of data this process can take some minutes.



5.4.3

Check the Configuration

After importing the data a message appears informing you that the Access PE Configurator is about to be started.

Now the configurator will be started. Please check your configuration and save it!

Click **OK** to start the Configurator and check the configuration data which have been loaded.



Caution!

If after an update a new AMC version is available all AMCs will be updated automatically. During this update process no access is possible at any entrance.

5.4.4

Installation completed

After checking the configuration close the Configurator. At this point the installation can be completed by clicking **Finish** in the final installation screen.

6 User rights

The rights for users of Access PE applications (as well as users of the Configurator and the Logviewer) are assigned in Personnel Management on a special personnel data tab (= User Rights).

Please refer to the manual “Personnel Management” for detailed description.

7 UL 294 Requirements

Features not evaluated by UL:

- The Video Verification System
- Map Viewer and Alarm Management with Map and Video Verification
- X-Protect Integration
- Video Player
- Badge Designer
- The Delta 1200 Series
- Rosslare ARD-1200EM Series
- LAC Controllers
- LACi Controllers
- APC-AMC2-4R4CF Controllers
 - BG 900 reader interface protocol
 - L-BUS reader interface protocol
- Security System IDS - Arming/Disarming
- Elevator Use
- Texts
- Burglar Alarm Use

Features evaluated by UL:

- 26-bit Wiegand format readers
- AMC2 Controllers:
 - APC-AMC2-4WCF
 - API-AMC2-4WE
 - API-AMC2-8IOE
 - API-AMC2-16IOE
- APE-SW as supplementary monitoring equipment

The following Bosch model card readers were evaluated by UL for compatibility with the Bosch's APE-SW software system:

- LECTUS secure 1000 WI
- LECTUS secure 4000 WI
- LECTUS secure 5000 WI



Bosch Security Systems B.V.

Torenallee 49

5617 BA Eindhoven

Netherlands

www.boschsecurity.com

© Bosch Security Systems B.V., 2019