



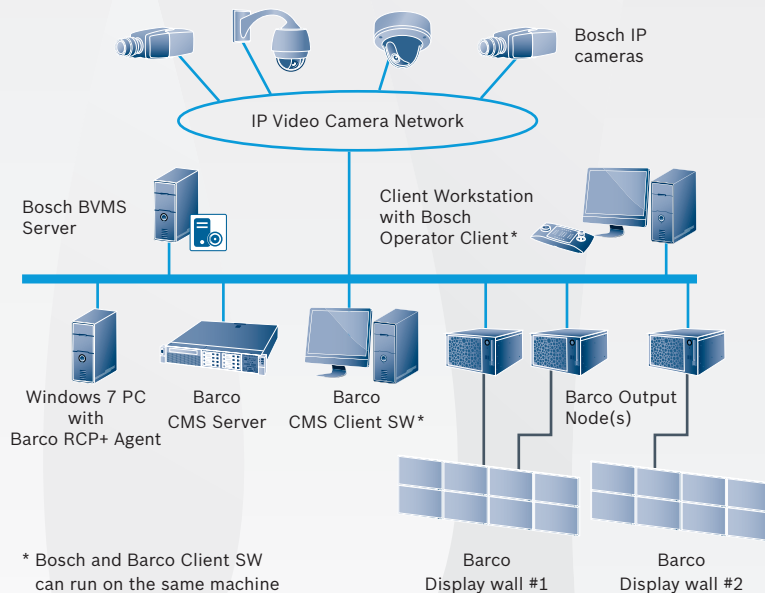
BOSCH

Invented for life

Integrated Security, Safety and Video Management Solution

Monitor Walls

Bosch Security and Safety Systems and Barco



* Bosch and Barco Client SW can run on the same machine

- ▶ Seamless integration of Barco Monitor Wall in BVMS Operator Client
- ▶ Cameras are easily assigned to the Barco Monitor Wall
- ▶ System scales to display virtually unlimited number of cameras
- ▶ Multiple Barco video walls can be used with one VMS



The Bosch Video Management System (BVMS) is an enterprise-class client/server based video management system with advanced user interface concepts for effective and efficient operation that provides seamless management of digital video, audio and data across an IP network. It seamlessly combines Bosch IP cameras, encoders, video management and recording systems, and various matrix switches, so there is never a need for an operator to worry about where the video is coming from. BVMS is built from the ground up with fast out-of-the-box deployment and easy to use configuration and operation in mind. Enriched by powerful VMS features, this makes it a strong solution. Setting the foundation from the beginning, one can easily grow when the need arises, while keeping the same user interface and recording format. This capability is now being extended to Barco video walls.

The Barco video wall controller will independently and natively decode the requested streams and populate them on the Barco video wall grid driven from within the BVMS environment. The Barco video wall can be controlled in three ways: Barco's Control Room Management suite software (CMS), BVMS Operator Client, or a mix of both. Hence, Barco's collaborative visualization platform is now seamlessly embedded in the User Interface of the BVMS Operator Client, allowing to easily assigning cameras to the Barco Video Walls in various layouts. All unique features of Barco CMS, such as display of Barco ProServer sources, fully flexible layout creation and push collaboration are still available via the Barco CMS Sidebar. This enables users to design the operational workflow that best suits their needs and allows smooth upgrades for existing customers.

Compatibility

Barco	Bosch products
<ul style="list-style-type: none"> · Barco Transform N system (installed/licensed): - CMS version 2.5 or higher - Windows 7 PC running the Barco RCP+ Agent - For Barco customer currently using Apollo and/or Transform A, please contact Barco 	<ul style="list-style-type: none"> · BVMS 4.5 or newer · All cameras must have multicast enabled, and also the network must support multicast
<ul style="list-style-type: none"> · The RCP+ Agent – as the BVMS-System – uses the RCP+ protocol. So encoders and cameras must be compatible with this protocol. <p>In general, most RCP+ supporting cameras working with the Bosch BVMS will also be compatible with the RCP+ Agent and CMS. For confirmation on a particular brand and model number please contact Barco and Bosch for their interoperability lists or forward plans.</p>	

Key features covered with Bosch & Barco

Increased situational awareness

due to the integration of the Barco visualization within BVMS Operator Client's workflow (ease of use).

Reduced training time

due to an integrated display management since operators can control the Barco video wall from the familiar BVMS user interface. This greatly reduces complexity of operations and thus contributes to more efficient operation.

Collaborative visualization

through Barco CMS while working within BVMS (the power of two). When specific CMS features are needed, the operator can use them with the CMS Sidebar application, in addition to being able to comfortably select how the video sources are arranged on the Barco video wall from a list of pre-defined layouts inside BVMS.

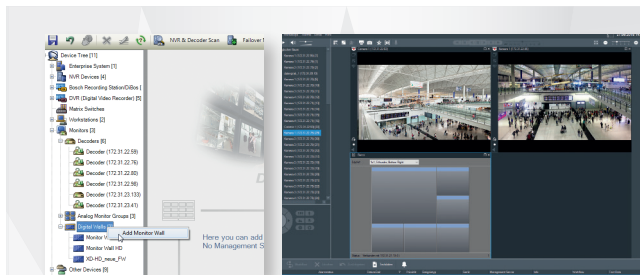
Future ready

due to unlimited scalability since the system can be scaled to display virtually unlimited numbers of VMS video sources on multiple Barco video walls.

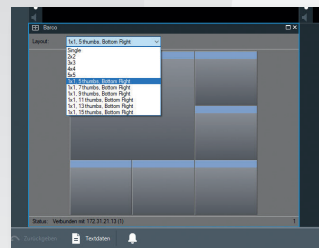
Easy and fast deployment

of integration since connecting the Barco CMS RCP+ Agent to BVMS system is as easy as integrating a decoder by its IP-address.

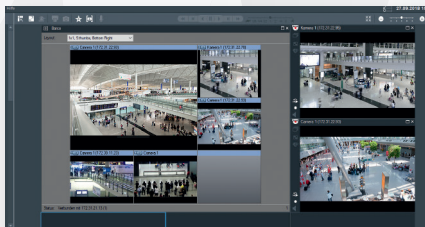
Barco CMS functionality within BVMS



Create a 'Digital Wall' in BVMS and assign the RCP+-Decoder to it. A CMS 'Perspective' will automatically be created for this 'Digital Wall'



Different pre-defined layouts can be applied by the operator to the 'Digital Wall' to arrange various 'sources'. An operator can then drag 'Cameras' to 'Digital Wall' in the Operator Client, which then would be available as 'Sources' in CMS, and automatically placed in the CMS 'Perspective'.



In BVMS Operator Client the operator has symbols for cameras and monitors (or a digital monitor wall) that represent the real cameras and monitors. When dragging a camera symbol onto a monitor symbol the BVMS system makes sure that the image of the real camera is displayed on the video wall.

The Bosch division Security and Safety Systems is a leading global supplier of security, safety, and communications products, solutions and services. Protecting lives, buildings and assets is our aim. The product portfolio includes video surveillance, intrusion detection, fire detection and voice evacuation systems as well as access control and management systems. Professional audio and conference systems for communication of voice, sound and music complete the range. Bosch Security and Safety Systems develops and manufactures in its own plants across the world. Additional information can be accessed at www.boschsecurity.com

Barco provides flexible and mission-critical visualization software and hardware products consisting of highquality displays, rear-projection and near-seamless LCD video walls, professional grade graphics controllers and a Control Room Management suite (CMS) – an advanced software for easy display wall management, efficient inter-control-center collaboration and fast decision making based on sharing the right visual information at the right time easily.

For more information, visit: www.barco.com

Visit www.ipp.boschsecurity.com for details on the Bosch Integration Partner Program