

# Installation

## LM1-VCxxL

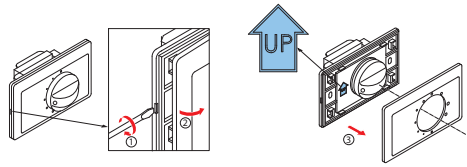


Fig. 1:

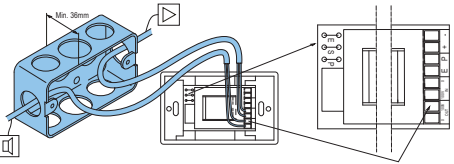


Fig. 2:

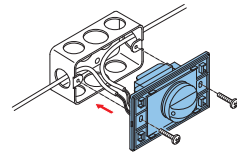


Fig. 3:

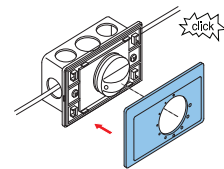


Fig. 4:

## LM1-VCxxP

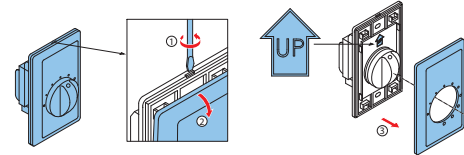


Fig. 5:

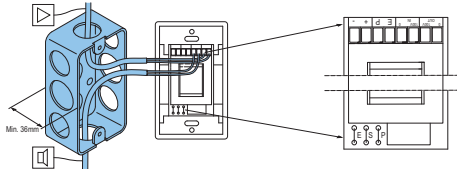


Fig. 6:

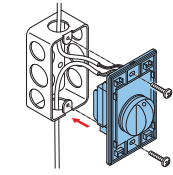


Fig. 7:

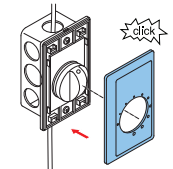


Fig. 8:

# Wiring

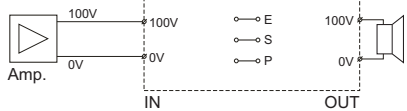


Fig. 9: Standard system

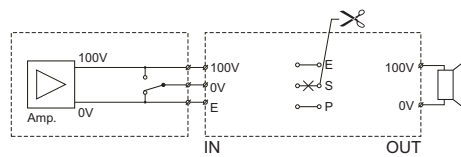


Fig. 10: 3-wire volume override

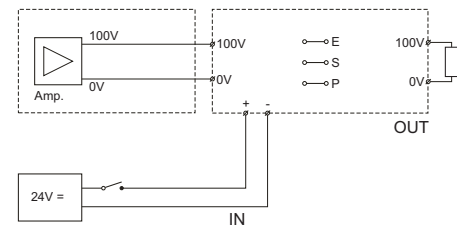


Fig. 11: 4-wire volume override

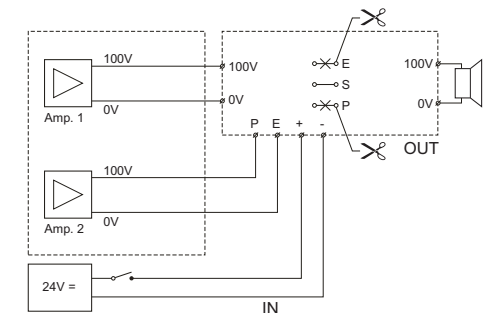


Fig. 12: 4-wire volume override with Emergency message from amplifier 2

## Circuit diagrams

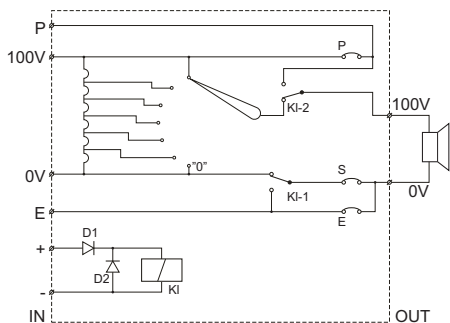


Fig. 13: Circuit diagram LM1-VC12P/L

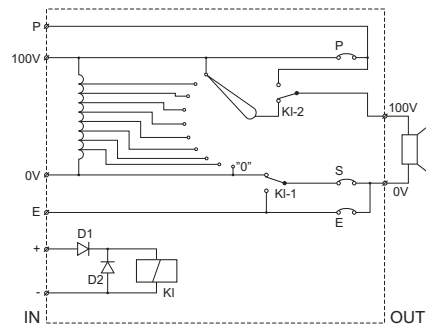


Fig. 14: Circuit diagram LM1-VC36P/L

## Technical data

### Electrical

<b>LM1-VC12P (portrait version)</b> <b>LM1-VC12L (landscape version)</b>	12 W Volume control
Rated power (PHC)	12 W
Input voltage	100 V
Attenuation steps	5 x -3 dB + off
Max. allowed torque on the switch knob	80 Nm
Frequency response (-1 dB)	50 Hz to 20 kHz
THD	<0.5%
Connection terminal	8-way screw terminal
Acceptable wire gauge $\varnothing$	0,8 to 1.6 mm



LM1-VC12P, LM1-VC12L, LM1-VC36P, LM1-VC36L Volume Controls



en Installation note

Override relay / Current consumption	20 mA at 24 VDC
<b>LM1-VC36P (portrait version)</b> <b>LM1-VC36L (landscape version)</b>	36 W Volume control
Rated power (PHC)	36 W
Input voltage	100 V
Attenuation steps	8 x -3 dB + off
Max. allowed torque on the switch knob	80 Nm
Frequency response (-1 dB)	50 Hz to 20 kHz
THD	<0.5%
Connection terminal	8-way screw terminal
Acceptable wire gauge $\varnothing$	0,8 to 1.6 mm

Override relay / Current consumption	20 mA at 24 VDC
<b>Mechanical</b>	
<b>LM1-VC12P (portrait version)</b> <b>LM1-VC12L (landscape version)</b>	
Dimensions (W x H x D)	114 x 70 x 32 mm
Weight	257 g
Color	White (RAL 9010)
<b>LM1-VC36P (portrait version)</b> <b>LM1-VC36L (landscape version)</b>	
Dimensions (W x H x D)	114 x 70 x 32 mm
Weight	270 g
Color	White (RAL 9010)

### Environmental

Operating temperature	-10 °C to +55 °C (14 °F to +131 °F)
Storage temperature	-40 °C to +70 °C (-40 °F to +158 °F)
Relative humidity	<95%

### Certification and approvals

Safety	acc. to EN 60065
Self-extinguishing	acc. to UL 94 V0