



# CCS 900 Ultra

Discussion System



**BOSCH**

en Installation and Operating Manual



# Table of Contents

<b>1</b>	<b>About this manual</b>	<b>5</b>
<b>2</b>	<b>Introduction</b>	<b>6</b>
<b>3</b>	<b>Control Unit (CU)</b>	<b>7</b>
<b>4</b>	<b>Delegate and Chairman Unit</b>	<b>9</b>
<b>5</b>	<b>Installation</b>	<b>10</b>
5.1	Connecting the Delegate and Chairman Units	10
5.2	Connecting up to 150 units	10
5.3	Locking the extension cable	11
5.4	Connecting an external microphone	11
5.5	Connecting a wireless microphone	12
5.6	Recording/playback the conversation	12
5.7	Connecting a PA-system or other external equipment	13
5.8	Connecting a telephone coupler	13
5.9	Connecting an equalizer	14
5.10	Mains connection	14
5.11	Connecting a USB cable	15
<b>6</b>	<b>Operation</b>	<b>16</b>
6.1	Testing the connection of the Delegate and Chairman Units	16
6.2	Using the microphone button of the Delegate Unit	16
6.3	Possible-To-Speak	17
6.4	Using the microphone button of the Chairman Unit	17
6.5	Using the priority button	18
6.6	Priority mode settings in Chairman Unit	18
6.7	Open mode	19
6.8	Open mode with auto switch-off	19
6.9	Override mode	20
6.10	Chairman only mode	20
6.11	Volume control of the Delegate and Chairman Units	21
6.12	Volume control of the Delegate and Chairman Units	21
6.13	Monitoring volume control	22
6.14	Using a headphone	22
<b>7</b>	<b>Built-in MP3 recorder (CCS-CURD only)</b>	<b>23</b>
7.1	Introduction	23
7.2	Overview	24
7.2.1	User display	24
7.2.2	Modes of operation	24
7.2.3	Start-up screen	25
7.3	Setting up the MP3 recorder	25

7.3.1	Overview of set-up icons	26
7.3.2	Deleting files	27
7.3.3	Setting the date and time	28
7.3.4	Selecting the bit rate	28
7.3.5	Continuous recording	29
7.3.6	Set internal/ external recording options	29
7.4	Record	30
7.4.1	Overview of record icons	30
7.4.2	Making a recording	31
7.4.3	Exchanging SD cards during recording	31
7.5	Pre-listen and Playback	32
7.5.1	Overview of pre-listen/ playback icons	32
7.5.2	Pre-listening to and playing back files	33
<b>8</b>	<b>Troubleshooting</b>	<b>34</b>
<b>9</b>	<b>Technical data</b>	<b>36</b>
9.1	System Electrical and Electro-Acoustical Characteristics	36
9.1.1	The Control Unit (CU)	36
9.1.2	Combined Units	38
9.2	Mechanical Data	38
9.2.1	Control and Power Supply Unit	38
9.2.2	Delegate/Chairman Units	38
9.3	General data	39
9.3.1	System Environmental Conditions	39
9.3.2	Equipment Range	40
<b>10</b>	<b>Appendix</b>	<b>41</b>
10.1	Pin Configuration	41
10.1.1	Trunk Connections (A)	41
10.1.2	External Microphone (XLR) (B)	41
10.1.3	CINCH Connector (C)	41
10.1.4	Mains Connector (D)	41
10.1.5	Headphone Jack-plug (3.5mm) (E)	41
10.1.6	Schematics of connectors LBB 3316/00	42
10.2	Mounting Instructions	43
10.3	Bracket for Flush Mounting	44

# 1 About this manual

This manual provides all the information required to install and operate the CCS 900 Ultro Discussion System.

## Conventions



### **WARNING!**

Warnings draw attention to instructions that must be followed to prevent personal injury.

---



### **CAUTION!**

Cautions draw attention to instructions that must be followed to prevent damage to the equipment.

---



### **NOTICE!**

Notes draw attention to special instruction tips or other useful information.

---

## 2 Introduction

The CCS 900 Ultra Discussion System is a discussion system for use in meeting and conference venues with a limited number of participants.

A CCS 900 Ultra Discussion System consists of:

- One Control Unit (CU).
- Maximum 50 units of which one or more Chairman Unit(s).
- Extension cables if required (5m or 10m).
- Peripheral audio and/or telecommunication equipment.
- A built-in MP3 recorder.

The **CU** is the heart of the discussion system which controls the microphones of the Chairman and Delegate Units as well as providing facilities for audio inputs and outputs. It also supplies the power for the CU itself, Chairman Unit(s) and Delegate Unit(s).

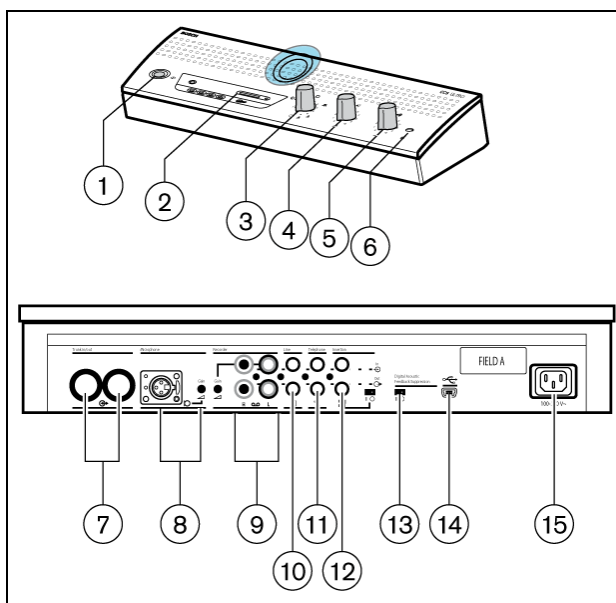
With the use of Digital Acoustic Feedback Suppression the loudspeaker volume can be increased significantly before feedback appears. A Digital Acoustic Feedback Suppressor is only available in CCS-CUD / CCS-CURD.

A **Delegate Unit** enables participants to actively join in a discussion (i.e. speaking and listening) by means of a microphone, controlled by an on/off button and a built-in loudspeaker or external headphone.

A **Chairman Unit** has the same function as a Delegate Unit with the addition of a 'Priority' button, that enables its operator to control the debate by temporary or permanently overruling and muting all active microphones, depending on an internal setting in the Chairman Unit.

The built-in **MP3 recorder** enables participants to: record discussions; listen to discussions before playing it back to the floor; play discussions back to delegates.

### 3 Control Unit (CU)



**Figure 3.1** Control Unit

1. Mains On/Off switch.
2. MP3 recorder (for more information, see section 7).
3. Microphone-mode switch.



**Open mode with auto switch-off.** To select the maximum number of delegate microphones to be activated simultaneously (1, 2, 3 or 4). The microphone automatically switches off if the speaker does not speak for 30 seconds. The microphone can manually be switched off by pushing the button on the Delegate Unit.



**Open mode.** To select the maximum number of delegate microphones to be activated simultaneously (1, 2, 3 or 4). The microphone must be switched on or off manually by pushing the button on the Delegate Unit.



**Override mode.** Only one delegate microphone can be activated. If a new delegate presses his microphone button, the microphone unit of the current speaker will be switched off.



**Chairman only mode.** Only the Chairman Units can be activated.



**Test mode.** For proper installation check. All the red LED's and the light-rings of the connected units will lit, if properly connected.

4. Speaker volume control of all connected Delegate and Chairman Units.
5. Volume control of the speaker or headphone of the CU.
6. Headphone connection with 3.5 mm stereo jack plug socket.
7. Trunk output 1 and 2. For loop through connection of the Delegate and Chairman Units. To each output a maximum of 25 units can be connected. The maximum length of cable between the outputs of the CU and the last unit in the system is 100 m (328 ft.).
8. Microphone input with gain adjustment for external microphone. The external microphone will be muted when the priority button on the Chairman Unit is pressed.
9. Recorder input with gain control and recorder output connection.

10. Line input and output for connecting a PA-system or other audio equipment.
11. Telephone coupler input and output for connecting a remote participant.

**NOTICE!**

The telephone input signal to the CU is not added to the telephone output signal from the CU to prevent line echo due to feedback.

- 
12. Insertion connection. To connect an external audio equalizer for speech quality improvement under difficult acoustic conditions (1 = without equalizer, 0 = insertion connection is internally open, providing means to connect an external equalizer in the path from microphone signals to delegate/chairman loudspeakers).

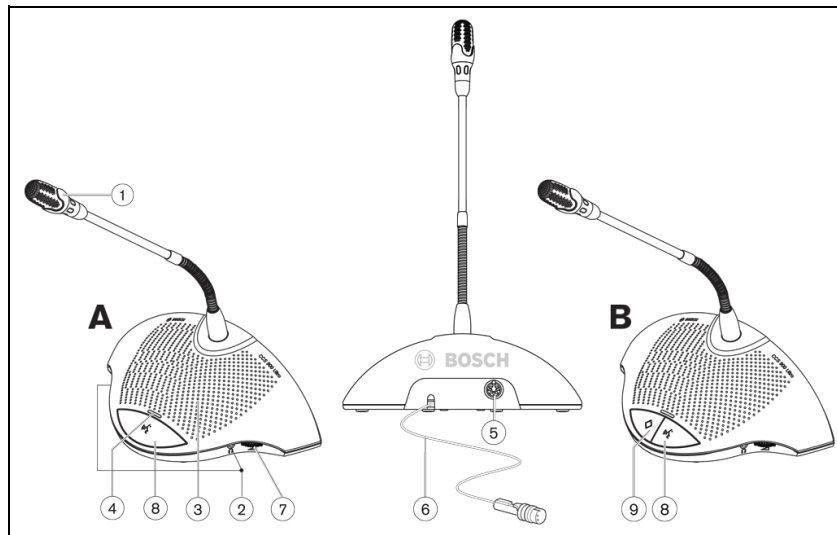
**NOTICE!**

Position "1" required for internal loop-through of the microphone signals to the Delegate / Chairman Unit loudspeakers.

- 
13. Digital Acoustic Feedback Suppressor (DAFS) switch to activate or deactivate the DAFS (optional).
  14. USB connector. Used for downloading recorded speech to a PC (optional).
  15. Mains input connection. Use the included mains cord to connect the CU to the mains socket. In some countries it may be necessary to replace the supplied mains cable by a local one. Brown = live, blue = neutral and green/yellow = earth. (Replacement and color indication not applicable to mains cords for North America).



## 4 Delegate and Chairman Unit



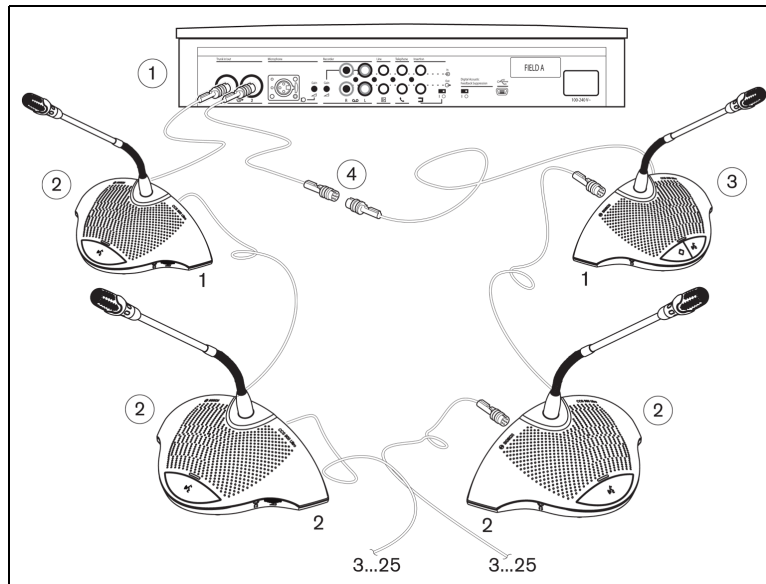
**Figure 4.1**

The Chairman Unit (B) has the same function as a Delegate Unit (A) with the exception of a 'priority' button and the Possible-To-Speak indication.

1. Microphone with red illuminated indicator ring, lights when the microphone is ON.
2. Two 3.5 mm stereo headphone sockets, one at each side, for headphone or recorder connection. Insertion of a headphone jack in one or both sockets automatically mutes the unit's loudspeaker.
3. Built-in loudspeaker, automatically muted when the microphone is on.
4. Bi-color LED indicator above the microphone push button. Red for microphone on, white for Possible-To-Speak indication (Delegate Unit only).
5. 7-pole circular female socket for loop through connection to the next unit.
6. 2m flying lead connection cable with sturdy moulded 7-pole circular male connector for connection to the previous unit or CU.
7. Rotary volume control for headphones only.
8. Microphone ON/OFF push-button.
9. Chairman Priority button. When pressed emits chime tone, overrules/mutes all active microphones of Delegate Units in the system and keeps the chairman's microphone on for as long as the button is pressed (setting can be changed in the Chairman Unit). In systems with several Chairman Units these settings are independently selectable for each Chairman Unit.

## 5 Installation

### 5.1 Connecting the Delegate and Chairman Units

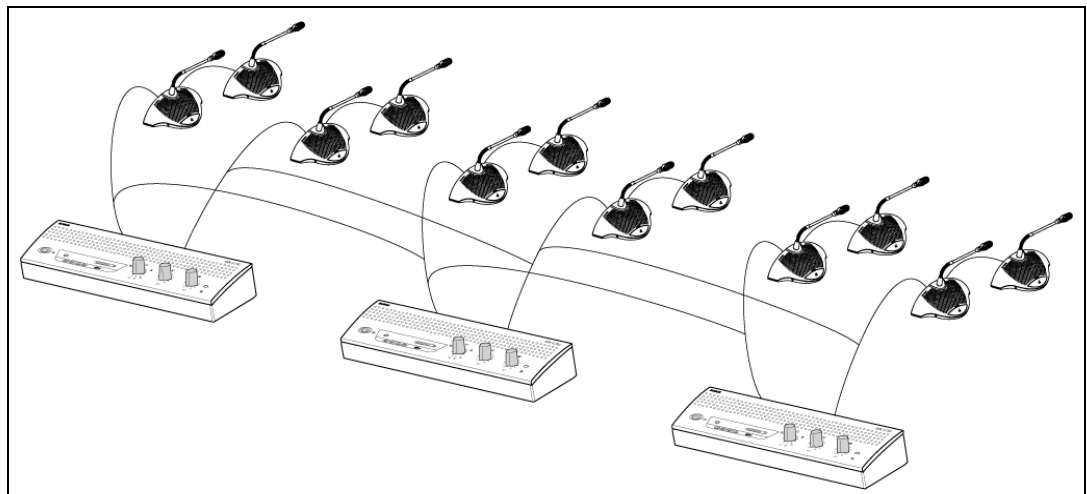


**Figure 5.1**

Connect the Delegate (2) and Chairman (3) Units to the trunk connectors of the CU (1). Use an extension cable (4) if necessary.

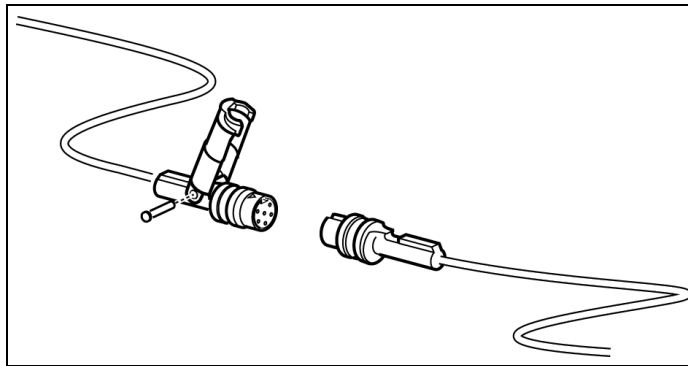
### 5.2 Connecting up to 150 units

The CCS 900 Ultra can be used with up to 150 units by adding a maximum of 2 additional Control Units acting as power supply units only. Please contact your local Bosch representative for the installation instructions.



**Figure 5.2** Connecting 6 x 25 units

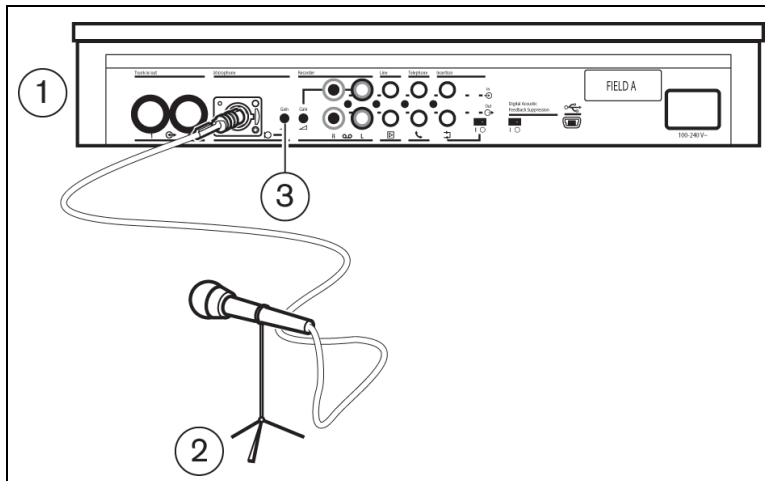
### 5.3 Locking the extension cable



**Figure 5.3**

Cable locking clamps can be used in combination with the extension cables to prevent accidental disconnection.

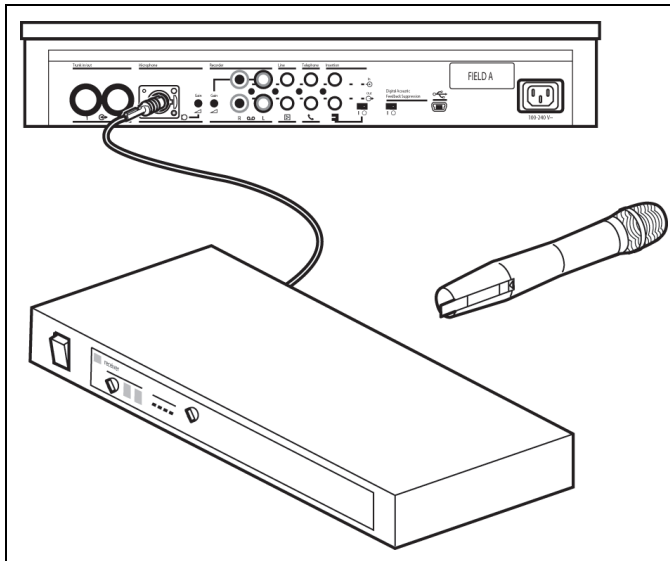
### 5.4 Connecting an external microphone



**Figure 5.4**

Put the external microphone (2) connector in the microphone input of the CU (1). Adjust the sensitivity by use of the gain control (3). Use only microphones with balanced output. The microphone input provides a 12V phantom power supply.

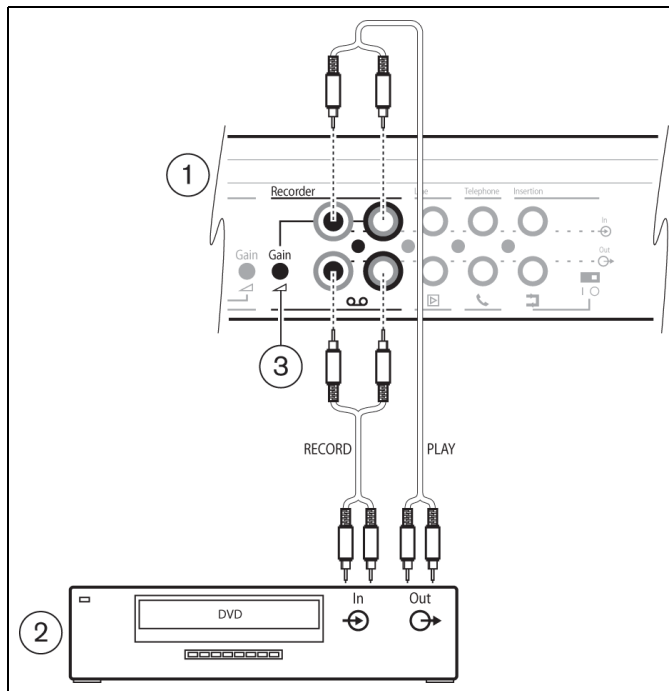
## 5.5 Connecting a wireless microphone



**Figure 5.5**

Connecting a wireless microphone to the external microphone input is possible with the included 50dB attenuator. This way of connection allows interruption of the wireless microphone by the chairman's priority button.

## 5.6 Recording/playback the conversation



**Figure 5.6**

Connect the cabling of the recorder device (2) to the recorder input and output of the CU (1). Use the gain control (3) to adjust the sensitivity of the recorder input of the CU.

### 5.7 Connecting a PA-system or other external equipment

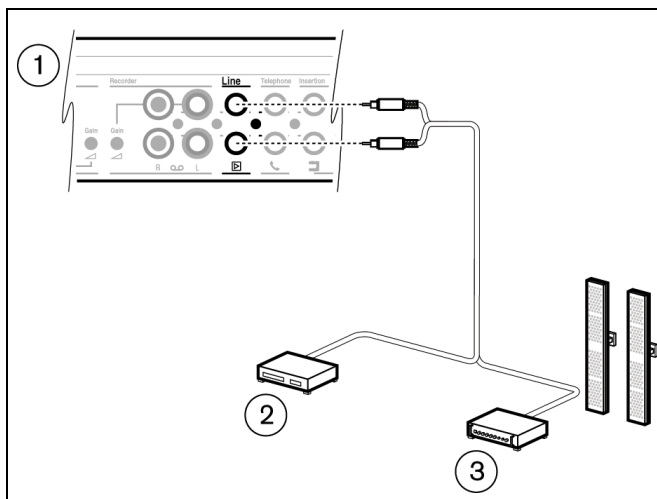


Figure 5.7

Connect a PA-system (3) or other devices (2) to the in- and output of the CU (1). Connect audio sources to the line input, a PA amplifier or other sound-processing devices to the line output.

### 5.8 Connecting a telephone coupler

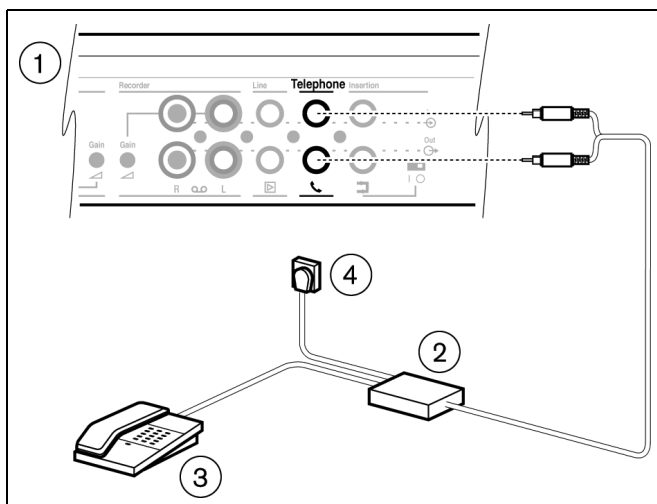


Figure 5.8

Connect the telephone coupler (2) to the telephone input and output of the CU (1). The telephone coupler is further connected to the telephone wall socket (4) and a telephone (3) for dialing.

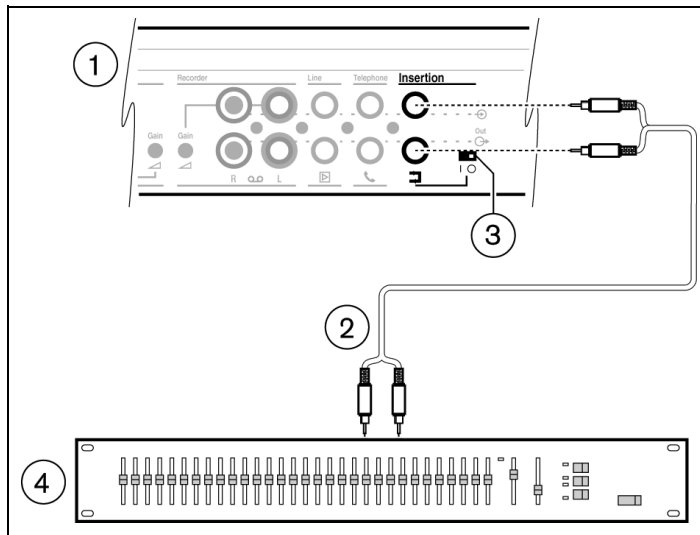
A connection to a telephone network must always be made via a telephone coupler that provides adequate isolation between the telephone network (PBX) and the CCS 900 Ultra system. The telephone coupler shall also meet all relevant requirements for this type of communication equipment as imposed by law and/or responsible telecommunication organizations in the country of use.



**CAUTION!**

Never try to make a direct connection between the telephone network and the CCS 900 Ultra discussion system.

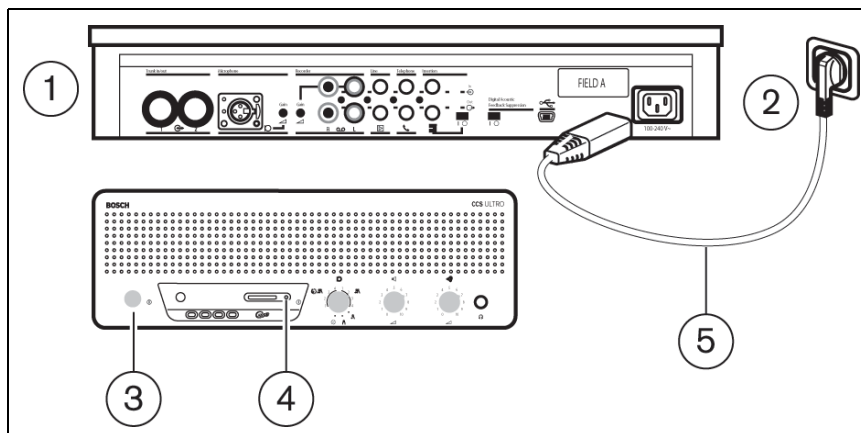
## 5.9 Connecting an equalizer



**Figure 5.9**

Put the insertion switch (3) in position "0" and connect the cabling (2) of the (mono) equalizer (4) to the insertion input and output of the CU (1). Switch (3) must be in position "1" (loop through) if the insertion input/output is not used.

## 5.10 Mains connection



**Figure 5.10**



### WARNING!

The CU must be earthed via the mains supply for safety reasons and to ensure the specified audio performance of the system. Do not open the CU and/or Delegate/Chairman Units, no user serviceable parts inside.

Use the supplied mains cord set (5) to connect the CU (1) to a protective earthed mains socket (2). Press the on/off switch (3) to power up the system, the display (4) will be lit (CCS-CURD only).

## 5.11 Connecting a USB cable

Use the optional USB cable to connect the CU (1) to a PC. Data can then be downloaded from the CU to the PC (CCS-CURD only). See section 7 for more information.

**CAUTION!**

Do not connect the USB cable and audio output/input to the same PC, otherwise the system will not work.

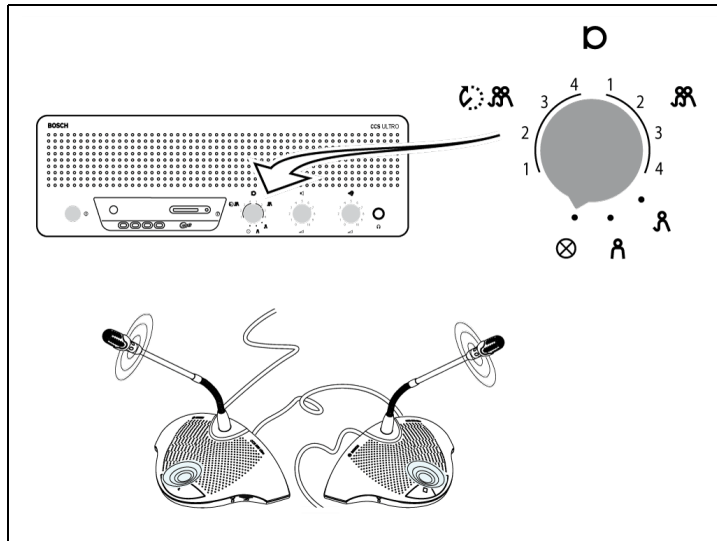
**CAUTION!**

Do not disconnect the USB cable or shut down the Control Unit without following the PC disconnection procedures.

---

## 6 Operation

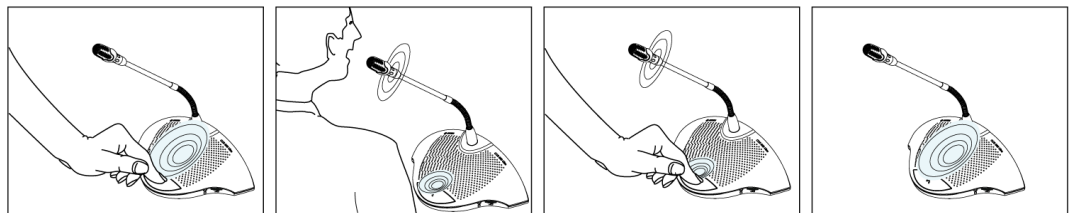
### 6.1 Testing the connection of the Delegate and Chairman Units



**Figure 6.1**

Put the mode selector in the test position, all light-ring indicators and red LEDs of the Delegate and Chairman Units must lit if properly connected.

### 6.2 Using the microphone button of the Delegate Unit

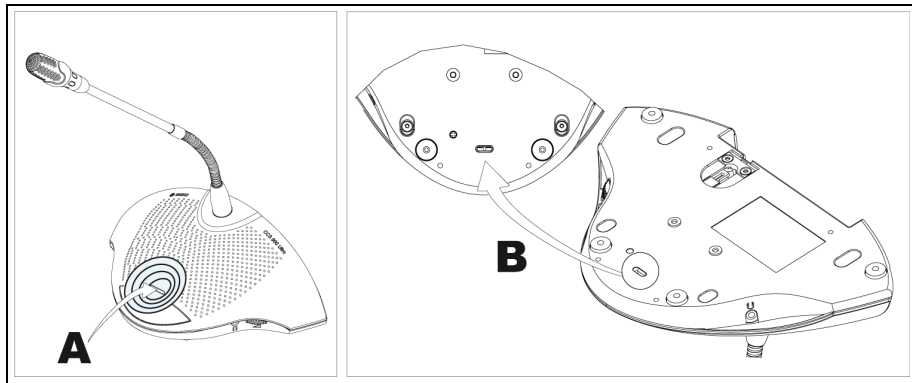


**Figure 6.2**

Depending on the position of the microphone mode switch on the CU, pressing the microphone button on a Delegate Unit will activate the delegate microphone. Pressing again switches the microphone off.



### 6.3 Possible-To-Speak



**Figure 6.3**

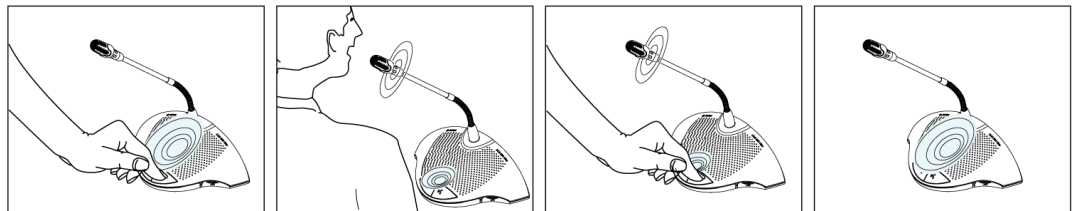
LED (A) in figure 6.3 shows Possible-To-Speak. When the LED has the white color this indicates the microphone can be switched on. When the microphone is switched on the color of the LED will change to red. If the maximum number of active microphones in the system is reached the LED will be off and the microphone can not be switched on.

The Possible-To-Speak indication can be disabled.

0 : indication disabled.

1 : indication enabled (default).

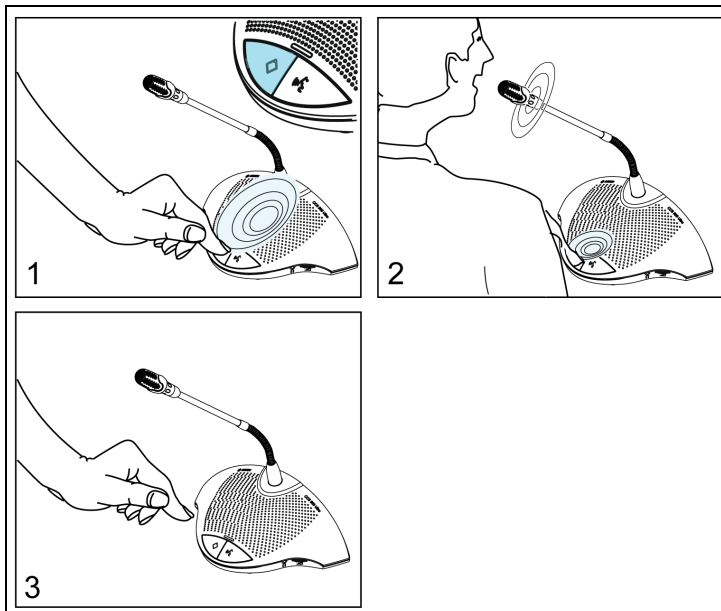
### 6.4 Using the microphone button of the Chairman Unit



**Figure 6.4**

Pressing the microphone button on a Chairman Unit always activates the chairman microphone, independent of the selected microphone mode. Chairman Units don't switch off automatically.

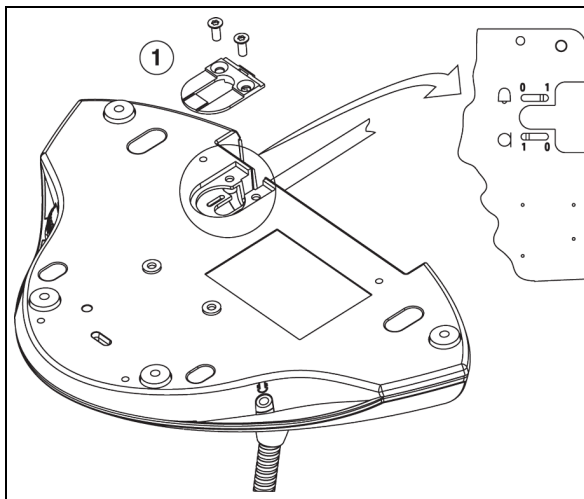
## 6.5 Using the priority button



**Figure 6.5**

Pressing the priority button of the Chairman Unit (Figure 6.5 “1”) may be indicated by a chime tone and will deactivate all active Delegate Units and activates the chairman microphone (Figure 6.5 “2”). Release of the priority button (Figure 6.5 “3”) will either leave the Delegate Units deactivated or activates them again (depending on priority mode settings).

## 6.6 Priority mode settings in Chairman Unit



**Figure 6.6**

Remove the cable relief bracket (1) to set the chime and microphone switches in the required position at priority.

- 0 = : no chime at priority
- 1 = : (default) chime at priority
- 0 = : delegate microphones permanently OFF at priority
- 1 = : (default) microphones temporary OFF at priority

### 6.7 Open mode

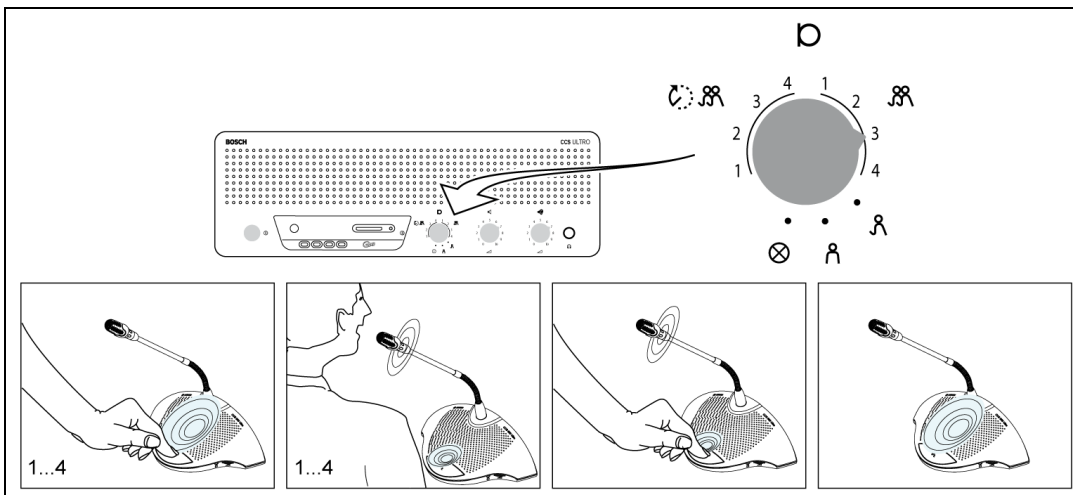


Figure 6.7

Select the max. number (1, 2, 3 or 4) of delegate microphones which can be active at the same time.



#### NOTICE!

Chairmen can always switch on and off their microphones and are not included in the maximum number.

### 6.8 Open mode with auto switch-off

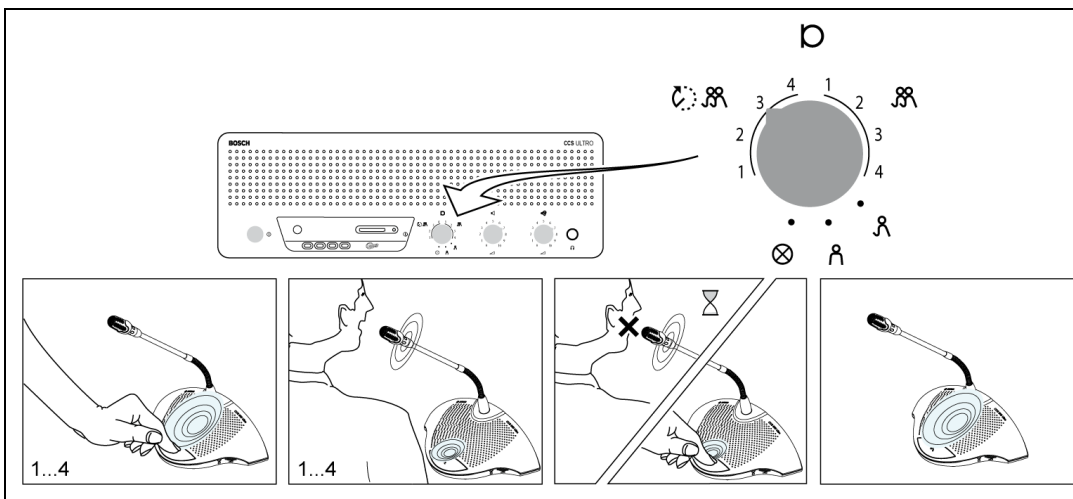


Figure 6.8

Select the max. number (1, 2, 3 or 4) of delegate microphones which can be activated by the delegates themselves at the same time. If the speaker is silent for approximately 30 seconds the active microphone switches off automatically.

## 6.9 Override mode

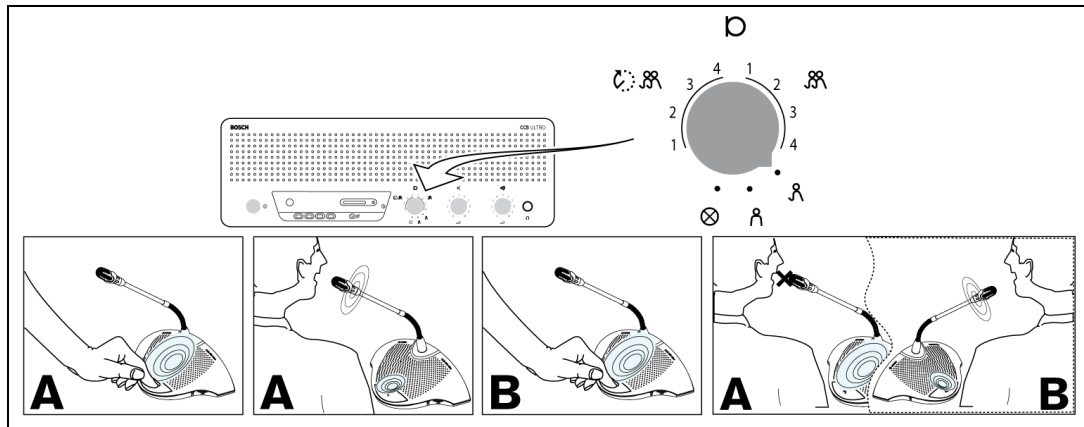


Figure 6.9

Each time a delegate presses the microphone button on a Delegate Unit, it will override the currently active Delegate Unit. So only one delegate microphone is active at the same time. chairman microphones can always be switched on.

## 6.10 Chairman only mode

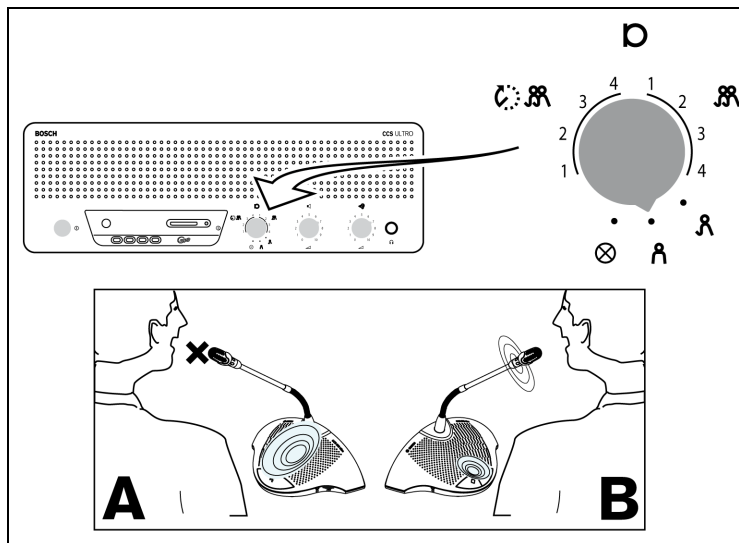
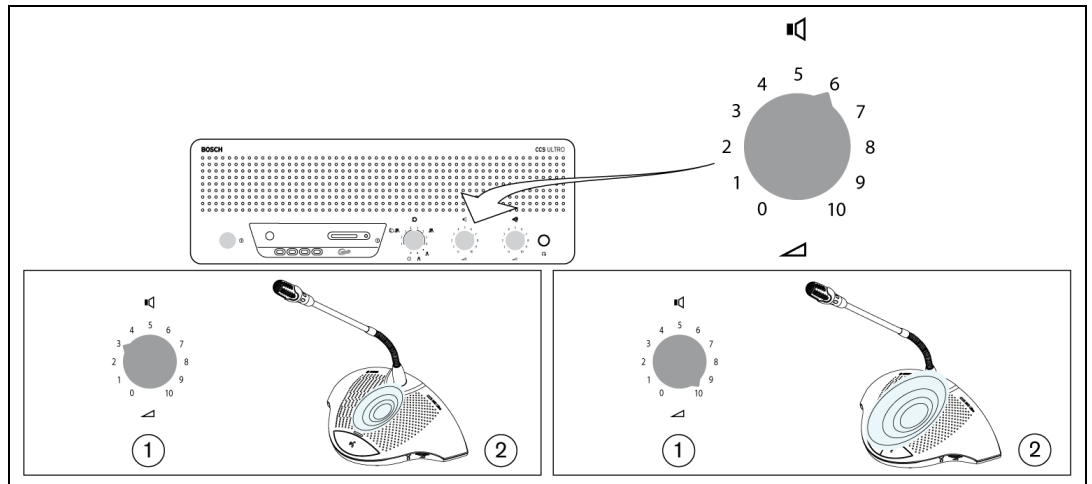


Figure 6.10

Only the Chairman Units (B) can be activated. Delegates (A) can not switch on their microphones.

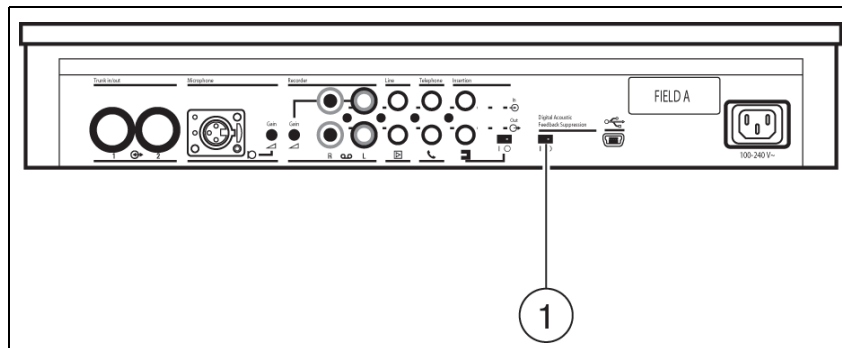
### 6.11 Volume control of the Delegate and Chairman Units



**Figure 6.11**

Turn the volume control (1) to set the volume of the loudspeakers of the Delegate and Chairman Units (2). Adjust for maximum level without feedback. In the fully counterclockwise position all loudspeakers are muted.

### 6.12 Volume control of the Delegate and Chairman Units



**Figure 6.12**

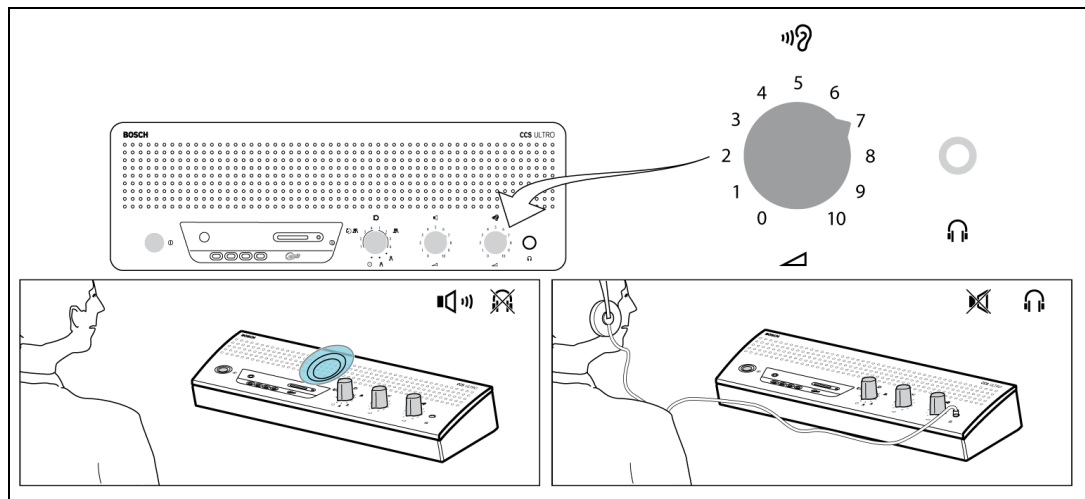
Put the Digital Acoustic Feedback Suppressor switch (1) in position "0" and adjust the loudspeakers for maximum level without feedback. Switch Digital Acoustic Feedback Suppression on by changing the switch (1) to position "1". Then set the loudspeaker volume to the required level, but increasing the volume level more than 2 or 3 steps is not recommended.



**NOTICE!**

With the use of Digital Acoustic Feedback Suppression the loudspeaker volume can be increased significantly before acoustic feedback appears. The maximum achievable volume gain depends on the acoustical environment and positioning of the units. Artefacts may occur during microphone switching at very high volume levels. In general the achievable increased volume gain is 4 - 6 dB. The Digital Acoustic Feedback Suppression is optimized for speech.

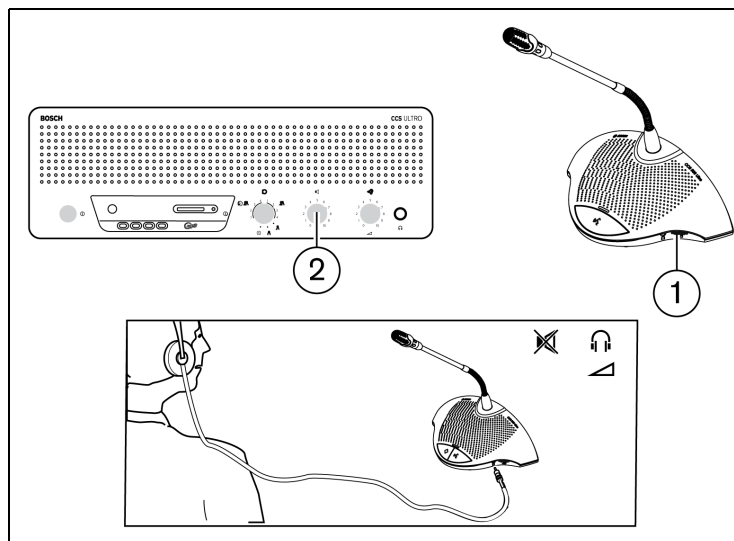
## 6.13 Monitoring volume control



**Figure 6.13**

Use the built-in loudspeaker or a headphone to monitor the discussion. Adjust the volume using the monitoring volume control. The maximum level is controlled by the setting of the volume control for Delegate and Chairman Units.

## 6.14 Using a headphone



**Figure 6.14**

Use the rotary volume control (1) to adjust the volume of the headphones connected to the left and/or right side of the units. Inserting a headphone jack mutes the loudspeaker. The maximum level depends on the setting of the volume control (2) on the CU.

## 7 Built-in MP3 recorder (CCS-CURD only)

### 7.1 Introduction

**NOTICE!**

Connect the Control Unit at least once every 6 months to the mains supply for 24 hours to keep the MP3 back-up battery charged.

The built-in MP3 recorder allows users to:

- record discussion
- listen to discussion before playing it back to the floor
- play discussion back to delegates

Recording is started and stopped by the user. The settings of the MP3 recorder can be changed so that recording only takes place when any one of the microphones is active (for more information, see section 7.3). The MP3 recorder will record the audio from external devices if connected.

When recording is activated, the MP3 recorder will automatically create an MP3 file, using the current date and time as the file name. Recorded files have a maximum duration of 60 minutes. After 60 minutes, the file will be automatically closed, and a new file will be created. This process is repeated as long as recording is active or until the SD card is full.

Recorded speech is saved on an SD card, which is inserted into the top of the unit (see following figure), or saved internally. After recording, the SD card can be removed, or the recorded speech can be downloaded to a PC by connecting a USB cable to the back of the CCS Control Unit.

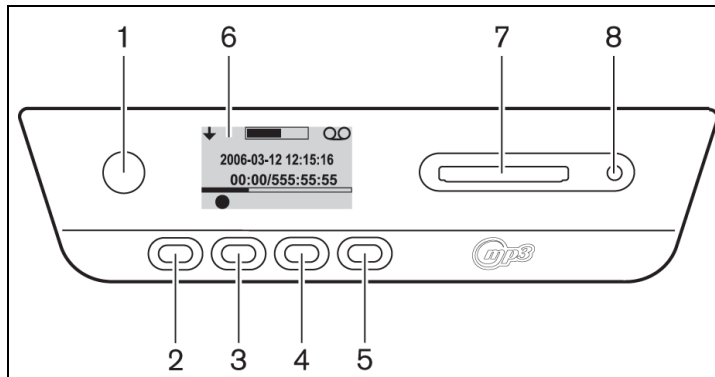
The MP3 recorder has a card exchange feature that allows the user to exchange the SD card during conversation without loss of discussion/audio (for a full explanation of this feature, see section 7.4.3).

Once discussion has been recorded, the user can choose to pre-listen to or playback the file (for more information, see section 7.5).

## 7.2 Overview

### 7.2.1 User display

The user display has five soft buttons for operating the MP3 recorder (see following figure).



**Figure 7.1** Overview of user display and buttons

1. Soft button 1
2. Soft button 2
3. Soft button 3
4. Soft button 4
5. Soft Button 5
6. User display: displays user data and icons (see section 7.2.3).
7. Slot for SD card: Slot for inserting the SD card.
8. LED for SD card: LED is on during recording.

### 7.2.2 Modes of operation

Refer to Figure 7.1

Use button (1) to select the mode of operation. An icon appears in the top right-hand corner of the display to show which mode is selected. The following modes are available (see following table).

**Table 7.1** Mode selected icons

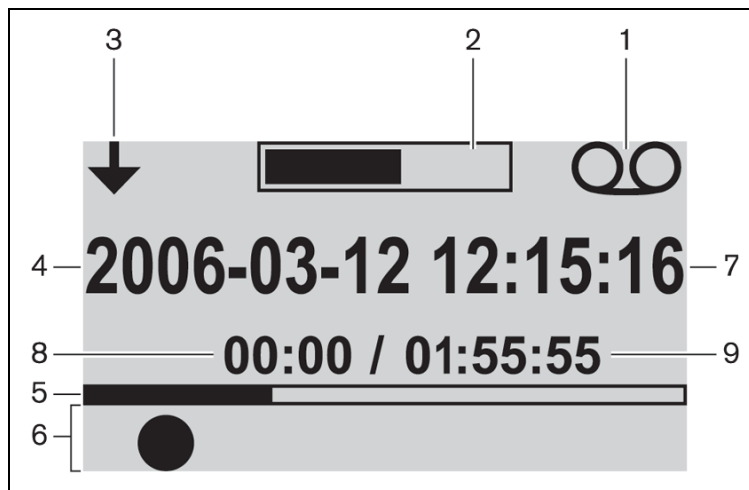
Icon	Mode selected
	Record
	Pre-listen
	Playback
	Set-up



### 7.2.3 Start-up screen

After powering up, the start-up screen is briefly displayed, which shows the name of the recorder, as well as the revision number of the software.

The software then automatically displays the Record screen (see following figure).



**Figure 7.2** Overview of record screen (after start-up)

1. Mode selected icon: Shows the selected mode
2. VU-meter: Shows the audio level during recording, pre-listening, and playback.
3. Change mode icon: Shows the user when another mode can be selected.
4. Date: Shows the date in year, month, day format.
5. Progress and separator line: during recording shows the amount of used/free memory. In pre-listen mode and playback mode shows how much of the file has been played.
6. Icons: The space underneath the Progress and separator line is reserved for icons. Various icons are used during recording, pre-listening, and playback. The icons vary according to the mode selected (for more information, see section 7.3 through section 7.5).
7. Time: Shows the time in hours, minutes, and seconds.
8. Time counter: Shows the elapsed time during recording, pre-listening, and playback.
9. Total time: In record mode, shows the remaining time in hours, minutes, and seconds. The timer counts down during recording; in pre-listening mode, and playback mode, shows the total time of the selected recorded session. Note: Total time is constantly displayed.

## 7.3 Setting up the MP3 recorder








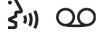




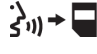
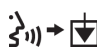


Use this mode to set-up the MP3 recorder. The following options are available (see following table for an overview of the set-up icons):

- Delete files
- Set the date
- Set the time
- Select the bit rate
- Set recording to continuous
- Set recording options

## 7.3.1

## Overview of set-up icons

Table 7.2 Overview of icons for navigating set-up screens

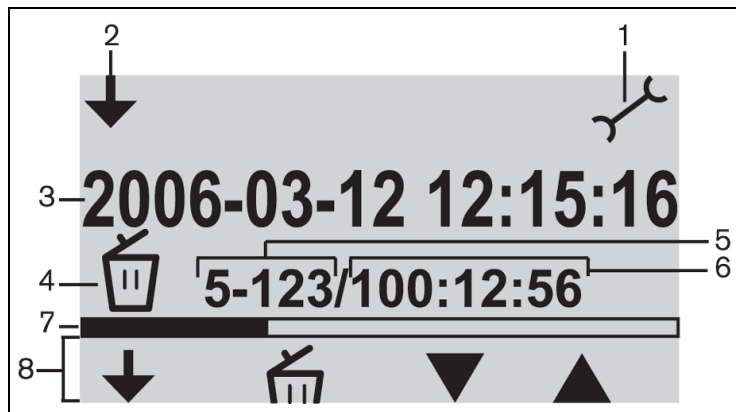
Icon	Icon name	Function of icon
	Next (displayed at lower left of set-up screen)	Go to next set-up screen. This icon is also displayed at the top left of the set-up screen to indicate that the other modes can be selected at any time, by pressing the change mode button (1).
	Select	Selects next value to change.
	Down	Decreases value, or selects another value or file.
	Up	Increases value, or selects another value or file.
	Date	Indicates that the date set-up screen is selected.
	Time	Indicates that the time set-up screen is selected.
	Bit rate	Indicates that the bit rate set-up screen is selected.
	Microphone recording	Unit will only record if one or more delegate microphones pick-up a signal, or if a signal is present on a external input.
	Continuous recording	Unit will continuous record.
	Confirm delete	Confirms file to be deleted.
	Delete file	Permanently deletes selected file.
	Cancel delete	Cancels the delete file command.
	Record to card	Sets up recording so that files are saved to the SD card. Data will still be saved to the internal memory during card exchange, as described in section 7.4.3.
	Record to memory	Sets up recording so that files are saved to the internal memory.
	Hourglass	Initializing SD card.
	SD card status	Card flashing at 2 Hz: card is initializing. Card flashing at 5 Hz: card is either: full, write protected, or incompatible.

### 7.3.2

#### Deleting files

Use this option to delete files.

1. Press the up or down button to select the file to delete. The filename will change on the display as the button is pressed.
2. Press the delete file button to delete the selected file.
3. Press the confirm delete button to confirm the file to delete permanently or cancel the delete command of the selected file by pressing the button “cancel delete”.
4. Press the select button to select the next value to change (see following section).



**Figure 7.3** Delete screen

1. Mode selected icon: Set-up mode is selected.
2. Change mode icon: Shows the user when another mode can be selected.
3. File name: Shows the name of the selected audio file (default name is the date and time of the recording).
4. Set-up item: Shows the selected set-up item.
5. File counter: Shows the selected file number and the total number of files.
6. Time counter: Shows the elapsed time of all recordings on disk.
7. Space usage and separator line: Shows the used capacity of all files and the free space on the SD card or internal memory.
8. Button icons: See table 7.2.



**NOTICE!**

With refer to the file counter in figure 7.3. If the total number of files exceeds 99 then the last digit or two digits might not be displayed.Example: if file 86 from all 120 files is selected it will be shown as 86-12.



**NOTICE!**

After deleting a file, the software jumps back to the delete file screen.

### 7.3.3 Setting the date and time



#### NOTICE!

To change settings in the set-up mode, you must follow the programmed sequence of events (there is no back button). To exit the set-up mode at any time, press the change mode button (button 1 at the left-side of the display).



**Figure 7.4** Set-up screen for date

Before using the MP3 recorder you should make sure that the date and time are correctly set. If necessary, adjust the date and time as follows: Refer to Figure 7.1

1. Press the change mode button (1) to select the set-up mode. When selected, the set-up icon should be shown in the top right-hand corner of the display (see following figure).
2. Press the select button (2) to change the date settings.
3. Press the up or down button (4 or 5) to change the value (year number), and then press the next button (3) to select the next value to change.
4. Set the date (year, month, and day) as described in the previous step, and then press the select button (2) to jump to the time set-up screen.
5. Set the time (hours, minutes, and seconds), using the same method as described in step 3, and then press the select button to jump to the bit rate set-up screen (see following section).

### 7.3.4 Selecting the bit rate

1. Press the up or down button to change the value (bit rate). The following bit rates are available:
  - 64 kbps
  - 96 kbps
  - 128 kbps
  - 192 kbps
  - 256 kbps
2. Press the select button to select the next value to change (see following section).

### 7.3.5 Continuous recording

---

**NOTICE!**

If more than 50 Delegate Units are connected (by using additional Control Units), the option “record when one or more microphones are active” may not work correctly (also see section 5.2).

Also the noise level of external inputs can have impact on the proper functioning of the option “record when one or more microphones are active”.

---

1. Press the down button to switch between constant recording or record when one or more microphones are active (see table 7.2).
2. Press the select button to select the next value to change (see following section).

### 7.3.6 Set internal/ external recording options

Refer to figure 7.1

1. Press the down button to switch between record to the SD card or record to the internal memory (refer to table 7.2).
2. Press the change mode button (1) to exit the set-up mode.










## 7.4 Record

Use the record mode to record discussion. Before recording, make sure the SD card is inserted into the slot to the right of the display, or the unit is set to internal recording.

### 7.4.1 Overview of record icons

The following icons are displayed/used during recording.

**Table 7.3** Overview of record icons

Icon	Icon name	Function of icon
	Record selected	Shows the user that the Record mode is selected.
	Record	Starts recording session.
	Pause	Pauses recording session. When recording has been paused, the record icon will appear and start to flash. Press the record button to reactivate recording.
	Stop	Stops recording session
	New file	Creates a new file during recording (recording continues, but the data is saved under a new file name. The time counter on the display is also reset).
	Change card	Allows the user to change the SD card during recording (see section 7.4.3).
	Change card timer	Graphically shows the user how many seconds are remaining before the new card must be inserted.
	Hourglass	Icon will flash at 2Hz when the SD card is being initialized. During the initialization all control buttons are disabled.
	SD card status	Card flashing at 2 Hz: card is missing. Card flashing at 5 Hz: card is either full, write protected, or incompatible. Note: This icon is not shown during the card exchange procedure or when the internal memory option is selected in the set-up mode. If during the card exchange procedure a card is not inserted within one minute of pressing the change card button, this icon will appear.

## 7.4.2 Making a recording

Refer to figure 7.1.

Make a recording as follows:

1. Press the change mode button to select the record mode. When selected, the record icon is shown in the top right-hand corner of the display.



### NOTICE!

If the unit has just been powered up, the record mode is automatically selected.

2. Press the record button (2) to start recording. The blue LED next to the SD card holder will come on and the time counter will start.
3. During recording you can:
  - press the pause button (2) to temporarily halt recording.
  - press the stop button (3) to stop recording and close the recording session.
  - press the new file button (4) to create a new file.
  - change the SD card by pressing the change card button (5) on the display (see section 7.4.3).



### NOTICE!

The record feature supports a maximum of 999 recorded files.

## 7.4.3 Exchanging SD cards during recording

The SD card can be changed at any time during recording, but the new card must be inserted within one minute of pressing the change card button (5). This allows discussion to continue even when the SD card is full. If the new card is not inserted within 1 minute, the card missing icon will be shown and recording will stop. The last minute of recorded discussion will also be lost.

When there is 5 minutes of recording time left on the card, three short beeps will be played through the monitor loudspeaker. This is to warn the operator to change the card. If the card is not changed within 5 minutes, a long beep will be played through the monitor loudspeaker at 0 minutes, and the card exchange function will automatically start.



### NOTICE!

If a headphone is connected to the Control Unit, the beeps can only be heard via the headphone, and the blue LED will flash quickly (5Hz).

Refer to figure 7.1.

Change the card as follows:

1. Remove the current card.
  - When the card is removed, the recorder will continue recording to the internal buffer of the recorder.
2. Insert the new card within one minute of pressing the change card button (5).
  - When the new card is inserted, a new file is automatically started using the current date and time as the file name. This file includes the previous 90 seconds of discussion (60 seconds from the internal buffer and the last 30 seconds of discussion from the previous card). This feature also allows transcription to take place off-line before the meeting has ended.

## 7.5 Pre-listen and Playback

Refer to figure 7.1.

Pre-listen and Playback are almost the same. The difference between these two modes is described below:

### Pre-listen

Use the pre-listen mode to listen to discussion before playing it back to the floor. The audio signal is present at the monitor loudspeaker or the headphones, if connected.










### Playback

Use the playback mode to play the discussion back to delegates. The audio signal is present at the monitor loudspeaker or the headphones, if connected, as well as at the delegate loudspeakers.

### 7.5.1 Overview of pre-listen/ playback icons

The following icons are displayed/used during pre-listening and playback.

**Table 7.4** Overview of pre-listen and playback icons

Icon	Icon name	Function of icon
	Pre-listen	When pre-listen is selected, this icon is shown at the top right-hand corner of the display.
	Playback	When playback is selected, this icon is shown at the top right-hand corner of the display.
	Start	Starts the pre-listen or playback session depending on mode selected. The first file in the list will be played. As soon as this file has been played, the next valid file will start.
	Pause	Pauses the pre-listen or playback session, depending on the mode selected. When pre-listen or playback has been paused, the start icon will appear and start to flash. Press the start button to continue with the session.
	Stop	Stops the pre-listen or playback session depending on the mode selected.
	Previous	Skips to previous file (also see fast rewind). Icon is only shown if a valid file is available. Note: Jumps to the last file in the list once the beginning of the list has been reached.
	Next	Skips to next file (also see fast forward). Icon is only shown if a valid file is available. Note: Jumps to the first file in the list once the end of the list has been reached.
	Fast rewind	Fast rewinds to the beginning of the file (10x normal speed). Icon will only appear if the previous button is pressed and held in for 2 seconds or longer.
	Fast forward	Fast forwards to the end of the file (10x normal speed). Icon will only appear if the next button is pressed and held in for 2 seconds or longer.



## 7.5.2

### Pre-listening to and playing back files

Refer to figure 7.1

To pre-listen to or playback files:

1. Press the change mode button (1) to select the required mode. The pre-listen or playback icon is shown in the top right-hand corner of the display, depending on the mode selected.
2. Press the start button (2) to pre-listen to or playback files. The MP3 tag is shown on the display. If there is no MP3 tag, the filename is shown instead.
3. During pre-listening or playback you can:
  - switch between pre-listen and playback, by pressing the change mode button (1).
  - press the pause button to temporarily halt playback.
  - press the stop button to stop pre-listening or playback.
  - skip to the previous track (press and hold to fast rewind).
  - skip to the next track (press and hold to fast forward).

## 8 Troubleshooting

Problem	Possible cause	Solution
Temporary no microphone reaction, and no sound or distorted sound from unit loudspeakers.	Trunk-line overload.	Reduce load on the trunk-lines by reducing the number of units, and/or the length of the trunk cables.
<b>Acoustic Feedback:</b>	Loudspeaker volume too loud.	Reduce gain using volume control for Delegate/Chairman Unit loudspeakers on CU.
		If available, switch on Digital Acoustic Feedback Suppression.
	Distance between units too small (microphone to loudspeaker of other units).	Increase distance between units.
		If available, switch on Digital Acoustic Feedback Suppression.
	Too close to microphone units, when using open headphones.	Increase the distance between headphone and microphone or disconnect headphones when not in use.
		If available, switch on Digital Acoustic Feedback Suppression.
Part of system not working.	Interrupted trunk-line cabling.	Check the trunk-line cabling connections between the units and the CU, also use the test function on the CU.
<b>No sound via delegate / chairman loudspeakers:</b>	Insertion switch in wrong position.	Check if insertion switch at the rear of the CU is in position "1".
	Volume control position.	Check if the volume control for delegate/chairman loudspeakers on the CU is not in the fully counter clockwise position.
	Microphone active or headphone connected.	Notice: units with active microphone or connected headphone(s) have their loudspeakers switched off.
<b>Hourglass flashes very fast:</b>	The SD card is full.	Check SD card, and remove files if necessary.
		Use a PC to format the card. Use FAT or FAT32. Note: NTFS is incompatible.
	The SD card is write protected.	Remove SD card, and disable the write protection.

<b>Problem</b>	<b>Possible cause</b>	<b>Solution</b>
	The SD card is incompatible.	Use a PC to format the SD card. Use FAT or FAT32. Note: NTFS is incompatible.
		Notice: SD cards larger than 2 GB are not supported.
<b>Hourglass flashes for a long time after inserting the SD card:</b>	The SD card is almost full.	Remove old files/recordings.
		Format the SD card.
	The SD card is too slow.	Use a faster SD card.
<b>Recorded files missing on SD card:</b>	The SD card was removed during recording.	Always stop recording before removing SD card.
		Select SD card exchange before removing SD card.
<b>User display is blank:</b>	During CU power up, the USB cable was connected to the CU and PC, while the PC was switched off.	Make sure the USB cable is not connected during CU power up.
		Make sure the PC is fully operational before connecting the USB cable.

## 9 Technical data

### 9.1 System Electrical and Electro-Acoustical Characteristics

#### 9.1.1 The Control Unit (CU)

Mains voltage	100 - 240 Vac $\pm$ 10%, 50/60 Hz
Current consumption	max. 0.9 A (100 Vac) - 0.3 A (240 Vac)
Power Consumption	60 W
DC supply to contribution units	24V +/- 1V (current limited)
Rated output for all trunks	1.25A
Sample frequency:	
- Recording	32Khz
- Playback	32, 44.1 and 48Khz
Bite rate:	
- Recording	64, 96, 128, 192, 256 Kbit/sec
- Playback	any bit rate
Media:	
- MP3-tag	Compatible conform ID3V2
- Memory card	Any SD card up to 2 GB compatible (high speed cards are advised).
Line, telephone coupler and insertion in/outputs (unbalanced):	
- Input sensitivity	-14 dBV / +11dBV (nominal/maximum)
- Input impedance	33 kOhm
- Output level	-14 dBV / +11dBV (nominal/maximum)
- Output impedance	500 Ohm
Recorder in/output (unbalanced) - mono:	
- Input sensitivity	- 20 dBV / + 5 dBV (nominal/maximum)
- Input sensitivity adjustment	+0 / -20 dB
- Input impedance	47 kOhm (for L and R channel)
- Output level	- 20 dBV/ + 5 dBV (nominal/maximum)
- Output impedance	500 Ohm
External microphone input (balanced):	
- Input sensitivity	- 56 dBV (- 6 dBV via included adapter)
- Input sensitivity adjustment	+6 dB / -6 dB
- Phantom supply	12V +/- 1V, 2 x 680 W (+/- 2%). (Phantom supply is not available when using the included adapter)
Monitor loudspeaker:	
- Output level at 0.5 m	72 dB SPL/ 82 dB SPL (nominal/maximum)
- Frequency response	320 Hz ... 10 kHz (-10 dB, ref. 1kHz)
- Impedance	25 ohm

- Volume control	50 dB attenuation range
Monitor headphone:	
- Output level	-8 dBV/ +2 dBV (nominal/maximum)
- Output impedance	22 Ohm
- Output connection	stereo jack socket (mono output)
- Allowed impedance	any impedance
- Volume control	50 dB attenuation range
Loudspeaker volume control:	
- For Delegate and Chairman Units	mute (50 dB attenuation) + 10 steps of 1.9 dB
Limiter threshold level:	
- To unit loudspeaker / headphone	10 dB above nominal level
Gain reduction due to NOM:	
- Number of Open Microphones	NOM +/- 1 dB
Auto microphone switch-off function selectable on the Control and Power Supply Unit	After approximately 30 sec. not speaking (sound level below 64 dB SPL) the microphone is automatically switched off
System limits:	Number of Delegate / Chairman Units connected to CU
- Maximum in total	50
- Maximum per trunk output	25
- Maximum trunk length using CCS 900 Ultro standard cabling	100 m (328 ft.)

**Table 9.1** Recording capacity

Recording capacity	Card size			Internal memory
	512 MB	1 GB	2 GB	
Bit rate	512 MB	1 GB	2 GB	225 MB
64	17h:14m	34h:28m	64h:56m	7h:34m
96	11h:29m	22h:59m	45h:58m	5h:02m
128	8h:37m	17h:14m	34h:28m	3h:47m
192	5h:44m	11h:29m	22h:58m	2h:31m
256	4h:18m	8h:37m	17h:14m	1h:53m
The times mentioned in the table might slightly differ depending on the SD card.				

**9.1.2****Combined Units**

Delegate microphones with transmission links to delegate headphones and auxiliary outputs.

Frequency response	25 Hz - 12.5 kHz tolerances according to IEC 60914 standard
Total harmonic distortion at overload:	
- at nominal input level (85 dB SPL)	< 0.5%
- at max. input level (110 dB SPL)	< 3%

**9.2****Mechanical Data****9.2.1****Control and Power Supply Unit**

Mounting	free standing on a table top or mounted in a 19" rack (requires 3HU (Height Units) with bracket set LBB 3311/00). Information about how to make the necessary brackets for table flush mounting is included.
Dimensions (HxWxD)	84 x 361 x 143 mm (with 5.5 mm feet)3.4 x 14.2 x 5.6 in (with 0.22 in feet).
Weight	CCS-CU version 1.6 kg (3.5 lb.)CCS-CUD version 1.7 kg (3.7 lb.)CCS-CURD version 1.8 kg (4.0 lb.)

**9.2.2****Delegate/Chairman Units**

Dimensions (H x W x D) without mic.	71 x 220 x 140 mm (2.80 x 8.66 x 5.51 in)
Height with mic. in horizontal position	132 mm (5.20 in)
Length of mic. from mounting surface	CCS-DS and CCS-CMS version, 313 mm (12.3 in)CCS-DL and CCS-CML version, 488 mm (19.2 in)
Weight	Approx. 1 kg (2.2 lb.)
Color (top and base)	Charcoal (PH 10736)

## 9.3 General data

### 9.3.1 System Environmental Conditions

Temperature range:	
- Storage and transport	-20 to +70°C (-4 to +158°F)
- Operational	+5 to +45°C (+41 to 113°F)
Ambient humidity:	
- Operational	20% - 95% RH
- Storage and transport	0% - 99% RH
Air pressure	600 mBar - 1100 mBar
Safety	according to EN 60065 and according to UL 60065
Resistance to shock, vibration, bump and transport	according to IEC 60068, 5G acceleration
EMC emission	according to EN 55103-1 and FCC rules (part 15), class A
EMC immunity	according to EN 55103-2
EMC approvals	affixed with the CE mark
Mains harmonics	EN 61000-3-2 and EN61000-3-3
Transport	AV18-Q0681

**9.3.2****Equipment Range**

Control and power supply unit	CCS-CU CCS-CUD (with Digital Acoustic Feedback Suppression) CCS-CURD (with recording and Digital Acoustic Feedback Suppression)
19" rack mounting set	LBB 3311/00
Bracket for flush mounting	Can be made locally according to the illustrations in chapter 10.2
Delegate Unit(s)	CCS-DS (short microphone) CCS-DL (long microphone)
Chairman Unit(s)	CCS-CMS (short microphone) CCS-CML (long microphone)
Installation cable with connectors	LBB 3316/00 (100 m)
Extension cables	LBB 3316/05 (5m) LBB 3316/10 (10m)
Cable locking clamps	LBB 4117/00 (set of 25 pieces)
Cable clamp	DCN-DISCLM (set of 25 pieces)
Transport suitcase for 10 Delegate/Chairman Units with standard microphone	CCS-SC10
Transport suitcase for one CU, 6 Delegate/Chairman Units with standard (short) microphone and some extension cables	CCS-SC6



# 10 Appendix

## 10.1 Pin Configuration

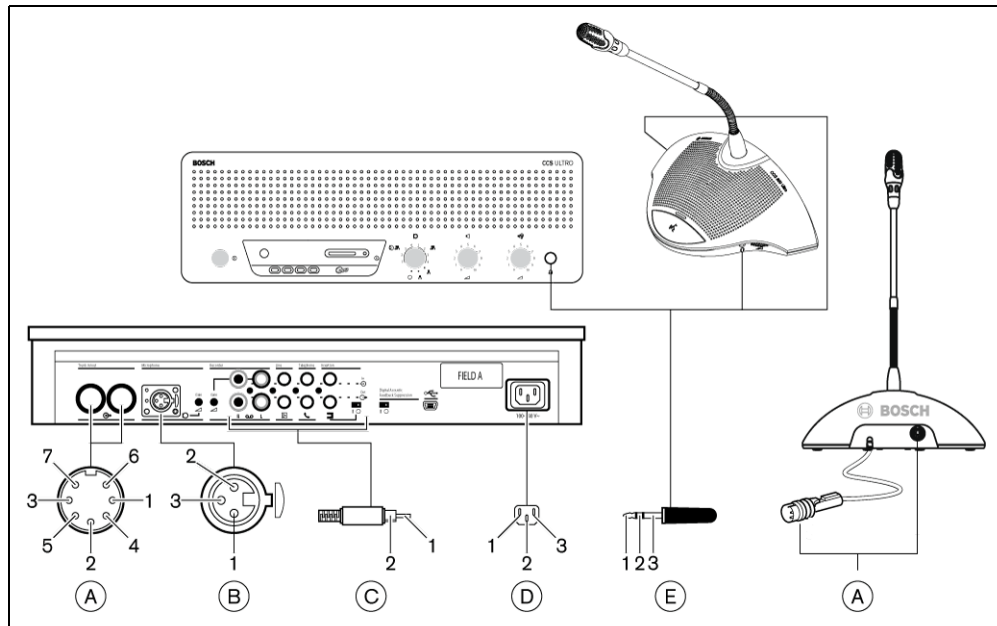


Figure 10.1 Connector overview

### 10.1.1 Trunk Connections (A)

1. Audio contribution line
2. GND
3. Audio distribution line
4. Control line 1
5. Control line 2
6. V+ supply
7. V- supply

### 10.1.2 External Microphone (XLR) (B)

1. GND (0V, phantom supply)
2. Signal+ (+12V, phantom supply)
3. Signal- (-12V, phantom supply)
  - Phantom supply according to DIN45596

### 10.1.3 CINCH Connector (C)

1. Signal+
2. Screen

### 10.1.4 Mains Connector (D)

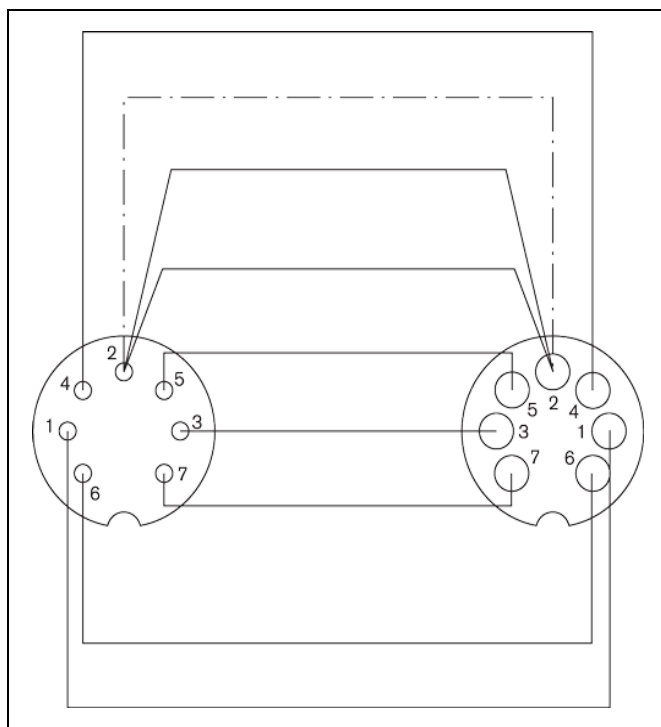
1. Mains
2. Earth
3. Mains

### 10.1.5 Headphone Jack-plug (3.5mm) (E)

1. Tip (Signal+)
2. Ring (Signal -)
3. Sleeve (Electrical earth/screen)

## 10.1.6

## Schematics of connectors LBB 3316/00



**Figure 10.2** Connector pin connections

Pin number	Color
1	White
2	Shield
3	Violet
4	Yellow
5	Green
6	Red
7	Blue

## 10.2 Mounting Instructions

The CU can be attached in three different ways:

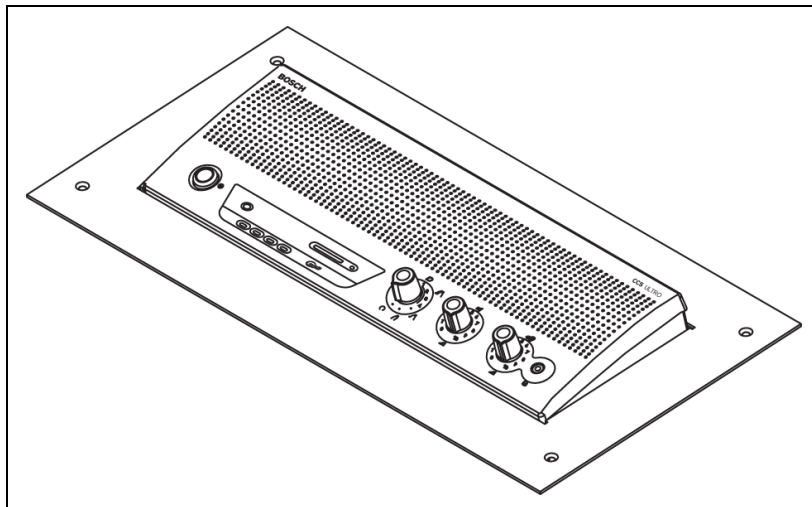
- In a 19" rack making use of the 19" rack mounting set LBB 3311/00. Place a blank 1HU panel above the CU to have sufficient space for cable connections.
- Mounted into a table using the flush mount bracket.
- On a table. Therefore drill four holes in the table and fasten the CU with four M3 screws (B).

The Delegate and Chairman Units can only be attached on a table. Therefore drill two holes in the table and fasten the unit with two self tapping M3 screws (A).

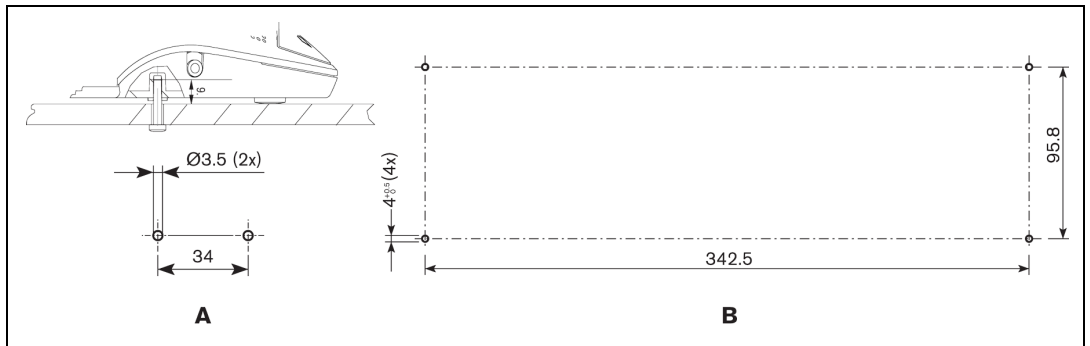


**NOTICE!**

When the device is attached to a flat surface it no longer conforms to the UL/CSA approval.



**Figure 10.3** Mounting into a table



**Figure 10.4** Mounting on a table

### 10.3 Bracket for Flush Mounting

The drawing below gives the necessary information how to make a bracket for flush mounting the CU into a table.

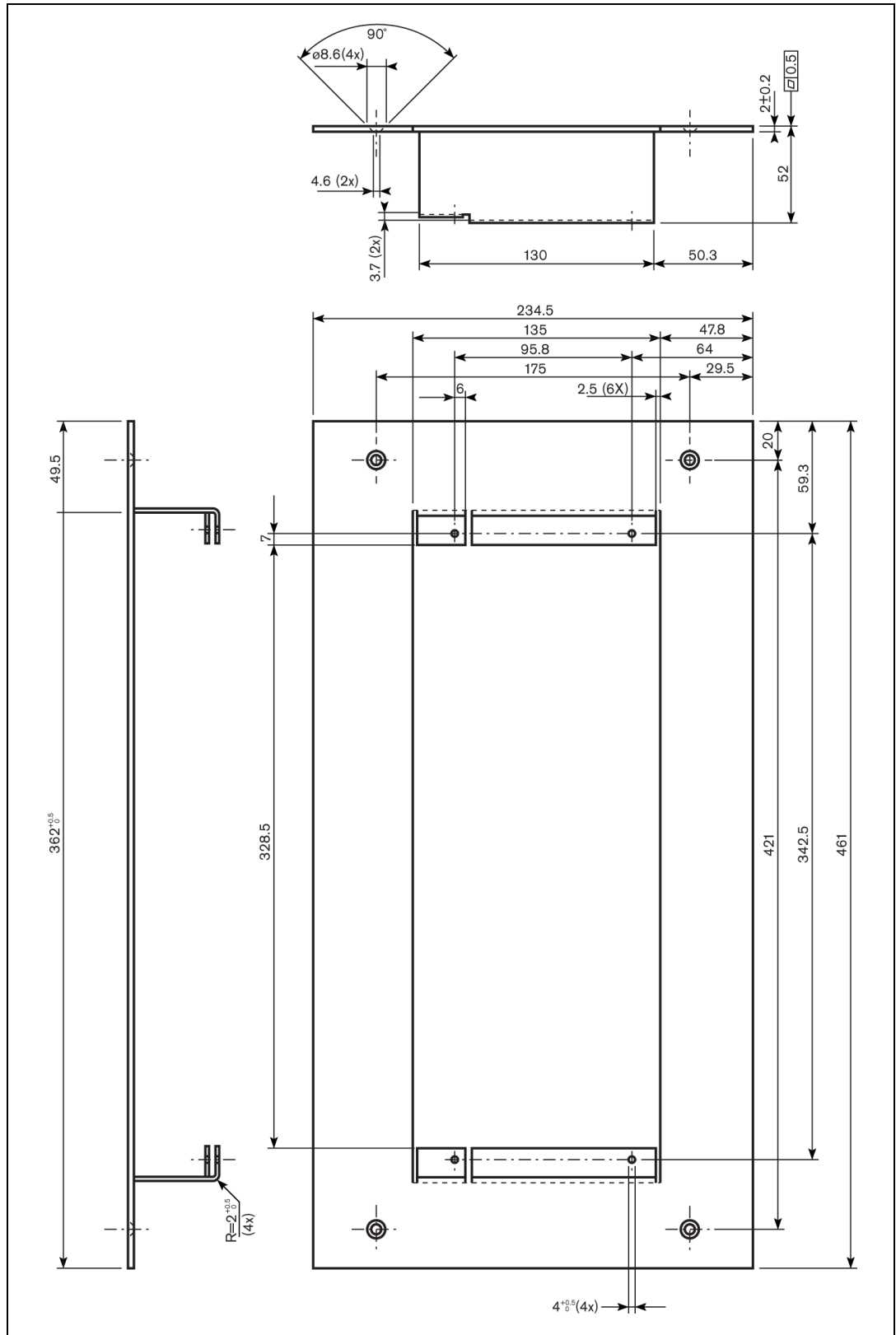


Figure 10.5



**Bosch Security Systems B.V.**

Kapittelweg 10  
4800 RA Breda  
The Netherlands

**[www.boschsecurity.com](http://www.boschsecurity.com)**

© Bosch Security Systems B.V., 2010