

# IntuiKey Script Application

ISA



**BOSCH**



# Table of Contents

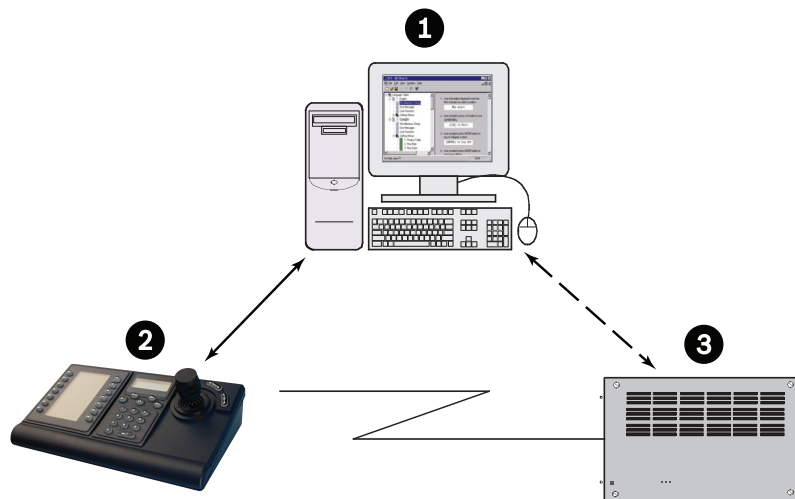
<b>1</b>	<b>Introduction</b>	<b>4</b>
1.1	Parts List	4
1.2	Requirements	5
1.3	ISA Input Locales	5
1.4	Optional Accessories	5
<b>2</b>	<b>Installation</b>	<b>6</b>
2.1	Software Installation	6
2.2	RS-232 Connection	6
2.3	Keyboard Preparation	6
<b>3</b>	<b>ISA Startup</b>	<b>8</b>
<b>4</b>	<b>ISA Views</b>	<b>9</b>
4.1	Tree Control (Left Pane)	9
4.2	Forms (Right Pane)	10
4.2.1	Language Table Forms	10
<b>5</b>	<b>ISA Menus</b>	<b>11</b>
5.1	File Menu	11
5.2	View Menu	12
5.3	Transfer Menu	12
5.4	Server Menu	14
5.5	Window Menu	15
5.6	Help Menu	15
<b>6</b>	<b>Using the ISA</b>	<b>16</b>
6.1	Editing Text	16
6.1.1	Text Alignment	16
6.1.2	Inputting Font Characters by their Numeric Codepoints	16
6.2	Link Buttons	17
6.3	Configuring Softkeys to Execute Command Script (CCL) Macros	17
6.3.1	Assigning Macros	18
6.3.2	Organizing ISA Configuration (.int) Files per Allegiant Server (.alg) Files	18
<b>A</b>	<b>IntuiKey Font Tables</b>	<b>19</b>
<b>B</b>	<b>RS-232 Interface Cable Detail</b>	<b>29</b>
<b>C</b>	<b>Allegiant Command Scripts and the ISA</b>	<b>30</b>

# 1 Introduction

The Bosch IntuiKey Script Application (ISA) is used to customize Command Script (CCL) macro screens of BOSCH IntuiKey Series keyboards.

The ISA creates Configuration (.int) files which contain the Command Script language tables. In general, a language table is a collection of text that an IntuiKey keyboard displays on its LCD, plus a collection of commands that allow IntuiKey keyboards to execute Command Script (CCL) macros on a BOSCH Allegiant® matrix switcher/controller system.

When a new ISA Configuration (.int) file is created, it contains several language tables. The language tables are identical in function, but their text has been translated into different languages including: English, Spanish, Dutch, French, German, Italian, Polish, Portuguese, Czech, Russian, Slovak, Swedish, Norwegian, Finnish, Danish, Turkish, Hungarian, Greek, Simplified Chinese, Traditional Chinese, Korean, or Arabic.



**Figure 1.1** Typical Application Using the ISA

Ref	Description
1	PC Running ISA Software and Optional Allegiant Configuration Software Programs
2	RS-232 Interface to IntuiKey Series Keyboard
3	RS-232 Interface to Allegiant System (optional)

## 1.1 Parts List

The following table lists the necessary parts:

Description	Part
ISA software, User manual, and latest IntuiKey series keyboard firmware (only if needed)	Download from IntuiKey Software Updates found at the Bosch Security Systems Web site at <a href="http://www.boschsecurity.com">http://www.boschsecurity.com</a>
RS-232 Interface cable	Purchase separately (Bosch p/n S1385) or construct as shown in <i>Section B RS-232 Interface Cable Detail, page 29.</i>

## 1.2 Requirements

The KBD-SFTCFG can only be used on PCs which have the following:

- Pentium® CPUs (or better)
- CD-Rom Drive
- 1 Serial (COM) Port (two if the Allegiant interface is used)
- 1 Parallel Port (if running Allegiant software)
- Microsoft® Windows 2000®, Windows XP®, Windows Vista (32 or 64 bit) or Windows Server 2003

## 1.3 ISA Input Locales

The ISA is compatible with any of the Windows® Input Locales available for a PC. However, it only accepts characters that are contained within the keyboard's font tables (see *Section A IntuiKey Font Tables, page 19*).

In Windows®, Input Locales are configured with the Control Panel's Regional Settings applet.

## 1.4 Optional Accessories

- Allegiant LTC 8059/00 Master Control Software for Windows® Program
- IntuiKey Firmware Upgrade Program (available from Bosch Security Systems Web site at <http://www.boschsecurity.com>).

## 2 Installation

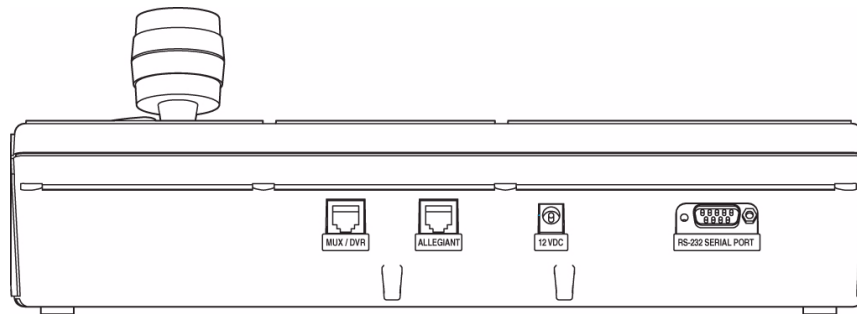
### 2.1 Software Installation

Copy the ISA installer file (ISA\_vXXX.exe) to a temporary directory. Double-click to begin the installation.

### 2.2 RS-232 Connection

All communication between the IntuiKey Series keyboard and the ISA is performed through an RS-232 interface. The interface cable can be purchased separately (Bosch p/n S1385) or constructed based on pinouts shown in *Section B RS-232 Interface Cable Detail, page 29*.

Connect one end of the RS-232 interface cable to the 9-pin RS-232 Serial Port located on the far right side of the rear of the IntuiKey keyboard. Connect the other end of the RS-232 interface cable to a COM port on the PC. The software supports the use of COM1 through COM16.



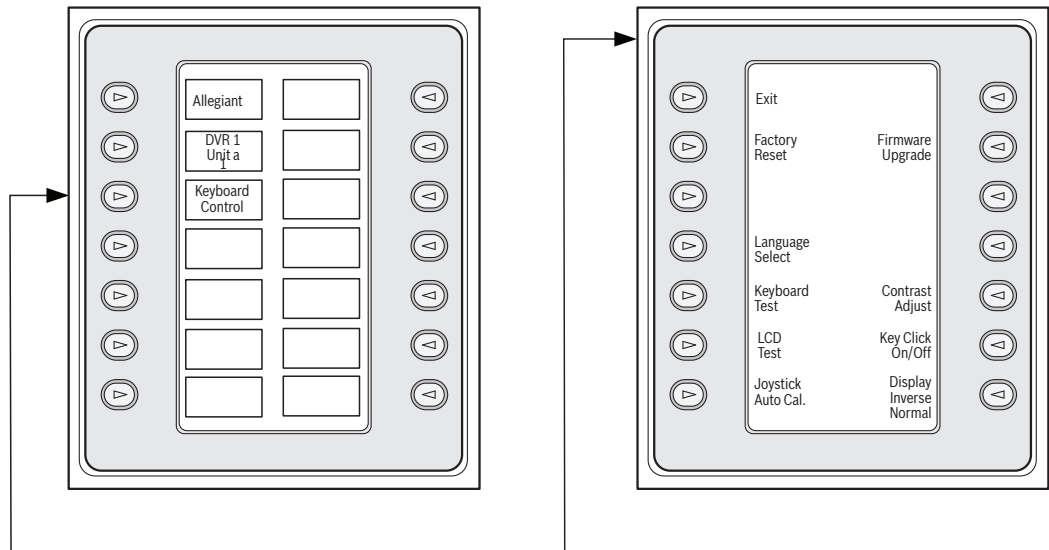
**Figure 2.1** IntuiKey Keyboard Rear Panel Showing 9-pin RS-232 Interface Connector

If an Allegiant software package (LTC 8059/00 or LTC 8850/00) is used simultaneously with the ISA, a second COM port must be available on the PC to interface with the Allegiant system's console port. Refer to the manual provided with the Allegiant software for more information.

### 2.3 Keyboard Preparation

Verify that the keyboard's firmware version is 1.94 or higher. The firmware version is shown on the IntuiKey keyboard's main menu when it is powered up. If the firmware version precedes version 1.94, a keyboard firmware update is required before it can be used with the ISA. Update the IntuiKey keyboard's firmware via the IntuiKey Firmware Update Utility, available from the Software Updates section of the Bosch Web site (<http://www.boschsecurity.com>).

**IMPORTANT:** Before the IntuiKey keyboard can respond to the external RS-232 communication, it must be placed in Bootloader mode. This is done by entering the IntuiKey keyboard's Firmware Upgrade menu which is accessed from the Keyboard Control option of the main product list selection screen. When prompted for the password, press the 1 and 0 numeric keypad buttons simultaneously.



**Figure 2.2** IntuiKey Keyboard Bootloader Menu Access

In certain circumstances, it may be necessary to enter the Bootloader mode when the keyboard is in a state where the menu selections are not visible or are otherwise unavailable. In this situation, Bootloader mode can be entered directly by simultaneously pressing the 1 and 0 numeric keypad buttons while the power/data cable is attached. The buttons must be released immediately when the keyboard begins to power up and initialize. For keyboards with Bootloader version 1.01 or higher, skip the next paragraph.

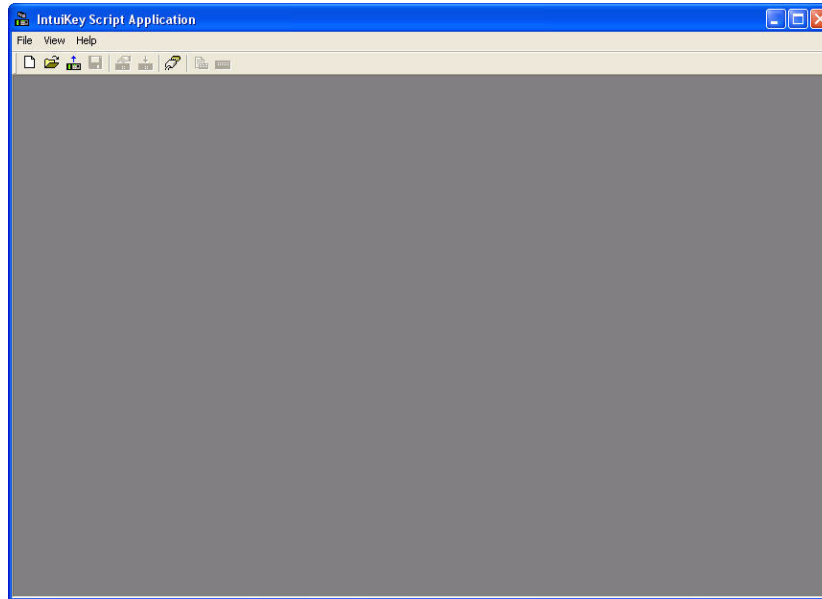
**For keyboard Bootloader version 1.00 only**, press the **CLR** button, power off/on the keyboard again, allow several seconds for it to boot up to a menu, then power it off/on while pressing the 1 and 0 numeric keypad buttons as the power/data cable is attached. *Release the buttons immediately when the keyboard begins to power up and initialize.*

The keyboard is now able to communicate with the ISA. If multiple transfers are required, the keyboard may need to be cleared and the Bootloader mode re-entered after each action.

Keyboard models containing the Bootloader version 1.05 or later support the ability to download / upload using a faster baud rate of 57600. Once in the Bootloader menu, check the lower right section of the larger LCD screen. If you see the option for baud rate selection, press the button to select the faster rate. The data transfers three (3) times faster compared to using the default baud rate of 19200.

### 3 ISA Startup

To start the ISA from the Windows® START menu, select Programs | ISA | IntuiKey Script Application. The ISA always starts in an empty state; i.e., with no ISA Configuration (.int) files opened for editing:



**Figure 3.1** ISA Main Screen

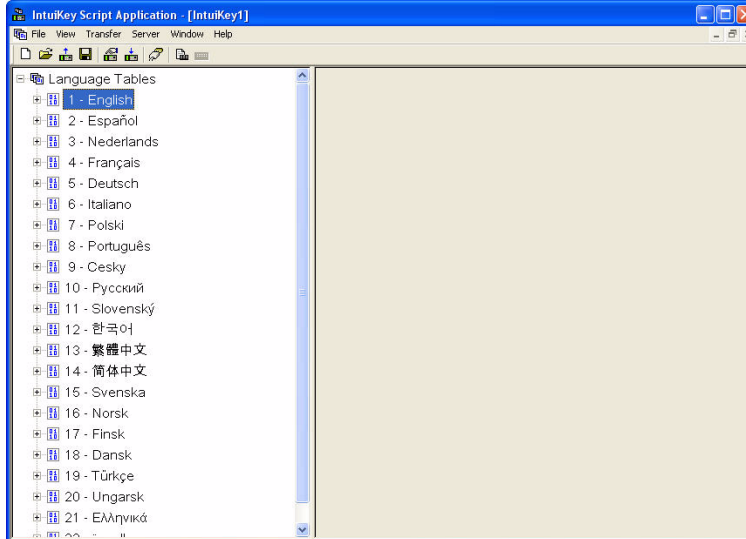
The ISA can support a maximum of 16 .int files open at once. Each file contains the following:

- One or more language tables
- An optional path to an Allegiant server (.alg) file
- A selection of a PC COM port (for RS-232 communication with the keyboard)
- ▶ To create a new ISA Configuration (.int) file, select **File | New**.



## 4 ISA Views

The ISA main screen is divided into two views. The left pane contains a tree control that allows a user to index through a set of language tables (and their main subsections). The right pane displays a form that corresponds to the subsection of the currently selected language table.



**Figure 4.1** ISA IntuiKey Configuration Screen

### 4.1 Tree Control (Left Pane)

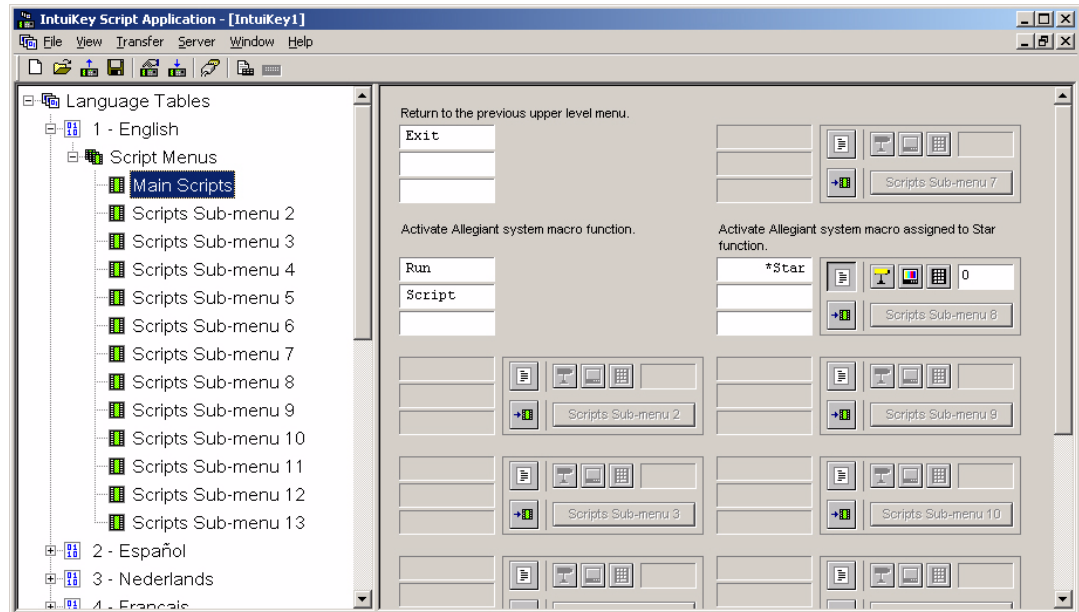
The tree's root node is labeled Language Tables. The root node's immediate subnodes (language table nodes) represent the language tables contained in the ISA Configuration (.int) file (e.g.: 1 – English).

A language table is associated with one of the font tables shown in *Section A IntuiKey Font Tables*.

Each language table node has a script menu subnode. The script menu subnode has several subnodes which represent the command script screens available in the IntuiKey. When you select a subnode, the ISA displays a form in the right pane of the ISA main screen.

## 4.2 Forms (Right Pane)

The right pane of the ISA main screen contains forms which display portions of a language table's contents organized into groups of edit boxes and buttons. Each group appears directly beneath one or more lines of descriptive text which explains its significance.



**Figure 4.2** Forms Pane on the ISA Main Screen

### 4.2.1 Language Table Forms

Language table forms are displayed when a language table node has been selected in the tree control. This form displays the language table's name (Table Description) which is displayed in the keyboard's Language Select softkey menu.

Each language table node contains 13 softkey menu forms that are used to configure softkeys so that keyboards can activate (CCL) Command Script macros on Allegiant matrix switcher/controller systems. More information about configuring a language table's softkeys to activate Command Script macros is covered in a later section.

## 5 ISA Menus

Once an ISA Configuration (.int) file has been opened, the ISA menu displays its complete set of options. Some menu options also appear as toolbar buttons.

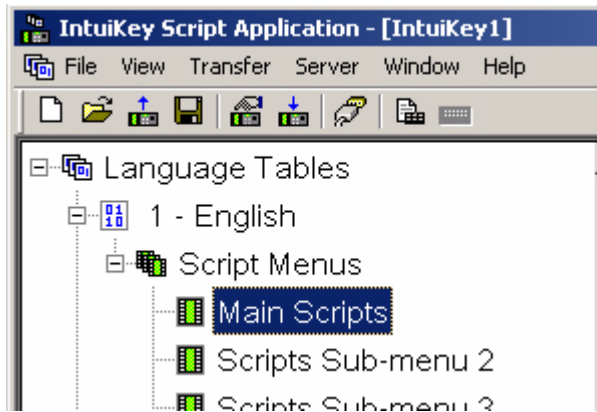






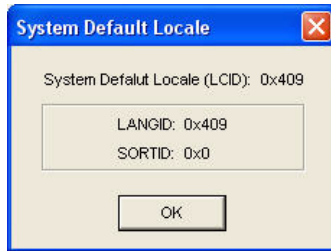
Figure 5.1 ISA IntuiKey Configuration Screen

### 5.1 File Menu

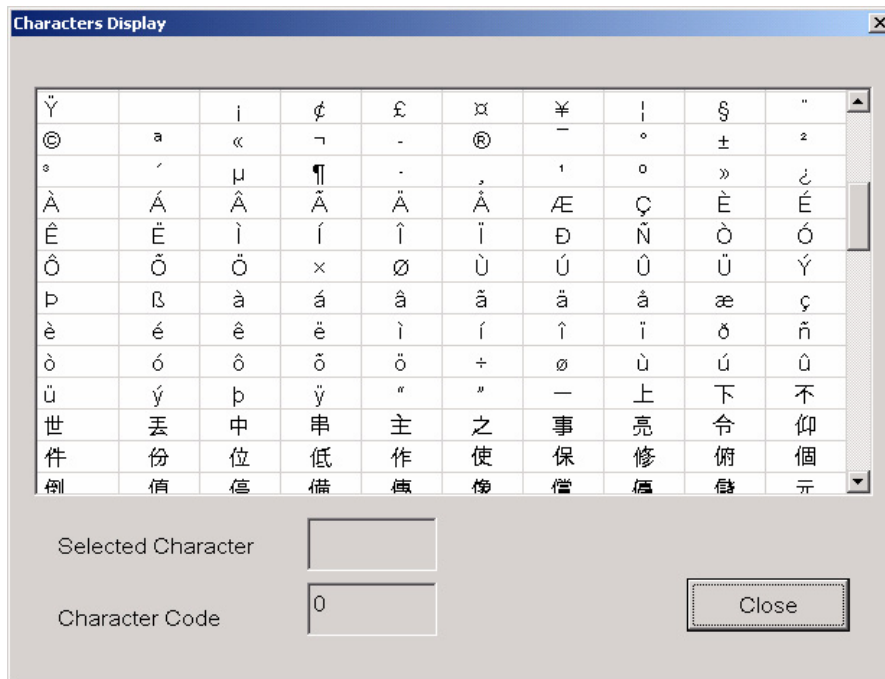
- **New** – Creates a new .int file  
Toolbar button: 
- **Open** – Opens an .int file  
Toolbar button: 
- **Import** – Load script menus from keyboard  
Toolbar button: 
- **Close** – Closes the currently active .int file
- **Save** – Saves the currently active .int file  
Toolbar button: 
- **Save As...** – Prompts for a new file name prior to saving the .int file
- **<Recent Files>** – Shows a list of previously edited files. If no files have ever been edited, this field will display the text Recent Files
- **Properties** – Displays a dialog which contains information about the currently active .int file

## 5.2 View Menu

- **System Default Locale...** displays Windows®'s default locale information. It is only necessary to access this information if requested by Technical Support personnel



- **Shows Characters Used** - opens a window that displays the available characters in the font table associated with the selected language.




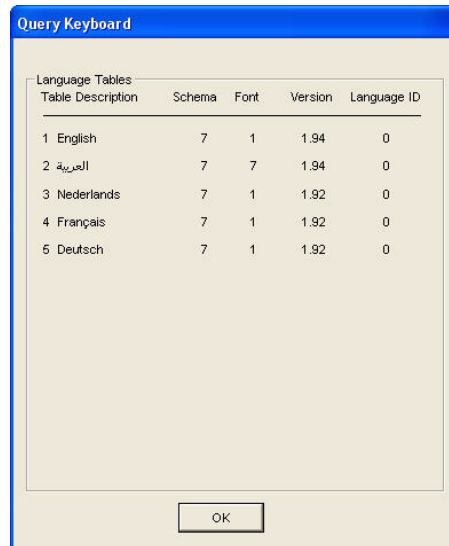
## 5.3 Transfer Menu

These options are used when communicating with IntuiKey keyboards.


NOTE: the keyboard must be in Bootloader mode before these options can be performed (see Keyboard Preparation section).

- **Query Keyboard...** (this command requires that the keyboard be in Bootloader mode – see *Section 2.3 Keyboard Preparation, page 6*) – queries the keyboard for its current configuration data. Most of this information is only required when requested by Technical Support personnel.

Toolbar button: 



- **Download...** (this command requires that the keyboard be in Bootloader mode – see Keyboard Preparation section) – invokes the Download dialog which allows language tables to be transferred from the currently active IntuiKey Configuration (.int) file to the keyboard.


Toolbar button: 

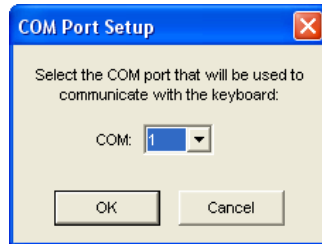
The language tables are transferred when the Download button is clicked. During the transfer, another dialog displays the progress of the operation.



**Figure 5.2** Download Language Table

- **Configure COM Port...** invokes a dialog for selecting a PC COM port that is used to communicate with an IntuiKey keyboard. Selections are limited to COM1 through COM16.

Toolbar button: 




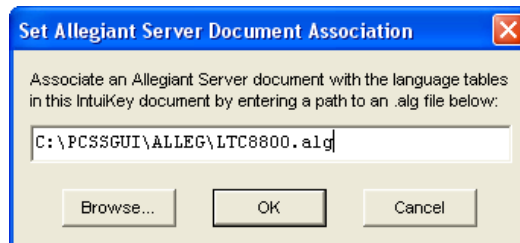
**Figure 5.3** COM Port Setup dialog box

## 5.4

### Server Menu


- **Set Allegiant Server Document Association...** (either the Allegiant LTC 8059/00 Master Control Software for Windows® or the LTC 8850/00 Allegiant GUI software must be installed on the PC for this option to be enabled) – opens a dialog which allows an Allegiant server (.alg) pathname to be stored in conjunction with the currently active IntuiKey Configuration (.int) file. When configuring keyboard softkeys to execute Allegiant Command Scripts, this feature allows a user to easily refer to the corresponding macros that have been programmed in the Allegiant's software configuration program.

Toolbar button: 



**Figure 5.4** Associate an Allegiant Server Document

- **Launch Allegiant Server** (either the Allegiant LTC 8059/00 Master Control Software for Windows® or the LTC 8850/00 Allegiant GUI software must be installed on the PC for this option to be enabled) – launches the Allegiant server (.alg) file specified in the **Server | Set Allegiant Server Document Association... option.**

Toolbar button: 

If the .alg file is available, the BOSCH GUI Allegiant Server dialog is displayed. If intending to make changes to the .alg file's Command Script macros, a user must log-in with an installer level profile. The default installer profile has the user name Installer and password 1. Refer to the Allegiant server software manual for additional information.



Figure 5.5 Allegiant Server login

## 5.5 Window Menu

- **Cascade** – arranges multiple .int files in an overlapped fashion.
- **Tile** – arranges multiple .int files in a nonoverlapping fashion. Some overlap may occur if the main window is too small for a completely nonoverlapped display.
- **Arrange Icons** – arranges minimized (iconified) .int files in a nonoverlapping fashion.

## 5.6 Help Menu

- **About...** displays version/copyright information for the ISA.



## 6 Using the ISA

In general, the IntuiKey Script Application (ISA) allows users to configure softkeys so that keyboards can activate (CCL) Command Script macros on Allegiant matrix switcher/controller systems.

The subsections that follow explain how these and related tasks can be performed.

### 6.1 Editing Text

Any language table text that can be customized is displayed in an edit box in the form view of the language table. Only characters listed in the font table (as displayed in the program's **Status Bar**) associated with the current language table can be used. (See Appendix A for the keyboard's font tables.)

Consider the following sections when editing text.

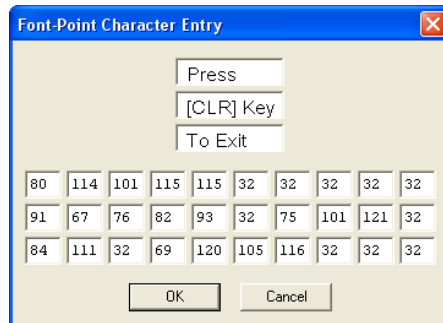
#### 6.1.1 Text Alignment

The alignment of text is significant, because it determines how that text is displayed on a keyboard's LCD. When text is customized, it is recommended that the original alignment be preserved to ensure consistency with other text fields being displayed.

#### 6.1.2 Inputting Font Characters by their Numeric Codepoints

Generating some of the keyboard font's characters may be difficult with a standard PC keyboard, therefore the ISA allows text to be edited by inputting the characters' numbers (known as codepoints or font-points) instead (see Appendix A for a listing of fonts/codepoints). This is done using the **Font-Point Character Entry** dialog box.

When text is being modified in an edit box, the **Font-Point** dialog can be opened by holding down the Shift key and right-clicking the edit box or right-clicking the edit box and selecting **Codepoints...** from its context menu. If the edit box is a member of a group of edit boxes, the text from all of the edit boxes is displayed in the **Font-Point** dialog.



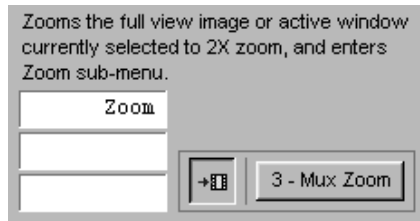
**Figure 6.1** Font Point Character Entry dialog box

It is possible to enter characters into a text field from the language's font table. Open the font table window by selecting the **Show Characters Used** option found in the **View** menu item. Position the cursor to the desired position in the text field to be edited. Find the desired character in the font table and double click on it. The character is inserted into the text field immediately.



## 6.2 Link Buttons

Pressing certain softkeys will cause the keyboard to display (link to) another softkey menu. In ISA menu forms, all softkeys that do this will have a link button next to them. The link button label contains the name of the menu to which it links. Clicking a link button causes the tree control to automatically select the target menu (and thus display the target menu’s form). Link buttons provide a means to traverse a language table’s softkey menus just as they would be traversed when using a keyboard (see Appendix A of the IntuiKey Keyboard Manual for a complete graph of the keyboard’s menu structure).



If the mouse pointer is held over a link button, a small tool-tip window with the entire name is displayed.

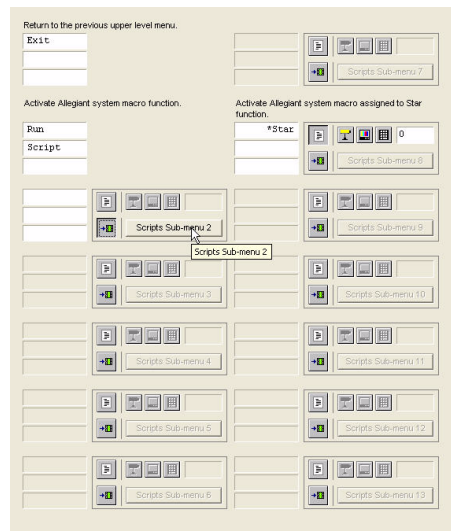


Figure 6.2 IntuiKey Configuration Screen showing a Tool-tip

## 6.3 Configuring Softkeys to Execute Command Script (CCL) Macros

The ISA allows users to configure softkeys on IntuiKey menus 80 and 83–94 to activate Command Control Language (CCL) Command Scripts on Allegiant matrix switcher/controller systems.

These menus are organized so that 2–13 must be accessed through main scripts. The softkeys on main scripts can be configured as a Command Script or as a link to a predetermined menu (2–13).

### 6.3.1 Assigning Macros

Any softkey on main script and 2–13 can be assigned to execute a Command Script macro if it has a macro button. Clicking the macro button so that it is in its down state allows the user to enter a 6-digit (normal) macro in the accompanying edit box.



The softkey can be configured as a 2-digit offset macro by clicking the small keypad button so that it is in its down state. When offset macros are executed on the keyboard, the user is required to enter an additional 4-digit number to complete the macro.



By selecting the camera icon button, it is possible to configure an offset macro such that the camera number currently selected by the keyboard automatically completes the macro. When using this option, the operator is no longer required to enter an additional 4-digit number after pressing the softkey macro button.



In a similar fashion, if the monitor icon button is selected, the monitor number currently selected by the keyboard automatically completes the macro.



See *Section C Allegiant Command Scripts and the ISA, page 30* for more information on Command Script macros.

Refer to the Allegiant PC Software Manual and the Allegiant Command Console Language (CCL) Manual for more information on writing Command Script macros.

### 6.3.2 Organizing ISA Configuration (.int) Files per Allegiant Server (.alg) Files

If the optional Allegiant software is installed on the PC, each ISA Configuration (.int) file, can be associated with a single Allegiant Server (.alg) filename. This is done so the user configuring softkeys to execute Command Script macros can quickly refer back to the Allegiant Server (.alg) file containing those Command Scripts.

# A IntuiKey Font Tables

The number appearing below each character is its codepoint.

**Keyboard Font Table 1 - English, Spanish, Dutch, French, German, Italian, Portuguese**

SPACE	!	"	#	\$	%	&	'	(	)	*	+	,	-	.	/
32	33	34	35	36	37	38	39	40	41	42	43	44	45	46	47
<b>0</b>	<b>1</b>	<b>2</b>	<b>3</b>	<b>4</b>	<b>5</b>	<b>6</b>	<b>7</b>	<b>8</b>	<b>9</b>	<b>:</b>	<b>;</b>	<b>←</b>	<b>=</b>	<b>→</b>	<b>?</b>
48	49	50	51	52	53	54	55	56	57	58	59	60	61	62	63
<b>@</b>	<b>A</b>	<b>B</b>	<b>C</b>	<b>D</b>	<b>E</b>	<b>F</b>	<b>G</b>	<b>H</b>	<b>I</b>	<b>J</b>	<b>K</b>	<b>L</b>	<b>M</b>	<b>N</b>	<b>O</b>
64	65	66	67	68	69	70	71	72	73	74	75	76	77	78	79
<b>P</b>	<b>Q</b>	<b>R</b>	<b>S</b>	<b>T</b>	<b>U</b>	<b>V</b>	<b>W</b>	<b>X</b>	<b>Y</b>	<b>Z</b>	<b>[</b>	<b>\</b>	<b>]</b>	<b>↑</b>	<b>_</b>
80	81	82	83	84	85	86	87	88	89	90	91	92	93	94	95
<b>`</b>	<b>a</b>	<b>b</b>	<b>c</b>	<b>d</b>	<b>e</b>	<b>f</b>	<b>g</b>	<b>h</b>	<b>i</b>	<b>j</b>	<b>k</b>	<b>l</b>	<b>m</b>	<b>n</b>	<b>o</b>
96	97	98	99	100	101	102	103	104	105	106	107	108	109	110	111
<b>p</b>	<b>q</b>	<b>r</b>	<b>s</b>	<b>t</b>	<b>u</b>	<b>v</b>	<b>w</b>	<b>x</b>	<b>y</b>	<b>z</b>	<b>{</b>	<b> </b>	<b>}</b>	<b>~</b>	
112	113	114	115	116	117	118	119	120	121	122	123	124	125	126	127
<b>€</b>	<b>,</b>	<b>f</b>	<b>„</b>	<b>…</b>	<b>†</b>	<b>‡</b>	<b>^</b>	<b>%</b>	<b>Š</b>	<b>&lt;</b>	<b>Œ</b>			<b>Ž</b>	
128	129	130	131	132	133	134	135	136	137	138	139	140	141	142	143
<b>‘</b>	<b>’</b>	<b>“</b>	<b>”</b>	<b>•</b>	<b>-</b>	<b>—</b>	<b>~</b>	<b>™</b>	<b>š</b>	<b>&gt;</b>	<b>œ</b>			<b>ž</b>	<b>ÿ</b>
144	145	146	147	148	149	150	151	152	153	154	155	156	157	158	159
<b>ı</b>	<b>¢</b>	<b>£</b>	<b>¤</b>	<b>¥</b>	<b>¦</b>	<b>§</b>	<b>¨</b>	<b>©</b>	<b>ª</b>	<b>«</b>	<b>¬</b>	<b>_</b>	<b>®</b>	<b>-</b>	
160	161	162	163	164	165	166	167	168	169	170	171	172	173	174	175
<b>°</b>	<b>±</b>	<b>²</b>	<b>³</b>	<b>´</b>	<b>µ</b>	<b>¶</b>	<b>·</b>	<b>,</b>	<b>¹</b>	<b>º</b>	<b>»</b>				<b>ı</b>
176	177	178	179	180	181	182	183	184	185	186	187	188	189	190	191
<b>À</b>	<b>Á</b>	<b>Â</b>	<b>Ã</b>	<b>Ä</b>	<b>Å</b>	<b>Æ</b>	<b>Ç</b>	<b>È</b>	<b>É</b>	<b>Ê</b>	<b>Ë</b>	<b>Ì</b>	<b>Í</b>	<b>Î</b>	<b>Ï</b>
192	193	194	195	196	197	198	199	200	201	202	203	204	205	206	207
<b>Ð</b>	<b>Ñ</b>	<b>Ò</b>	<b>Ó</b>	<b>Ô</b>	<b>Õ</b>	<b>Ö</b>	<b>×</b>	<b>Ø</b>	<b>Ù</b>	<b>Ú</b>	<b>Û</b>	<b>Ü</b>	<b>Ý</b>	<b>Þ</b>	<b>ß</b>
208	209	210	211	212	213	214	215	216	217	218	219	220	221	222	223
<b>à</b>	<b>á</b>	<b>â</b>	<b>ã</b>	<b>ä</b>	<b>å</b>	<b>æ</b>	<b>ç</b>	<b>è</b>	<b>é</b>	<b>ê</b>	<b>ë</b>	<b>ì</b>	<b>í</b>	<b>î</b>	<b>ï</b>
224	225	226	227	228	229	230	231	232	233	234	235	236	237	238	239
<b>Ë</b>	<b>ñ</b>	<b>ò</b>	<b>ó</b>	<b>ô</b>	<b>õ</b>	<b>ö</b>	<b>÷</b>	<b>ø</b>	<b>ù</b>	<b>ú</b>	<b>û</b>	<b>ü</b>	<b>ý</b>	<b>Ë</b>	<b>ÿ</b>
240	241	242	243	244	245	246	247	248	249	250	251	252	253	254	255

## Keyboard Font Table 2- Cyrillic

space	!	"	#	\$	%	&	'	(	)	*	+	,	-	.	/
32	33	34	35	36	37	38	39	40	41	42	43	44	45	46	47
<b>0</b>	<b>1</b>	<b>2</b>	<b>3</b>	<b>4</b>	<b>5</b>	<b>6</b>	<b>7</b>	<b>8</b>	<b>9</b>	<b>:</b>	<b>;</b>	<b>&lt;</b>	<b>=</b>	<b>&gt;</b>	<b>?</b>
48	49	50	51	52	53	54	55	56	57	58	59	60	61	62	63
<b>@</b>	<b>A</b>	<b>B</b>	<b>C</b>	<b>D</b>	<b>E</b>	<b>F</b>	<b>G</b>	<b>H</b>	<b>I</b>	<b>J</b>	<b>K</b>	<b>L</b>	<b>M</b>	<b>N</b>	<b>O</b>
64	65	66	67	68	69	70	71	72	73	74	75	76	77	78	79
<b>P</b>	<b>Q</b>	<b>R</b>	<b>S</b>	<b>T</b>	<b>U</b>	<b>V</b>	<b>W</b>	<b>X</b>	<b>Y</b>	<b>Z</b>	<b>[</b>	<b>\</b>	<b>]</b>	<b>^</b>	<b>_</b>
80	81	82	83	84	85	86	87	88	89	90	91	92	93	94	95
<b>`</b>	<b>a</b>	<b>b</b>	<b>c</b>	<b>d</b>	<b>e</b>	<b>f</b>	<b>g</b>	<b>h</b>	<b>i</b>	<b>j</b>	<b>k</b>	<b>l</b>	<b>m</b>	<b>n</b>	<b>o</b>
96	97	98	99	100	101	102	103	104	105	106	107	108	109	110	111
<b>p</b>	<b>q</b>	<b>r</b>	<b>s</b>	<b>t</b>	<b>u</b>	<b>v</b>	<b>w</b>	<b>x</b>	<b>y</b>	<b>z</b>	<b>{</b>	<b> </b>	<b>}</b>	<b>~</b>	
112	113	114	115	116	117	118	119	120	121	122	123	124	125	126	127
<b>Ђ</b>	<b>Ѓ</b>	<b>,</b>	<b>ђ</b>	<b>„</b>	<b>…</b>	<b>†</b>	<b>‡</b>	<b>€</b>	<b>‰</b>	<b>Љ</b>	<b>‹</b>	<b>Њ</b>	<b>Ќ</b>	<b>Ѝ</b>	<b>Ў</b>
128	129	130	131	132	133	134	135	136	137	138	139	140	141	142	143
<b>ђ</b>	<b>‘</b>	<b>’</b>	<b>“</b>	<b>”</b>	<b>•</b>	<b>–</b>	<b>—</b>	<b>™</b>	<b>љ</b>	<b>›</b>	<b>њ</b>	<b>ќ</b>	<b>ћ</b>	<b>џ</b>	
144	145	146	147	148	149	150	151	152	153	154	155	156	157	158	159
<b>Ў</b>	<b>ў</b>	<b>Ј</b>	<b>Ѡ</b>	<b>Ѓ</b>	<b>Ѕ</b>	<b>Ї</b>	<b>Љ</b>	<b>Њ</b>	<b>Ћ</b>	<b>Ќ</b>	<b>«</b>	<b>»</b>	<b>•</b>	<b>®</b>	<b>Ї</b>
160	161	162	163	164	165	166	167	168	169	170	171	172	173	174	175
<b>°</b>	<b>±</b>	<b>І</b>	<b>і</b>	<b>ґ</b>	<b>μ</b>	<b>¶</b>	<b>·</b>	<b>ё</b>	<b>№</b>	<b>є</b>	<b>»</b>	<b>ј</b>	<b>ѕ</b>	<b>ѕ</b>	<b>ї</b>
176	177	178	179	180	181	182	183	184	185	186	187	188	189	190	191
<b>А</b>	<b>Б</b>	<b>В</b>	<b>Г</b>	<b>Д</b>	<b>Е</b>	<b>Ж</b>	<b>З</b>	<b>И</b>	<b>Й</b>	<b>К</b>	<b>Л</b>	<b>М</b>	<b>Н</b>	<b>О</b>	<b>П</b>
192	193	194	195	196	197	198	199	200	201	202	203	204	205	206	207
<b>Р</b>	<b>С</b>	<b>Т</b>	<b>У</b>	<b>Ф</b>	<b>Х</b>	<b>Ц</b>	<b>Ч</b>	<b>Ш</b>	<b>Щ</b>	<b>Ъ</b>	<b>Ы</b>	<b>Ь</b>	<b>Э</b>	<b>Ю</b>	<b>Я</b>
208	209	210	211	212	213	214	215	216	217	218	219	220	221	222	223
<b>а</b>	<b>б</b>	<b>в</b>	<b>г</b>	<b>д</b>	<b>е</b>	<b>ж</b>	<b>з</b>	<b>и</b>	<b>й</b>	<b>к</b>	<b>л</b>	<b>м</b>	<b>н</b>	<b>о</b>	<b>п</b>
224	225	226	227	228	229	230	231	232	233	234	235	236	237	238	239
<b>р</b>	<b>с</b>	<b>т</b>	<b>у</b>	<b>ф</b>	<b>х</b>	<b>ц</b>	<b>ч</b>	<b>ш</b>	<b>щ</b>	<b>ъ</b>	<b>ы</b>	<b>ь</b>	<b>э</b>	<b>ю</b>	<b>я</b>
240	241	242	243	244	245	246	247	248	249	250	251	252	253	254	255

**Keyboard Font Table 3 - Polish, Czech, Slovak**

space	!	"	#	\$	%	&	'	(	)	*	+	,	-	.	/
32	33	34	35	36	37	38	39	40	41	42	43	44	45	46	47
0	1	2	3	4	5	6	7	8	9	:	;	←	=	→	?
48	49	50	51	52	53	54	55	56	57	58	59	60	61	62	63
@	A	B	C	D	E	F	G	H	I	J	K	L	M	N	O
64	65	66	67	68	69	70	71	72	73	74	75	76	77	78	79
P	Q	R	S	T	U	V	W	X	Y	Z	[	\	]	↑	_
80	81	82	83	84	85	86	87	88	89	90	91	92	93	94	95
‘	a	b	c	d	e	f	g	h	i	j	k	l	m	n	o
96	97	98	99	100	101	102	103	104	105	106	107	108	109	110	111
p	q	r	s	t	u	v	w	x	y	z	{		}	~	
112	113	114	115	116	117	118	119	120	121	122	123	124	125	126	127
€		,		„	…	†	‡		‰	Š	‹	Ś	Ť	Ž	Ž
128	129	130	131	132	133	134	135	136	137	138	139	140	141	142	143
	‘	’	“	”	•	-	—		™	š	›	ś	t’	ž	ž
144	145	146	147	148	149	150	151	152	153	154	155	156	157	158	159
	˘	˘	ł	▣	Ą	;	§	¨	©	§	«	¬	-	®	Ž
160	161	162	163	164	165	166	167	168	169	170	171	172	173	174	175
°	±	˙	ł	˘	μ	¶	·	˙	ą	ş	»	Ł	˘	ł	ż
176	177	178	179	180	181	182	183	184	185	186	187	188	189	190	191
Ř	Á	Â	Ǽ	Ä	Ł	Ć	Ç	Č	É	Ę	Ě	Ě	Í	Î	Ď
192	193	194	195	196	197	198	199	200	201	202	203	204	205	206	207
Đ	Ń	Ň	Ó	Ô	Ŏ	Ö	×	Ř	Ů	Ú	Ů	Ü	Ý	Ť	ß
208	209	210	211	212	213	214	215	216	217	218	219	220	221	222	223
ř	á	â	ǽ	ä	ł	ć	ç	č	é	ę	ě	ě	í	î	ď
224	225	226	227	228	229	230	231	232	233	234	235	236	237	238	239
đ	ń	ň	ó	ô	ö	÷	ř	ů	ú	ú	ü	ý	ť	·	
240	241	242	243	244	245	246	247	248	249	250	251	252	253	254	255

**Keyboard Font Table 4 - Greek**

SPACE	!	"	#	\$	%	&	'	(	)	*	+	,	-	.	/
32	33	34	35	36	37	38	39	40	41	42	43	44	45	46	47
<b>0</b>	<b>1</b>	<b>2</b>	<b>3</b>	<b>4</b>	<b>5</b>	<b>6</b>	<b>7</b>	<b>8</b>	<b>9</b>	<b>:</b>	<b>;</b>	<b>&lt;</b>	<b>=</b>	<b>&gt;</b>	<b>?</b>
48	49	50	51	52	53	54	55	56	57	58	59	60	61	62	63
<b>@</b>	<b>A</b>	<b>B</b>	<b>C</b>	<b>D</b>	<b>E</b>	<b>F</b>	<b>G</b>	<b>H</b>	<b>I</b>	<b>J</b>	<b>K</b>	<b>L</b>	<b>M</b>	<b>N</b>	<b>O</b>
64	65	66	67	68	69	70	71	72	73	74	75	76	77	78	79
<b>P</b>	<b>Q</b>	<b>R</b>	<b>S</b>	<b>T</b>	<b>U</b>	<b>V</b>	<b>W</b>	<b>X</b>	<b>Y</b>	<b>Z</b>	<b>[</b>	<b>\</b>	<b>]</b>	<b>^</b>	<b>_</b>
80	81	82	83	84	85	86	87	88	89	90	91	92	93	94	95
<b>`</b>	<b>a</b>	<b>b</b>	<b>c</b>	<b>d</b>	<b>e</b>	<b>f</b>	<b>g</b>	<b>h</b>	<b>i</b>	<b>j</b>	<b>k</b>	<b>l</b>	<b>m</b>	<b>n</b>	<b>o</b>
96	97	98	99	100	101	102	103	104	105	106	107	108	109	110	111
<b>p</b>	<b>q</b>	<b>r</b>	<b>s</b>	<b>t</b>	<b>u</b>	<b>v</b>	<b>w</b>	<b>x</b>	<b>y</b>	<b>z</b>	<b>{</b>	<b> </b>	<b>}</b>	<b>~</b>	
112	113	114	115	116	117	118	119	120	121	122	123	124	125	126	127
<b>€</b>		<b>,</b>	<b>f</b>	<b>„</b>	<b>…</b>	<b>†</b>	<b>‡</b>		<b>‰</b>		<b>&lt;</b>				
128	129	130	131	132	133	134	135	136	137	138	139	140	141	142	143
	<b>‘</b>	<b>’</b>	<b>“</b>	<b>”</b>	<b>•</b>	<b>-</b>	<b>—</b>		<b>™</b>		<b>&gt;</b>				
144	145	146	147	148	149	150	151	152	153	154	155	156	157	158	159
	<b>¨</b>	<b>À</b>	<b>£</b>	<b>¤</b>	<b>¥</b>	<b>¦</b>	<b>§</b>	<b>¨</b>	<b>©</b>		<b>«</b>	<b>¬</b>	<b>_</b>	<b>®</b>	<b>-</b>
160	161	162	163	164	165	166	167	168	169	170	171	172	173	174	175
<b>°</b>	<b>±</b>	<b>²</b>	<b>³</b>	<b>´</b>	<b>µ</b>	<b>¶</b>	<b>·</b>	<b>È</b>	<b>É</b>	<b>Ì</b>	<b>»</b>	<b>⊙</b>	<b>½</b>	<b>Υ</b>	<b>Ω</b>
176	177	178	179	180	181	182	183	184	185	186	187	188	189	190	191
<b>Ï</b>	<b>A</b>	<b>B</b>	<b>Γ</b>	<b>Δ</b>	<b>E</b>	<b>Z</b>	<b>H</b>	<b>Θ</b>	<b>I</b>	<b>K</b>	<b>Λ</b>	<b>M</b>	<b>N</b>	<b>Ξ</b>	<b>O</b>
192	193	194	195	196	197	198	199	200	201	202	203	204	205	206	207
<b>Π</b>	<b>P</b>		<b>Σ</b>	<b>T</b>	<b>Υ</b>	<b>Φ</b>	<b>X</b>	<b>Ψ</b>	<b>Ω</b>	<b>Ï</b>	<b>ÿ</b>	<b>ά</b>	<b>έ</b>	<b>ή</b>	<b>ί</b>
208	209	210	211	212	213	214	215	216	217	218	219	220	221	222	223
<b>Û</b>	<b>α</b>	<b>β</b>	<b>Υ</b>	<b>δ</b>	<b>ε</b>	<b>ζ</b>	<b>η</b>	<b>θ</b>	<b>I</b>	<b>K</b>	<b>Λ</b>	<b>μ</b>	<b>v</b>	<b>ξ</b>	<b>ο</b>
224	225	226	227	228	229	230	231	232	233	234	235	236	237	238	239
<b>π</b>	<b>ρ</b>	<b>ς</b>	<b>σ</b>	<b>T</b>	<b>u</b>	<b>φ</b>	<b>X</b>	<b>ψ</b>	<b>ω</b>	<b>ï</b>	<b>ü</b>	<b>ó</b>	<b>ú</b>	<b>ώ</b>	
240	241	242	243	244	245	246	247	248	249	250	251	252	253	254	255

**Keyboard Font Table 5 - Turkish**

SPACE	!	"	#	\$	%	&	'	(	)	*	+	,	-	.	/
32	33	34	35	36	37	38	39	40	41	42	43	44	45	46	47
<b>0</b>	<b>1</b>	<b>2</b>	<b>3</b>	<b>4</b>	<b>5</b>	<b>6</b>	<b>7</b>	<b>8</b>	<b>9</b>	<b>:</b>	<b>;</b>	<b>&lt;</b>	<b>=</b>	<b>&gt;</b>	<b>?</b>
48	49	50	51	52	53	54	55	56	57	58	59	60	61	62	63
<b>@</b>	<b>A</b>	<b>B</b>	<b>C</b>	<b>D</b>	<b>E</b>	<b>F</b>	<b>G</b>	<b>H</b>	<b>I</b>	<b>J</b>	<b>K</b>	<b>L</b>	<b>M</b>	<b>N</b>	<b>O</b>
64	65	66	67	68	69	70	71	72	73	74	75	76	77	78	79
<b>P</b>	<b>Q</b>	<b>R</b>	<b>S</b>	<b>T</b>	<b>U</b>	<b>V</b>	<b>W</b>	<b>X</b>	<b>Y</b>	<b>Z</b>	<b>[</b>	<b>\</b>	<b>]</b>	<b>^</b>	<b>_</b>
80	81	82	83	84	85	86	87	88	89	90	91	92	93	94	95
<b>`</b>	<b>a</b>	<b>b</b>	<b>c</b>	<b>d</b>	<b>e</b>	<b>f</b>	<b>g</b>	<b>h</b>	<b>i</b>	<b>j</b>	<b>k</b>	<b>l</b>	<b>m</b>	<b>n</b>	<b>o</b>
96	97	98	99	100	101	102	103	104	105	106	107	108	109	110	111
<b>p</b>	<b>q</b>	<b>r</b>	<b>s</b>	<b>t</b>	<b>u</b>	<b>v</b>	<b>w</b>	<b>x</b>	<b>y</b>	<b>z</b>	<b>{</b>	<b> </b>	<b>}</b>	<b>~</b>	
112	113	114	115	116	117	118	119	120	121	122	123	124	125	126	127
<b>€</b>		<b>,</b>	<b>f</b>	<b>„</b>	<b>…</b>	<b>†</b>	<b>‡</b>	<b>^</b>	<b>‰</b>	<b>Š</b>	<b>‹</b>	<b>Œ</b>			
128	129	130	131	132	133	134	135	136	137	138	139	140	141	142	143
	<b>‘</b>	<b>’</b>	<b>“</b>	<b>”</b>	<b>•</b>	<b>–</b>	<b>—</b>	<b>~</b>	<b>™</b>	<b>š</b>	<b>›</b>	<b>œ</b>			<b>ÿ</b>
144	145	146	147	148	149	150	151	152	153	154	155	156	157	158	159
	<b>ı</b>	<b>¢</b>	<b>£</b>	<b>¤</b>	<b>¥</b>	<b>ı</b>	<b>§</b>	<b>¨</b>	<b>©</b>	<b>ª</b>	<b>«</b>	<b>¬</b>	<b>_</b>	<b>®</b>	<b>¯</b>
160	161	162	163	164	165	166	167	168	169	170	171	172	173	174	175
<b>°</b>	<b>±</b>	<b>²</b>	<b>³</b>	<b>´</b>	<b>µ</b>	<b>¶</b>	<b>·</b>	<b>,</b>	<b>¹</b>	<b>º</b>	<b>»</b>	<b>¼</b>	<b>½</b>	<b>¾</b>	<b>¿</b>
176	177	178	179	180	181	182	183	184	185	186	187	188	189	190	191
<b>À</b>	<b>Á</b>	<b>Â</b>	<b>Ã</b>	<b>Ä</b>	<b>Å</b>	<b>Æ</b>	<b>Ç</b>	<b>È</b>	<b>É</b>	<b>Ê</b>	<b>Ë</b>	<b>Ì</b>	<b>Í</b>	<b>Î</b>	<b>Ï</b>
192	193	194	195	196	197	198	199	200	201	202	203	204	205	206	207
<b>Ğ</b>	<b>Ñ</b>	<b>Ò</b>	<b>Ó</b>	<b>Ô</b>	<b>Õ</b>	<b>Ö</b>	<b>×</b>	<b>Ø</b>	<b>Ù</b>	<b>Ú</b>	<b>Û</b>	<b>Ü</b>	<b>ı</b>	<b>Ş</b>	<b>ß</b>
208	209	210	211	212	213	214	215	216	217	218	219	220	221	222	223
<b>à</b>	<b>á</b>	<b>â</b>	<b>ã</b>	<b>ä</b>	<b>å</b>	<b>æ</b>	<b>ç</b>	<b>è</b>	<b>é</b>	<b>ê</b>	<b>ë</b>	<b>ì</b>	<b>í</b>	<b>î</b>	<b>ï</b>
224	225	226	227	228	229	230	231	232	233	234	235	236	237	238	239
<b>ğ</b>	<b>ñ</b>	<b>ò</b>	<b>ó</b>	<b>ô</b>	<b>õ</b>	<b>ö</b>	<b>÷</b>	<b>ø</b>	<b>ù</b>	<b>ú</b>	<b>û</b>	<b>ü</b>	<b>ı</b>	<b>ş</b>	<b>ÿ</b>
240	241	242	243	244	245	246	247	248	249	250	251	252	253	254	255

Keyboard Font Table 6 - Simplified Chinese, Traditional Chinese, Korean

Hex	Dec	Char	Hex	Dec	Char	Hex	Dec	Char	Hex	Dec	Char	Hex	Dec	Char	Hex	Dec	Char
0100	256	가	0128	296	능	0150	336	른	0178	376	븐	01A0	416	앞	01C8	456	입
0101	257	각	0129	297	니	0151	337	름	0179	377	블	01A1	417	애	01C9	457	잇
0102	258	간	012A	298	다	0152	338	리	017A	378	브	01A2	418	액	01CA	458	자
0103	259	감	012B	299	단	0153	339	릭	017B	379	블	01A3	419	앨	01CB	459	작
0104	260	값	012C	300	달	0154	340	린	017C	380	비	01A4	420	야	01CC	460	잠
0105	261	개	012D	301	당	0155	341	림	017D	381	빠	01A5	421	어	01CD	461	장
0106	262	거	012E	302	대	0156	342	립	017E	382	빨	01A6	422	언	01CE	462	재
0107	263	검	012F	303	덤	0157	343	마	017F	383	사	01A7	423	얼	01CF	463	저
0108	264	것	0130	304	데	0158	344	말	0180	384	삭	01A8	424	업	01D0	464	적
0109	265	격	0131	305	도	0159	345	매	0181	385	삽	01A9	425	없	01D1	465	전
010A	266	결	0132	306	돌	015A	346	먹	0182	386	상	01AA	426	에	01D2	466	절
010B	267	겁	0133	307	돔	015B	347	멀	0183	387	새	01AB	427	엔	01D3	467	점
010C	268	경	0134	308	동	015C	348	멈	0184	388	색	01AC	428	엘	01D4	468	접
010D	269	계	0135	309	되	015D	349	메	0185	389	생	01AD	429	역	01D5	469	정
010E	270	고	0136	310	땀	015E	350	면	0186	390	서	01AE	430	연	01D6	470	제
010F	271	공	0137	311	두	015F	351	명	0187	391	선	01AF	431	영	01D7	471	조
0110	272	과	0138	312	드	0160	352	모	0188	392	설	01B0	432	오	01D8	472	종
0111	273	관	0139	313	득	0161	353	목	0189	393	성	01B1	433	옥	01D9	473	좌
0112	274	광	013A	314	든	0162	354	무	018A	394	세	01B2	434	온	01DA	474	주
0113	275	교	013B	315	등	0163	355	문	018B	395	셋	01B3	435	옴	01DB	475	중
0114	276	구	013C	316	디	0164	356	미	018C	396	셔	01B4	436	옴	01DC	476	즈
0115	277	국	013D	317	딤	0165	357	밀	018D	397	션	01B5	437	완	01DD	477	증
0116	278	권	013E	318	떨	0166	358	바	018E	398	소	01B6	438	외	01DE	478	지
0117	279	귀	013F	319	라	0167	359	반	018F	399	속	01B7	439	윈	01DF	479	직
0118	280	균	0140	320	락	0168	360	밖	0190	400	솔	01B8	440	요	01E0	480	진
0119	281	그	0141	321	람	0169	361	방	0191	401	송	01B9	441	웅	01E1	481	짐
011A	282	극	0142	322	래	016A	362	배	0192	402	수	01BA	442	우	01E2	482	짜
011B	283	근	0143	323	랜	016B	363	백	0193	403	순	01BB	443	옴	01E3	483	쪽
011C	284	금	0144	324	램	016C	364	버	0194	404	쉬	01BC	444	윈	01E4	484	처
011D	285	급	0145	325	러	016D	365	번	0195	405	스	01BD	445	웨	01E5	485	청
011E	286	기	0146	326	레	016E	366	범	0196	406	시	01BE	446	위	01E6	486	체
011F	287	까	0147	327	렉	016F	367	벤	0197	407	식	01BF	447	울	01E7	487	초
0120	288	꺼	0148	328	렌	0170	368	벨	0198	408	신	01C0	448	으	01E8	488	최
0121	289	끝	0149	329	력	0171	369	번	0199	409	실	01C1	449	옴	01E9	489	추
0122	290	나	014A	330	령	0172	370	별	019A	410	십	01C2	450	응	01EA	490	출
0123	291	날	014B	331	로	0173	371	보	019B	411	싱	01C3	451	의	01EB	491	춤
0124	292	내	014C	332	록	0174	372	복	019C	412	씬	01C4	452	이	01EC	492	총
0125	293	녹	014D	333	료	0175	373	본	019D	413	아	01C5	453	인	01ED	493	취
0126	294	누	014E	334	릅	0176	374	봇	019E	414	안	01C6	454	일	01EE	494	촉
0127	295	뉴	014F	335	류	0177	375	부	019F	415	알	01C7	455	임	01EF	495	치



**Keyboard Font Table 6 - Simplified Chinese, Traditional Chinese, Korean; continued**

Hex	Dec	Char	Hex	Dec	Char	Hex	Dec	Char	Hex	Dec	Char	Hex	Dec	Char	Hex	Dec	Char
01F0	496	침	0218	536	필	0240	576	件	0268	616	击	0290	656	口	02B8	696	处
01F1	497	카	0219	537	하	0241	577	份	0269	617	分	0291	657	可	02B9	697	备
01F2	498	케	021A	538	한	0242	578	优	026A	618	切	0292	658	台	02BA	698	复
01F3	499	커	021B	539	할	0243	579	位	026B	619	列	0293	659	右	02BB	699	外
01F4	500	코	021C	540	합	0244	580	低	026C	620	创	0294	660	号	02BC	700	多
01F5	501	큰	021D	541	해	0245	581	体	026D	621	删	0295	661	同	02BD	701	夜
01F6	502	쿨	021E	542	행	0246	582	作	026E	622	别	0296	662	名	02BE	702	失
01F7	503	퀸	021F	543	향	0247	583	使	026F	623	删	0297	663	向	02BF	703	头
01F8	504	큐	0220	544	허	0248	584	保	0270	624	别	0298	664	吗	02C0	704	始
01F9	505	크	0221	545	현	0249	585	修	0271	625	到	0299	665	否	02C1	705	子
01FA	506	키	0222	546	형	024A	586	俯	0272	626	制	029A	666	启	02C2	706	字
01FB	507	킹	0223	547	호	024B	587	個	0273	627	前	029B	667	命	02C3	707	存
01FC	508	타	0224	548	화	024C	588	倒	0274	628	創	029C	668	和	02C4	708	安
01FD	509	탈	0225	549	확	024D	589	值	0275	629	功	029D	669	品	02C5	709	完
01FE	510	태	0226	550	환	024E	590	停	0276	630	加	029E	670	响	02C6	710	定
01FF	511	택	0227	551	활	024F	591	偿	0277	631	动	029F	671	问	02C7	711	实
0200	512	터	0228	552	항	0250	592	備	0278	632	助	02A0	672	啟	02C8	712	室
0201	513	털	0229	553	회	0251	593	儲	0279	633	動	02A1	673	單	02C9	713	容
0202	514	테	022A	554	효	0252	594	傳	027A	634	勿	02A2	674	嗎	02CA	714	實
0203	515	템	022B	555	휴	0253	595	像	027B	635	化	02A3	675	器	02CB	715	对
0204	516	텨	022C	556	“	0254	596	償	027C	636	区	02A4	676	四	02CC	716	寻
0205	517	토	022D	557	”	0255	597	優	027D	637	區	02A5	677	回	02CD	717	导
0206	518	통	022E	558	一	0256	598	儲	027E	638	升	02A6	678	固	02CE	718	尋
0207	519	투	022F	559	上	0257	599	元	027F	639	协	02A7	679	图	02CF	719	對
0208	520	트	0230	560	下	0258	600	先	0280	640	協	02A8	680	圈	02D0	720	導
0209	521	튼	0231	561	不	0259	601	光	0281	641	单	02A9	681	圖	02D1	721	屏
020A	522	티	0232	562	世	025A	602	入	0282	642	博	02AA	682	在	02D2	722	巡
020B	523	틱	0233	563	丟	025B	603	內	0283	643	印	02AB	683	地	02D3	723	工
020C	524	틸	0234	564	丟	025C	604	全	0284	644	厂	02AC	684	场	02D4	724	左
020D	525	팅	0235	565	个	025D	605	关	0285	645	原	02AD	685	址	02D5	725	已
020E	526	팻	0236	566	中	025E	606	兼	0286	646	去	02AE	686	均	02D6	726	带
020F	527	팬	0237	567	串	025F	607	内	0287	647	参	02AF	687	垂	02D7	727	帧
0210	528	팸	0238	568	主	0260	608	冗	0288	648	參	02B0	688	域	02D8	728	帮
0211	529	평	0239	569	之	0261	609	冲	0289	649	又	02B1	689	埠	02D9	729	帶
0212	530	포	023A	570	事	0262	610	况	028A	650	反	02B2	690	執	02DA	730	常
0213	531	표	023B	571	于	0263	611	冻	028B	651	发	02B3	691	基	02DB	731	幀
0214	532	품	023C	572	产	0264	612	准	028C	652	取	02B4	692	堆	02DC	732	幕
0215	533	프	023D	573	亮	0265	613	凍	028D	653	受	02B5	693	報	02DD	733	幫
0216	534	플	023E	574	令	0266	614	減	028E	654	变	02B6	694	場	02DE	734	干
0217	535	피	023F	575	仰	0267	615	出	028F	655	疊	02B7	695	增	02DF	735	平

Keyboard Font Table 6 - Simplified Chinese, Traditional Chinese, Korean; continued

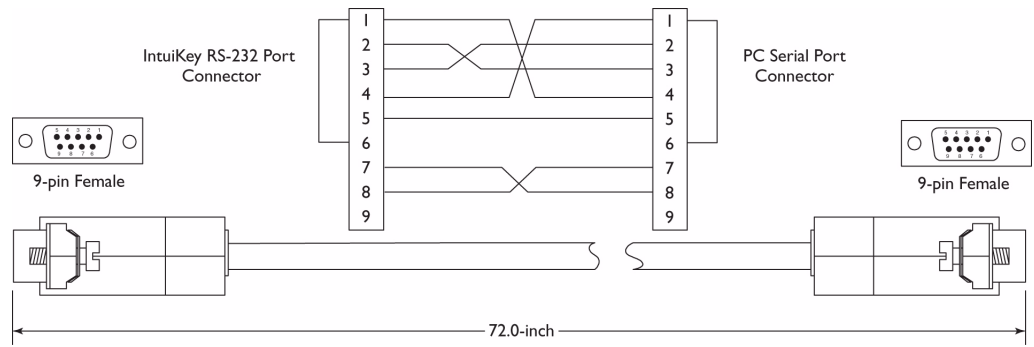
Hex	Dec	Char	Hex	Dec	Char	Hex	Dec	Char	Hex	Dec	Char	Hex	Dec	Char	Hex	Dec	Char
02E0	736	幹	0308	776	据	0330	816	时	0358	856	沒	0380	896	監	03A8	936	纜
02E1	737	序	0309	777	捷	0331	817	显	0359	857	没	0381	897	盘	03A9	937	红
02E2	738	应	030A	778	掃	0332	818	時	035A	858	況	0382	898	監	03AA	938	級
02E3	739	度	030B	779	接	0333	819	晃	035B	859	法	0383	899	盤	03AB	939	线
02E4	740	廠	030C	780	控	0334	820	景	035C	860	波	0384	900	直	03AC	940	组
02E5	741	开	030D	781	掩	0335	821	晶	035D	861	活	0385	901	省	03AD	941	结
02E6	742	式	030E	782	描	0336	822	暫	035E	862	测	0386	902	瞬	03AE	942	统
02E7	743	引	030F	783	提	0337	823	暫	035F	863	消	0387	903	矩	03AF	943	继
02E8	744	当	0310	784	插	0338	824	更	0360	864	清	0388	904	短	03B0	944	续
02E9	745	录	0311	785	換	0339	825	最	0361	865	減	0389	905	码	03B1	945	纜
02EA	746	影	0312	786	握	033A	826	有	0362	866	測	038A	906	硬	03B2	946	編
02EB	747	待	0313	787	搖	033B	827	期	0363	867	準	038B	907	确	03B3	947	缺
02EC	748	快	0314	788	搜	033C	828	未	0364	868	滤	038C	908	確	03B4	948	置
02ED	749	态	0315	789	攝	033D	829	本	0365	869	激	038D	909	碼	03B5	949	聚
02EE	750	性	0316	790	摆	033E	830	机	0366	870	瀟	038E	910	示	03B6	950	能
02EF	751	总	0317	791	搖	033F	831	杂	0367	871	点	038F	911	禁	03B7	951	脚
02F0	752	息	0318	792	撤	0340	832	杈	0368	872	無	0390	912	移	03B8	952	腳
02F1	753	態	0319	793	撥	0341	833	杆	0369	873	焦	0391	913	程	03B9	953	自
02F2	754	應	031A	794	播	0342	834	材	036A	874	版	0392	914	穩	03BA	954	至
02F3	755	成	031B	795	擇	0343	835	束	036B	875	特	0393	915	穩	03BB	955	色
02F4	756	戶	031C	796	擊	0344	836	极	036C	876	状	0394	916	空	03BC	956	菜
02F5	757	户	031D	797	操	0345	837	枢	036D	877	狀	0395	917	突	03BD	957	落
02F6	758	所	031E	798	據	0346	838	柜	036E	878	率	0396	918	端	03BE	958	蓝
02F7	759	手	031F	799	擺	0347	839	校	036F	879	现	0397	919	简	03BF	959	蔽
02F8	760	打	0320	800	攝	0348	840	格	0370	880	現	0398	920	算	03C0	960	藍
02F9	761	执	0321	801	收	0349	841	档	0371	881	球	0399	921	管	03C1	961	處
02FA	762	扫	0322	802	改	034A	842	極	0372	882	理	039A	922	类	03C2	962	號
02FB	763	找	0323	803	放	034B	843	樞	0373	883	生	039B	923	系	03C3	963	行
02FC	764	抖	0324	804	效	034C	844	模	0374	884	產	039C	924	紅	03C4	964	衝
02FD	765	护	0325	805	数	034D	845	機	0375	885	用	039D	925	級	03C5	965	衡
02FE	766	报	0326	806	敲	034E	846	檔	0376	886	电	039E	926	索	03C6	966	补
02FF	767	拍	0327	807	整	034F	847	櫃	0377	887	画	039F	927	組	03C7	967	表
0300	768	拒	0328	808	數	0350	848	權	0378	888	界	03A0	928	結	03C8	968	被
0301	769	拔	0329	809	文	0351	849	止	0379	889	畫	03A1	929	統	03C9	969	装
0302	770	择	032A	810	料	0352	850	正	037A	890	當	03A2	930	線	03CA	970	補
0303	771	持	032B	811	新	0353	851	步	037B	891	疊	03A3	931	編	03CB	971	裝
0304	772	指	032C	812	於	0354	852	武	037C	892	登	03A4	932	總	03CC	972	複
0305	773	按	032D	813	旋	0355	853	比	037D	893	發	03A5	933	繁	03CD	973	見
0306	774	振	032E	814	无	0356	854	求	037E	894	白	03A6	934	繼	03CE	974	規
0307	775	換	032F	815	日	0357	855	池	037F	895	益	03A7	935	續	03CF	975	視

Keyboard Font Table 6 - Simplified Chinese, Traditional Chinese, Korean; continued

Hex	Dec	Char	Hex	Dec	Char	Hex	Dec	Char	Hex	Dec	Char	Hex	Dec	Char	Hex	Dec	Char
03D0	976	覺	03EA	1002	记	0404	1028	辅	041E	1054	選	0438	1080	间	0452	1106	預
03D1	977	见	03EB	1003	设	0405	1029	输	041F	1055	邏	0439	1081	陣	0453	1107	頻
03D2	978	规	03EC	1004	访	0406	1030	达	0420	1056	部	043A	1082	降	0454	1108	顫
03D3	979	视	03ED	1005	试	0407	1031	运	0421	1057	配	043B	1083	限	0455	1109	馬
03D4	980	觉	03EE	1006	语	0408	1032	返	0422	1058	重	043C	1084	陣	0456	1110	驅
03D5	981	解	03EF	1007	误	0409	1033	进	0423	1059	銳	043D	1085	除	0457	1111	馬
03D6	982	言	03F0	1008	请	040A	1034	远	0424	1060	錄	043E	1086	隨	0458	1112	驱
03D7	983	計	03F1	1009	调	040B	1035	连	0425	1061	錯	043F	1087	隨	0459	1113	體
03D8	984	訊	03F2	1010	象	040C	1036	迭	0426	1062	鍵	0440	1088	集	045A	1114	高
03D9	985	記	03F3	1011	負	040D	1037	退	0427	1063	鎖	0441	1089	雜	045B	1115	黃
03DA	986	訪	03F4	1012	資	040E	1038	适	0428	1064	鏡	0442	1090	電	045C	1116	黃
03DB	987	設	03F5	1013	負	040F	1039	逆	0429	1065	鎖	0443	1091	面	045D	1117	默
03DC	988	許	03F6	1014	资	0410	1040	选	042A	1066	銳	0444	1092	音	045E	1118	點
03DD	989	試	03F7	1015	走	0411	1041	递	042B	1067	錯	0445	1093	響	045F	1119	닐
03DE	990	認	03F8	1016	路	0412	1042	通	042C	1068	鍵	0446	1094	項	0460	1120	終
03DF	991	語	03F9	1017	身	0413	1043	速	042D	1069	鏡	0447	1095	順	0461	1121	終
03E0	992	誤	03FA	1018	軟	0414	1044	連	042E	1070	長	0448	1096	須	0462	1122	介
03E1	993	調	03FB	1019	軸	0415	1045	進	042F	1071	长	0449	1097	預	0463	1123	溫
03E2	994	請	03FC	1020	載	0416	1046	邏	0430	1072	門	044A	1098	頭	0464	1124	相
03E3	995	警	03FD	1021	輔	0417	1047	運	0431	1073	閉	044B	1099	頻	0465	1125	溫
03E4	996	護	03FE	1022	輸	0418	1048	達	0432	1074	開	044C	1100	類	0466	1126	相
03E5	997	變	03FF	1023	轉	0419	1049	遙	0433	1075	間	044D	1101	顫	0467	1127	般
03E6	998	計	0400	1024	转	041A	1050	遞	0434	1076	關	044E	1102	顯			
03E7	999	认	0401	1025	软	041B	1051	遠	0435	1077	門	044F	1103	項			
03E8	1000	议	0402	1026	轴	041C	1052	遥	0436	1078	閉	0450	1104	順			
03E9	1001	讯	0403	1027	載	041D	1053	適	0437	1079	問	0451	1105	須			



## B RS-232 Interface Cable Detail



## C Allegiant Command Scripts and the ISA

Allegiant Command Scripts are entered using the Command Script table in the PC-based Allegiant Server software package. There are three (3) distinct types of Allegiant macros which can be programmed using the ISA software, downloaded into the keyboard, then activated via the IntuiKey keyboard's softkey buttons.

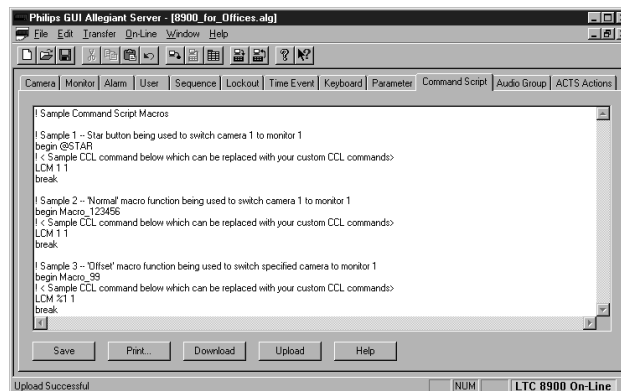
**Type 1:** The Star function is the simplest macro. Only one of these types of macros can be configured in the Allegiant system. Any of the softkey Command Scripts can be used to activate the Star macro function, by specifying the value 0 (zero) in the associated Command Script edit box (the default Star softkey menu can be found in the 80-Main Scripts tree form). To define the function associated with the Star button activation, refer to the first example in the Command Script table.

**Type 2:** There can be 999999 different standard macros. In this case, a softkey macro in the keyboard is assigned a unique 6-digit number. The number corresponds to the macro number programmed into the Allegiant table. For example, see the following figure which uses a standard macro that has been assigned the value 123456.

**Type 3:** The offset macro is the most powerful macro. There can only be 99 different offset macros, but each can include an additional 4 digit number which is passed into the Allegiant Command Script. This allows configurations which utilize the same general function, but includes the camera or monitor number currently being controlled by the keyboard, or other values entered by the user via the numeric keypad. For example, see the following figure which uses an offset macro that has been assigned the value 99.

An example of each of the three is shown in the sample Command Script table.

Refer to the Allegiant PC Software Manual and the Allegiant Command Console Language (CCL) Manual for more information on programming and using CCL commands.





**Bosch Security Systems, Inc.**

850 Greenfield Road  
Lancaster, PA

U.S.A

Phone + 1 800 289 0096

Fax +1 585 223 9180

**[www.boschsecurity.com](http://www.boschsecurity.com)**

© Bosch Security Systems, Inc., 2009