

PRA-WCP-US Wall control panel, US-style

PRAESENSA



The wall control panel PRA-WCP-US provides convenient local control of background music (BGM) in a zone covered by a PRAESENSA sound system. In the PRAESENSA system it is possible to configure a set of selectable music sources, the volume control range, and the operating zone for each wall control panel. Control is quick and intuitive, with a single knob for the rotate and push select actions. The color LCD provides clear user feedback. It is possible to manage user access with a PIN to restrict operation to authorized staff.

The PRA-WCP-US comes with a white front and a knob. A black front and knob are included for easy exchange on-site. It fits in a standard rectangular US single-gang wall-mount box for flush-mount installation. The panel must be covered with a standard Decora wall plate.

Functions

IP-network connection

- Direct connection to the IP-network. One shielded Ethernet cable is sufficient for Power over Ethernet and data exchange.
- The wall control panel communicates the BGM settings directly to the system controller. The system controller adjusts the source and level of the involved amplifier channels accordingly.
- Because only control information is exchanged, no audio data, the occupied network bandwidth for this function is minimized.

Operation

- The volume settings of the BGM have configurable minimum and maximum levels.

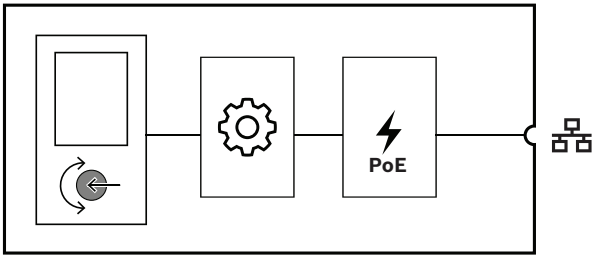
- ▶ Easy to read color TFT display
- ▶ Local control of music source and volume in different zones
- ▶ PoE powered device
- ▶ Fits in the standard US single-gang NEMA-compliant wall-mount box
- ▶ Interchangeable white and black front

- Selection of the BGM source from a list of BGM channels that are assigned to the zone under control.
- Selection through a single rotary knob with push action.
- Clear user feedback through the backlit color LCD.
- Optional access control through PIN entry to restrict operation to authorized staff.

Installation

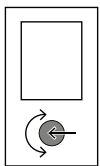
- The wall control panel fits in a standard rectangular US single-gang wall-mount box with a depth of 50 mm or 2 inches.
- To match already installed switches and sockets, the wall control front panel can be covered with a standard Decora wall plate with a cutout of 1.375 in x 2.75 in (not included).
- IP-network connection through a single cable with RJ45 connector.
- The device comes with accessories for white and black appearance, exchangeable to match the environment.

Connection and functional diagram





| | | | |
|---|------------|---|---------------------|
|  | Controller |  | Power over Ethernet |
|---|------------|---|---------------------|

Front side indicator




Status screen LCD


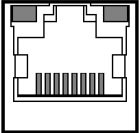
Front side control

| | | |
|---|---------------------------------|---------------------------|
|  | Function select and control | Rotary/push encoder |
|  | Device reset to factory default | Button (behind the cover) |

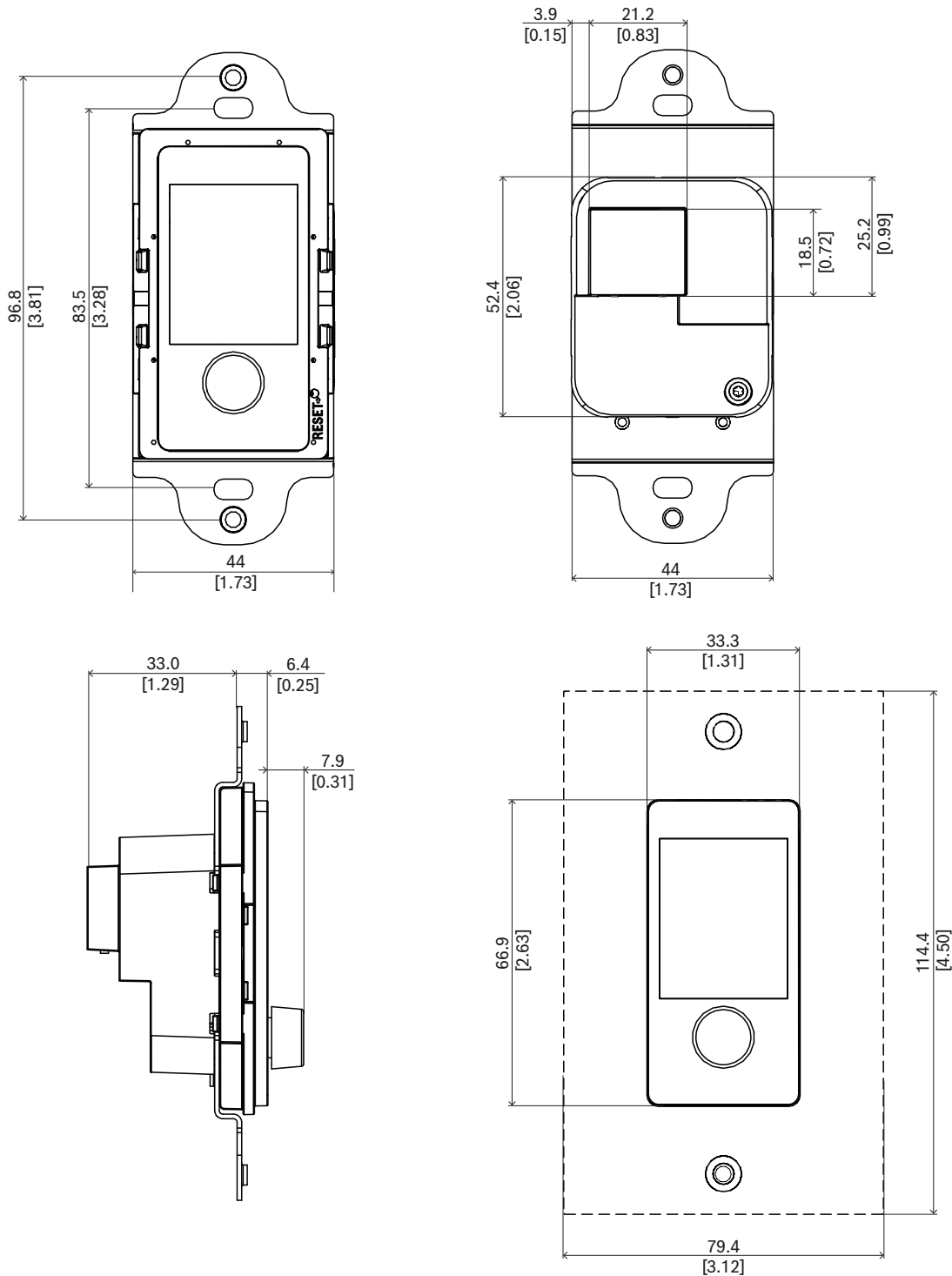
Rear side indicators

| | | |
|---|--|-----------------|
|  | 100 Mbps network 1-2 1 Gbps network 1-2 | Yellow Green |
|---|--|-----------------|

Rear side interconnection

| | | |
|---|-----------------------|---|
|  | Network port (PoE PD) |  |
|---|-----------------------|---|

Dimensions



mm [in]

Architects’ and engineers’ specifications

The IP networked wall control panel shall be designed exclusively for use with Bosch PRAESENSA systems. It shall provide an interface for control data over OMNEO using Ethernet. It shall receive Power over Ethernet (PoE) through its network connection. It shall fit in a standard electrical back box for flush-mount installations. The wall control panel shall be an interface to the sound system to select a background music channel in a zone and change its volume level. It shall have a single push/rotate knob

and a full color LCD with backlight for easy navigation and clear indication of the operating zone, selected channel and actual volume level. It shall be fit for operation by untrained people, but it shall also have configurable PIN-code access to restrict access to authorized staff. The wall control panel shall be marked for CE and be compliant with the RoHS directive. Warranty shall be three years minimum. The wall control panel shall be a Bosch PRA-WCP-EU or PRA-WCP-US.

Regulatory information

| Regulatory areas | |
|------------------|---|
| Immunity | EN 55035 |
| Emissions | EN 55032 EN 61000-6-3 ICES-003 ANSI C63.4 FCC-47 part 15B class A |
| Environment | EN/IEC 63000 |

Parts included

| Quantity | Component |
|----------|--|
| 1 | PRA-WCP-US Wall control panel, US-style, white version |
| 1 | Black front panel and knob |
| 1 | Quick installation guide |
| 1 | Safety and security information |

Technical specifications

Electrical

| Display | |
|-------------------------------------|--------------|
| Display size (in) | 1.77 in |
| Display color | Color |
| Display type | TFT |
| Display resolution (pixels) (W x H) | 128 x 160 px |
| Brightness | 480 cd/m2 |

Power transfer

| | |
|---------------------------------|--------------------------|
| Power over Ethernet (PD) | PoE IEEE 802.3af Class 1 |
| Nominal voltage (VDC) | 48 VDC |
| Input voltage (VDC) (tolerance) | 37 VDC – 57 VDC |
| Power consumption (W) (maximum) | 1.30 W |

Network interface

| | |
|-----------------------|------------------------|
| Ethernet type | 100BASE-TX; 1000BASE-T |
| Protocols / standards | TCP/IP; AES70 |

| | |
|--------------------------|---|
| Number of Ethernet ports | 1 |
|--------------------------|---|

Reliability

| | |
|--|-------------|
| Mean time between failures (MTBF) (h) (calculated according to Telcordia SR 332 Issue 3) | 2,433,404 h |
|--|-------------|

Environmental

| | |
|---|-----------------------|
| Operating temperature (°C) | -5 °C – 50 °C |
| Operating temperature (°F) | -13 °F – 131 °F |
| Storage temperature (°C) | -30 °C – 70 °C |
| Storage temperature (°F) | -22 °F – 158 °F |
| Operating relative humidity, non-condensing (%) | 5% – 95% |
| Air pressure (hPa) | 560 hPa – 1,070 hPa |
| Installation altitude (m) | -500 m – 5,000 m |
| Installation altitude (ft) | -1,640 ft – 16,404 ft |

Operating vibration

| | |
|----------------------|-------------------------|
| Amplitude (mm) | < 0.7 mm |
| Acceleration (G) | < 2 G |
| Bump (transport) (G) | < 10 G (IEC 60068-2-27) |

Mechanical

| | |
|-------------------------------------|---|
| Dimensions (H x W x D) (mm) | 107.8 mm x 44 mm x 47.3 mm |
| Dimensions (H x W x D) (in) | 4.24 in x 1.73 in x 1.86 in |
| Dimensions of wall box | US single-gang with depth of 50 mm / 2 in |
| IP rating | IP20 |
| Material | Plastic (PC/ABS – UL94-5VA) |
| Color (RAL) (front cover with knob) | RAL 9017 Traffic black; RAL 9003 Signal white |
| Weight (kg) | 0.10 kg |
| Weight (lb) | 0.22 lb |

Ordering information

PRA-WCP-US Wall control panel, US-style

Network connected, PoE powered wall control panel
for local control of background music.

Order number **PRA-WCP-US | F.01U.394.536**

Represented by:

Europe, Middle East, Africa:

Bosch Security Systems B.V.
P.O. Box 80002
5600 JB Eindhoven, The Netherlands
www.boschsecurity.com/xc/en/contact/
www.boschsecurity.com

Germany:

Bosch Sicherheitssysteme GmbH
Robert-Bosch-Platz 1
D-70839 Gerlingen
www.boschsecurity.com

North America:

Bosch Security Systems, LLC
130 Perinton Parkway
Fairport, New York, 14450, USA
www.boschsecurity.com

Asia-Pacific:

Robert Bosch (SEA) Pte Ltd, Security Systems
11 Bishan Street 21
Singapore 573943
www.boschsecurity.com/xc/en/contact/
www.boschsecurity.com