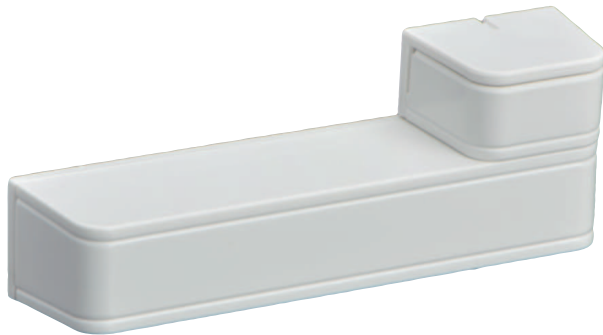


# RADION contact SM



- ▶ Internal magnetic reed switch contact
- ▶ Supervised for low-battery, cover-tamper, and removal from mounting surface
- ▶ Operational up to 5 years using a single, user replaceable Lithium AAA battery

RADION wireless from Bosch provides the range, scalability and exceptional battery life required to ensure reliable performance and superior quality. Advanced diagnostics and multiple device enrollment options make installation and maintenance simple and cost effective. With a complete line of peripherals, RADION provides the flexibility for virtually any application requirement.

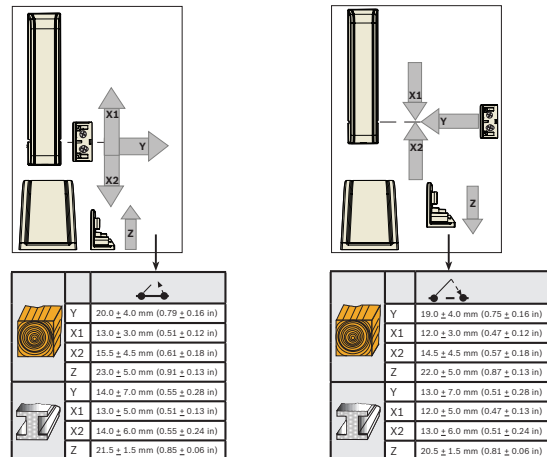
## System overview

RADION contact SM provides a magnetic reed switch contact for monitoring doors and windows. The internal reed contact is activated by an external magnet assembly which can be placed on either side of the detector. It also has a built-in wall and cover tamper switch that transmits a tamper signal when someone removes the device from its base or pulls away from the wall.

## Functions

### Reed Contacts

There is a reed contact on either side of the device, so the magnet assembly can be mounted within 20 mm (0.78 in) of the device on either side. When the distance between the magnet and the internal reed switch of the contact exceeds 20 mm (0.78 in), an alarm signal is sent to the receiver, and from there, to the compatible control panel.



## Regulatory information

Region	Regulatory compliance/quality marks	
Brazil	ANATEL	2798-13-1855
Europe	CE	EMC, LVD, R&TTE, RoHS [RFDW-SM]
France	AFNOR	2120200022A0 RFDW-SM
China	CCC	2021031901000025 [RFDW-SM-CHI]
	CCC	2013031901000110 RFDW-SM-CHI
USA	CSFM	California State Fire Marshal (see our website)
Europe	EN50131	EN-ST-000160 [RFDW-SM]

Region	Regulatory compliance/quality marks	
USA	FCC	Part 15 Security/Remote Control Transmitter 433.42 MHz
Russia	GOST	TC N RU Д-НЛ.МН09.В.00334 EAC
Canada	IC	1249A-RWSSFT
Belgium	INCERT	B-509-0072 [RADION RFDW-RM, RFDW-SM]
USA	UL	20121218-BP8028
	UL	UL 634 - Safety of Connectors and Switches for Use with Burglar-Alarm Systems
Germany	VdS	H116003 [AMAX 2100/3000, RFRC-OPT, RFUN, RFDW-RM, RFDW-SM, RFPR-12, RFDL-11, RFKF-TB, RFKB-FB]

### Installation/configuration notes

#### Mounting Considerations

Mount the detector on an interior door or window frame, and the magnet assembly on the interior of the moving portion of the door or window. Make sure the detector is protected from weather elements such as extreme temperatures, humidity, rain or snow.

#### Notice

Installation on metal surfaces can affect the RF propagation pattern of the radio transceiver.

Installing the plastic magnet cover flush against the door or window will prevent possible damage to the plastic magnet cover.

### Technical specifications

#### Properties

Dimensions:	19.5 mm x 82.55 mm x 12.8 mm
Transmitter	(0.76 in x 3.25 in x 0.50 in)
Dimensions:	18.5 mm x 24.5 mm x 12.5 mm
Magnet	(0.72 in x 0.97 in x 0.49 in)
Weight:	0,073 kg (0.160 lb)

#### Power

Power/Voltage:	1.5 VDC
----------------	---------

#### Represented by:

**Europe, Middle East, Africa:**  
Bosch Security Systems B.V.  
P.O. Box 80002  
5600 JB Eindhoven, The Netherlands  
Phone: + 31 40 2577 284  
www.boschsecurity.com/xc/en/contact/  
www.boschsecurity.com

**Germany:**  
Bosch Sicherheitssysteme GmbH  
Robert-Bosch-Ring 5  
85630 Grasbrunn  
Tel.: +49 (0)89 6290 0  
Fax: +49 (0)89 6290 1020  
de.securitysystems@bosch.com  
www.boschsecurity.com

**North America:**  
Bosch Security Systems, LLC  
130 Perinton Parkway  
Fairport, New York, 14450, USA  
Phone: +1 800 289 0096  
Fax: +1 585 223 9180  
onlinehelp@us.bosch.com  
www.boschsecurity.com

**Asia-Pacific:**  
Robert Bosch (SEA) Pte Ltd, Security Systems  
11 Bishan Street 21  
Singapore 573943  
Phone: +65 6571 2808  
Fax: +65 6571 2699  
www.boschsecurity.com/xc/en/contact/  
www.boschsecurity.com

Battery type:	AAA Lithium
<sup>1</sup> Battery life:	Up to 5 years Upon power-up, test mode lasts approximately 10 sec.

### Environmental Considerations

Temperature:	Functional range: -10° C to +55° (+14° F to +131° F) UL only: 0° C to +49° C (+32° F to +120° F) EN 50130-5 Class II only: -10° C to 55° C (+14° F to +131° F) IP30/IK04
Environment	Complies with EN50130-5 Class II
Relative Humidity:	Up to 93% non-condensing
Cover and Wall Tamper Switch:	Transmits a tamper switch signal when the detector is removed from its base, or the unit is pulled away from the ceiling.
Frequency:	433.42 MHz
Use:	Intended for indoor use.

<sup>1</sup>After test mode, this detector is operational.

### Ordering information

#### RFDW-SM Wireless surface mount contact

Wireless magnetic reed door and window contact.

Order number **RFDW-SM | F.01U.253.611**

**F.01U.383.290**

#### RFDW-SM-CHI Wireless surface mount contact

For use in China only.

Order number **RFDW-SM-CHI | F.01U.253.628**

**F.01U.383.359**

### Accessories

#### RFAC-DW-10 Spacer for RADION contact, 10pcs

Package of 10 base spacers and 10 magnet spacers for RADION Door/Window surface mount contacts.

Order number **RFAC-DW-10 | F.01U.310.604**

### Services

#### EWE-DETCTR-IW 12 mths wrty ext detector general

12 months warranty extension

Order number **EWE-DETCTR-IW**