

# Application Note

## Remote Programming Software RPS/RPS-LITE Crystal Reports Service Pack

### 1. Overview

Crystal Reports for Microsoft Visual Studio is installed with RPS/RPS-LITE v6.12 and v6.14. This service pack will update the installation to Crystal Reports Runtime Engine version 13.0.20.

### Applicability

The service pack applies to installations running:

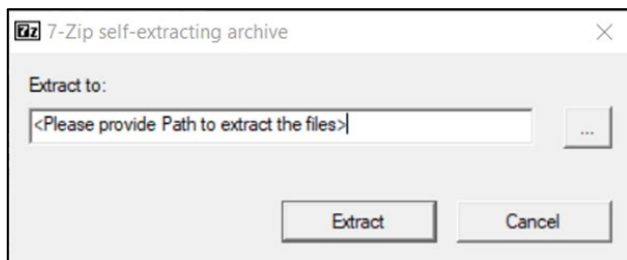
- RPS versions: 6.12.000, 6.14.001, 6.14.001 SP1
- RPS-LITE version: 6.12.000, 6.14.001, 6.14.001 SP1
- Crystal Reports Runtime Engine version: 13.0.5

### 2. Service Pack Installation

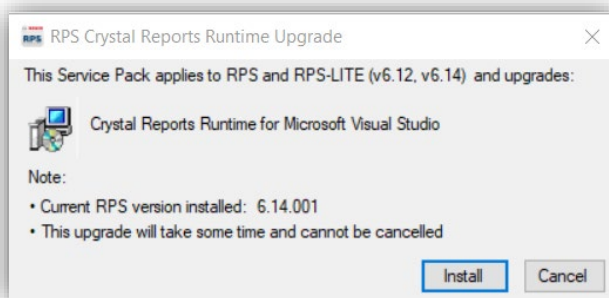
The service pack installation will update an existing RPS or RPS-LITE application. Apply the service pack to a computer running RPS or RPS-LITE version v6.12 or v6.14 only.

To install the service pack:

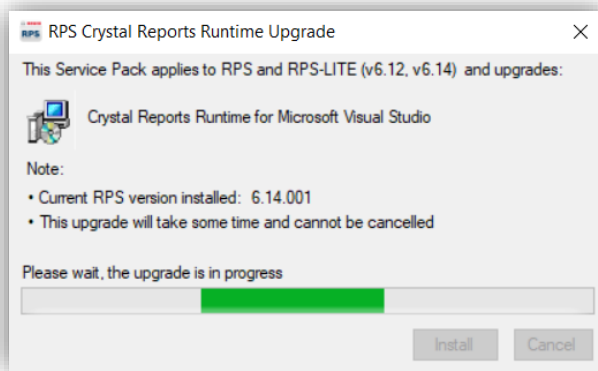
1. Close the RPS or RPS-LITE application on the computer where you are installing.
2. Double-click the service pack 7-Zip archive package named **RPSCrystalReportUpgradeSP.exe**.
3. Provide the path for the extract folder where you want to copy the extracted files.
4. Click **Extract**.



5. Locate the **RPSCrystalReportSP.exe** executable file in the extract folder.
6. Right-click and select **Run as Admin** on **RPSCrystalReportSP.exe** to run the installer.



7. When the installer screen opens, click **Install**.



8. When the installation has finished successfully, click **OK** to exit the installer.

**Notes:**

- RPS Crystal Reports Service Pack contains 16 new binaries (RAMVMain/Bin).
- RPS Service Pack install activities are added to the <RPS Installed path>\Log\RPSInstallation.log.
- SAP Crystal Reports log file is created in the <RPS Installed path>\Logs\CRUpgrade.log.



**Bosch Security Systems B.V.**

Torenallee 49

5617 BA Eindhoven

Netherlands

**[www.boschsecurity.com](http://www.boschsecurity.com)**

© Bosch Security Systems B.V., 2023