

Technical Bulletin

RPS v6.14.200 remote connection to Easy Series panels

Issue severity

- High. Act immediately
- Medium. Bosch Security Systems strongly recommends you take the action described below.
- Low. Advisory

Products affected

- ▶ Remote Programming Software (RPS) v6.14.200
- ▶ Easy Series control panels with firmware v3.x

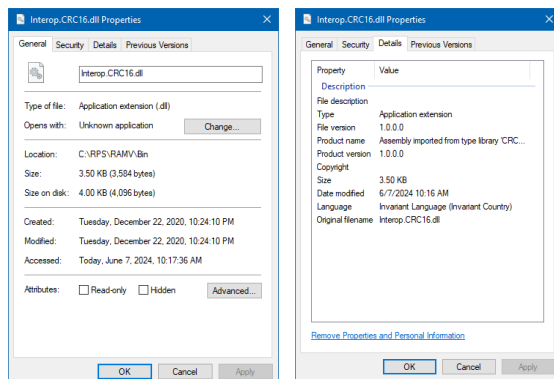
June, 2024

Issue

Some customers might encounter remote connection failures with RPS v6.14.200 and Easy Series v3.x panels.

Applicability

- Easy Series control panels operating with version 3.x firmware
- RPS v6.14.200
 - Interop.CRC16.dll



Resolution

Download and apply the RPS v6.14.200 Easy Series Service Pack 1 to your RPS v6.14.200 installation.

Instructions

1. Visit us.boschsecurity.com to download the *RPS v6.14.200 Easy Series Service Pack 1.zip* service pack.
2. Extract the files to your preferred location on the same machine that has RPS v6.14.200 installed.
 - You will use the new *Interop.CRC16.dll* file to replace the existing file that is installed.
3. Browse to the existing RPS installation folder on your machine that has RPSv6.14.200 installed.
 - [install path] > RPS > RAMV > Bin
4. Rename the current *Interop.CRC16.dll* file to create a backup file.
 - For example, *Interop.CRC16-ORIG200.dll*
5. Paste the new *Interop.CRC16.dll* file from the service pack into this same folder.
6. Restart RPS.

For technical issues, contact the Bosch Technical Support Team at 800-289-0096.

Bosch Security Systems B.V.
Torenallee 49
5617 BA Eindhoven
Netherlands
www.boschsecurity.com
© Bosch Security Systems B.V., 2024