

# Technical Bulletin

## RPS help for Point Index parameters Point Type, Point Response, and Circuit Style is incomplete.



### Issue severity

- High. Act immediately
- Medium. Bosch Security Systems strongly recommends you take the action described below.
- Low. Advisory

### Products affected

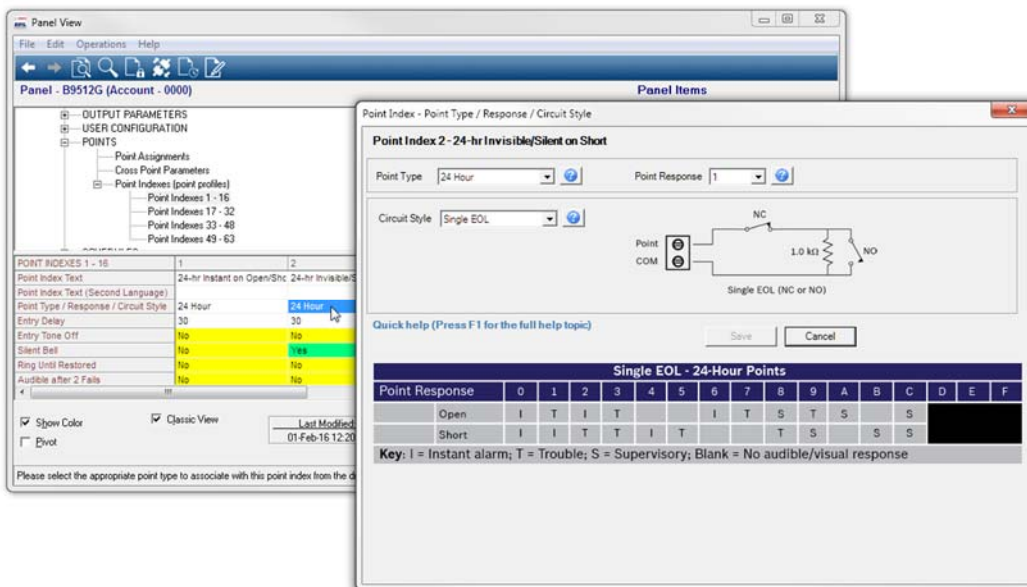
- ▶ RPS v6.00 (and earlier), v6.01
- ▶ B9512G, B8512G control panels
- ▶ B5512, B4512, B3512 control panels
- ▶ GV4 control panels
- ▶ GV3 control panels
- ▶ GV2 control panels
- ▶ D9112, D9112G control panels

February 2 2016

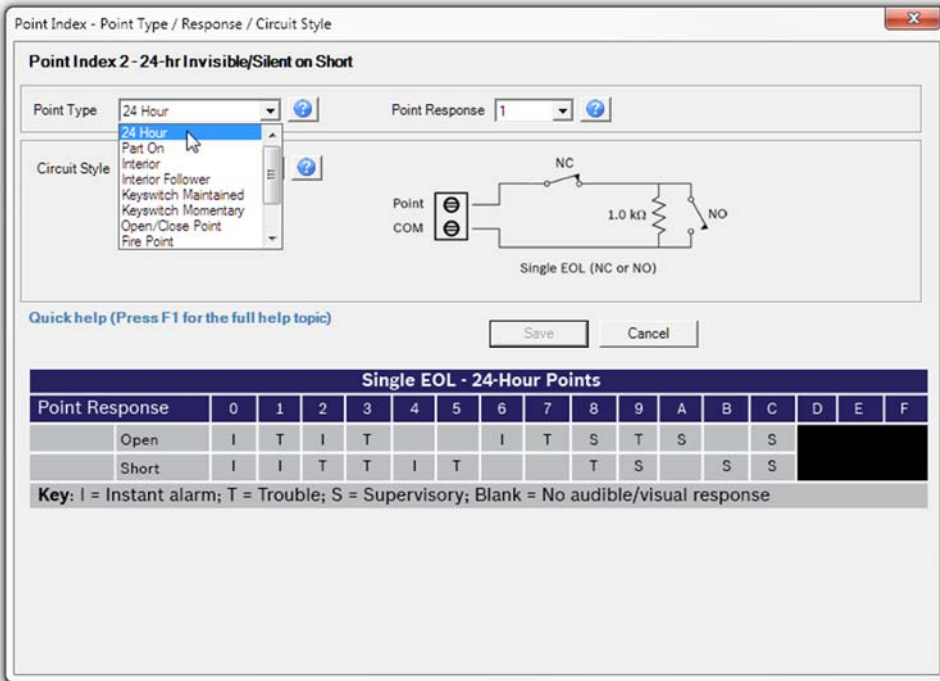
#### Issue 1: RPS v6.01 help for Point Index parameters Point Type, Point Response, and Point Circuit is incomplete for B9512G, B8512G, B5512, B4512, and B3512 control panels (firmware v3.xx)

The information that follows is missing from RPS help for B9512G, B8512G, B5512, B4512, B3512 control panels (firmware v3.xx):

RPS v6.01 bundles the Point Index parameters Point Type, Point Response, and point Circuit Style in one window. The figure below shows the default Point Index – Point Type / Response / Circuit Style window for Point Index 2. Notice that the Save button is not available (grayed out). You can close the window by clicking Cancel (or the red close button in the upper right corner of the window). The Point Type, Point Response, and Circuit Style parameters do not change.



If you open the Point Index – Point Type / Response / Circuit Style window for Point Index 2, and click on the Point Type field the point type selection drop-down list opens.



Clicking on the 24 Hour section changes the Point Response from 1 to 0. 0 is the default Point Response for the 24 Hour Point Type. Notice the Save button is active in the figure below.

Whenever you select (click on) a Point Type, even if it is the same as the current Point Type, RPS automatically changes the Point Response to the default for the Point Type. Table 1 shows the default Point Response for each Point Type.

If you do not want to change the Point Response to the default, click Cancel (or the red close button in the upper right corner of the window).

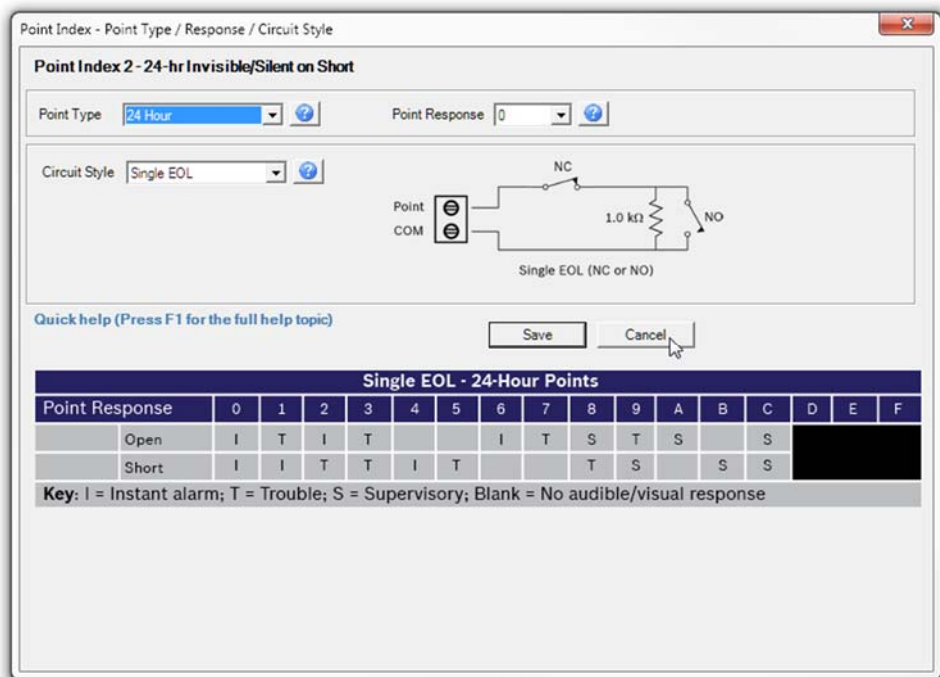


Table 1 shows the default Point Response for each Point Type.

<b>Point Type Selection</b>	<b>Point Response Default</b>
<b>24-Hour</b>	0
<b>Part-On</b>	2
<b>Interior</b>	2
<b>Interior Follower</b>	8
<b>Keyswitch Maintained</b>	1
<b>Keyswitch Momentary</b>	1
<b>Open/Close Point</b>	1
<b>Fire Point</b>	1
<b>Aux AC Supervision</b>	0
<b>Gas Point</b>	1
<b>Custom Function</b>	7

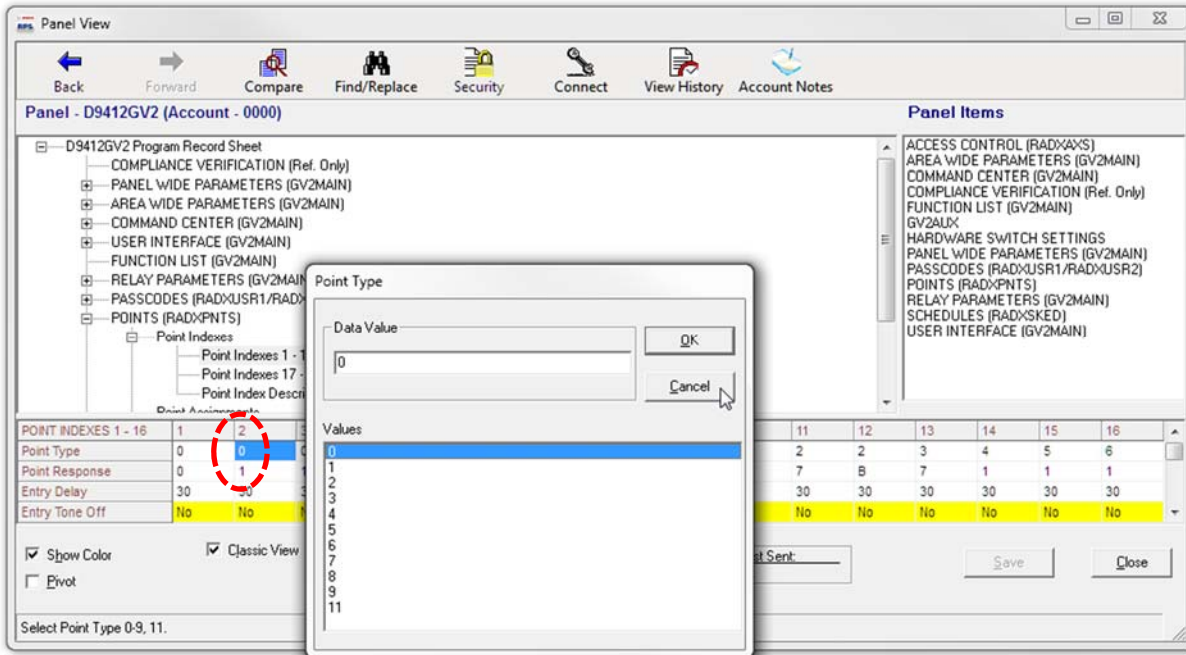
Table 1 Point Response default for Point Type

**Issue 2: RPS (v6.01 and earlier) help for Point Index parameters Point Type and Point Response is incomplete for B5512, B4512, and B3512 control panels (firmware v2.xx), D9112B1, D9112, D9412, D9412G, GV2, GV3, and GV4 control panels**

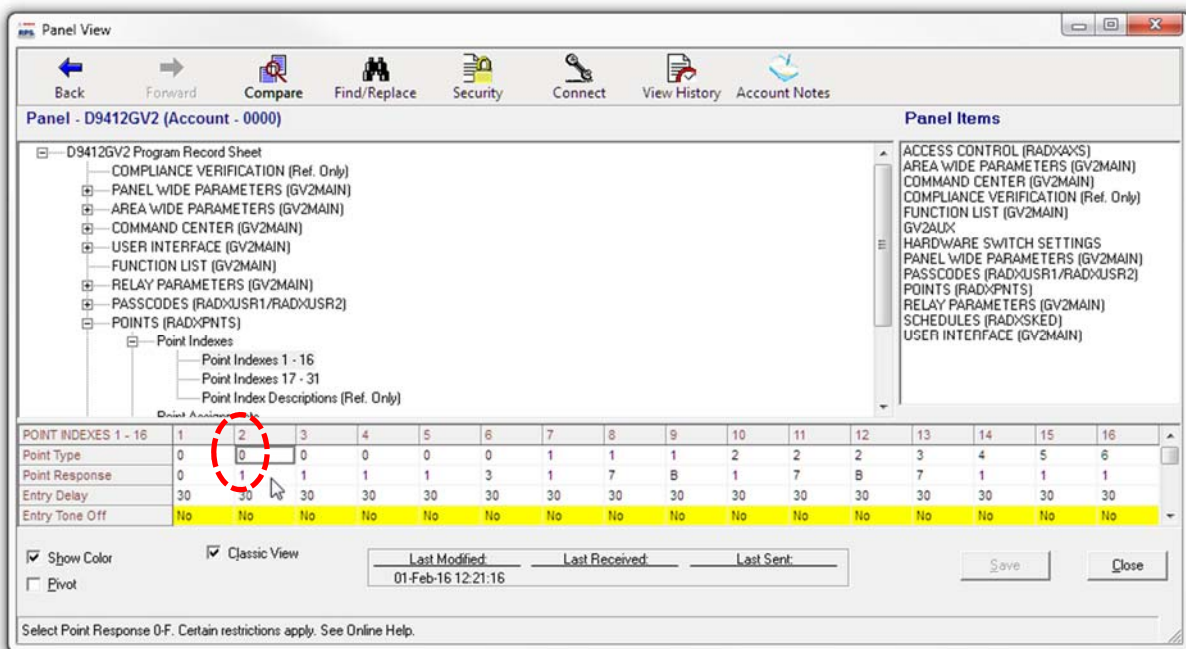
The information that follows is missing from RPS help for B5512, B4512, and B3512 control panels (firmware v2.xx), and D9112, D9112G, GV2, GV3, and GV4 control panels:

When you open the Point Type selection window to view or change the Point Type, RPS automatically changes the Point response parameter to the default for the Point Type you select. RPS changes the Point Response even if you select the current Point Type. Table 2 shows the default Point Response for each Point Type.

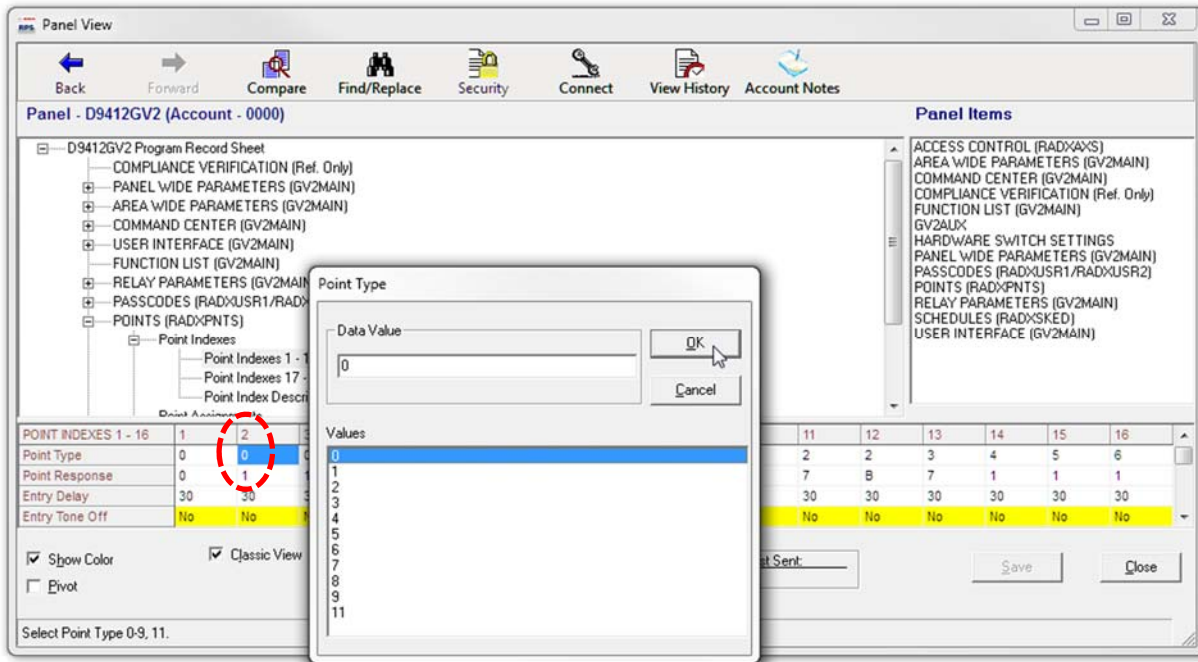
The figure below shows the default Point Type selection window for Point Index 2. Notice that the Point Type is 0 and the Point Response is 1 (the default Point Response for Point Type 0 is 0). To avoid unintentionally changing the Point Response to 0, click Cancel to close the Point Type window.



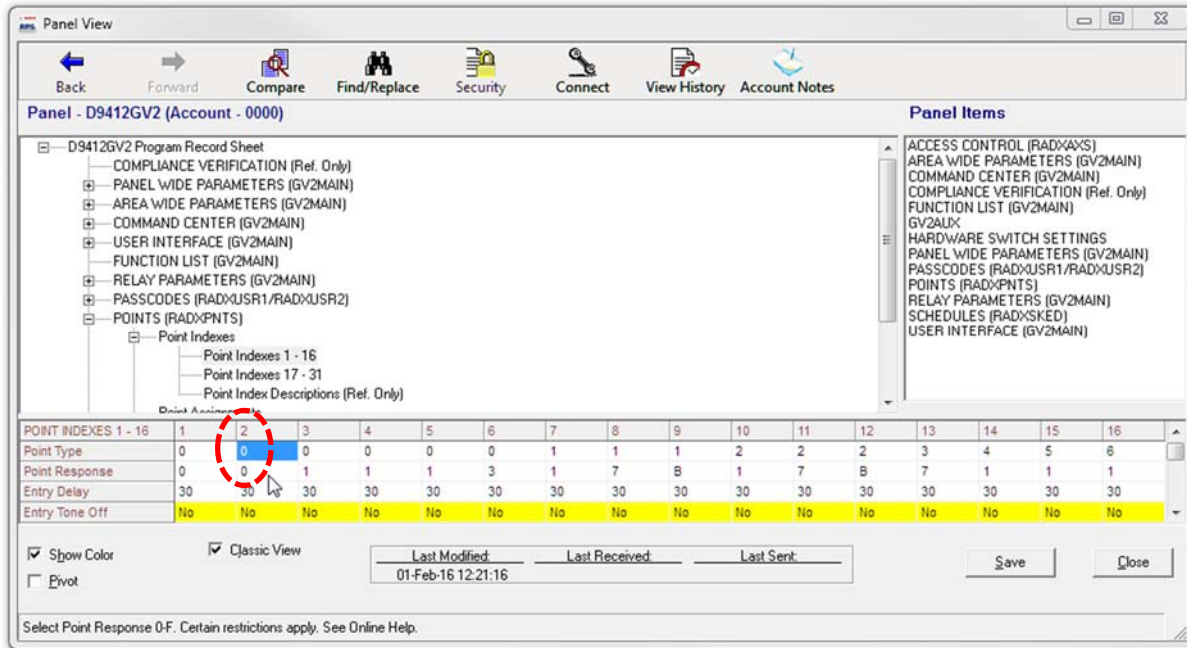
Neither the Point Response, nor the Point Type changes.



Click Ok in the Point Type selection window to automatically change the Point Response to the default for the Point Type you select.



In the example shown in the figure below, RPS changed the Point Response from 1 to 0.





If you clicked OK in the Point Type selection window by mistake, close the account (Panel View window) by clicking Close (or the red close button in the upper right corner of the window). Do not click Save. Click No in the Data Changed pop-up window.

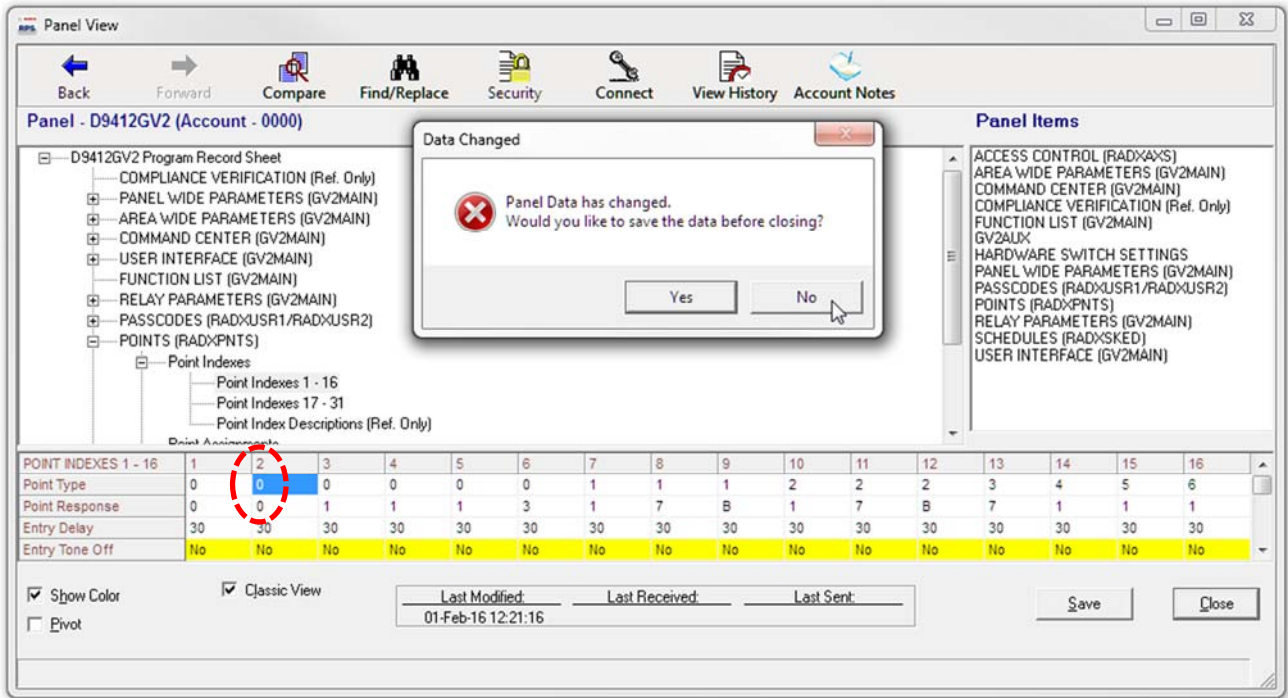


Table 2 shows the default Point Response for each Point Type.

Point Type		Point Response Default		
Selection	Description	D9112B1	D9112, D9412,D9412G	GV2, GV3, D9412GV4 v1.00-1.9
0	24-Hour	0	0	0
1	Perimeter	2	2	2
2	Interior	2	2	2
3	Interior Follower	2	2	2
4	Keyswitch Maintained	0	1	1
5	Keyswitch Momentary	0	1	1
6	Open/Close Point	0	1	1
7	D279 (O/C Non-Priority)	0	1	1
8	D279 (O/C Priority)	—	2	2
9	Easikey	—	1	1
11	Aux AC Supervision	—	—	0

Point Type	Point Response Default
Selection	D9412GV4 v2.00+
24-Hour	0
Part-On	2
Interior	2
Interior Follower	8
Keyswitch Maintained	1
Keyswitch Momentary	1
Open/Close Point	1
Fire Point	1
Aux AC Supervision	0
Gas Point	1
Custom Function	7

Table 2: Point Response default for Point Type

### Resolution for Issues 1 and 2

Complete descriptions of the Point Index parameters Point Type, Point Response, and Circuit Style will be added to RPS help in future versions of RPS.

**Bosch Security Systems, Inc.**  
130 Perinton Parkway  
Fairport, NY 14450 USA  
[www.boschsecurity.com](http://www.boschsecurity.com)