

June 26, 2024

Robert Bosch LLC  
12000 Portland Ave. S.  
Burnsville MN 55337 USA  
Tel 877-863-4166  
Fax 952-884-0043  
www.bosch.us

## Plena Matrix Update Instructions

Please follow this quick guide to update your Plena Matrix PC Control Software, as well as the firmware version on your PLM-8M8 and/or PLM-4Px2x.

### Requirements:

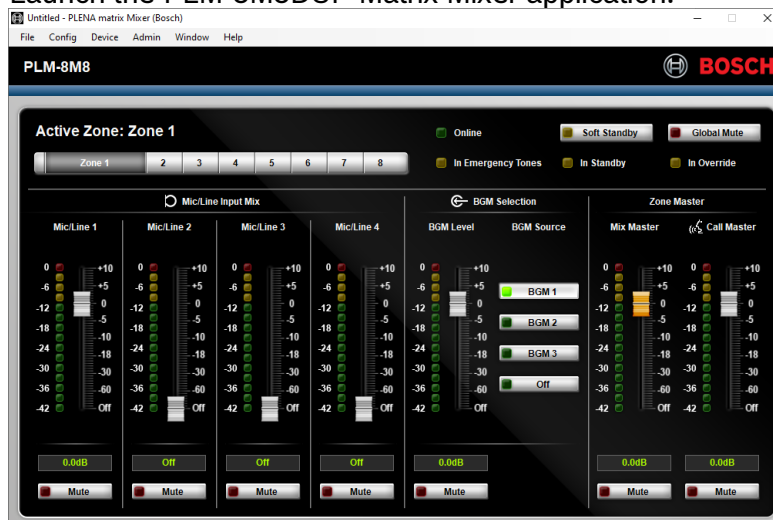
- Windows PC with an Ethernet Interface
- CAT5/6/7 Patch Cable

### Plena Matrix PC Control Software Update (v1.2.28.0)

1. Download the latest version of our software from our website
2. Open the *PlenaMatrix\_1* folder.
3. Install software by executing *Setup.exe*.

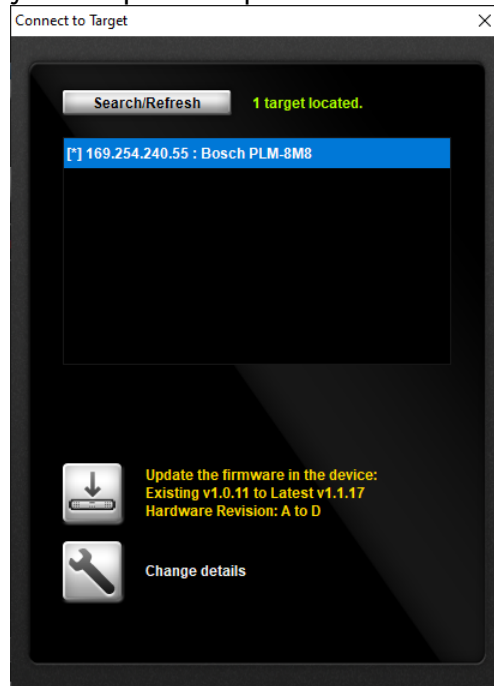
### Firmware Update for PLM-8M8 (v.1.1.17)

1. You must have the latest version of the PC Control Software installed (v1.2.28.0). If you don't, please refer to the section above.
2. Confirm that the PC Ethernet interface is set to "Obtain an IP address automatically".
3. Connect the PC to the PLM-8M8 using the patch cable.
4. Launch the PLM-8M8DSP Matrix Mixer application.

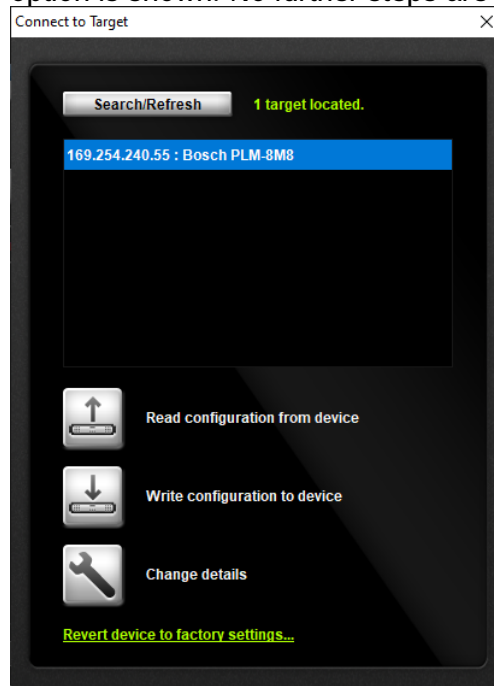


5. Go to the *Device* menu and click *Connect*.
  - a. If the firmware is outdated, the software will automatically show you an option to update it.

November 13, 2023  
Page 2 of 6



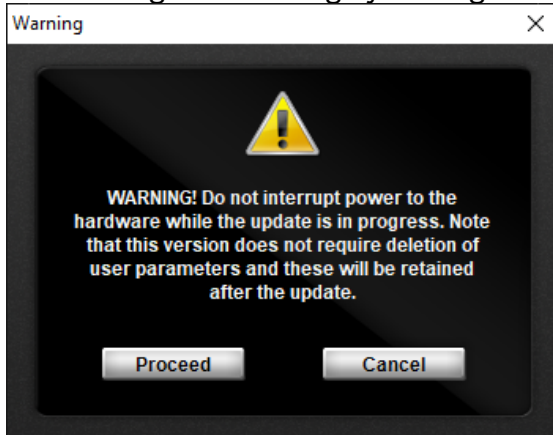
- a. If the firmware is up to date, no update is needed and no update option is shown. No further steps are required.



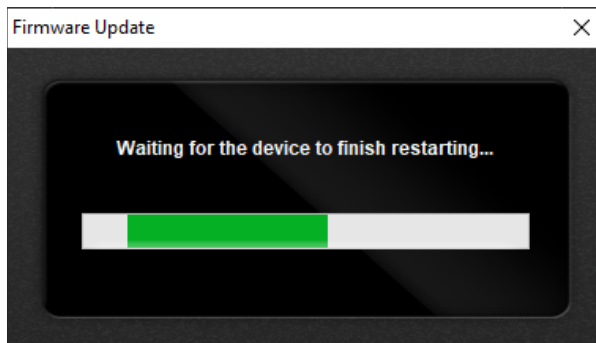
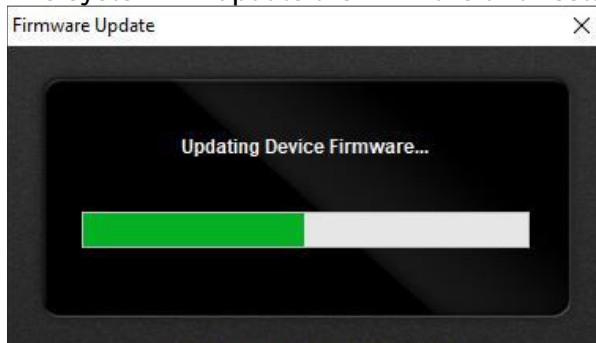
6. Click the *Update* Icon

7. Acknowledge the warning by clicking the *Proceed* button.

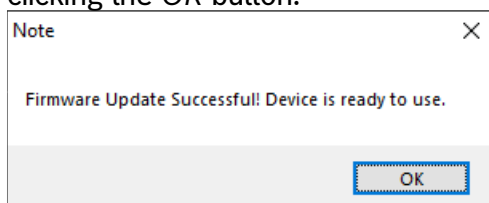
November 13, 2023  
Page 3 of 6



8. The system will update the firmware and restart the device.



9. Once the device has restarted, please acknowledge the update by clicking the *OK* button.



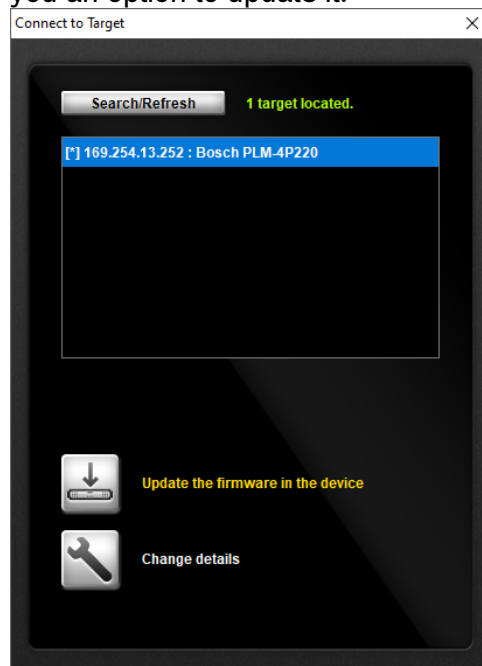
## Firmware Update for PLM-4Px2x (v1.1.13)

November 13, 2023  
Page 4 of 6

10. You must have the latest version of the PC Control Software installed (v1.2.28.0). If you don't, please refer to the section above.
11. Confirm that the PC Ethernet interface is set to "Obtain an IP address automatically".
12. Connect the PC to the PLM-4Px2x using the patch cable.
13. Launch the PLM-4Px2x Amplifier application.

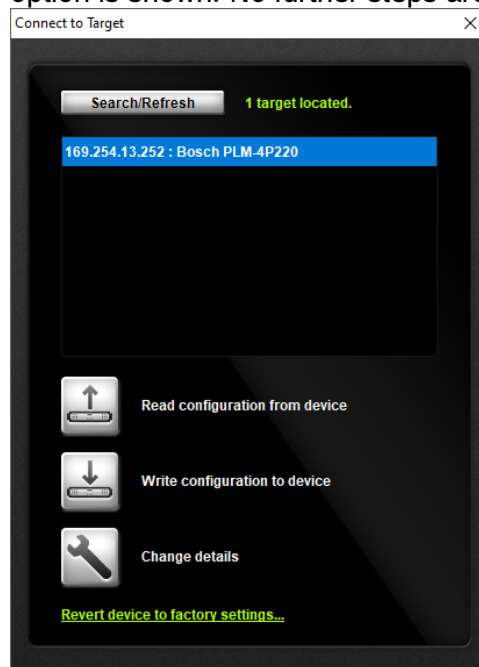


14. Go to the *Device* menu and click *Connect*.
  - a. If the firmware is outdated, the software will automatically show you an option to update it.



- b. If the firmware is up to date, no update is needed and no update option is shown. No further steps are required.

November 13, 2023  
Page 5 of 6

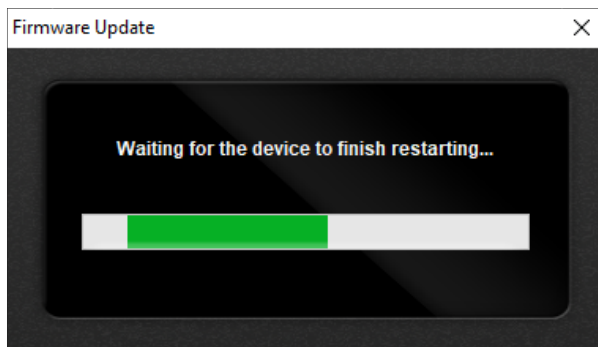
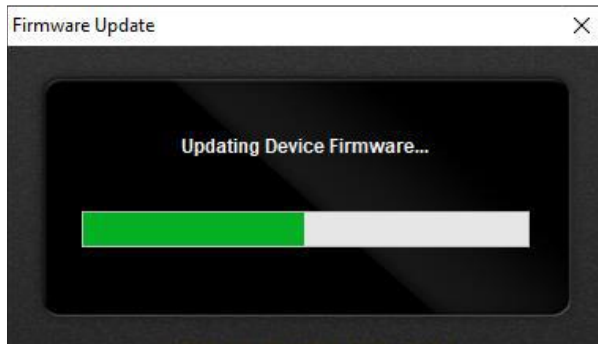


15. Click the *Update* Icon

16. Acknowledge the warning by clicking the *Proceed* button.



17. The system will update the firmware and restart the device.



18. Once the device has restarted, please acknowledge the update by clicking the *OK* button.

