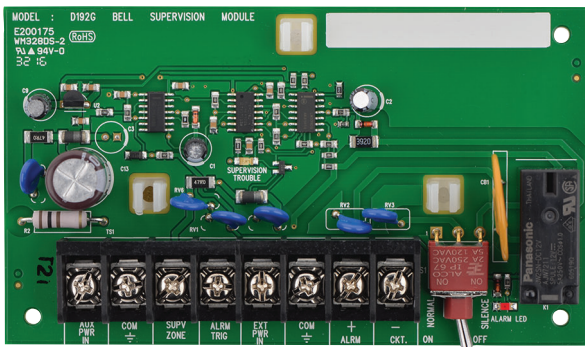


D192G Notification appliance module

www.boschsecurity.com



BOSCH
Invented for life



- ▶ Supervises 12 VDC or 24 VDC notification appliance circuits (NACs)
- ▶ Supervised signal silencing switch
- ▶ Notification appliance circuit rated at 3.0 A
- ▶ Multiple module configurations
- ▶ Mounts in panel enclosure

This module is used for wiring connections to remote signaling devices. You can connect up to twelve D192G modules to the same system on compatible control panels. Wiring is supervised for open, short, or grounded circuit faults.

The module powers notification appliances from the control panel power supply or from an Underwriters Laboratories, Inc. (UL 1481) Listed auxiliary 12 VDC or 24 VDC regulated/power-limited power supply for fire protective signaling units and commercial/residential burglar units. This feature allows the system to support more signaling devices on longer wire runs. It also allows the use of 12 V or 24 V notification appliances requiring the appropriate power supply.

Functions

Supervises 12 VDC or 24 VDC NACs

The D192G powers the notification devices from either the control panel's power supply or from a UL Listed Auxiliary 12 VDC or 24 VDC regulated power-limited power supply for use with Fire Protective Signaling Units and Commercial and Residential Burglar Units. The choice of power supply allows the use of 12 V or 24 V notification devices.

Supervised Signal Silencing Switch

The D192G module has a toggle switch for silencing the notification devices while testing the alarm panel. When this toggle switch is in the Silence (Off) position, the module indicates a supervisory trouble condition to the control panel.

Multiple Module Configurations

Several modules can be connected to the same zone or point on the control panel. If individual annunciation of a notification appliance circuit is desired, D192G modules can be connected to separate zones or points on-board or through the D8128D OctoPOPIT Eight-point Expander.

Mounts in Panel Enclosure

The D192G mounts inside the control panel enclosure using existing mounting holes or with a D137 or D138 Mounting Bracket. Refer to the control panel's installation guide for more information on mounting.

Certifications and approvals

Region	Regulatory compliance/quality marks	
USA	UL	AMCX: Central Station Alarm Units (UL1610, UL1635), APAW: Police Station Alarm Units (UL365, UL464), APOU: Proprietary Alarm Units (UL1076), NBSX: Household Burglar Alarm System Units (IL1023), UOJZ: Control Units, System (UL864, 9th edition)
	UL	UL 864 - Standard for Control Units and Accessories for Fire Alarm Systems (10th edition)
	UL	UL 985 - Household Fire Warning System Units (6th edition)
	CSFM	California State Fire Marshal
	FDNY-CoA	6286 D7412GV4 D9412GV4 NYC COA 6286 2018-2021
	NYC-MEA	12-92-E, Vol. 12 12-92-E, Vol. 12
	NYC-MEA	12-92-E, Vol. XV

Installation/configuration notes

Compatibility Information

Category	Product I
Control Panels	G-series ¹
	B-series ²
	D9412 ³ , D7412 ³ , D7212 ^{3*}
	D9124 ³
Detectors	For a list of compatible two wire detectors, refer to the <i>Approved Applications Compliance Guide</i> for the control panel being used.
Modules	D8128D OctoPOPIT Eight-point Expander
Mounting Brackets	D137 Mounting Bracket
	D138 Mounting Bracket, Right Angle

¹ G-series = D9412GV4, D7412GV4, D7212GV4*, D9412GV3, D7412GV3, D7212GV3*, D9412GV2, D7412GV2, D7212GV2*, D9412G³, D7412G³, D7212G^{3*}

² B series = B5512 and B4512

³ These products are legacy products and have been investigated for compatibility only to UL864 8th edition

* The D7212 models are not listed for commercial fire applications

Notification Appliances

Notification appliances used with the D192G Module must:

- Be polarized (DC) equipment
- Match the voltage rating of the alarm power supply

- Not exceed the current rating of the alarm power supply
- Not exceed 3.0 A in combined device current for each D192G Module

Wiring

Use a Class B, Style W, two-wire circuit and wire according to the instructions supplied with the module. No more than twelve D192G modules can be used per system. For UL applications, a listed (UTRZ) regulated power supply can be used to power notification devices through the D192G module.

To comply with NFPA Standards:

- The control panel and power supply must be supervised or installed in the same room not more than 20 ft (6 m) from the module
- Wiring between the control panel and the power supply must be in conduit
- Power supply fault conditions must be supervised by a UL Listed relay

Parts included

Quantity	Component
1	NAC module
1	Hardware pack
1	Literature pack

Technical specifications

Electrical

External Power In

Current:	3.0 A maximum
Voltage:	12 VDC or 24 VDC nominal

Aux Power In

Current:	100 mA maximum
Voltage:	12 VDC nominal

Supervisory Zone Control

Current:	5 mA maximum
----------	--------------

Mechanical

Dimensions:	5 in. x 3 in. x 0.75 in. (13 cm x 8 cm x 2 cm)
-------------	--

Ordering information

D192G Notification appliance module

The D192G Notification Appliance Circuit (NAC) module is used for wiring connections to remote signaling devices. The wiring is supervised for open, short, or grounded circuit faults. Either 12 VDC or 24 VDC notification devices can be used depending on the choice of power supply.

Order number **D192G**

Represented by:

Europe, Middle East, Africa:
Bosch Security Systems B.V.
P.O. Box 80002
5600 JB Eindhoven, The Netherlands
Phone: + 31 40 2577 284
emea.securitysystems@bosch.com
emea.boschsecurity.com

Germany:
Bosch Sicherheitssysteme GmbH
Robert-Bosch-Ring 5
85630 Grasbrunn
Germany
www.boschsecurity.com

North America:
Bosch Security Systems, Inc.
130 Perinton Parkway
Fairport, New York, 14450, USA
Phone: +1 800 289 0096
Fax: +1 585 223 9180
onlinehelp@us.bosch.com
www.boschsecurity.us

Asia-Pacific:
Robert Bosch (SEA) Pte Ltd, Security Systems
11 Bishan Street 21
Singapore 573943
Phone: +65 6571 2808
Fax: +65 6571 2699
apr.securitysystems@bosch.com
www.boschsecurity.asia